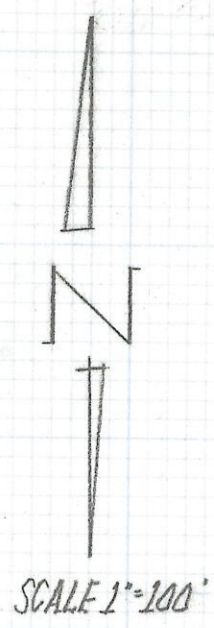
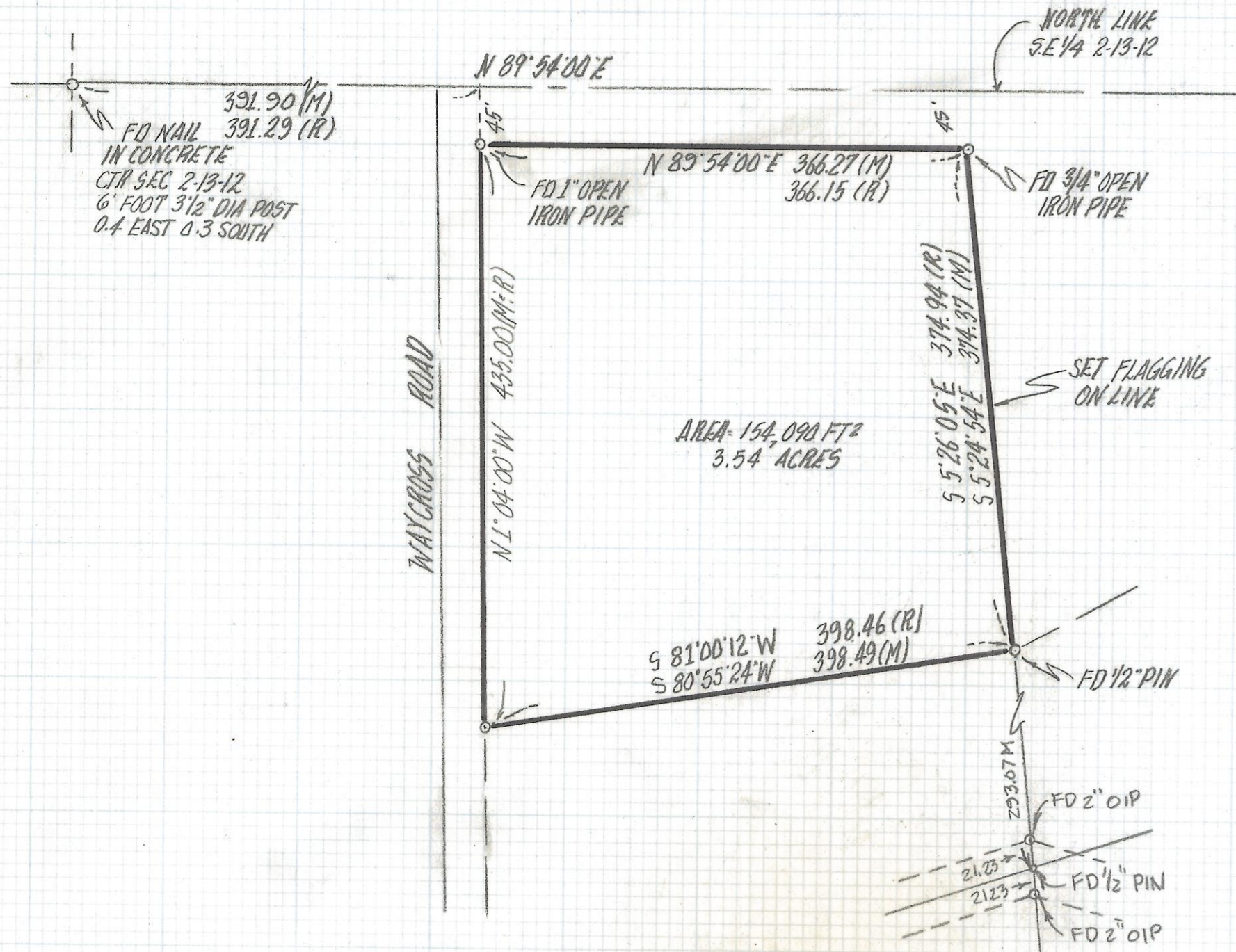


# **DISCLAIMER:**

**This unrecorded Record of Survey was donated to the City of Tucson. The City of Tucson provides this data for your personal use "as is." Additionally, the City of Tucson provides this information with the understanding that it is not guaranteed to be accurate, correct or complete and conclusions drawn from such information are the responsibility of the user.**



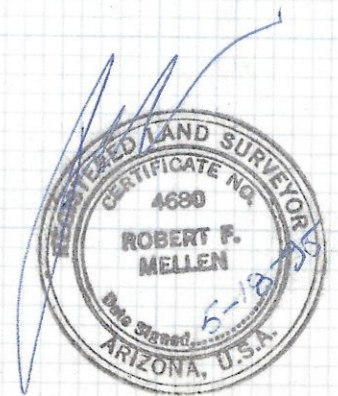


NOTES

- 1) \* INDICATES SET 1/2" PIN MKD L.S. 4680 UNLESS NOTED
- 2) M- MEASURED
- 3) R- MAP OR DEED RECORD
- 4) \* BASIS OF BEARINGS N 89° 54' 00" E NORTH LINE OF THE SE 1/4 PER DOCKET 932A PAGE 1555
- 5) SEE JOB # 78-144 AND 83-107

RESULTS OF SURVEY

OF A PORTION OF THE NORTHWEST QUARTER OF THE SOUTHEAST QUARTER OF SECTION 2 TOWNSHIP 13 SOUTH RANGE 12 EAST GILA & SALT RIVER BASE AND MERIDIAN PIMA COUNTY ARIZONA



ROBERT F. MELLEN  
REGISTERED LAND SURVEYOR  
TUCSON, ARIZONA  
JOB # 95-58

REVISED 12-14-95 SEE 95-160

Z-2017-039