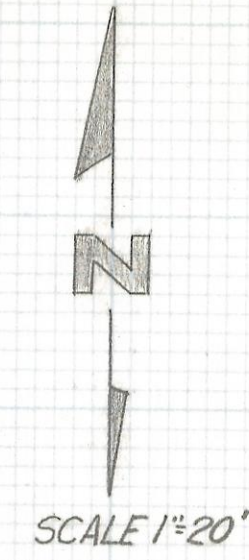
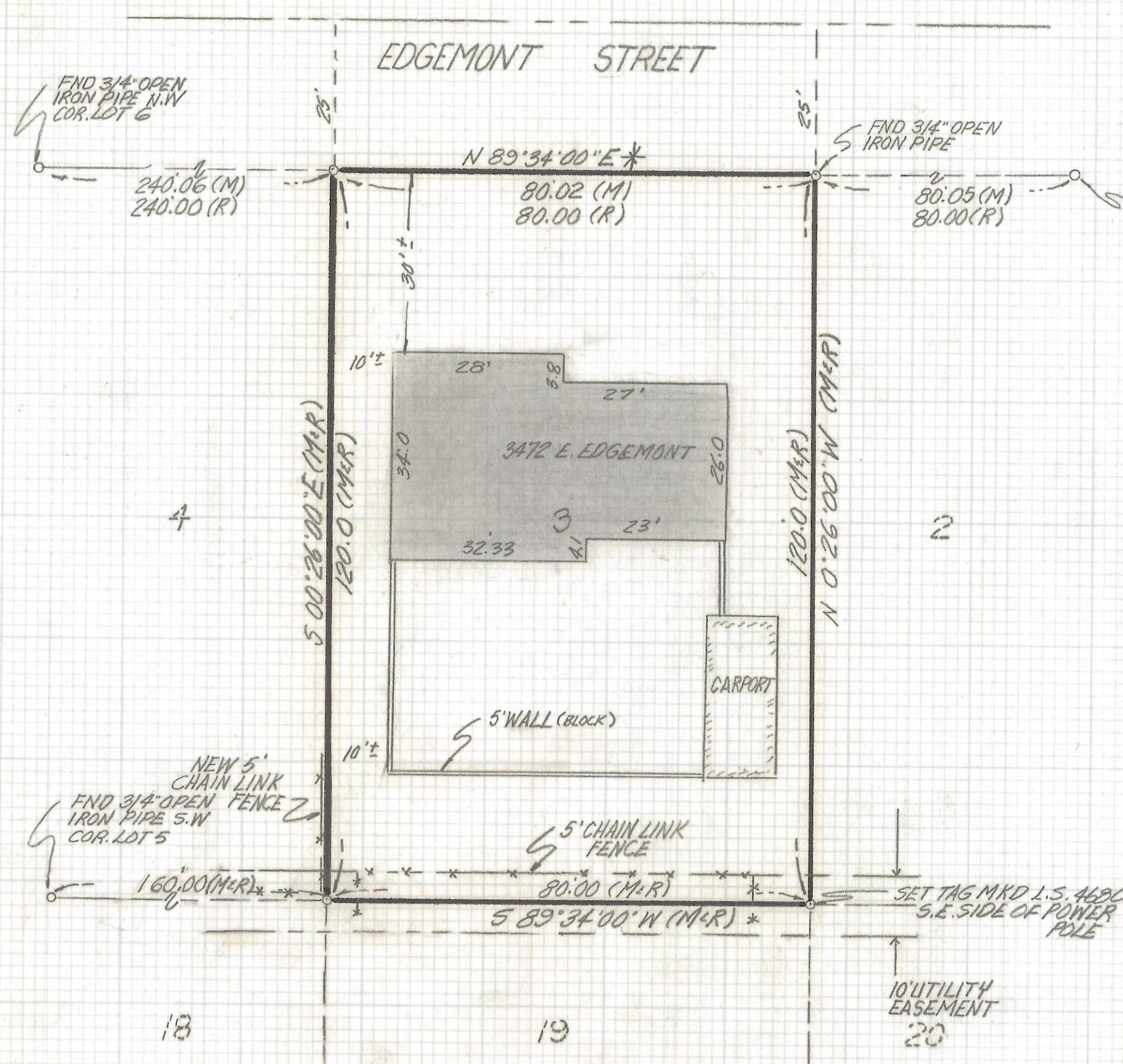


DISCLAIMER:

This unrecorded Record of Survey was donated to the City of Tucson. The City of Tucson provides this data for your personal use "as is." Additionally, the City of Tucson provides this information with the understanding that it is not guaranteed to be accurate, correct or complete and conclusions drawn from such information are the responsibility of the user.



NOTES

- (1) INDICATES SET 1/2" PIN MKD I.S. 4680 UNLESS NOTED
- (2) M- MEASURED
- (3) R- MAP OR DEED RECORD
- (4) * BASIS OF BEARINGS N 89°34'00"E NORTH LINE LOT 3 BLOCK 13 ENCANTO PARK PER BOOK 8 PAGE 27 M&P

RESULTS OF SURVEY

OF LOT 3 BLOCK 13 ENCANTO PARK RECORDED IN BOOK 8 OF MAPS AND PLATS AT PAGE 27 IN THE OFFICE OF THE PIMA COUNTY RECORDER PIMA COUNTY, ARIZONA



ROBERT F. MELLEN
 REGISTERED LAND SURVEYOR
 TUCSON, ARIZONA
 JOB# 92-50
 2-2017-332