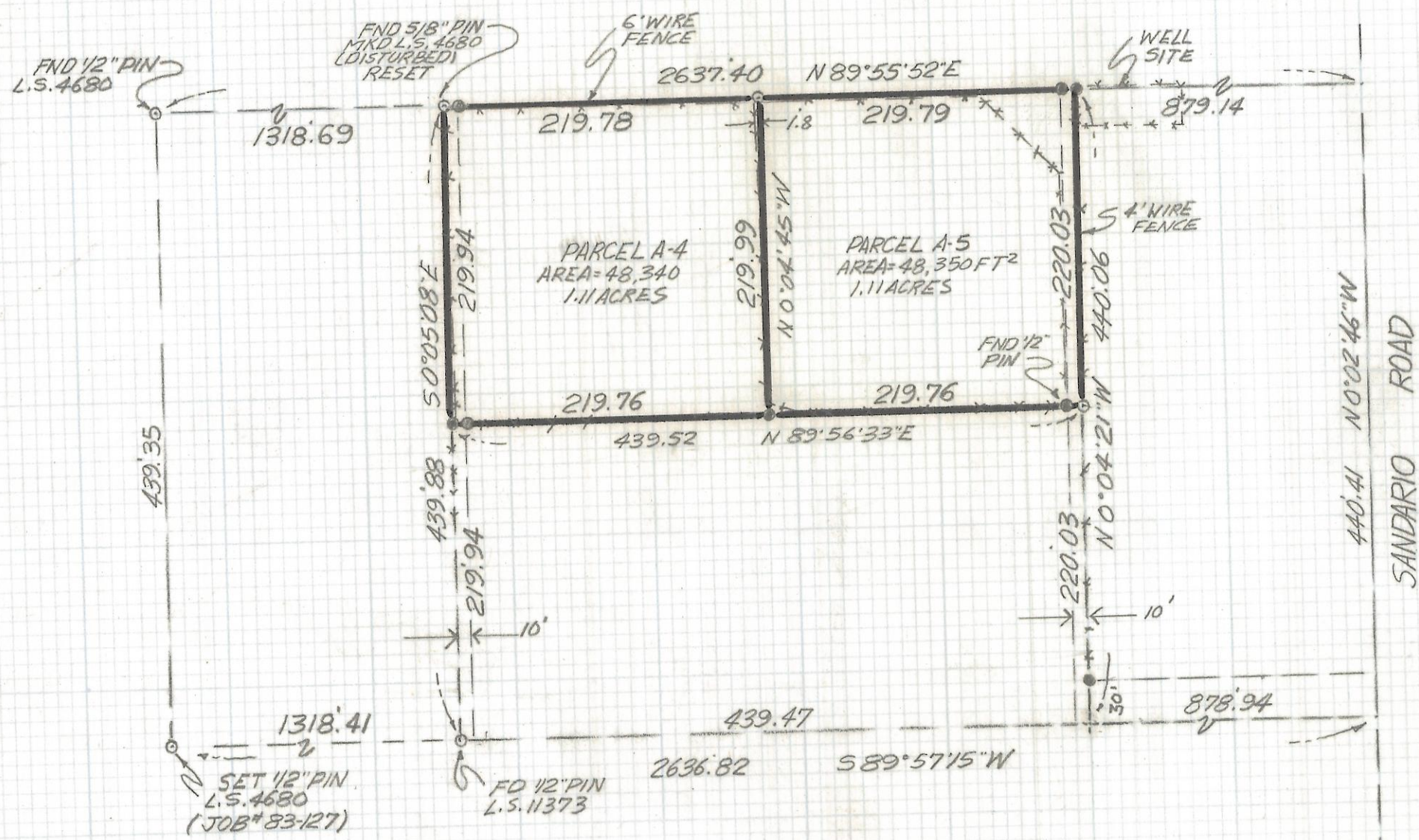


# **DISCLAIMER:**

**This unrecorded Record of Survey was donated to the City of Tucson. The City of Tucson provides this data for your personal use "as is." Additionally, the City of Tucson provides this information with the understanding that it is not guaranteed to be accurate, correct or complete and conclusions drawn from such information are the responsibility of the user.**



**NOTES**

- (1) -  $\circ$  INDICATES SET 1/2" PIN MKD L.S. 4680 UNLESS NOTED
- (2) - SEE JOB# 75-89 AND 83-127
- (3) -  $\bullet$  INDICATES FOUND 1/2" PIN L.S. 4680 UNLESS NOTED

**RESULTS OF SURVEY**

OF A PORTION OF THE SOUTHEAST QUARTER OF THE NORTHEAST QUARTER SECTION 33 TOWNSHIP 12 SOUTH OF RANGE 11 EAST GILA AND SALT RIVER BASE AND MERIDIAN, PIMA COUNTY ARIZONA



Z-2017-442

<b>RFM</b>	ROBERT F. MELLEN		REVISIONS		DATE
	REGISTERED LAND SURVEYOR		DATE: 4-4-91		DR BY: EMT CK BY: RFM
	1250 W. MOHAVE ST. TUCSON, ARIZONA.		JOB NO. 91-43		SHEET 1 OF 1
(602) 888-1012		SCALE: 1" = 100'			