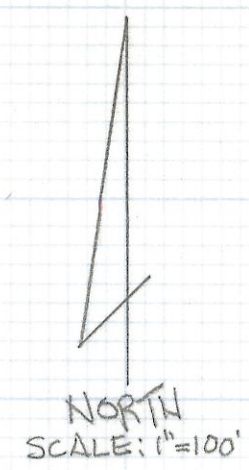
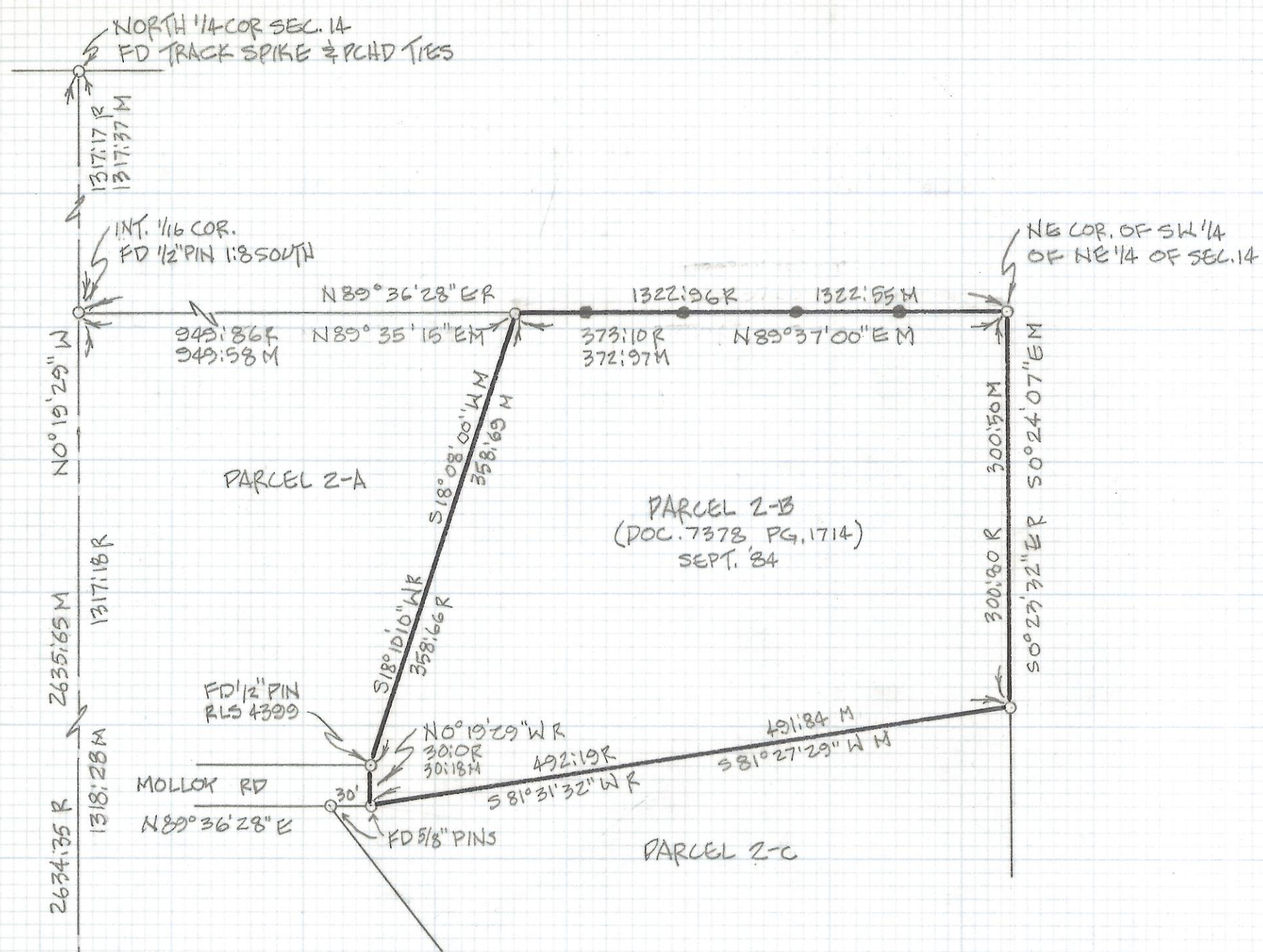


# **DISCLAIMER:**

**This unrecorded Record of Survey was donated to the City of Tucson. The City of Tucson provides this data for your personal use "as is." Additionally, the City of Tucson provides this information with the understanding that it is not guaranteed to be accurate, correct or complete and conclusions drawn from such information are the responsibility of the user.**





RESULTS OF SURVEY  
 OF A PORTION OF THE SOUTHWEST QUARTER  
 OF THE NORTHEAST QUARTER OF SECTION 14,  
 TOWNSHIP 13 SOUTH, OF RANGE 12 EAST, GILA  
 AND SALT RIVER BASE AND MERIDIAN, PIMA  
 COUNTY, ARIZONA.

- NOTES:
- (1) ♀ INDICATES FOUND 1/2" STEEL PIN MKD LS 4680 UNLESS NOTED
  - (2) ♂ INDICATES 40# NAIL SET ON PROPERTY LINE
  - (3) R - MAP OR DEED RECORD
  - (4) M - MEASURED
  - (5) SEE JOB 75-119, 74-41



ROBERT F. MELLEN  
 REGISTERED LAND SURVEYOR  
 TUCSON, ARIZONA  
 JOB 89-48

Z-2018-101