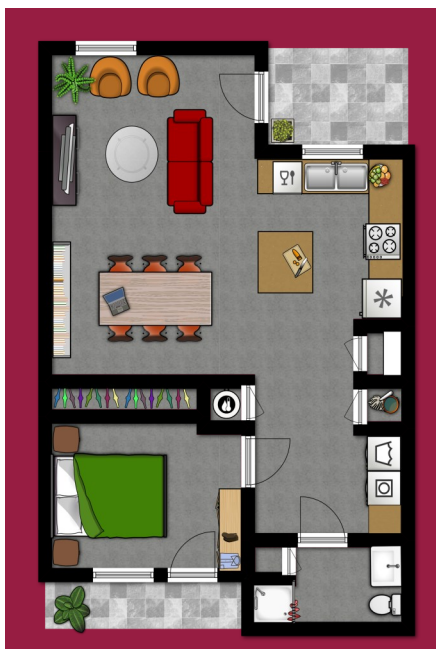


AFFORDABLE COMMUNITY FOR VETERANS & SENIORS

ALL UTILITES INCLUDED

- WASHER/DRYER IN HOME
- PETS WELCOME
- COMMUNITY ROOM



CALL OR VISIT US TODAY!

(520) 289-9270

3700 S Calle Polar, Tucson, AZ 85730



- ON-SITE SUPPORTIVE SERVICES
- PROFESSIONAL, FRIENDLY STAFF

BRAND NEW SPACIOUS 1 BEDROOMS

PROFESSIONALLY MANAGED BY:
Dunlap & Magee
PROPERTY MANAGEMENT

GORMAN
& COMPANY, INC.
A Gorman Neighborhood Property

WWW.ESPERANZAENESCALANTE.COM

AFFORDABLE HOUSING OPPORTUNITY, INCOME RESTRICTIONS APPLY, CONTACT LEASING OFFICE FOR MORE DETAILS
Dunlap & Magee does not discriminate on the basis of disability status in the admission of or access to, or treatment of or employment in its federally assisted programs and activities.

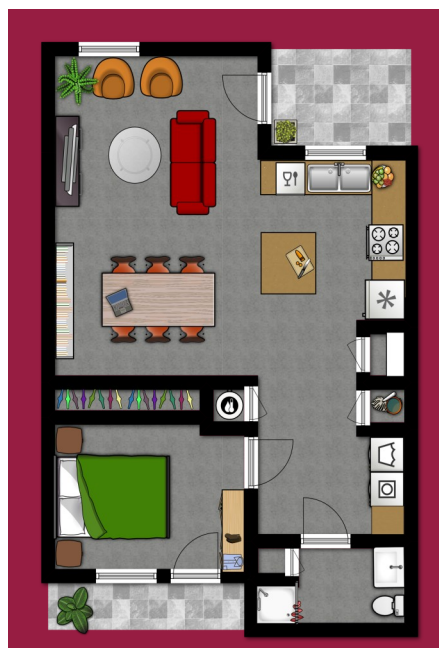




COMUNIDAD ACCESIBLE PARA VETERANOS Y PERSONAS MAYORES

TODAS LAS UTILIDADES INCLUIDAS

- INCLUYE LAVADORA/SECADORA
- MASCOTAS SON BIENVENIDAS
- SALON COMUNITARIO



LLAME O VISITENOS HOY!

(520) 289-9270

3700 S Calle Polar, Tucson, AZ 85730



- BRINDAMOS SERVICIOS DE APOYO
- PERSONAL PROFESIONAL Y AMABLE

APARTAMENTOS DE 1 RECAMARA NUEVOS Y ESPACIOSOS

PROFESSIONALLY MANAGED BY:
Dunlap & Magee
PROPERTY MANAGEMENT

GORMAN
& COMPANY, INC.
A Gorman Neighborhood Property

WWW.ESPERANZAENESCALANTE.COM

OPORTUNIDAD DE VIVIENDA ECONOMICA, RESTRICCIONES DE INGRESO SE APLICA, CONTACTA A LA OFICINA DE RENTA PARA MAS DETALLES
Dunlap & Magee no discrimina sobre la base de estado de la inhabilidad en la admisión o acceso a, o tratamiento de o empleo en sus programas de Asistencia federal y actividades.

