

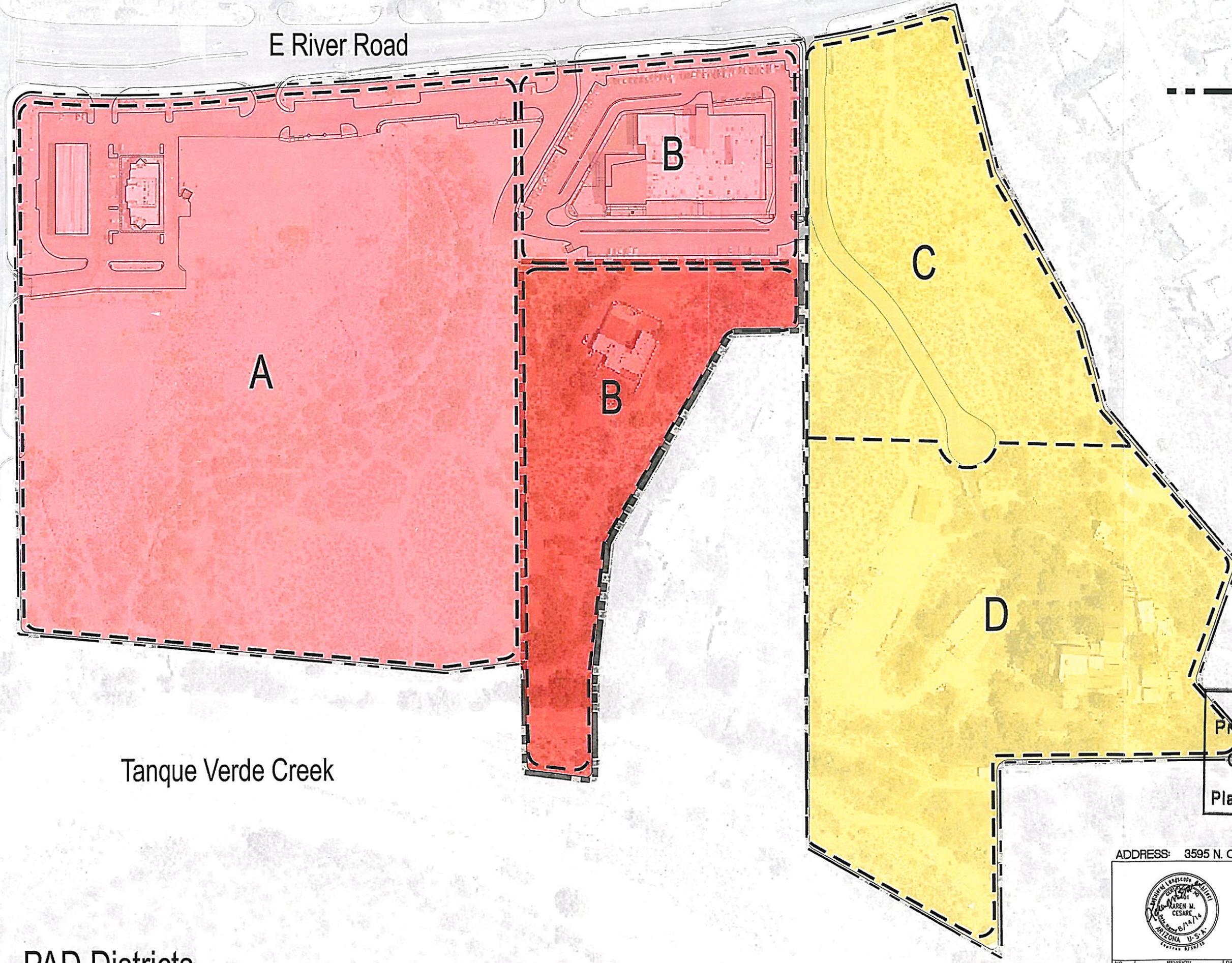
NOTICE OF DRAWING AUTHORIZATION: THIS DRAWING IS A COPYRIGHT PROTECTED DOCUMENT PRODUCED BY COMPUTER AIDED DESIGN AND DRAFTING TECHNIQUES. MULTIPLE AND/OR UNAUTHORIZED COPIES OF DRAWING DATA FILES MAY EXIST. ANY USE, REUSE, OR MODIFICATION OF THE DRAWING OR ITS DATA FILES WITHOUT THE APPROPRIATE AUTHORIZED SIGNED REGISTERED LANDSCAPE ARCHITECT'S AND WRITTEN VERIFICATION BY NOVAK ENVIRONMENTAL IS PROHIBITED AND WILL BE AT THE USER'S RISK AND FULL LEGAL RESPONSIBILITY.

Craycroft Road




E River Road

Tanque Verde Creek

PAD Districts



LEGEND

-  RVV PAD Addendum 1
-  Rio Verde Market District
 - A- Sub-area A - 19.32 AC
 - B- Sub-area B - 8.51 AC
-  Rio Verde Manor District
 - C- Sub-area C - 6.65 AC
 - D- Sub-area D - 10.44 AC

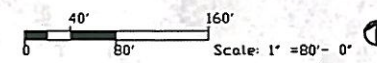
Rezoning
Preliminary Development Plan
 09-14-14 Date 12/12/14
Planning & Development Services

ADDRESS: 3595 N. CALLE ROSARIO



NE Novak Environmental, Inc.
 4574 North First Avenue #100 • Tucson, AZ 85718
 Phone 520.206.0591 Fax 520.882.3006
 Landscape Architecture • Natural Resources • Planning • Mitigation

PRELIMINARY DEVELOPMENT PLAN
RIO VERDE VILLAGE PAD ADDENDUM



NO.	REVISION	DATE

DESIGNED:	DRAWN:	CHECKED:	SHEET
	CJL	K.M.C.	
DATE:	PROJECT NO.:	SCALE:	OF

SW 1/4 OF SEC. 25, T 13 S, R 14 E, C&SRM, PIMA COUNTY, ARIZONA