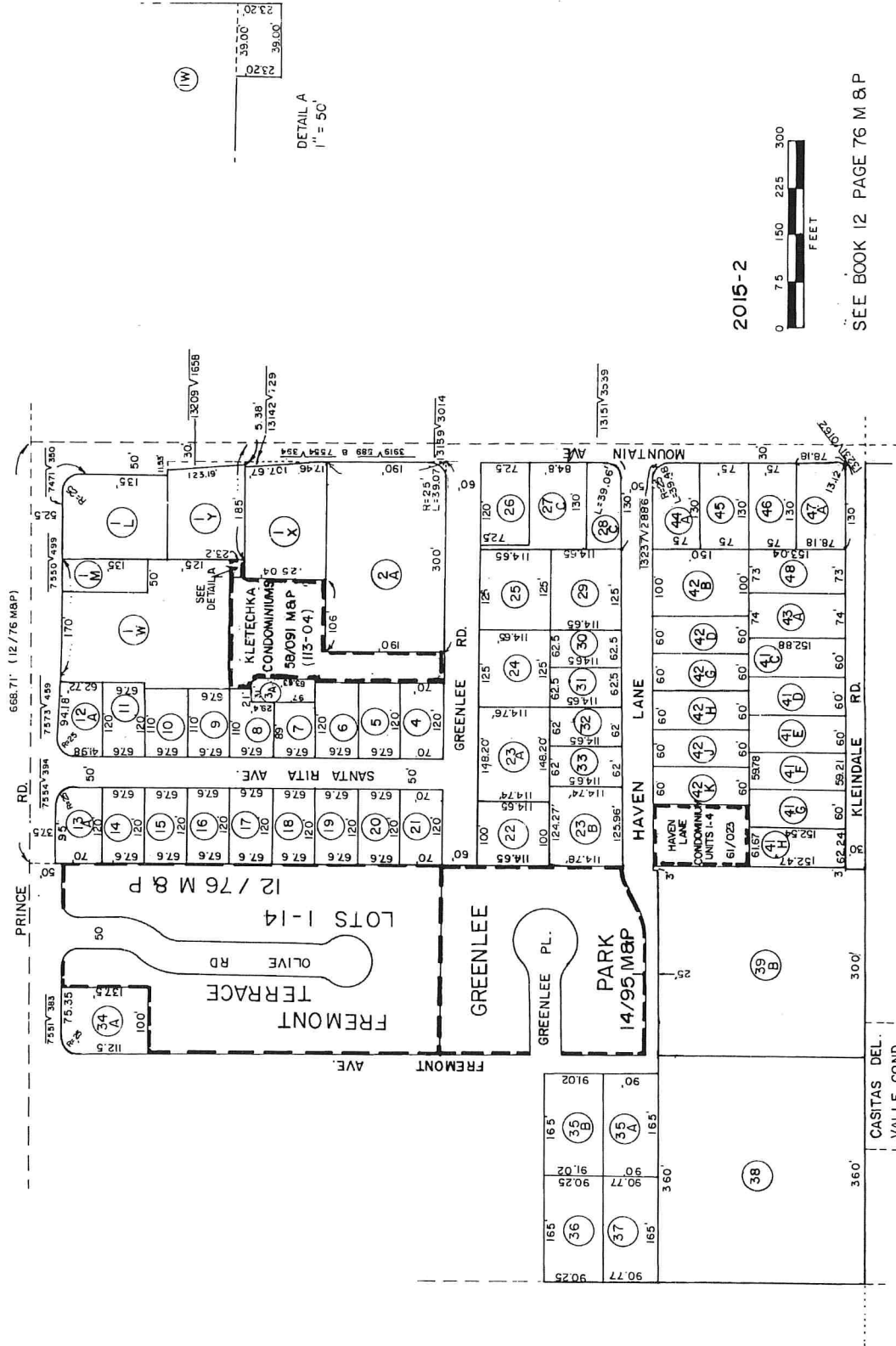


PIMA COUNTY ASSESSOR'S LOT AND BLOCK MAP

ASSESSOR'S RECORD MAP

113-04 SECTION 30, TOWNSHIP 13 SOUTH, RANGE 14 EAST DETAIL 8 N.E. 1/4, S.W. 1/4



2015-2

SEE BOOK 12 PAGE 76 M & P

SCANNED

M13143013

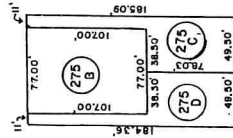
ASSESSOR'S RECORD MAP

SECTION 30, TOWNSHIP 13 SOUTH, RANGE 14 EAST

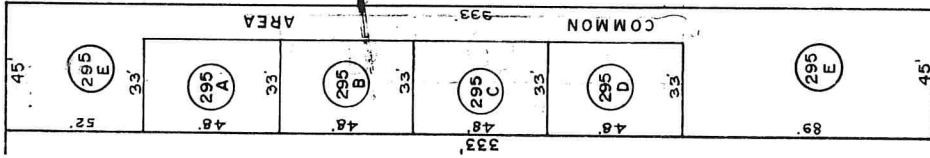
DETAIL No. 11

113-04

10/10

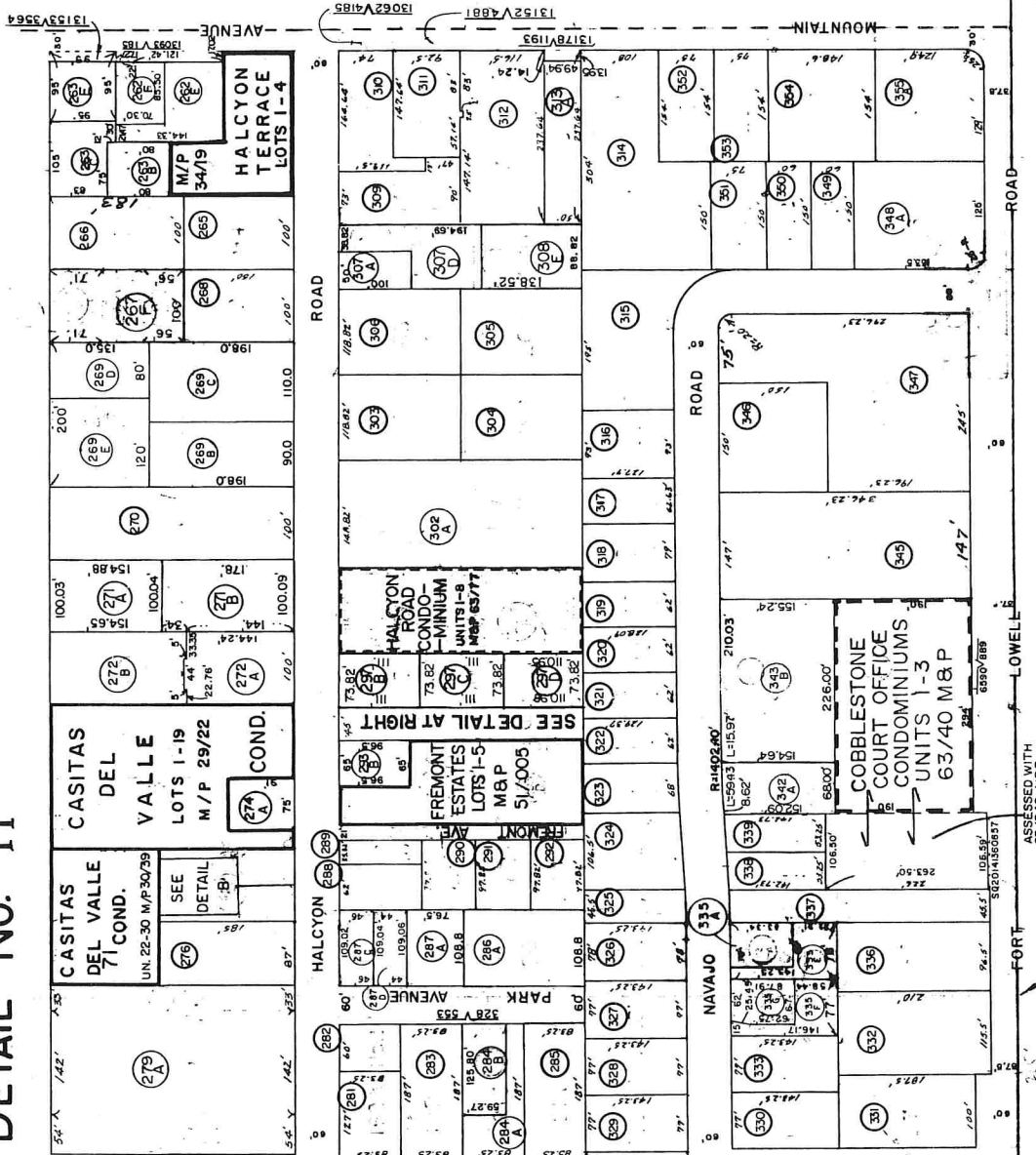


DETAIL B
1" = 100'



DETAIL OF CODE 295

SCALE: 1" = 40'



ASSIGNED WITH
63/7040 M&P
113-04-447A

SW COR.
SE4, SW 4

SEE BOOK 4, PAGE 31, R.S.
SEE BOOK 3, PAGE 70, R.S.
SEE BOOK 7, PAGE 5, R.S.
SEE BOOK 11, PAGE 9, R.S.

2016-1

SCANNED

380-72