

United States Department of the Interior
National Park Service

National Register of Historic Places Continuation Sheet

Menlo Park Historic District
Name of Property

Pima, Arizona
County and State

Section number 7

Page 8

N/A
Name of multiple property listing

INVENTORY LIST - CONTRIBUTORS

#	dir	street	tax parcel	date	C/NC	style
701	W	Alameda Street	116-19-1430	1916	Contributor	Vernacular
705	W	Alameda Street	116-19-1420	1935	Contributor	Spanish Colonial Revival
830	W	Alameda Street	116-19-1790	1923	Contributor	Spanish Colonial Revival
831	W	Alameda Street	116-19-1140	1954	Contributor	Ranch
834	W	Alameda Street	116-19-1920	1951	Contributor	Transitional Ranch
838	W	Alameda Street	116-19-1900	1957	Contributor	Modern
839	W	Alameda Street	116-18-3110	1955	Contributor	Modern
842	W	Alameda Street	116-19-1890	1956	Contributor	Ranch
846	W	Alameda Street	116-19-187A	1951	Contributor	Transitional Ranch
847	W	Alameda Street	116-18-3120	1956	Contributor	Ranch
853	W	Alameda Street	116-18-3130	1956	Contributor	Ranch
859	W	Alameda Street	116-18-3140	1956	Contributor	Ranch
860	W	Alameda Street	116-18-190B	1926	Contributor	Spanish Colonial Revival
865	W	Alameda Street	116-18-3150	1955	Contributor	Modern
916	W	Alameda Street	116-18-1760	1963	contributor	Ranch
921	W	Alameda Street	116-18-2010	1916	Contributor	Bungalow
922	W	Alameda Street	116-18-1770	1917	Contributor	Bungalow
926	W	Alameda Street	116-18-1780	1946	Contributor	Modern
927	W	Alameda Street	116-18-2020	1950	Contributor	Transitional Ranch
935	W	Alameda Street	116-18-2030	1956	Contributor	Ranch
939	W	Alameda Street	116-18-2050	1955	Contributor	Ranch
940	W	Alameda Street	116-18-1800	1929	Contributor	Spanish Colonial Revival
1004	W	Alameda Street	116-18-157A	1921	1992 MPDF	Spanish Colonial Revival
1009	W	Alameda Street	116-18-2290	1954	Contributor	Ranch
1015	W	Alameda Street	116-18-2300	1916	Contributor	Bungalow
1016	W	Alameda Street	116-18-1590	1917	Contributor	Bungalow
1021	W	Alameda Street	116-18-2310	1917	Contributor	Bungalow
1024	W	Alameda Street	116-18-1600	1957	Contributor	Ranch
1028	W	Alameda Street	116-18-1610	1925	Contributor	Vernacular
1034	W	Alameda Street	116-18-1620	1952	Contributor	Ranch
1101	W	Alameda Street	116-18-2570	1947	Contributor	Ranch
1104	W	Alameda Street	116-18-1430	1915	Contributor	Bungalow
1116	W	Alameda Street	116-18-1440	1915	Contributor	Bungalow
1121	W	Alameda Street	116-18-2600	1920	Contributor	Bungalow
1122	W	Alameda Street	116-18-1450	1940	Contributor	Spanish Colonial Revival
1132	W	Alameda Street	116-18-1470	1930	Contributor	Pueblo Revival
1133	W	Alameda Street	116-18-261A	1921	Contributor	Spanish Colonial Revival

United States Department of the Interior
National Park Service

National Register of Historic Places Continuation Sheet

Menlo Park Historic District
Name of Property

Pima, Arizona
County and State

Section number 7

Page 9

N/A
Name of multiple property listing

1202-1204	W	Alameda Street	116-18-1280	1963	Contributor	Modern
1210	W	Alameda Street	116-18-1290	1942	Contributor	Vernacular
1216	W	Alameda Street	116-18-1300	1918	Contributor	Bungalow
1232	W	Alameda Street	116-18-1330	1925	Contributor	Spanish Colonial Revival
1233	W	Alameda Street	116-18-2900	1927	Contributor	Spanish Colonial Revival
1315	W	Alameda Street	116-21-1760	1964	Contributor	Modern
1322	W	Alameda Street	116-21-1660	1952	Contributor	Ranch
1328	W	Alameda Street	116-21-1640	1954	Contributor	Ranch
1340	W	Alameda Street	116-21-1630	1950	Contributor	Modern
3	N	Bonita Avenue	116-19-1520	1916	Contributor	Bungalow
7	N	Bonita Avenue	116-19-1510	1916	Contributor	Bungalow
9	N	Bonita Avenue	116-19-1500	1917	Contributor	Bungalow
11	N	Bonita Avenue	116-19-1490	1917	Contributor	Bungalow
15	N	Bonita Avenue	116-19-1480	1936	Contributor	Spanish Colonial Revival
21	N	Bonita Avenue	116-19-1450	1916	Contributor	Bungalow
23	N	Bonita Avenue	116-19-1440	1916	Contributor	Vernacular
1133	W	Cedar Street	116-21-0760	1950	Contributor	Ranch
951	W	Clearwater Drive	116-21-2820	1916	Contributor	Spanish Colonial Revival
650	W	Congress Street	116-19-194F	1945	Contributor	n/a
709	W	Congress Street	116-19-1300	1915	Contributor	Bungalow
715	W	Congress Street	116-19-1290	1922	Contributor	Spanish Colonial Revival
843-849	W	Congress Street	116-18-1940	1935	Contributor	Service station
901	W	Congress Street	116-18-2210	1949	Contributor	Modern
905	W	Congress Street	116-18-2220	1924	Contributor	Bungalow
914	W	Congress Street	116-21-0010	1930	Contributor	Commercial
931-937	W	Congress Street	116-18-2260	1926, 1949	Contributor	Spanish Colonial Revival, Modern
941-945	W	Congress Street	116-18-2270	1925, 1945	Contributor	Commercial
1000	W	Congress Street	116-21-0220	1925	Contributor	Spanish Colonial Revival
1002	W	Congress Street	116-18-250B	1964	Contributor	Commercial
1016	W	Congress Street	116-21-0240	1925	Contributor	Spanish Colonial Revival
1030	W	Congress Street	116-21-0260	1935	Contributor	Vernacular
1038	W	Congress Street	116-21-0270	1954	Contributor	Ranch
1039	W	Congress Street	116-18-254B	1955	Contributor	Ranch
1115	W	Congress Street	116-18-2790	1952	Contributor	Ranch
1121	W	Congress Street	116-18-2800	1920	Contributor	Bungalow
1127	W	Congress Street	116-18-2810	1952	Contributor	Ranch
1130A, B	W	Congress Street	116-21-0480	1945	Contributor	Transitional Ranch
1136	W	Congress Street	116-21-0490	1947	Contributor	Vernacular

United States Department of the Interior
National Park Service

National Register of Historic Places Continuation Sheet

Menlo Park Historic District
Name of Property

Pima, Arizona
County and State

Section number 7

Page 10

N/A
Name of multiple property listing

1202	W	Congress Street	116-21-0660	1950	Contributor	Transitional Ranch
1210	W	Congress Street	116-21-0670	1947	Contributor	Transitional Ranch
1215	W	Congress Street	116-18-3080	1940	Contributor	Vernacular
1217	W	Congress Street	116-18-3070	1931	Contributor	Vernacular
1227	W	Congress Street	116-18-3060	1957	Contributor	Ranch
1228	W	Congress Street	116-21-1030	1964	Contributor	Modern
1236	W	Congress Street	116-21-1040	1950	Contributor	Transitional Ranch
1305	W	Congress Street	116-21-1150	1922	Contributor	Spanish Colonial Revival
1315	W	Congress Street	116-21-200B	1930	Contributor	Vernacular
1335	W	Congress Street	116-21-1180	1955	Contributor	Ranch
1350	W	Congress Street	116-21-1980	1964	Contributor	Modern
1372	W	Congress Street	116-21-1960	1961	Contributor	Ranch
1408	W	Congress Street	116-21-3110	1912	Contributor	Vernacular
n/a	n/a	Corner of Fresno & Grande	116-18-3810	no data	Contributor	n/a
210	N	Cuesta Avenue	116-18-0890	1952	Contributor	Vernacular
228	N	Cuesta Avenue	116-18-0810	1950	Contributor	Transitional Ranch
15-17	S	Cuesta Avenue	116-21-1200	1951	Contributor	Ranch
59	S	Cuesta Avenue	116-21-133A	1950	Contributor	Ranch
60	S	Cuesta Avenue	116-21-1400	1950	Contributor	Ranch
103	S	Cuesta Avenue	116-21-1210	1960	Contributor	Modern
125	S	Cuesta Avenue	116-21-1280	1957	Contributor	Modern
133	S	Cuesta Avenue	116-21-1290	1958	Contributor	Ranch
149	S	Cuesta Avenue	116-21-1360	1925	Contributor	Spanish Colonial Revival
47	N	Davila Circle	116-19-1180	1961	Contributor	Ranch
52	N	Davila Circle	116-19-1190	1961	Contributor	Modern
57	N	Davila Circle	116-19-1160	1958	Contributor	Ranch
62	N	Davila Circle	116-19-1200	1955	Contributor	Ranch
65	N	Davila Circle	116-19-1150	1953	Contributor	Ranch
68	N	Davila Circle	116-19-1210	1954	Contributor	Ranch
74	N	Davila Circle	116-19-1220	1960	Contributor	Ranch
80	N	Davila Circle	116-19-123A	1950	Contributor	Ranch
911	W	Emery Street	116-18-4030	1956	Contributor	Modern
921	W	Emery Street	116-18-4020	1963	Contributor	Modern
931	W	Emery Street	116-18-4010	1956	Contributor	Modern
941	W	Emery Street		1956	Contributor	Modern
951	W	Emery Street	116-18-3990	1956	Contributor	Modern
1318	W	Emery Street	116-18-360A	1945	Contributor	Vernacular
1334	W	Emery Street	116-18-361A	1945	Contributor	Spanish Colonial Revival

United States Department of the Interior
National Park Service

National Register of Historic Places Continuation Sheet

Menlo Park Historic District
Name of Property

Pima, Arizona
County and State

Section number 7

Page 11

N/A
Name of multiple property listing

1341-1343	W	Emery Street	116-18-365A	1944	Contributor	Spanish Colonial Revival
1203	W	Estrada Place	116-18-3900	1955	Contributor	Modern
1211	W	Estrada Place	116-18-3910	1961	Contributor	Modern
1212	W	Estrada Place	116-18-3880	1955	Contributor	Modern
1220	W	Estrada Place	116-18-3870	1955	Contributor	Modern
901	W	Estrada Street	116-18-4160	1956	Contributor	Modern
902	W	Estrada Street	116-18-4050	1952	Contributor	Modern
921	W	Estrada Street	116-18-4140	1956	Contributor	Modern
922	W	Estrada Street	116-18-4070	1956	Contributor	Modern
931	W	Estrada Street	116-18-4130	1956	Contributor	Modern
932	W	Estrada Street	116-18-4080	1956	Contributor	Modern
941	W	Estrada Street	116-18-4120	1956	Contributor	Modern
942	W	Estrada Street	116-18-4090	1956	Contributor	Modern
952	W	Estrada Street	116-18-4100	1951	Contributor	Modern
841	W	Franklin Street	116-18-185B	1930	Contributor	Spanish Colonial Revival
920	W	Franklin Street	116-18-0190	1958	Contributor	Ranch
930	W	Franklin Street	116-18-0160	1654	Contributor	Ranch
944	W	Franklin Street	116-18-0200	1957	Contributor	Ranch
1215-1217	W	Franklin Street	116-18-1220	1960	Contributor	Vernacular
1301	W	Franklin Street	116-18-1080	1933	Contributor	Vernacular
1303	W	Franklin Street	116-18-1050	1928	Contributor	Spanish Colonial Revival
1327	W	Franklin Street	116-18-113C	1950	Contributor	Vernacular
1346	W	Franklin Street	116-18-092A	1940	Contributor	Vernacular
1361	W	Franklin Street	116-18-117A	1935	Contributor	Bungalow
902	W	Fresno Street	116-18-4170	1956	Contributor	Modern
912	W	Fresno Street	116-18-4180	1962	Contributor	Modern
922	W	Fresno Street	116-18-4190	1956	Contributor	Modern
932	W	Fresno Street	116-18-4200	1956	Contributor	Modern
942	W	Fresno Street	116-18-4210	1956	Contributor	Ranch
952	W	Fresno Street	116-18-4220	1956	Contributor	Modern
1044	W	Fresno Street	116-18-0220	1958	Contributor	Ranch
1100	W	Fresno Street	116-18-380A	1917	Contributor	Modern
1121	W	Fresno Street	116-18-0400	1950	Contributor	Spanish Colonial Revival
1204	W	Fresno Street	116-18-3980	1955	Contributor	Modern
1212	W	Fresno Street	116-18-3970	1955	Contributor	Modern
1220	W	Fresno Street	116-18-3960	1955	Contributor	Modern
1228	W	Fresno Street	116-18-3950	1955	Contributor	Modern
1236	W	Fresno Street	116-18-3940	1955	Contributor	Modern
1302	W	Fresno Street	116-18-3750	1930	Contributor	Vernacular

United States Department of the Interior
National Park Service

National Register of Historic Places Continuation Sheet

Menlo Park Historic District

Name of Property

Pima, Arizona

County and State

Section number 7

Page 12

N/A

Name of multiple property listing

1310	W	Fresno Street	116-18-3700	1959	Contributor	Modern
1319	W	Fresno Street	116-18-076B	1955	Contributor	Vernacular
1320	W	Fresno Street	116-18-3710	1957	Contributor	Modern
1408	W	Fresno Street	116-15-0610	1928	Contributor	Vernacular
1424	W	Fresno Street	116-15-0640	1927	Contributor	Vernacular
1442	W	Fresno Street	116-15-0670	1925	Contributor	Vernacular
25	N	Grande Avenue	116-18-2490	1952	Contributor	Ranch
26-30	N	Grande Avenue	116-18-2170	1959	Contributor	Modern
31	N	Grande Avenue	116-18-2460	1950	Contributor	Transitional Ranch
40	N	Grande Avenue	116-18-2120	1950	Contributor	Ranch
41	N	Grande Avenue	116-18-242A	1960	Contributor	Modern
44	N	Grande Avenue	116-18-2090	1947	Contributor	Spanish Colonial Revival
53	N	Grande Avenue	116-18-2380	1919	Contributor	Bungalow
57	N	Grande Avenue	116-18-2370	1953	Contributor	Ranch
61	N	Grande Avenue	116-18-2340	1951	Contributor	Transitional Ranch
62	N	Grande Avenue	116-18-2080	1945	Contributor	Spanish Colonial Revival
75	N	Grande Avenue	116-18-2280	1960	Contributor	Ranch
117	N	Grande Avenue	116-18-158A	1921	Contributor	Bungalow
124-126	N	Grande Avenue	116-18-1710	1916	Contributor	Bungalow
130	N	Grande Avenue	116-18-1700	1946	Contributor	Bungalow
135	N	Grande Avenue	116-18-1520	1916	Contributor	Bungalow
136	N	Grande Avenue	116-18-1670	1964	Contributor	Modern
144	N	Grande Avenue	116-18-1660	1956	Contributor	Ranch
145	N	Grande Avenue	116-18-1490	1952	Contributor	Ranch
203	N	Grande Avenue	116-18-037A	1917	Contributor	Prairie
222	N	Grande Avenue	116-18-0140	1948	Contributor	Transitional Ranch
223	N	Grande Avenue	116-18-0330	1948	Contributor	Transitional Ranch
225	N	Grande Avenue	116-18-032A	1950	Contributor	Transitional Ranch
228	N	Grande Avenue	116-18-0130	1948	Contributor	Transitional Ranch
234	N	Grande Avenue	116-18-0100	1949	Contributor	Modern
238	N	Grande Avenue	116-18-0090	1956	Contributor	Ranch
239-241	N	Grande Avenue	116-18-0280	1950, 1970	Contributor	Transitional Ranch
242	N	Grande Avenue	116-18-0060	1956	Contributor	Ranch
248	N	Grande Avenue	116-18-0050	1949	Contributor	Ranch
14	S	Grande Avenue	116-21-031B	1925	Contributor	Bungalow
18	S	Grande Avenue	116-21-0320	1925	Contributor	Bungalow
22-24	S	Grande Avenue	116-21-0350	1924	Contributor	Bungalow
25	S	Grande Avenue	116-21-0010	1938	Contributor	Spanish Colonial Revival

United States Department of the Interior
National Park Service

National Register of Historic Places Continuation Sheet

Menlo Park Historic District
Name of Property

Pima, Arizona
County and State

Section number 7

Page 13

N/A
Name of multiple property listing

26	S	Grande Avenue	116-21-0360	1924	Contributor	Bungalow
31-33	S	Grande Avenue	116-21-0040	1958, 1960	Contributor	Neo-eclectic Spanish Colonial Revival
35	S	Grande Avenue	116-21-0050	1945, 1958	Contributor	Neo-eclectic Spanish Colonial Revival
36	S	Grande Avenue	116-21-0390	1926	Contributor	Spanish Colonial Revival
41-43	S	Grande Avenue	116-21-0060	1945	Contributor	Spanish Colonial Revival
51	S	Grande Avenue	116-21-0070	1945	Contributor	Spanish Colonial Revival
53-55	S	Grande Avenue	116-21-0080	1945	Contributor	Spanish Colonial Revival
59	S	Grande Avenue	116-21-0090	1940	Contributor	Spanish Colonial Revival
60	S	Grande Avenue	116-21-0400	1955	Contributor	Modern
63	S	Grande Avenue	116-21-0400	1945	Contributor	Bungalow
77-79	S	Grande Avenue	116-21-0110	1954	Contributor	Vernacular
102	S	Grande Avenue	116-21-0890	1960	Contributor	Ranch
103-105	S	Grande Avenue	116-21-0120	1945	Contributor	Vernacular
109	S	Grande Avenue	116-21-0130	1958	Contributor	Vernacular
134	S	Grande Avenue	116-21-0966	1935	Contributor	Spanish Colonial Revival
140	S	Grande Avenue	116-21-1000	1943	Contributor	Vernacular
144	S	Grande Avenue	116-21-1010	1946	Contributor	Spanish Colonial Revival
149	S	Grande Avenue	116-21-1210	1930	Contributor	Bungalow
211	S	Grande Avenue	116-21-2850	1929	Contributor	Vernacular
216	S	Grande Avenue	116-21-3270	1920s	Contributor	Spanish Colonial Revival
220	S	Grande Avenue	116-21-3290	1926	Contributor	Spanish Colonial Revival
227	S	Grande Avenue	116-21-283B	1929	Contributor	Vernacular
307	S	Grande Avenue	116-21-3410	1946	Contributor	Transitional Ranch
315	S	Grande Avenue	116-21-3430	1949	Contributor	Modern
327	S	Grande Avenue	116-21-352B	1955	Contributor	Ranch
347	S	Grande Avenue	116-21-353B	1955	Contributor	Ranch
350	S	Grande Avenue	116-21-3500	1877	Contributor	Sonoran
354	S	Grande Avenue	116-21-3510	1946	Contributor	Vernacular
930	W	Grandview Lane	116-21-2700	1940	Contributor	Vernacular
12	N	Linda Avenue	116-19-1340	1921	Contributor	Vernacular
17	N	Linda Avenue	116-20-006A	1915	Contributor	Bungalow
18	N	Linda Avenue	116-19-1350	1927	Contributor	Vernacular
23	N	Linda Avenue	116-20-006B	1948	Contributor	Spanish Colonial Revival
24	N	Linda Avenue	116-19-1360	1921	Contributor	Bungalow
30	N	Linda Avenue	116-19-1370	1927	Contributor	Spanish Colonial Revival
32	N	Linda Avenue	116-19-1380	1916	Contributor	Bungalow
33	N	Linda Avenue	116-19-1280	1954	Contributor	Ranch
36	N	Linda Avenue	116-19-139A	1916	Contributor	Bungalow

United States Department of the Interior
National Park Service

National Register of Historic Places Continuation Sheet

Menlo Park Historic District

Name of Property

Pima, Arizona

County and State

Section number 7Page 14N/A

Name of multiple property listing

25	N	Melrose Avenue	116-18-3030	1919	Contributor	Bungalow
29	N	Melrose Avenue	116-18-3020	1938	Contributor	Bungalow
30	N	Melrose Avenue	116-18-2730	1924	Contributor	Bungalow
36	N	Melrose Avenue	116-18-2720	1946	Contributor	Transitional Ranch
41	N	Melrose Avenue	116-18-2980	1942	Contributor	Spanish Colonial Revival
42	N	Melrose Avenue	116-18-2690	1948	Contributor	Spanish Colonial Revival
45	N	Melrose Avenue	116-18-2950	1960	Contributor	Modern
48	N	Melrose Avenue	116-18-2680	1931	Contributor	Vernacular
49	N	Melrose Avenue	116-18-2940	1957	Contributor	Ranch
55	N	Melrose Avenue	116-18-2910	1953	Contributor	Ranch
58	N	Melrose Avenue	116-18-2640	1916	Contributor	Bungalow
65	N	Melrose Avenue	116-18-2830	1919	Contributor	Bungalow
115	N	Melrose Avenue	116-18-1270	1947	Contributor	Spanish Colonial Revival
123	N	Melrose Avenue	116-18-1260	1916	Contributor	Bungalow
124	N	Melrose Avenue	116-18-1400	1917	Contributor	Bungalow
130	N	Melrose Avenue	116-18-1390	1922	Contributor	Spanish Colonial Revival
131-133	N	Melrose Avenue	116-18-1230	1947	Contributor	Pueblo Revival
136	N	Melrose Avenue	116-18-1360	1955	Contributor	Ranch
143	N	Melrose Avenue	116-18-1190	1917	Contributor	Bungalow
144	N	Melrose Avenue	116-18-1350	1937	Contributor	Transitional Ranch
201	N	Melrose Avenue	116-18-0730	1946	Contributor	Spanish Colonial Revival
211	N	Melrose Avenue	116-18-0720	1956	Contributor	Ranch
212	N	Melrose Avenue	116-18-0540	1959	Contributor	Ranch
217	N	Melrose Avenue	116-18-0690	1918	Contributor	Bungalow
218	N	Melrose Avenue	116-18-0500	1923	Contributor	Bungalow
219	N	Melrose Avenue	116-18-0680	1955	Contributor	Ranch
221	N	Melrose Avenue	116-18-0650	1921	Contributor	Bungalow
224	N	Melrose Avenue	116-18-0490	1923	Contributor	Bungalow
232	N	Melrose Avenue	116-18-0460	1927	Contributor	Bungalow
239	N	Melrose Avenue	116-18-0610	1947	Contributor	Transitional Ranch
241	N	Melrose Avenue	116-18-0600	1947	Contributor	Transitional Ranch
248	N	Melrose Avenue	116-18-0420	1959	Contributor	Modern
261	N	Melrose Avenue	116-18-0570	1958	Contributor	Modern
21	S	Melrose Avenue	116-21-0510	1936	Contributor	Spanish Colonial Revival
22	S	Melrose Avenue	116-21-0700	1964	Contributor	Ranch
30	S	Melrose Avenue	116-21-0710	1957	Contributor	Ranch
35	S	Melrose Avenue	116-21-0550	1957	Contributor	Vernacular
38	S	Melrose Avenue	116-21-0720	1949	Contributor	Territorial Revival
46	S	Melrose Avenue	116-21-0730	1950	Contributor	Vernacular

United States Department of the Interior
National Park Service

National Register of Historic Places Continuation Sheet

Menlo Park Historic District
Name of Property

Pima, Arizona
County and State

Section number 7

Page 15

N/A
Name of multiple property listing

52	S	Melrose Avenue	116-21-0740	1955	Contributor	Ranch
59	S	Melrose Avenue	116-21-0630	1950	Contributor	Transitional Ranch
64	S	Melrose Avenue	116-21-1130	1956	Contributor	Ranch
100	S	Melrose Avenue	116-21-1140	1927	Contributor	Craftsman
108	S	Melrose Avenue	116-21-1420	1946	Contributor	Spanish Colonial Revival
109	S	Melrose Avenue	116-21-0770	1954	Contributor	Transitional Ranch
114	S	Melrose Avenue	116-21-1430	1953	Contributor	Spanish Colonial Revival
118-122	S	Melrose Avenue	116-21-144A	1949	Contributor	Vernacular
123	S	Melrose Avenue	116-21-0180	1950	Contributor	Spanish Colonial Revival
125	S	Melrose Avenue	116-21-0800	1950	Contributor	Ranch
131	S	Melrose Avenue	116-21-088A	1923	Contributor	Vernacular
28	N	Melwood Avenue	116-18-1920	1952	Contributor	Ranch
29	N	Melwood Avenue	116-18-2150	1916	Contributor	Bungalow
33	N	Melwood Avenue	116-18-2140	1947	Contributor	Transitional Ranch
39	N	Melwood Avenue	116-18-2110	1947	Contributor	Transitional Ranch
44	N	Melwood Avenue	116-18-1910	1945	Contributor	Transitional Ranch
53	N	Melwood Avenue	116-18-2070	1922	Contributor	Bungalow
55	N	Melwood Avenue	116-18-2060	1922	Contributor	Bungalow
63	N	Melwood Avenue	116-18-198A	1923	Contributor	Bungalow
64	N	Melwood Avenue	116-18-3170	1956	Contributor	Ranch
77	N	Melwood Avenue	116-18-1970	1957	Contributor	Ranch
102	N	Melwood Avenue	116-18-1880	1954	Contributor	Ranch
115	N	Melwood Avenue	116-18-1730	1918	Contributor	Bungalow
120	N	Melwood Avenue	116-18-1860	1954	Contributor	Ranch
123	N	Melwood Avenue	116-18-1720	1920	Contributor	Bungalow
124	N	Melwood Avenue	116-18-1850	1917	Contributor	Bungalow
129	N	Melwood Avenue	116-18-1690	1926	Contributor	Bungalow
135	N	Melwood Avenue	116-18-1680	1949	Contributor	Modern
140	N	Melwood Avenue	116-18-183A	1923	Contributor	Bungalow
144	N	Melwood Avenue	116-18-182B	1923	Contributor	Spanish Colonial Revival
145	N	Melwood Avenue	116-18-1630	1941	Contributor	Transitional Ranch
200-202	N	Melwood Avenue	116-18-0020	1937	Contributor	Spanish Colonial Revival
201	N	Melwood Avenue	116-18-0180	1941	Contributor	Transitional Ranch
217	N	Melwood Avenue	116-18-0170	1905	Contributor	Bungalow
220-224	N	Melwood Avenue	116-18-001B	1947	Contributor	Transitional Ranch
225	N	Melwood Avenue	116-18-0120	1947	Contributor	Transitional Ranch
231	N	Melwood Avenue	116-18-0110	1957	Contributor	Ranch
237	N	Melwood Avenue	116-18-0080	1950	Contributor	Transitional Ranch
243	N	Melwood Avenue	116-18-0070	1950	Contributor	Ranch

United States Department of the Interior
National Park Service

National Register of Historic Places Continuation Sheet

Menlo Park Historic District
Name of Property

Pima, Arizona
County and State

Section number 7

Page 16

N/A
Name of multiple property listing

249	N	Melwood Avenue	116-18-0040	1946	Contributor	Transitional Ranch
304	N	Melwood Avenue	116-18-4230	1956	Contributor	Modern
314	N	Melwood Avenue	116-18-4240	1956	Contributor	Modern
324	N	Melwood Avenue	116-18-4250	1956	Contributor	Modern
344	N	Melwood Avenue	116-18-4270	1956	Contributor	Modern
333	S	Melwood Avenue	116-21-262A	1916	Contributor	Vernacular - side gable, massed plan
337	S	Melwood Avenue	116-21-261A	1946	Contributor	Vernacular - side gabled square house
401	S	Melwood Avenue	116-21-2600	1946	Contributor	Transitional Ranch
402	S	Melwood Avenue	116-21-0880	1923	Contributor	Spanish Colonial Revival
413	S	Melwood Avenue	116-21-2590	1921	Contributor	Bungalow
415	S	Melwood Avenue	116-21-2580	1921	Contributor	Bungalow
436	S	Melwood Avenue	116-21-289C	1950s	Contributor	Transitional Ranch
447	S	Melwood Avenue	116-21-2520	1948	Contributor	Spanish Colonial Revival
930	W	Mission Lane	116-21-2500	1940	Contributor	Vernacular
970	W	Mission Lane	116-21-352A	1956	Contributor	Sonoran Revival
912	W	Nearmont Drive	116-21-2970	1947	Contributor	Modern
920	W	Nearmont Drive	116-21-2980	1947	Contributor	Modern
923	W	Nearmont Drive	116-21-0790	1930	Contributor	Territorial Revival
928	W	Nearmont Drive	116-21-2990	1947	Contributor	Modern
929	W	Nearmont Drive	116-21-2800	1947	Contributor	Transitional Ranch
933	W	Nearmont Drive	116-21-2810	1931	Contributor	Bungalow
941	W	Nearmont Drive	116-21-3390	1937	Contributor	Bungalow
944	W	Nearmont Drive	116-21-3010	1947	Contributor	Modern
947	W	Nearmont Drive	116-21-3380	1953	Contributor	Spanish Colonial Revival
22	N	Palomas Aveune	116-18-2480	1947	Contributor	Transitional Ranch
25	N	Palomas Aveune	116-18-2750	1927	Contributor	Bungalow
26	N	Palomas Aveune	116-18-2470	1955	Contributor	Ranch
29	N	Palomas Aveune	116-18-2740	1920	Contributor	Bungalow
32	N	Palomas Aveune	116-18-243A	1955	Contributor	Ranch
38	N	Palomas Avenue	116-18-2400	1954	Contributor	Spanish Colonial Revival
42	N	Palomas Avenue	116-18-2390	1954	Contributor	Ranch
45	N	Palomas Avenue	116-18-2660	1952	Contributor	Transitional Ranch
48	N	Palomas Avenue	116-18-2360	1923	Contributor	Bungalow
59	N	Palomas Avenue	116-18-2630	1949	Contributor	Transitional Ranch
62	N	Palomas Avenue	116-18-2350	1949	Contributor	Transitional Ranch
64	N	Palomas Avenue	116-18-2320	1955	Contributor	Ranch
124	N	Palomas Avenue	116-18-1550	1955	Contributor	Modern
135	N	Palomas Avenue	116-18-1370	1918	Contributor	Bungalow
144	N	Palomas Avenue	116-18-1500	1920	Contributor	Bungalow

United States Department of the Interior
National Park Service

National Register of Historic Places Continuation Sheet

Menlo Park Historic District
Name of Property

Pima, Arizona
County and State

Section number 7

Page 17

N/A
Name of multiple property listing

145	N	Palomas Avenue	116-18-1340	1959	Contributor	Modern
222	N	Palomas Avenue	116-18-0310	1950	Contributor	Modern
225	N	Palomas Avenue	116-18-0480	1951	Contributor	Ranch
228	N	Palomas Avenue	116-18-0300	1964	Contributor	Ranch
234	N	Palomas Avenue	116-18-0270	1949	Contributor	Modern
239	N	Palomas Avenue	116-18-0430	1954	Contributor	Ranch
242	N	Palomas Avenue	116-18-0230	1959	Contributor	Modern
21	S	Palomas Avenue	116-21-0290	1926	Contributor	Spanish Colonial Revival
28	S	Palomas Avenue	116-21-0530	1949	Contributor	Transitional Ranch
35	S	Palomas Avenue	116-21-0300	1923	Contributor	Spanish Colonial Revival
37	S	Palomas Avenue	116-21-0330	1925	Contributor	Bungalow
38	S	Palomas Avenue	116-21-0540	1926	Contributor	Spanish Colonial Revival
41	S	Palomas Avenue	116-21-0340	1927	Contributor	Ranch
45	S	Palomas Avenue	116-21-0370	1962	Contributor	Ranch
46	S	Palomas Avenue	116-21-0610	1927	Contributor	Spanish Colonial Revival
49	S	Palomas Avenue	116-21-0380	1926	Contributor	Spanish Colonial Revival
52	S	Palomas Avenue	116-21-0620	1941	Contributor	Spanish Colonial Revival
55	S	Palomas Avenue	116-21-0410	1955	Contributor	Ranch
64	S	Palomas Avenue	116-21-0650	1949	Contributor	Modern
107-109	S	Palomas Avenue	116-21-0900	1955	Contributor	Ranch
115	S	Palomas Avenue	116-21-0940	1955	Contributor	Vernacular
127	S	Palomas Avenue	116-21-0980	1948	Contributor	Transitional Ranch
128-130	S	Palomas Avenue	116-21-0830	1934	Contributor	Bungalow
134	S	Palomas Avenue	116-21-0860	1929	Contributor	Bungalow
140	S	Palomas Avenue	116-21-0870	1936	Contributor	Bungalow
141	S	Palomas Avenue	116-21-1020	1949	Contributor	Spanish Colonial Revival
200	S	Palomas Avenue	116-21-3230	1960s	Contributor	Vernacular
1302	W	Pennington Street	116-21-1850	1962	Contributor	Modern
1334	W	Pennington Street	116-21-1810	1950	Contributor	Modern
1336	W	Pennington Street	116-21-1800	1935	Contributor	Spanish Colonial Revival
124	N	Silverbell Road	116-18-1160	1935	Contributor	Vernacular
1001	W	Spruce Street	116-21-3220	1958	Contributor	Modern
1124	W	Spruce Street	116-21-1610	1946	Contributor	Spanish Colonial Revival
1130	W	Spruce Street	116-21-1590	1946	Contributor	Spanish Colonial Revival
25	N	Westmoreland Avenue	116-21-192B	1910	Contributor	Vernacular
36-38	N	Westmoreland Avenue	116-18-3000	1964	Contributor	Modern
44-46	N	Westmoreland Avenue	116-18-2690	1927	Contributor	Bungalow
56	N	Westmoreland Avenue	116-18-2920	1920	Contributor	Bungalow
64	N	Westmoreland Avenue	116-18-2880	1917	Contributor	Vernacular

United States Department of the Interior
National Park Service

National Register of Historic Places Continuation Sheet

Menlo Park Historic District
Name of Property

Pima, Arizona
County and State

Section number 7

Page 18

N/A
Name of multiple property listing

71	N	Westmoreland Avenue	116-21-1780	1952	Contributor	Ranch
115	N	Westmoreland Avenue	116-18-1090	1930	Contributor	Spanish Colonial Revival
123	N	Westmoreland Avenue	116-18-1070	1920	Contributor	Spanish Colonial Revival
148	N	Westmoreland Avenue	116-18-1200	1948	Contributor	Transitional Ranch
205	N	Westmoreland Avenue	116-18-0910	1959	Contributor	Ranch
206	N	Westmoreland Avenue	116-18-0740	1955	Contributor	Ranch
211	N	Westmoreland Avenue	116-18-0900	1949	Contributor	Vernacular
215	N	Westmoreland Avenue	116-18-0870	1924	Contributor	Vernacular
218	N	Westmoreland Avenue	116-18-0700	1958	Contributor	Ranch
223	N	Westmoreland Avenue	116-18-0860	1925	Contributor	Vernacular
229	N	Westmoreland Avenue	116-18-0830	1927	Contributor	Vernacular
236	N	Westmoreland Avenue	116-18-0630	1953	Contributor	Ranch
244-246	N	Westmoreland Avenue	116-18-0620	1948	Contributor	Modern
248-250	N	Westmoreland Avenue	116-18-0590	1949	Contributor	Modern
249	N	Westmoreland Avenue	116-18-075B	1947	Contributor	Modern
323	N	Westmoreland Avenue	116-18-3740	1960	Contributor	Modern
333	N	Westmoreland Avenue	116-18-373A	1959	Contributor	Modern
353	N	Westmoreland Avenue	116-18-3770	1959	Contributor	Ranch
363	N	Westmoreland Avenue	116-18-3780	1958	Contributor	Modern
373	N	Westmoreland Avenue	116-18-379A	1959	Contributor	Modern
123	S	Westmoreland Avenue	116-21-1080	1922	Contributor	Bungalow
124	S	Westmoreland Avenue	116-21-1270	1922	Contributor	Spanish Colonial Revival
129	S	Westmoreland Avenue	116-21-1090	1924	Contributor	Vernacular
130	S	Westmoreland Avenue	116-21-1300	1926	Contributor	Vernacular
135	S	Westmoreland Avenue	116-21-1100	1955	Contributor	Ranch
142-144	S	Westmoreland Avenue	116-21-1340	1964	Contributor	Modern
145	S	Westmoreland Avenue	116-21-1110	1949	Contributor	Modern
		NON CONTRIBUTORS				
704	W	Alameda Street	116-19-2080	1983	Age	Modern
710	W	Alameda Street	116-19-2090	1983	Age	Neo-eclectic Spanish Colonial Revival
720	W	Alameda Street	116-19-2100	1984	Age	Neo-eclectic Spanish Colonial Revival
730	W	Alameda Street	116-19-2110	1984	Age	Neo-eclectic Spanish Colonial Revival
740	W	Alameda Street	116-19-2120	1984	Age	Neo-eclectic Spanish Colonial Revival
750	W	Alameda Street	116-19-213A	1984	Age	Neo-eclectic Spanish Colonial Revival
800	W	Alameda Street	116-19-214A	1984	Age	Neo-eclectic Spanish Colonial Revival
808	W	Alameda Street	116-19-2150	1983	Age	Neo-eclectic Spanish Colonial Revival
811	W	Alameda Street	116-19-124A	1995	Age	Modern
816	W	Alameda Street	116-19-2160	1984	Age	Neo-eclectic Spanish Colonial Revival
824	W	Alameda Street	116-19-2170	1984	Age	Modern

United States Department of the Interior
National Park Service

National Register of Historic Places Continuation Sheet

Menlo Park Historic District
Name of Property

Pima, Arizona
County and State

Section number 7

Page 19

N/A
Name of multiple property listing

826	W	Alameda Street	116-19-180A	2000	Age	Manufactured home
836	W	Alameda Street	116-19-1910	1970	Age	Modern
844	W	Alameda Street	116-19-1880	1972	Age	Neo-eclectic Territorial
850	W	Alameda Street	116-19-187C	2003	Age	Neo-eclectic Vernacular
854	W	Alameda Street	116-19-187D	2003	Age	Neo-eclectic Spanish Colonial Revival
870-872	W	Alameda Street	116-18-1890	1956	Wall	Modern
873-875	W	Alameda Street	116-18-3160	1973	Age	Modern
908	W	Alameda Street	116-18-174A	1970	Age	Neo-eclectic Ranch
915	W	Alameda Street	116-18-200A	1974	Age	Modern
1033	W	Alameda Street	116-18-2330	1920	Integrity	Bungalow
1109	W	Alameda Street	116-18-2580	1920	Integrity	Bungalow
1111	W	Alameda Street	116-18-2590	1969	Age	Modern
1128-1130	W	Alameda Street	116-18-1460	1965	Age	Ranch
1203	W	Alameda Street	116-18-2840	1937	Integrity	Pueblo Revival
1211	W	Alameda Street	116-18-2850	1926	Integrity	Spanish Colonial Revival
1217	W	Alameda Street	116-18-2860	1926	Integrity	Bungalow
1220	W	Alameda Street	116-18-1310	1994	Age	Neo-eclectic Vernacular
1223	W	Alameda Street	116-18-2870	2005	Age	Neo-eclectic Modern
1309	W	Alameda Street	116-21-1770	1965	Age	Modern
1316	W	Alameda Street	116-21-1670	1950s	Integrity	Ranch
1321-1323	W	Alameda Street	116-21-174C	1970	Age	Neo-eclectic Vernacular
1331	W	Alameda Street	116-21-174B	1990	Age	Neo-eclectic Vernacular
1333	W	Alameda Street	116-21-1730	1954	Integrity	Neo-eclectic Ranch
1343	W	Alameda Street	116-21-171B	2000	Age	Neo-eclectic Vernacular
17	N	Bonita Avenue	116-19-1470	1970	Age	Modern
19	N	Bonita Avenue	116-19-1460	1971	Age	Modern
1002-1004	W	Cedar Street	116-21-0430	1975	Age	Neo-eclectic Sonoran Revival
1101	W	Cedar Street	116-21-0750	1972	Age	Neo-eclectic Ranch
1222	W	Cedar Street	116-21-1120	1966	Age	Ranch
901	W	Clearwater Drive	116-21-2650	1982	Age	Neo-eclectic Sonoran Revival
911	W	Clearwater Drive	116-21-2660	1982	Age	Neo-eclectic Modern
921	W	Clearwater Drive	116-21-2670	1989	Age	Neo-eclectic Sonoran Revival
931	W	Clearwater Drive	116-21-2680	ca. 1916	Integrity	Vernacular
941	W	Clearwater Drive	116-21-2690	1930s	Integrity	Vernacular
701-707	W	Congress Street	116-19-131A	1930	Integrity	Vernacular
801	W	Congress Street	116-20-004A	1974	Age	Modern
839	W	Congress Street	116-21-3020	1977	Age	Modern
910	W	Congress Street	116-21-3040	1921	Integrity	Service station
913	W	Congress Street	116-18-2230	1929	Integrity	Bungalow

United States Department of the Interior
National Park Service

National Register of Historic Places Continuation Sheet

Menlo Park Historic District
Name of Property

Pima, Arizona
County and State

Section number 7Page 20

N/A
Name of multiple property listing

921	W	Congress Street	116-18-224A	1916	Integrity	Bungalow
1021	W	Congress Street	116-18-2520	1980	Age	Modern
1024	W	Congress Street	116-21-0250	1948	Integrity	Transitional Ranch
1035	W	Congress Street	116-18-254C	2004	Age	Neo-eclectic Vernacular
1108	W	Congress Street	116-21-0450	1977	Age	Ranch
1112	W	Congress Street	116-18-2780	2000	Age	Neo-eclectic Vernacular
1114	W	Congress Street	116-21-0460	1972	Age	Modern
1124	W	Congress Street	116-21-0470	1969	Age	Modern
1216	W	Congress Street	116-21-0680	1972	Age	Modern
1235	W	Congress Street	116-18-3050	1920	Wall	Vernacular
1300	W	Congress Street	116-21-200D	2007	Age	Vernacular
1304	W	Congress Street	116-21-1160	2007	Age	Spanish Colonial Revival
1320-1340	W	Congress Street	116-21-1990	1988	Age	Modern
1325	W	Congress Street	116-21-1170	1965	Age	Modern
1355	W	Congress Street	116-21-1190	1926	Integrity	Bungalow
1360-1362	W	Congress Street	116-21-1970	1987	Age	Vernacular
202	N	Cuesta Avenue	116-18-092B	1973	Age	Modern
214	N	Cuesta Avenue	116-18-0880	1976	Age	Neo-eclectic Spanish Colonial Revival
218	N	Cuesta Avenue	116-18-0850	1975	Age	Modern
234	N	Cuesta Avenue	116-18-076C	1975	Age	Vernacular
119	S	Cuesta Avenue	116-21-1250	1960	Integrity	Modern
150	S	Cuesta Avenue	116-21-1380	2001	Age	Neo-eclectic Spanish Colonial Revival
53	N	Davila Circle	116-19-1170	1982	Age	Neo-eclectic Ranch
901	W	Emery Street	116-18-4040	1956	Integrity	Neo-eclectic Pueblo Revival
1302	W	Emery Street	116-18-359A	1972	Age	Neo-eclectic Ranch
1336	W	Emery Street	116-18-362B	2007	Age	Neo-eclectic Vernacular
1338	W	Emery Street	116-18-362C	2007	Age	Neo-eclectic Vernacular
1349	W	Emery Street	116-18-3660	1972	Age	Modern
911	W	Estrada Street	116-18-4150	1956	Integrity	Modern
912	W	Estrada Street	116-18-4060	1963	Contributor	Modern
951	W	Estrada Street	116-18-4110	1956	Integrity	Modern
1204	W	Estrada Place	116-18-3890	1955	Integrity	Modern
834	W	Franklin Street	116-19-186C	1918	Integrity	Bungalow
835	W	Franklin Street	116-19-1840	1954	Integrity	Modern
843	W	Franklin Street	116-18-0030	1930	Integrity	Spanish Colonial Revival
849	W	Franklin Street	116-18-182C	1977	Age	Modern
929	W	Franklin Street	116-18-1650	1940	Integrity	Modern
1030	W	Franklin Street	116-18-0380	1972	Age	Ranch
1150	W	Franklin Street	116-18-0550	1976	Age	Modern

United States Department of the Interior
National Park Service

National Register of Historic Places Continuation Sheet

Menlo Park Historic District

Name of Property

Pima, Arizona

County and State

Section number 7

Page 21

N/A

Name of multiple property listing

1305	W	Franklin Street	116-18-110B	1940	Integrity	Spanish Colonial Revival
1307	W	Franklin Street	116-18-111C	1985	Age	Ranch
1309	W	Franklin Street	116-18-111B	1985	Age	Vernacular
1343	W	Franklin Street	116-18-114C	1985	Age	Modern
1001	W	Fresno Street	116-18-0210	1974	Age	Ranch
1101	W	Fresno Street	116-18-0390	1972	Age	Ranch
1135	W	Fresno Street	116-18-041A	1976	Age	Modern
1145	W	Fresno Street	116-18-0418	1976	Age	Neo-eclectic Spanish Colonial Revival
1245	W	Fresno Street	116-18-0580	1974	Age	Neo-eclectic Territorial
1311	W	Fresno Street	116-18-075A	1977	Age	Modern
1321	W	Fresno Street	116-18-077A	1925	Integrity	Vernacular
1341	W	Fresno Street	116-18-078A	1947	Integrity	Bungalow
1402	W	Fresno Street	116-15-0600	1987	Age	Vernacular
1410-1412	W	Fresno Street	116-15-0620	1985	Age	Vernacular
1418	W	Fresno Street	116-15-0630	1925	Integrity	Vernacular
1430	W	Fresno Street	116-15-0650	1928	Integrity	Vernacular
1434	W	Fresno Street	116-15-0660	1926	Integrity	Vernacular
36	N	Grande Avenue	116-18-213A	1980	Age	Vernacular
47	N	Grande Avenue	116-18-2410	1971	Age	Modern
70	N	Grande Avenue	116-18-2040	1972	Age	Modern
216	N	Grande Avenue	116-18-0150	1947	Integrity	Modern
10	S	Grande Avenue	116-21-0280	1991	Age	Vernacular
27-29	S	Grande Avenue	116-21-0030	1966	Age	Neo-eclectic Spanish Colonial Revival
37	S	Grande Avenue	116-21-0050	1940	Integrity	Spanish Colonial Revival
119	S	Grande Avenue	116-21-0140	1970	Age	Neo-eclectic Ranch
137-139	S	Grande Avenue	116-21-017A	1985	Age	Vernacular
141	S	Grande Avenue	116-21-0200	1984	Age	Neo-eclectic Vernacular
145	S	Grande Avenue	116-21-0190	1983	Age	Neo-eclectic Ranch
214	S	Grande Avenue	116-21-3210	1939	Integrity	Spanish Colonial Revival
226	S	Grande Avenue	116-21-3300	1941	Integrity	Vernacular
227	S	Grande Avenue	116-21-283A	1929	Integrity	Vernacular
244	S	Grande Avenue	116-21-3360	1945	Integrity	Neo-eclectic Spanish Colonial Revival
250	S	Grande Avenue	116-21-337A	1940	Wall	Spanish Colonial Revival
300	S	Grande Avenue	116-21-345A	1990	Age	Neo-eclectic Bungalow
305	S	Grande Avenue	116-21-342A	1987	Age	Neo-eclectic Bungalow
934	W	Grandview Lane	116-21-2730	1950	Integrity	Spanish Colonial Revival
37	N	Linda Avenue	116-19-1270	1965	Age	Ranch
47	N	Linda Avenue	116-19-1260	1968	Age	Modern
59	N	Linda Avenue	116-19-1250	1990	Age	Modern

United States Department of the Interior
National Park Service

National Register of Historic Places Continuation Sheet

Menlo Park Historic District
Name of Property

Pima, Arizona
County and State

Section number 7Page 22

N/A
Name of multiple property listing

26	N	Melrose Avenue	116-18-2760	1955	Age	Vernacular
35	N	Melrose Avenue	116-18-2990	1977	Age	Modern
52	N	Melrose Avenue	116-18-2650	1957	Integrity	Bungalow
118	N	Melrose Avenue	116-18-148B	1968	Age	Modern
229	N	Melrose Avenue	116-18-0640	1973	Age	Modern
240	N	Melrose Avenue	116-18-0450	1980s	Age	Vernacular
102	S	Melrose Avenue	116-21-1410	1976	Age	Neo-eclectic Modern
23	S	Melrose Avenue	116-21-0520	1974	Age	Modern
39-41	S	Melrose Avenue	116-21-0560	1969	Age	Modern
43-45	S	Melrose Avenue	116-21-0590	1971	Age	Modern
51-53	S	Melrose Avenue	116-21-0600	1978	Age	Modern
65-67	S	Melrose Avenue	116-21-0640	1976	Age	Modern
126	S	Melrose Avenue	116-21-1460	1950	Integrity	Vernacular
127	S	Melrose Avenue	116-21-085A	1979	Age	Neo-eclectic Sonoran Revival
23	N	Melwood Avenue	116-18-2200	1943	Integrity	Spanish Colonial Revival
24	N	Melwood Avenue	116-18-1930	1950	Integrity	Ranch
45	N	Melwood Avenue	116-18-2100	1923	Integrity	Bungalow
50-52	N	Melwood Avenue	116-18-3190	1979	Age	Modern
54	N	Melwood Avenue	116-18-3180	1956	Integrity	Ranch
110	N	Melwood Avenue	116-18-1870	1969	Age	Modern
228	N	Melwood Avenue	116-18-001D	1995	Age	Modern
254	N	Melwood Avenue	116-19-185F	1980	Age	Modern
258	N	Melwood Avenue	116-19-185E	1980	Age	Modern
334	N	Melwood Avenue	116-18-4260	1956	Integrity	Ranch
354	N	Melwood Avenue	116-18-4280	1956	Integrity	Modern
364	N	Melwood Avenue	116-18-4290	1956	Integrity	Modern
374	N	Melwood Avenue	116-18-4300	1956	Wall	Modern
433	S	Melwood Avenue	116-21-255B	1970s	Age	Neo-eclectic Modern
441	S	Melwood Avenue	116-21-254A	1951	Integrity	Spanish Colonial Revival
443	S	Melwood Avenue	116-21-2530	1936	Integrity	Spanish Colonial Revival
459	S	Melwood Avenue	116-21-2510	1911	Integrity	Vernacular
920, 937	W	Mission Lane	116-21-295B	1987	Age	Vernacular
931	W	Mission Lane	116-21-291A	1983	Age	Modern
980-990	W	Mission Lane	116-21-354B	1984	Age	Vernacular
901	W	Nearmont Drive	116-21-2740	1946	Integrity	Modern
902	W	Nearmont Drive	116-21-2960	1985	Age	Modern
907	W	Nearmont Drive	116-21-276A	1984	Age	Modern
921	W	Nearmont Drive	116-21-2780	1980s	Age	Neo-eclectic Modern
935	W	Nearmont Drive	116-21-3400	1941	Integrity	Bungalow

United States Department of the Interior
National Park Service

National Register of Historic Places Continuation Sheet

Menlo Park Historic District
Name of Property

Pima, Arizona
County and State

Section number 7

Page 23

N/A
Name of multiple property listing

936	W	Nearmont Drive	116-21-3000	1947	Integrity	Modern
31	N	Palomas Avenue	116-18-2710	1998	Age	Vernacular
35	N	Palomas Avenue	116-18-2700	1984	Age	Neo-eclectic Territorial
39	N	Palomas Avenue	116-18-2670	1965	Age	Modern
125-127	N	Palomas Avenue	116-18-1410	1970s	Age	Modern
130	N	Palomas Avenue	116-18-1540	1974	Age	Modern
131-133	N	Palomas Avenue	116-18-1380	1978	Age	Modern
201	N	Palomas Avenue	116-18-0560	1975	Age	Ranch
208	N	Palomas Avenue	116-18-035A	1948	Integrity	Transitional Ranch
211	N	Palomas Avenue	116-18-0510	1924	Integrity	Bungalow
227-229	N	Palomas Avenue	116-18-0470	1948	Integrity	Spanish Colonial Revival
235	N	Palomas Avenue	116-18-0440	1968	Age	Ranch
40	S	Palomas Avenue	116-21-0570	recent	Age	Neo-eclectic Vernacular
42	S	Palomas Avenue	116-21-0580	1927	Integrity	Spanish Colonial Revival
65	S	Palomas Avenue	116-21-0420	1950s	Wall	Ranch
110	S	Palomas Avenue	116-21-0780	1965	Age	Modern
111	S	Palomas Avenue	116-21-0910	1957	Integrity	Ranch
116	S	Palomas Avenue	116-21-0790	1955	Wall	Ranch
847	W	Park Road	116-18-001C	1995	Age	Vernacular
1315	W	Pennington Street	116-21-192D	1950s	Integrity	Modern
1316	W	Pennington Street	116-21-1840	1969	Age	Modern
1322	W	Pennington Street	116-21-1830	1973	Age	Modern
1326	W	Pennington Street	116-21-1820	1981	Age	Neo-eclectic Modern
1329	W	Pennington Street	116-21-3650	1978	Age	Modern
98	N	Silverbell Road	116-21-162C	2005	Age	Neo-eclectic Pueblo Revival
100	N	Silverbell Road	116-21-162B	1998	Age	Neo-eclectic Spanish Colonial Revival
250	N	Silverbell Road	116-18-093A	1985	Age	Modern
302	N	Silverbell Road	116-18-072B	2000	Age	Neo-eclectic Vernacular
304	N	Silverbell Road	116-15-071B	2007	Age	Neo-eclectic Vernacular
306	N	Silverbell Road	116-15-0690	1970s	Age	Neo-eclectic Vernacular
308	N	Silverbell Road	116-15-068A	2007	Age	Neo-eclectic Vernacular
310	N	Silverbell Road	116-15-070A	1970s	Age	Neo-eclectic Spanish Colonial Revival
1126	W	Spruce Street	116-21-1600	1946	Integrity	Bungalow
16-18	N	Westmoreland Avenue	116-18-304A	1977	Age	Neo-eclectic Ranch
26-30	N	Westmoreland Avenue	116-18-3010	1982	Age	Neo-eclectic Ranch
35	N	Westmoreland Avenue	116-21-192C	1963	Integrity	Modern
40-42	N	Westmoreland Avenue	116-18-2970	1981	Age	Modern
48	N	Westmoreland Avenue	116-18-2930	1935	Integrity	Transitional Ranch
101-103	N	Westmoreland Avenue	116-21-1690	1975	Age	Neo-eclectic Spanish Colonial Revival

United States Department of the Interior
National Park Service

National Register of Historic Places Continuation Sheet

Menlo Park Historic District
Name of Property

Pima, Arizona
County and State

Section number 7

Page 24

N/A
Name of multiple property listing

124	N	Westmoreland Avenue	116-18-125A	2007	Age	Neo-eclectic Modern
126-128	N	Westmoreland Avenue	116-18-1240	1965	Age	Modern
136	N	Westmoreland Avenue	116-18-1210	1975	Age	Neo-eclectic Territorial
145	N	Westmoreland Avenue	116-18-104A	1973	Age	Ranch
212	N	Westmoreland Avenue	116-18-0710	1927	Integrity	Bungalow
224	N	Westmoreland Avenue	116-18-0670	1977	Age	Neo-eclectic Spanish Colonial Revival
230	N	Westmoreland Avenue	116-18-0660	1976	Age	Neo-eclectic
235	N	Westmoreland Avenue	116-18-0820	1984	Age	Vernacular
239	N	Westmoreland Avenue	116-18-0800	1974	Age	Neo-eclectic Vernacular
247	N	Westmoreland Avenue	116-18-0790	1925	Integrity	Vernacular
343	N	Westmoreland Avenue	116-18-3760	1971	Age	Modern
110	S	Westmoreland Avenue	116-21-1220	1922	Integrity	Bungalow
111	S	Westmoreland Avenue	116-21-1050	1967	Age	Modern
118	S	Westmoreland Avenue	116-21-1230	1922	Integrity	Spanish Colonial Revival
119	S	Westmoreland Avenue	116-21-1060	1951	Integrity	Spanish Colonial Revival
121	S	Westmoreland Avenue	116-21-1070	1925	Integrity	Spanish Colonial Revival
122	S	Westmoreland Avenue	116-21-1260	1922	Integrity	Spanish Colonial Revival
150	S	Westmoreland Avenue	116-21-1350	1978	Age	Vernacular

United States Department of the Interior
National Park Service

National Register of Historic Places Continuation Sheet

Menlo Park Historic District

Name of Property

Pima, Arizona

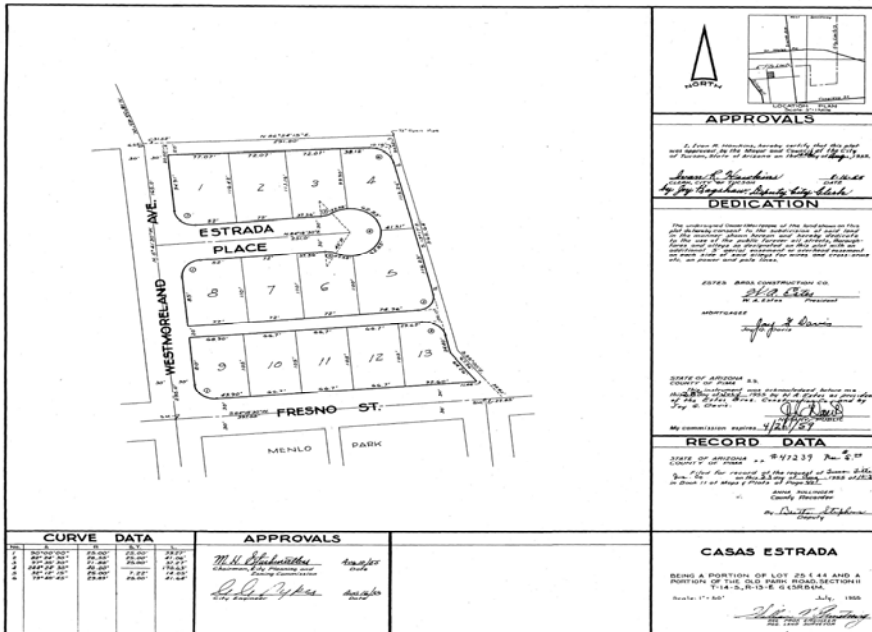
County and State

Section number Maps

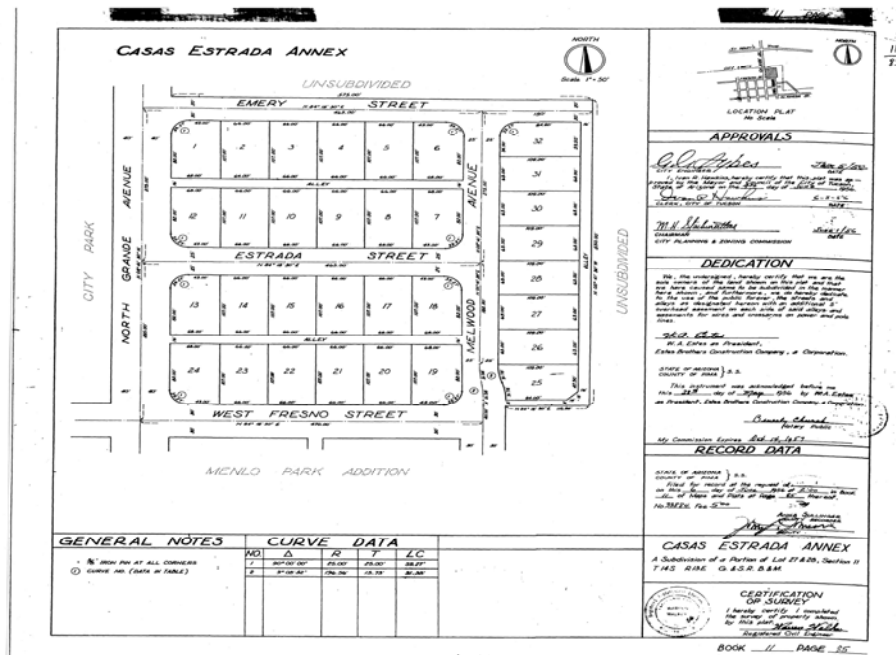
Page 59

N/A

Name of multiple property listing



Map 15. Casas Estrada (PCR 1955)



Map 16. Casas Estrada Annex (PCR 1956)