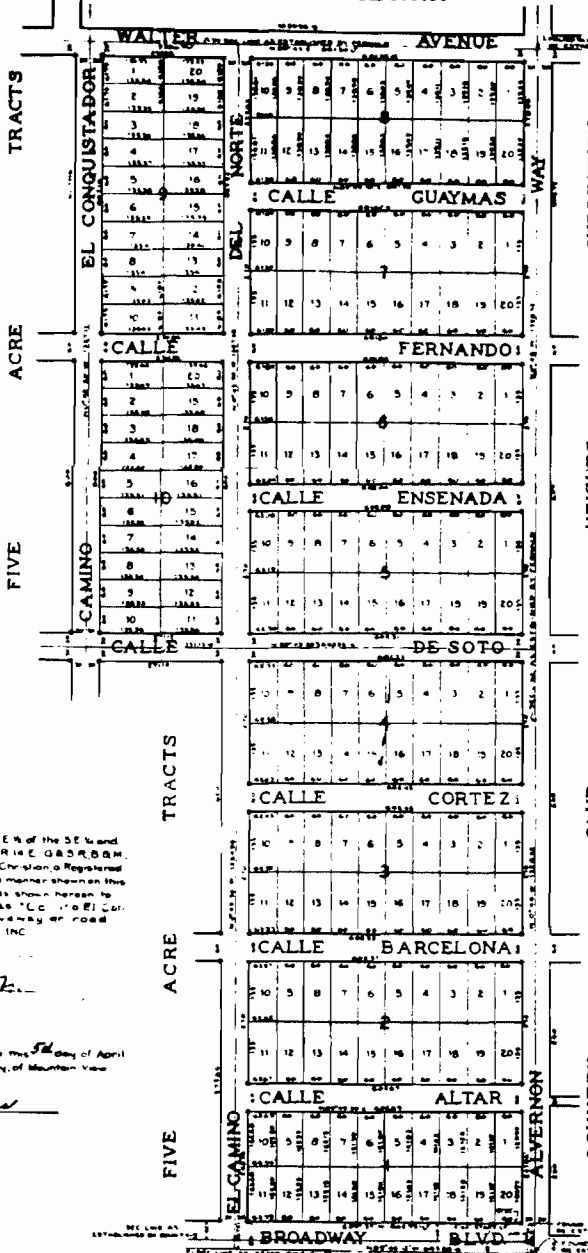


SPEEDWAY VIEW ADDITION



Approved: *Geo. T. Stone*  
City Engineer

I, C. Cron Recorder and Ex-officio City Clerk of the City of Tucson Arizona hereby certify that this map was presented by the Mayor and Council of the City of Tucson at a meeting held on the 7th day of April 1930 and that a quorum was present thereat.

Approved: *J. P. Christian*  
County Engineer

We, the Board of Supervisors of Pima County Arizona hereby certify that this map was approved by the Board of Supervisors of Pima County Arizona at a meeting held on the 7th day of April 1930 and that a quorum was present thereat.

Witness my hand and the Seal of the Board of Supervisors this 7th day of April 1930.

Witnessed by: *J. P. Christian*  
County Engineer

The undersigned hereby certifies that it is the sole owner of the E 1/2 of the E 1/4 of the SE 1/4 and the E 1/2 of the W 1/2 of the NE 1/4 of the SE 1/4 of Section 9 T. 14 S. R. 14 E. G & SR. B & M. Pima County, Arizona shown herein, and that it has caused J. C. P. Christian a Registered Professional Engineer to subdivide and survey the said land in the manner shown on this plat and it hereby grants and dedicates all roads and thoroughfares shown herein to the use of the public to every section of the road shown herein as "CALLE DEL NORTE" which is hereby dedicated for private driveway or road.

MOUNTAIN VIEW HOMESITES INC.  
By *J. C. P. Christian*  
President  
Attest: *S. M. Matthews Jr.*  
Secretary

STATE OF ARIZONA }  
COUNTY OF PIMA }  
This instrument was acknowledged before me this 5th day of April 1930 by S. M. Matthews as President and S. M. Matthews Jr. as Secretary of Mountain View Homesites, Inc., an Arizona Corporation.

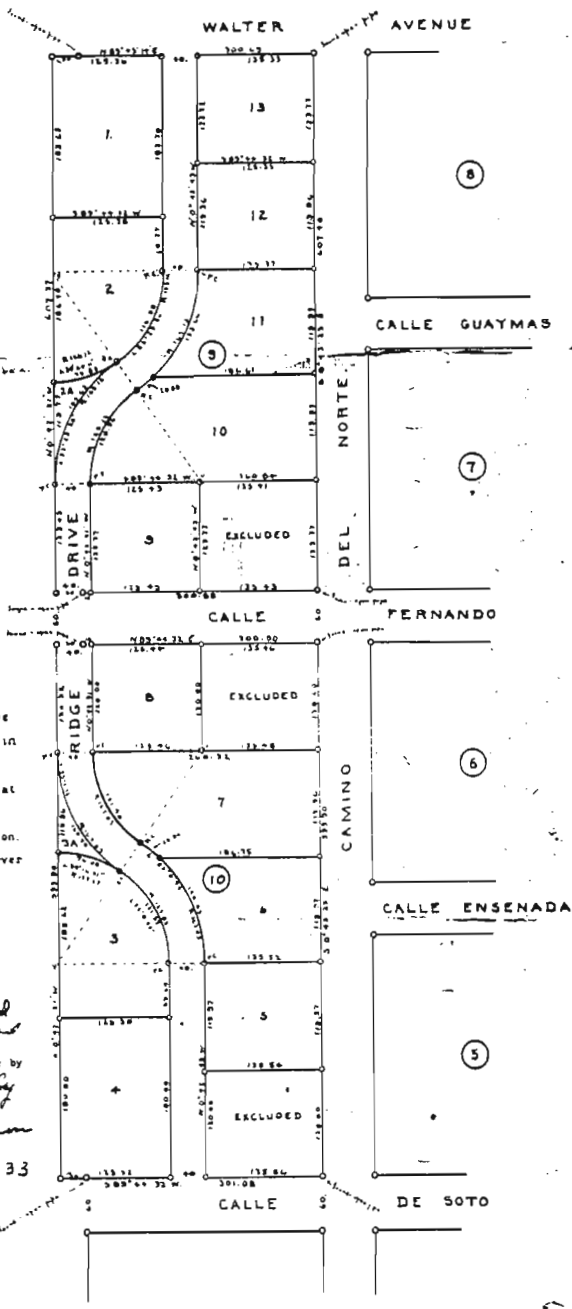
*E. J. Lewis*  
Notary Public  
My commission expires January 4, 1932.

RANDOLPH PARK MUNICIPAL GOLF COURSE

Note: Section pins of all points indicated by circles except where marked found. All lot corners marked by 2" x 2" wooden pins.

EL MONTEVIDEO ESTATES  
VIEW OF THE MOUNTAINS  
A SUBDIVISION OF  
PART OF THE E 1/2 OF THE SE 1/4 OF  
SECTION 9 T. 14 S. R. 14 E. G & SR. B & M.  
SCALE 1" = 160' - APRIL, 1930.

COPIED FROM RECORDS @ AZ. HISTORICAL SOCIETY. 3/14/89



We, the undersigned, hereby certify that we are the sole owners of the land contained in RIDGELAND RE-SUBDIVISION OF BLOCKS 9 & 10, EL MONTEVIDEO ESTATES, as shown on this plat (less exclusions) and we hereby agree to the subdivision of said land as shown hereon, and dedicate to the use of the public forever the thoroughfares shown hereon.

*P. N. Williams*  
*for S. Williams*  
*Paul V. Sutherland*  
*Kathryn B. Sutherland*

This instrument was acknowledged before me by the above signatories this 5th day of July 1930.

*Justine E. Mason*  
 Notary Public

My commission expires July 16-19 33

Approved *Geo. T. Brown*  
 City Engineer.

I, L. O. Cowan, Recorder and Ex-Officio Clerk of the City of Tucson, hereby certify that this plat was approved by the Mayor and Common Council of the City of Tucson, at a meeting held on the 10th day of June, 1930.

Signed *L. O. Cowan*  
 Recorder and Ex-Officio City Clerk.

Approved *W. Massey*  
 Chairman of the Board of Supervisors

Approved \_\_\_\_\_  
 County Engineer.

I, J. F. Ryan, Clerk of the Board of Supervisors of Pima County, Arizona, hereby certify that this plat was approved by the Board of Supervisors at a meeting held on the 7 day of July, 1930.

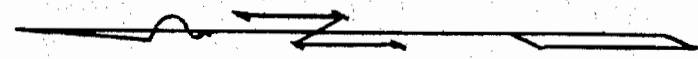
Signed *J. F. Ryan*  
 Clerk of the Board of Supervisors.

*Dr. P. N. Williams*  
 April 6 31  
 3:26 P.  
 6 Maps  
 18

**RIDGELAND**  
 Re-Subdivision of Blocks 9 & 10  
 EL MONTEVIDEO ESTATES  
 Situate in the N.E. 1/4 of Sec. 9, T14S, R14E,  
 PIMA COUNTY, ARIZONA.  
 Scale of Plat - 1 inch = 80 feet.  
 Surveyed - June 1930 by *Paul E. Fernald*  
 Registered Engineer.

All corners, except original block corners, are marked by 1 inch capped pipe, 18 inches long, set 12 inches or more in the ground.

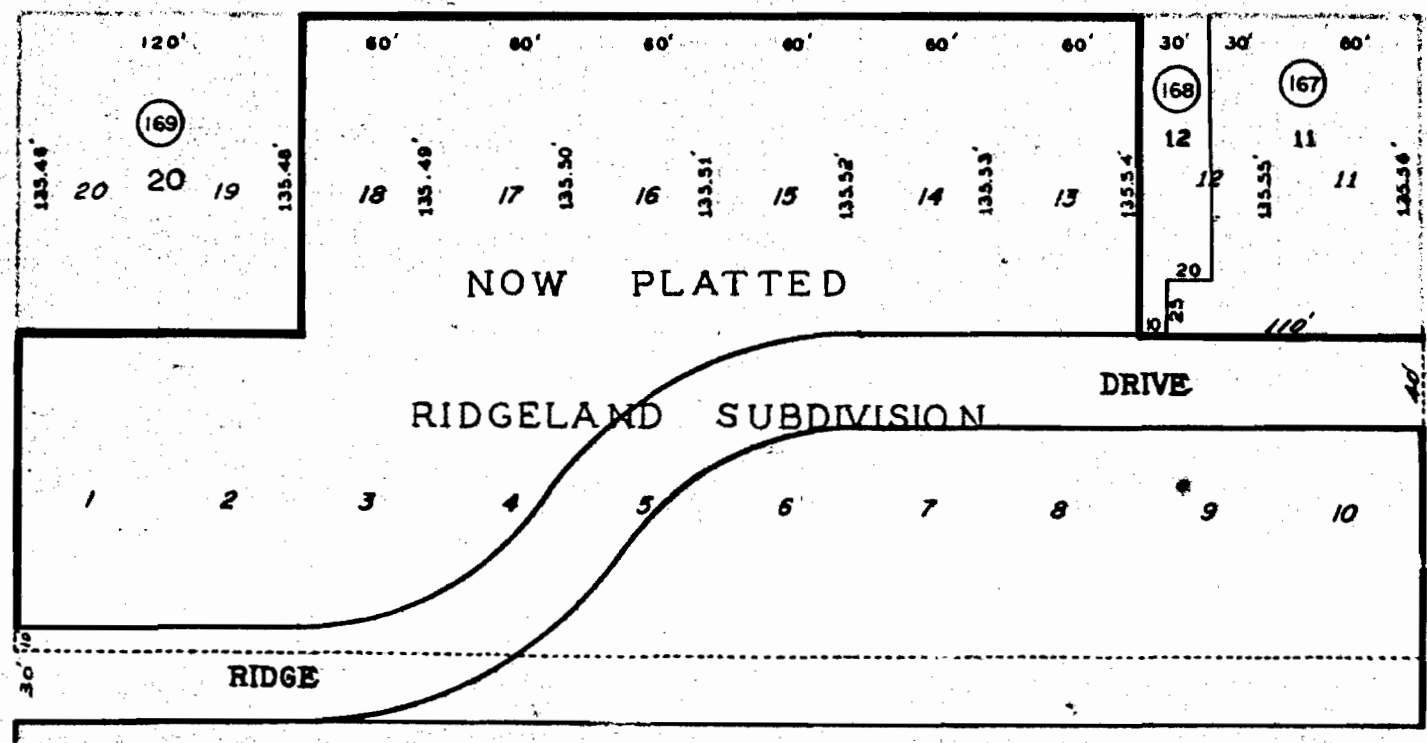
125-17-



### EL CAMINO DEL NORTE

CALLE FERNANDO

CALLE DE SOTO



SCALE - 1" = 60'

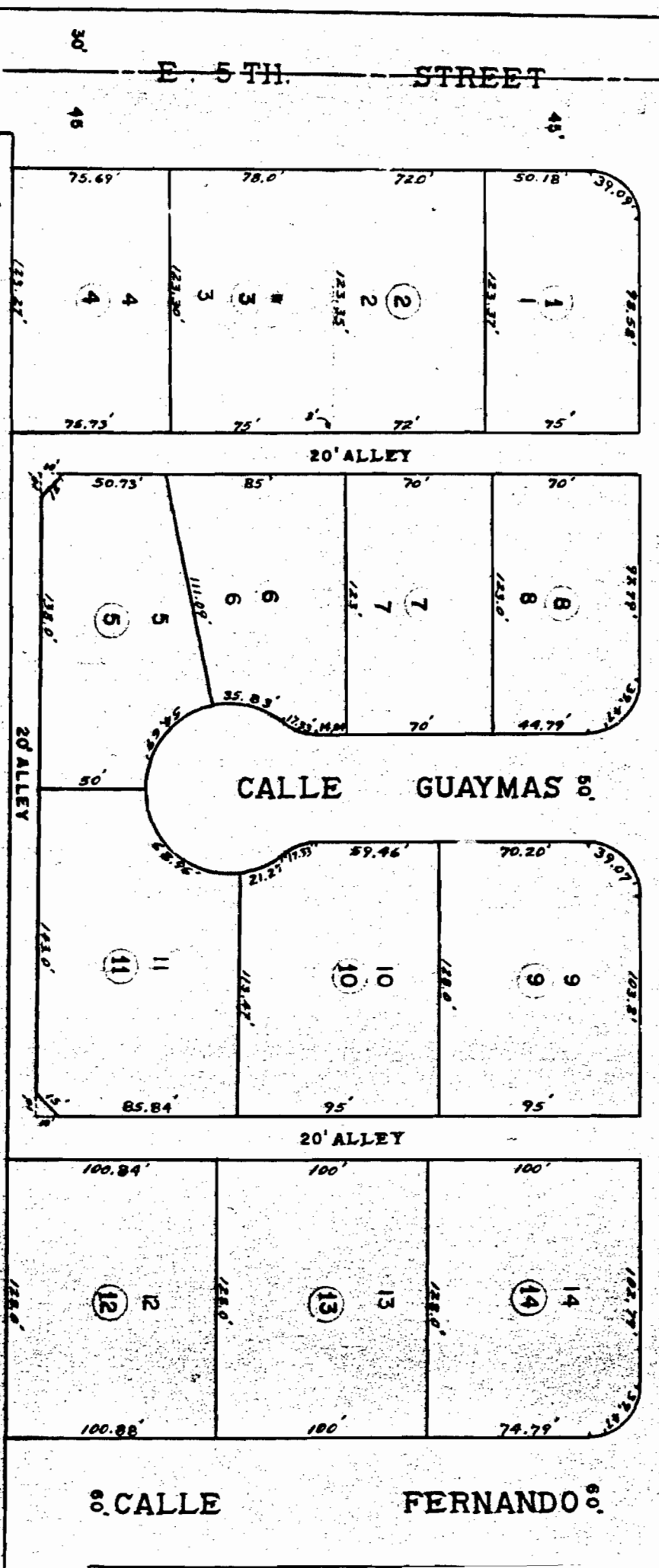
SEE BOOK 5, PAGE 75 M & P.

# RIDGE SUBDIVISION

EL MONTEVIDEO  
BLK. 6

ESTATES  
BLK. 7

EL CAMINO DEL NORTE



SEC. 9, T14S, R14E



SCALE - 1"=60'

SEE BOOK 11, PAGE 46 MAP

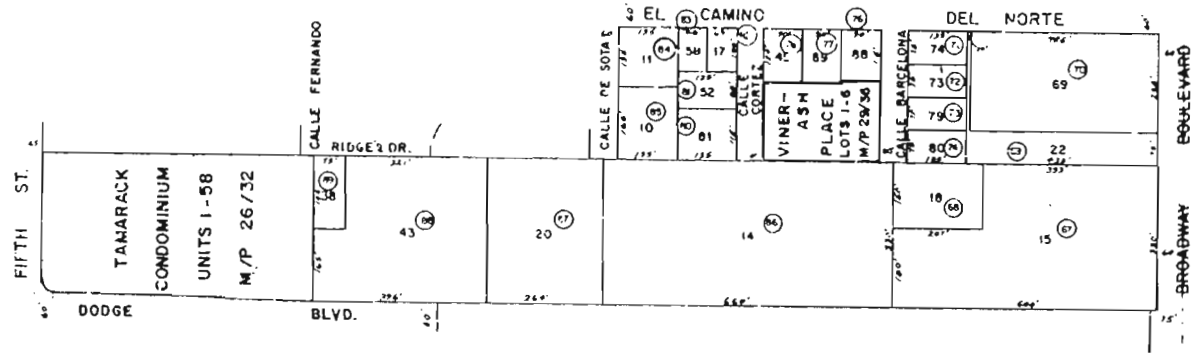
18 81

# ASSESSOR'S RECORD MAP

125-10  
3/5

## SECTION 9, TOWNSHIP 14 SOUTH, RANGE 14 EAST

### DETAIL 5

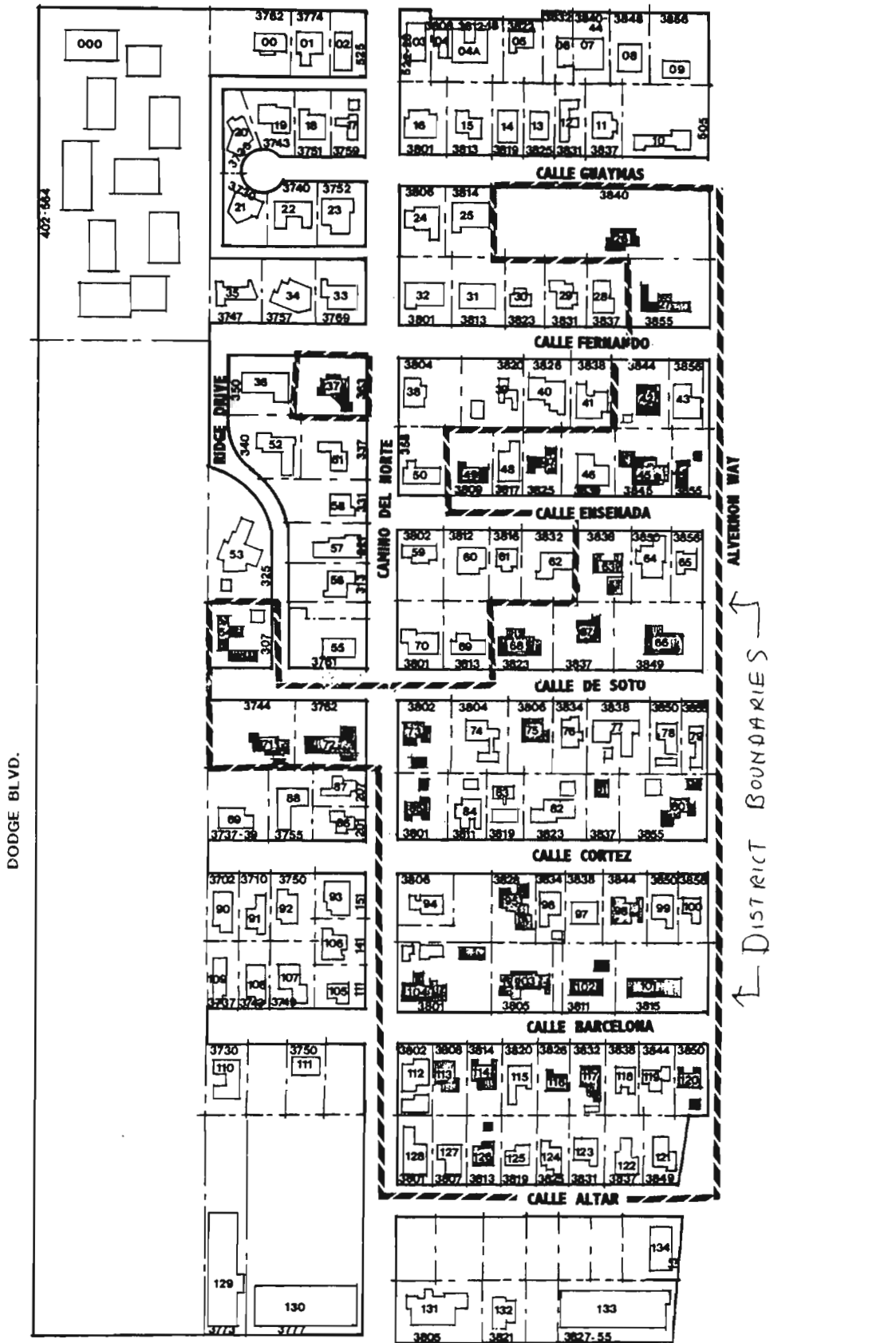


DETAIL NO. 5

SCALE-1"=200'  
1979



FIFTH STREET



DODGE BLVD.

402' 664

RIDGE DRIVE

CAMINO DEL NORTE

CALLE GRAYMAS

CALLE FERNANDO

CALLE ENSENADA

CALLE DE SOTO

CALLE CORTEZ

CALLE BARCELONA

CALLE ALTAR

ALVERNOR WAY

DISTRICT BOUNDARIES



BROADWAY BOULEVARD

EL MONTEVIDEO



 CONTRIBUTORS  
 NON-CONTRIBUTORS

DISTRICT BOUNDARIES 1995