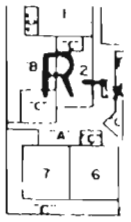
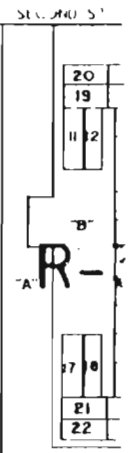


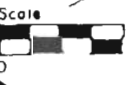
ALVERNON WAY



COMMENTS



COMM



Scale

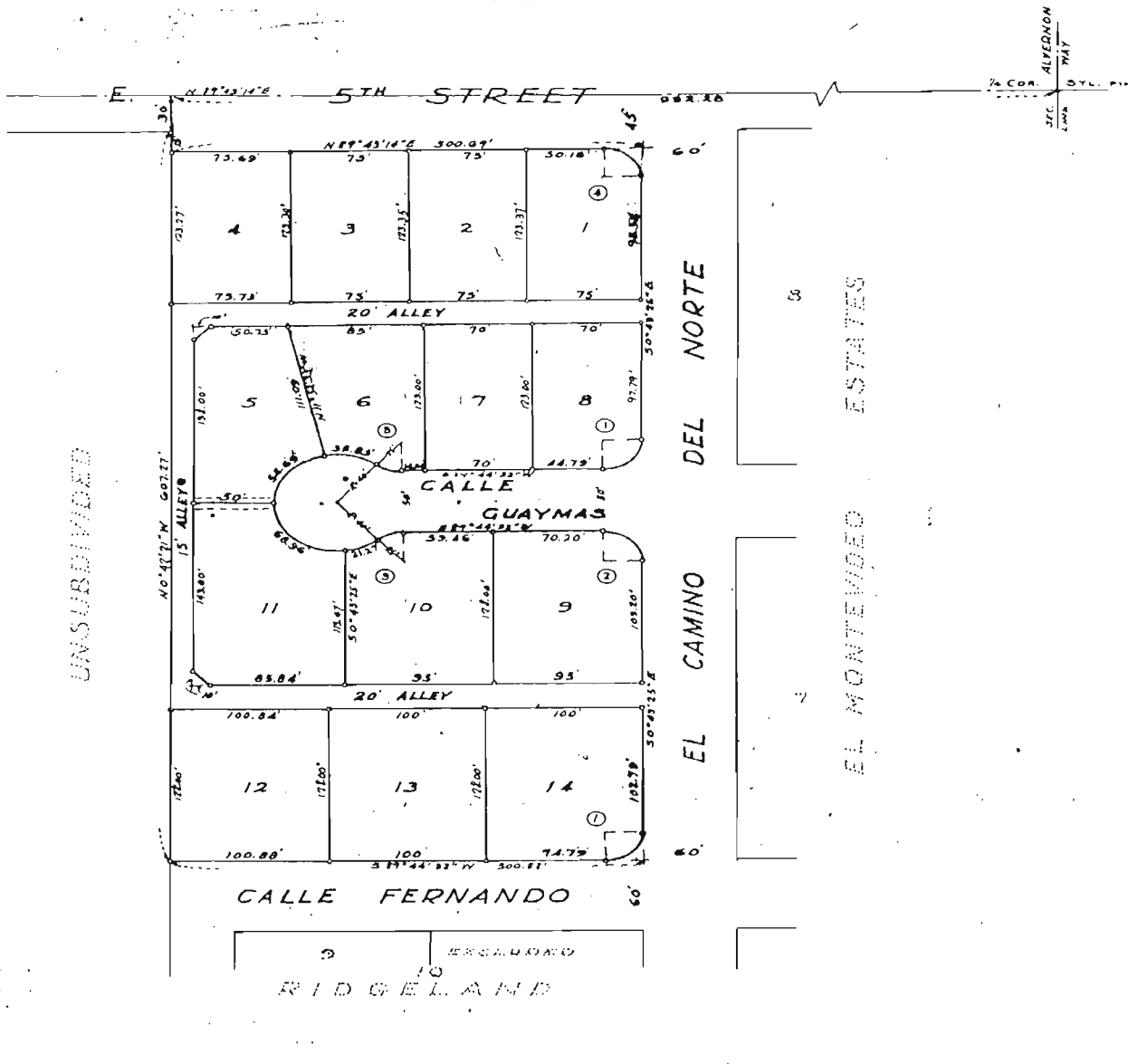
SE

BROADWAY

EL MONTEVIDEO

BOULEVARD

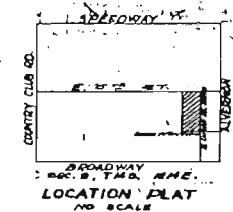
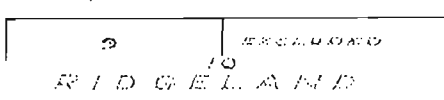
SUBDIVISIONS



UNSUBDIVIDED

EL CAMINO DEL NORTE

EL MONTEVIDEO ESTATES



APPROVALS

M. A. Richards
CHAIRMAN, PLANNING COMMISSION
DATE: July 23, 1955

W. J. Stiles
CITY ENGINEER
DATE: 9-2-55

I, Ivan R. Hawkins, hereby certify that this plat was approved by the Mayor and Council of the City of Tucson, State of Arizona on the 1st day of August, 1955.

Ivan R. Hawkins
Mayor, City of Tucson

Richard E. Kolt
COUNTY ENGINEER
DATE: 7-22-55

I, RICHARD E. KOLT, hereby certify that this plat was approved by the Board of Supervisors of Pima County, State of Arizona on the 1st day of August, 1955.

Richard E. Kolt
CLERK, BOARD OF SUPERVISORS
DATE: 7-22-55

DEDICATION

We, the undersigned, hereby certify that we are the sole owners of Block B and Block C of El Montevideo Estates according to the Map or Plat of record in the Office of the County Recorder, Pima County, Arizona in Book B Maps and Plats Page 18 thereof and we have caused the same to be re-platted in the manner here shown, and furthermore we do hereby dedicate to public use, for street, alley and utility easement as shown in plat, together with all appurtenant overhead easement on each side of said alleys for wires and cross-arms on power & pole lines.

J. A. Basso - *Alfred Basso*

STATE OF ARIZONA
COUNTY OF PIMA

This instrument was acknowledged before me this 18th day of July, 1955, by J. A. Basso and Alfred Basso.

Richard G. Coffey
NOTARY PUBLIC

My Commission Expires Sept. 15, 1957.

RECORD DATA

52487
F&C # 522

STATE OF ARIZONA
COUNTY OF PIMA

Filed for record of the Recorder of County of Pima on the 28th day of July, 1955 at 3:15 P.M. in Book 11 of Maps and Plats Page 46 thereof.

Anna Sullinger
COUNTY RECORDER
DEPUTY

GENERAL NOTES

- 1/2" OPEN PIPES
- Ⓢ CURVE NO. (DATA IN TABLE)
- UTILITY EASEMENT 5' FROM LOT LINE

CURVE DATA

NO.	A	R	B.T.	L.C.
1	70° 27' 57"	25.00'	25.21'	39.47'
2	89° 32' 05"	25.00'	24.80'	39.07'
3	39° 42' 47"	25.00'	8.54'	17.33'
4	37° 33' 21"	25.00'	24.82'	39.09'

MORTGAGE CLAUSE

We the undersigned, hereby certify that we are the holders and owners of Mortgage encumbering the land resubdivided in the manner shown on this map and we do hereby join in and consent to the dedication to the public of the street, alleys and utility easement as hereinabove designated and shown.

Richard G. Coffey
NOTARY PUBLIC

STATE OF ARIZONA
COUNTY OF PIMA

This instrument was acknowledged before me this 18th day of July, 1955, by *J. A. Basso and Alfred Basso*.

My Commission expires DEC. 15, 1959



CERTIFICATION OF SURVEY

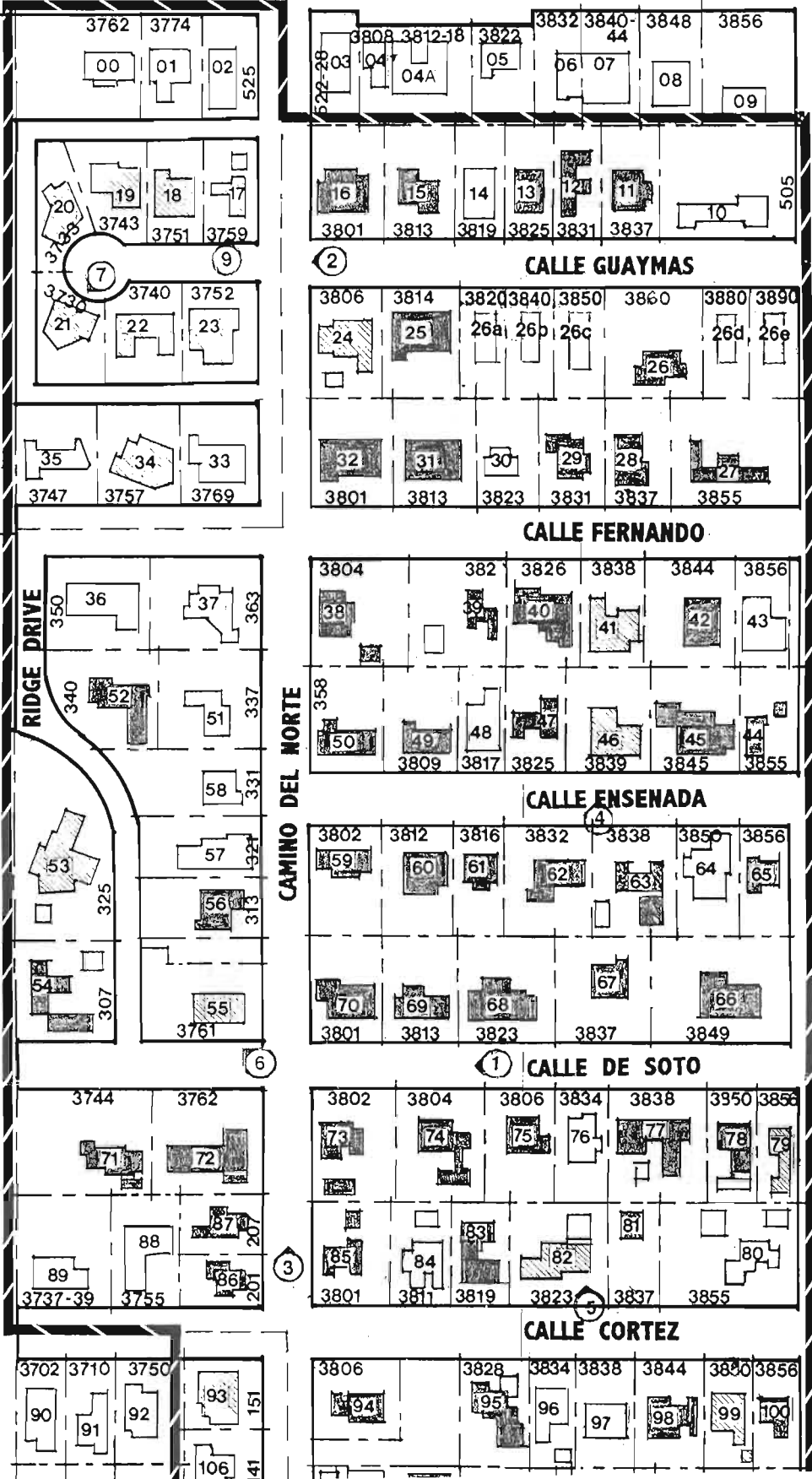
I HEREBY CERTIFY I COMPLETED THE SURVEY OF PROPERTY SHOWN BY THIS PLAT, JULY 1955.

Wm. H. Wheeler
REGISTERED CIVIL ENGINEER

RIDGE SUBDIVISION
BEING A RESUBDIVISION OF BLOCK B AND C AND AN EXCLUDED PARCEL OF RIDGELAND A; RESUBDIVISION OF BLOCKS B & C OF EL MONTEVIDEO ESTATES SITUATED IN THE SW 1/4 OF SEC 11 & T14S, R14E, PIMA COUNTY, ARIZONA. SCALE: 1" = 60'

FIFTH STREET

402-564



3762 3774
00 01 02
525

20 19 18 17
3743 3751 3759
7 9

21 22 23
3740 3752

35 34 33
3747 3757 3769

350 36
37 363
340 52
51 337

58 331
53 57 52
325 313

54 55
307 3761

3744 3762
71 72
88 87 80
89 86 80
3737-39 3755

3702 3710 3750
90 91 92 93 151
106 141

3808 3812-18 3822 3832 3840-44 3848 3856
03 04 04A 05 06 07 08 09

16 15 14 13 12 11 10
3801 3813 3819 3825 3831 3837

3806 3814 3820 3840 3850 3860 3880 3890
24 25 26a 26b 26c 26d 26e

32 31 30 29 28 27
3801 3813 3823 3831 3837 3855

3804 382 3826 3838 3844 3856
38 39 40 41 42 43

358 3809 3817 3825 3839 3845 3855
50 49 48 47 46 45 44

3802 3812 3816 3832 3838 3850 3856
59 60 61 62 63 64 65

70 69 68 67 66
3801 3813 3823 3837 3849

3802 3804 3806 3834 3838 3950 3856
73 74 75 76 77 78 79
85 84 83 82 81 80

3806 3828 3834 3838 3844 3850 3856
94 95 96 97 98 99 100

CAMINO DEL NORTE

ALVERNON WAY

CALLE GUAYMAS

CALLE FERNANDO

CALLE ENSENADA

CALLE DE SOTO

CALLE CORTEZ

RIDGE DRIVE

3

1

5

6

2

505

7

9

3

3

3

3

3

3

3

3

3

3

3

3

3

3

3

3

3

3

3

3

3

3

3

3

3

3

3

3

3

3

3

3

3

3