

# 22<sup>nd</sup> Street Bridge Improvement Project



CITY OF  
**TUCSON**  
TRANSPORTATION & MOBILITY



# Project Description

- History
- Safety
- Connectivity
- Segmental Bridge Construction



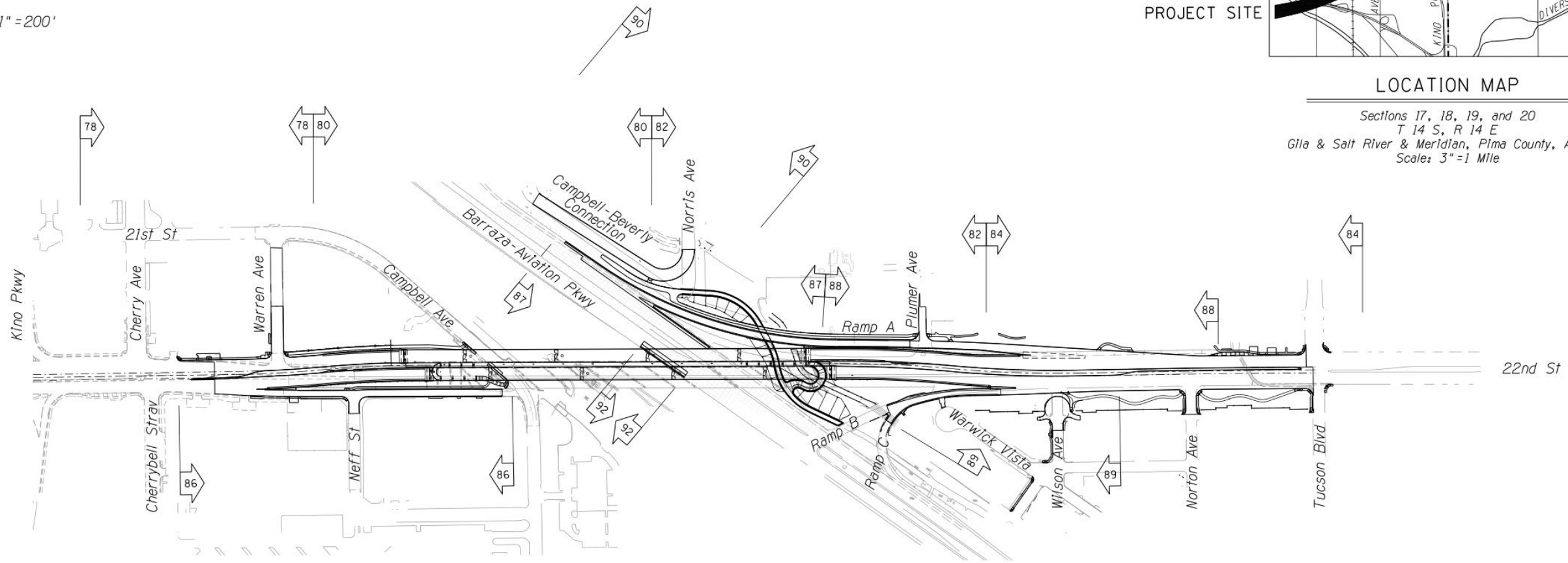
Scale: 1" = 200'



PROJECT SITE

### LOCATION MAP

Sections 17, 18, 19, and 20  
T 14 S, R 14 E  
Gila & Salt River & Meridian, Pima County, Arizona  
Scale: 3" = 1 Mile



TRANSPORTATION  
AECOM USA  
333 E. WETMORE  
Tucson, Arizona  
T 520.887.1800



### DEPARTMENT OF TRANSPORTATION/ENGINEERING

### 22ND STREET KINO PARKWAY TO TUCSON BOULEVARD

Preliminary 100% Review  Not for Construction or Recording	Approvals	Signatory	Date	App
	ENGINEERING ADMINISTRATOR			
	TRAFFIC PLANNING & DESIGN ADMINISTRATOR			
LANDSCAPE ARCHITECT				

CITY AV

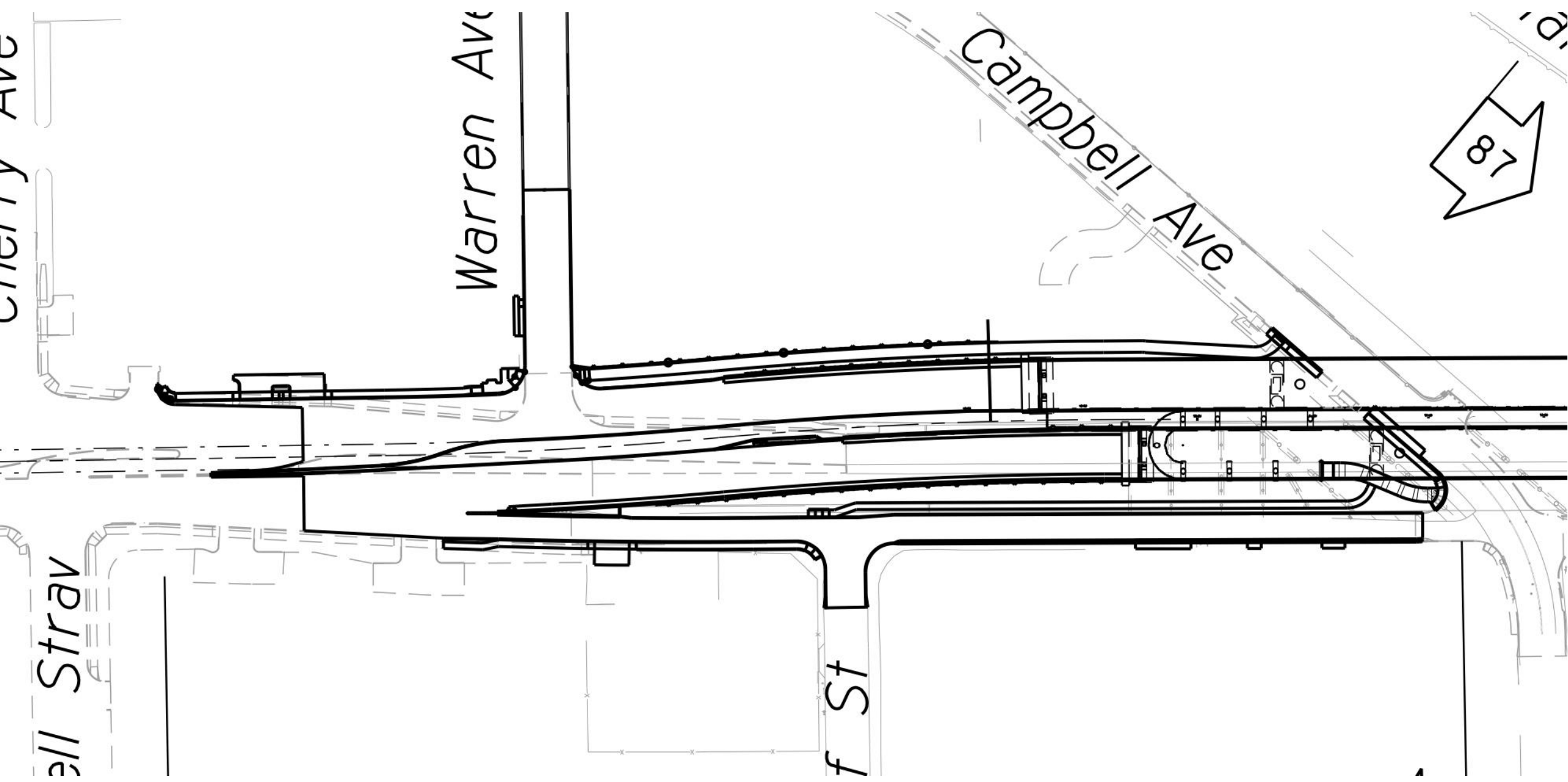
ell Strav

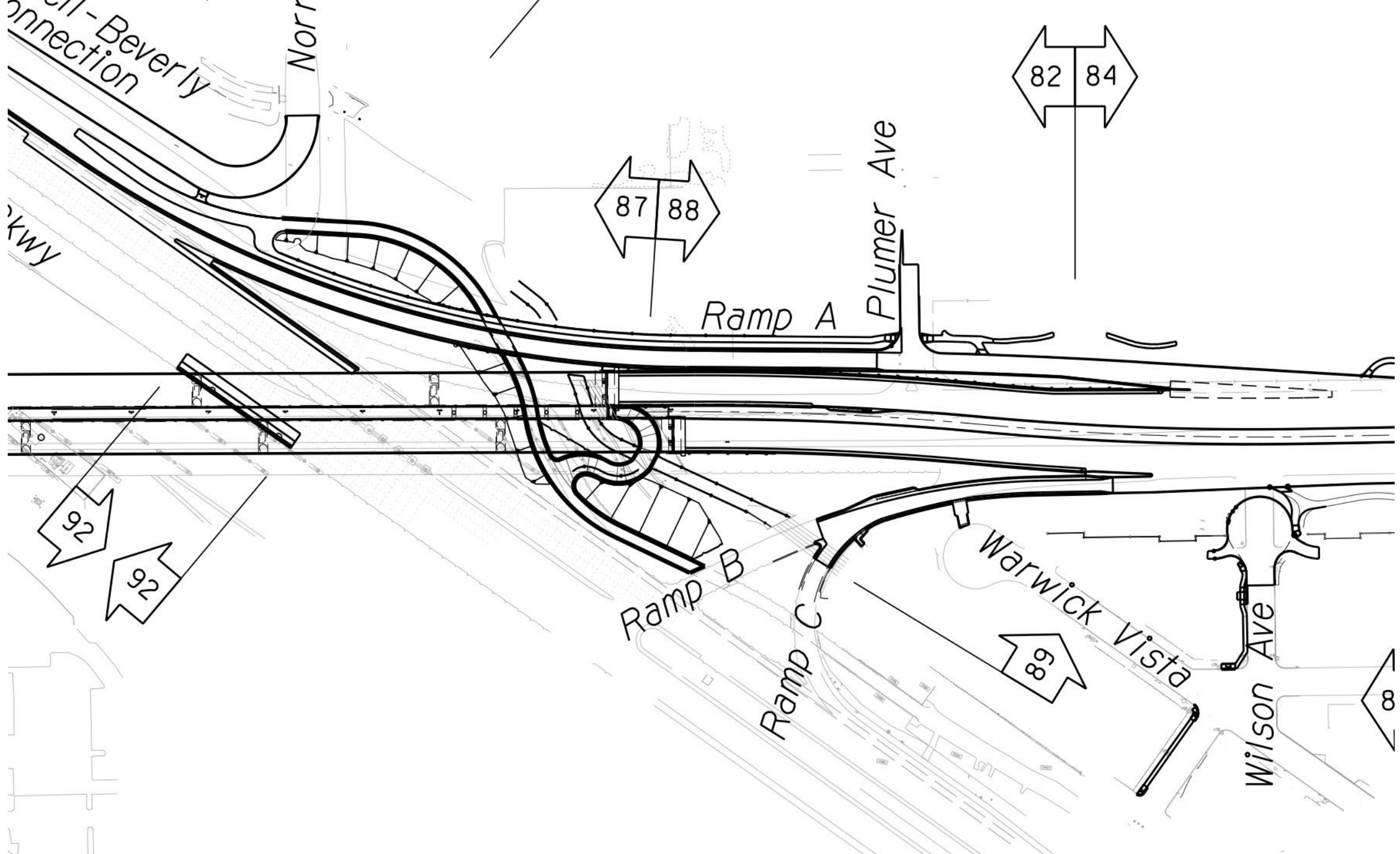
Warren Ave

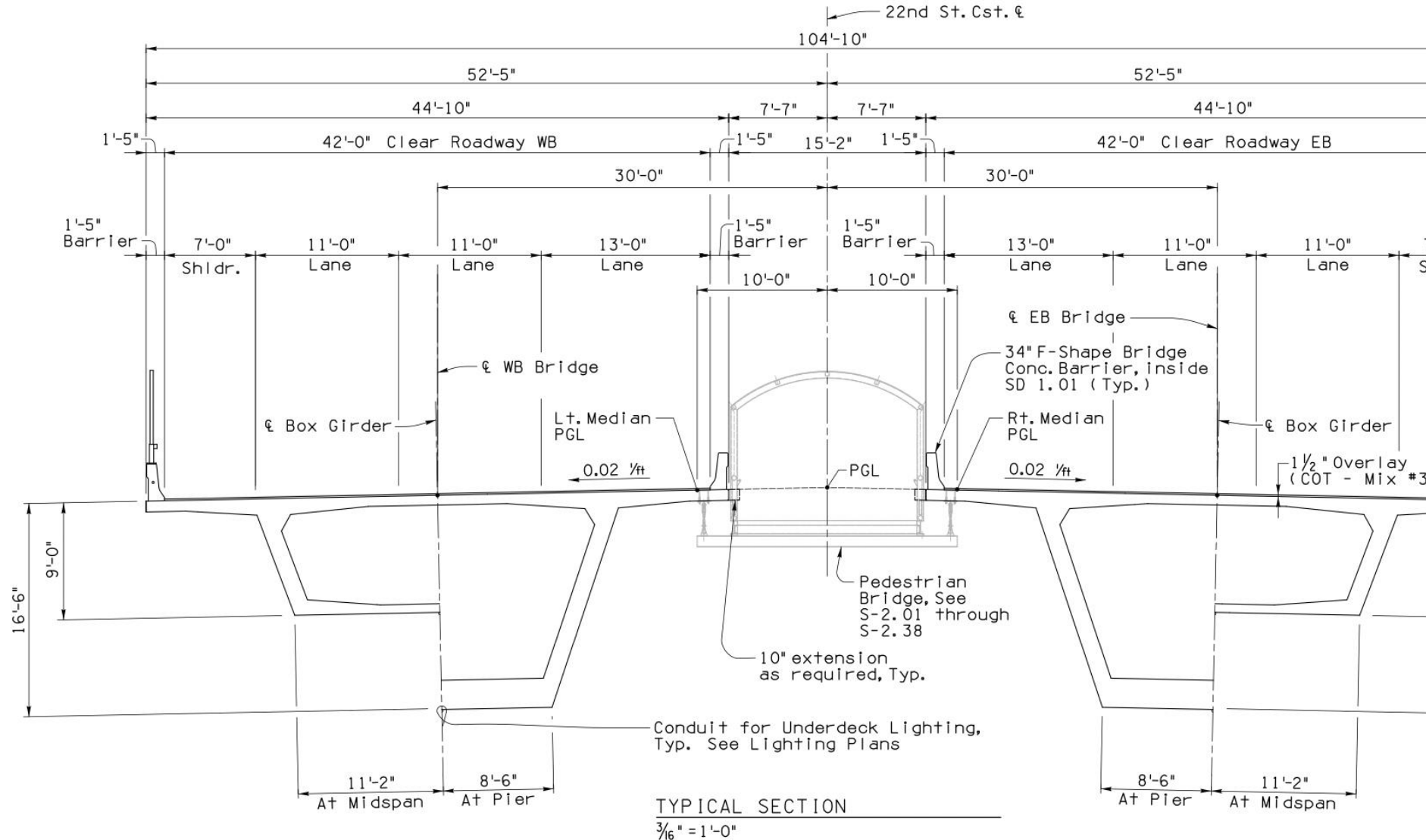
f St

Campbell Ave

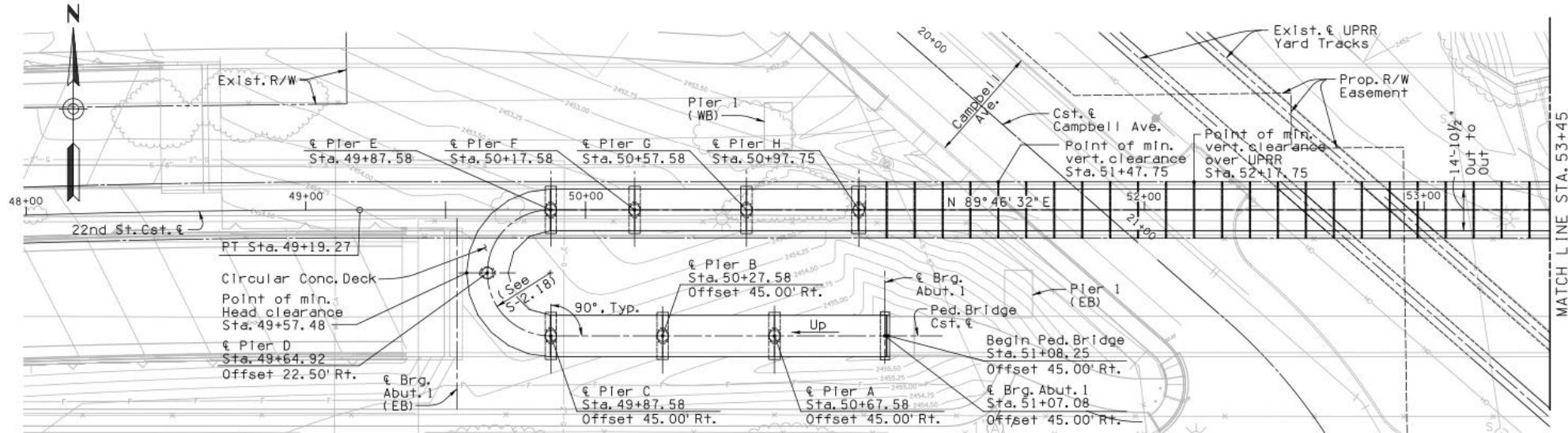
87



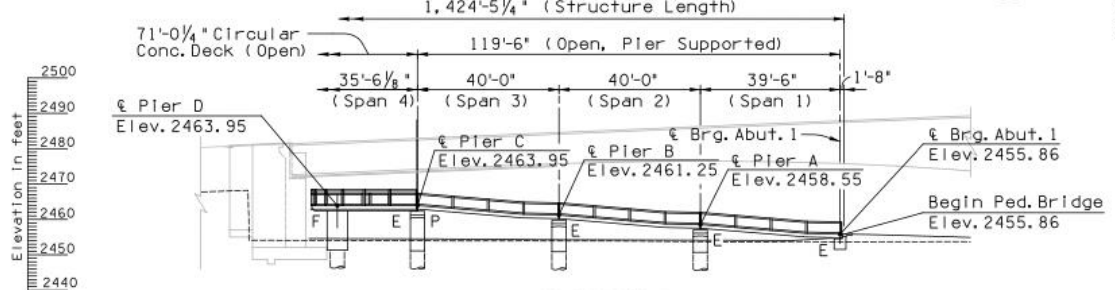
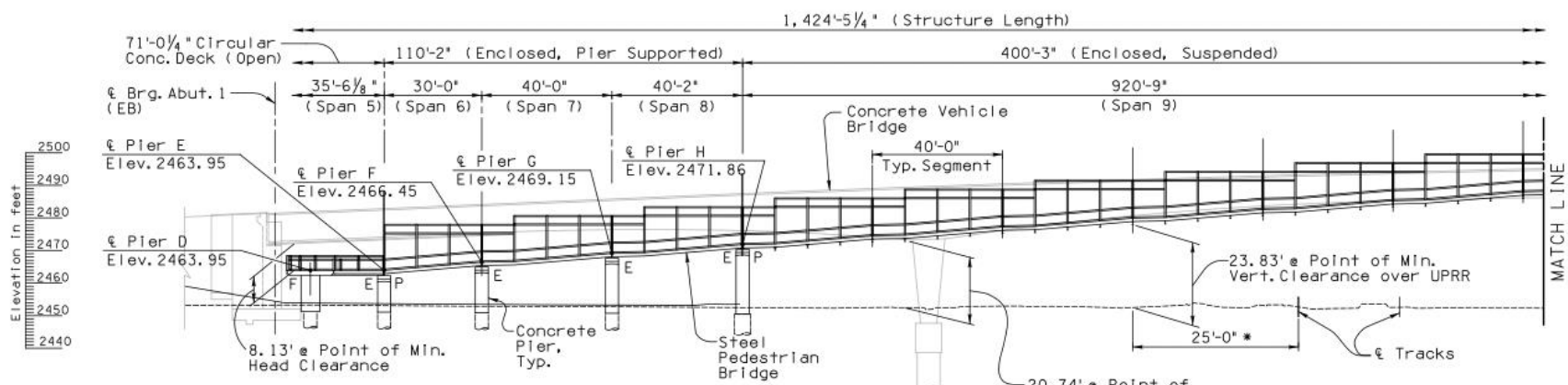








PLAN  
1"=20'  
New 14-Span Steel Pedestrian Bridge



ELEVATION  
1"=20'

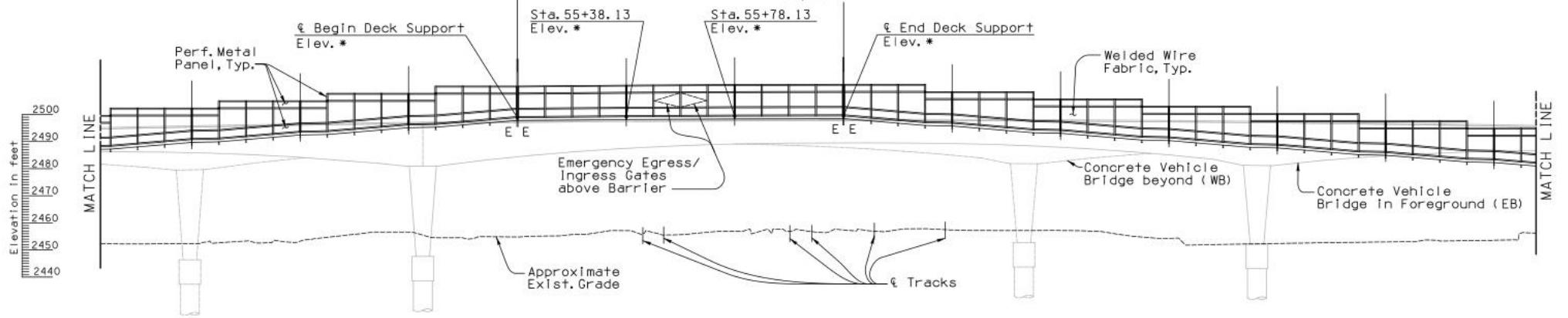
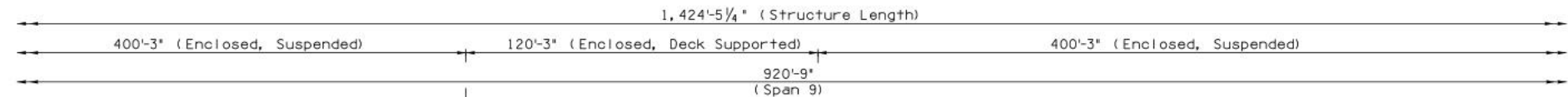
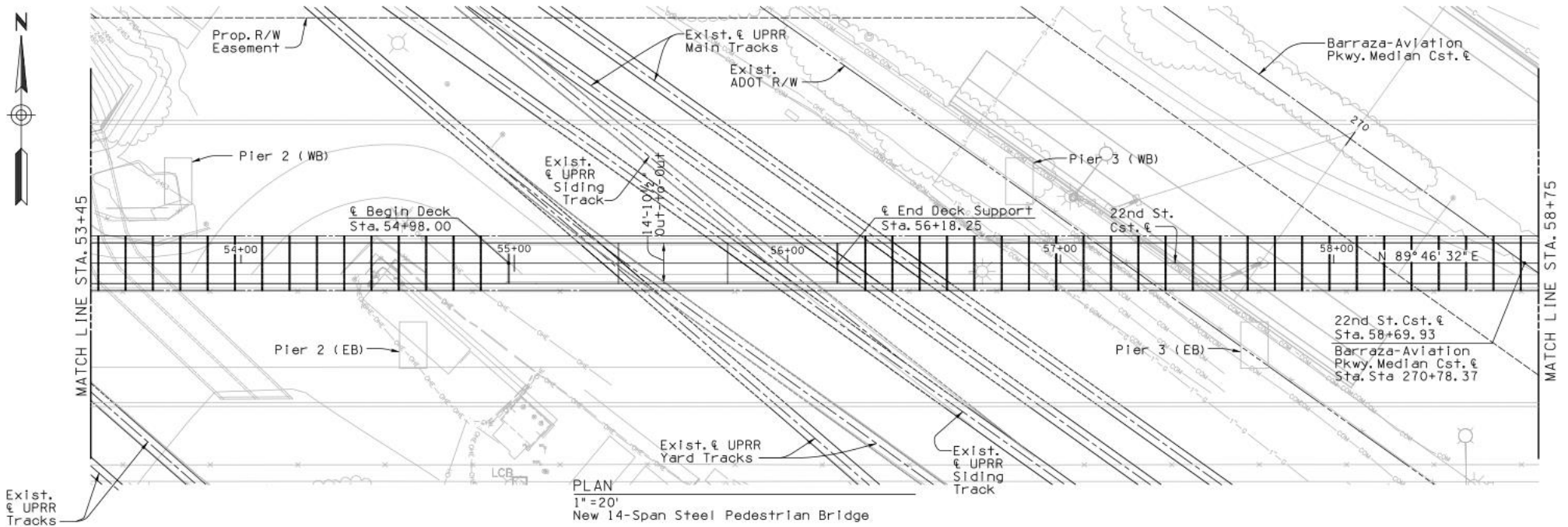
- Notes:
1. See Sheet S-1.13 for track alignment and spacing.
  2. Elevations are at top of concrete deck at Ped. Bridge Cst. &.

Plan & Elevation - 1 of 3 S-2.02 of S-2.38

Preliminary  
100%  
Review  
Not for  
Construction  
or Recording  
June 2018

DEPARTMENT OF TRANSPORTATION/ENGINEERING DIVISION		301
22ND STREET KINO PARKWAY TO TUCSON BOULEVARD		OF
PEDESTRIAN BRIDGE		474
CITY OF TUCSON	DRWN. BY JHS, WJA	06-18
	DESIGN. BY LS	06-18
SCALE: N/A		PLAN NO. I-2010-012





\* See S-1.67, Transverse Tendon & Ped. Bridge Bearing R Details

Note:  
See Sheet S-1.13 for track alignment and spacing.

Plan & Elevation - 2 of 3 S-2.03 of S-2.38



DEPARTMENT OF TRANSPORTATION/ENGINEERING DIVISION  
22ND STREET KINO PARKWAY TO TUCSON BOULEVARD  
PEDESTRIAN BRIDGE

302  
of  
474

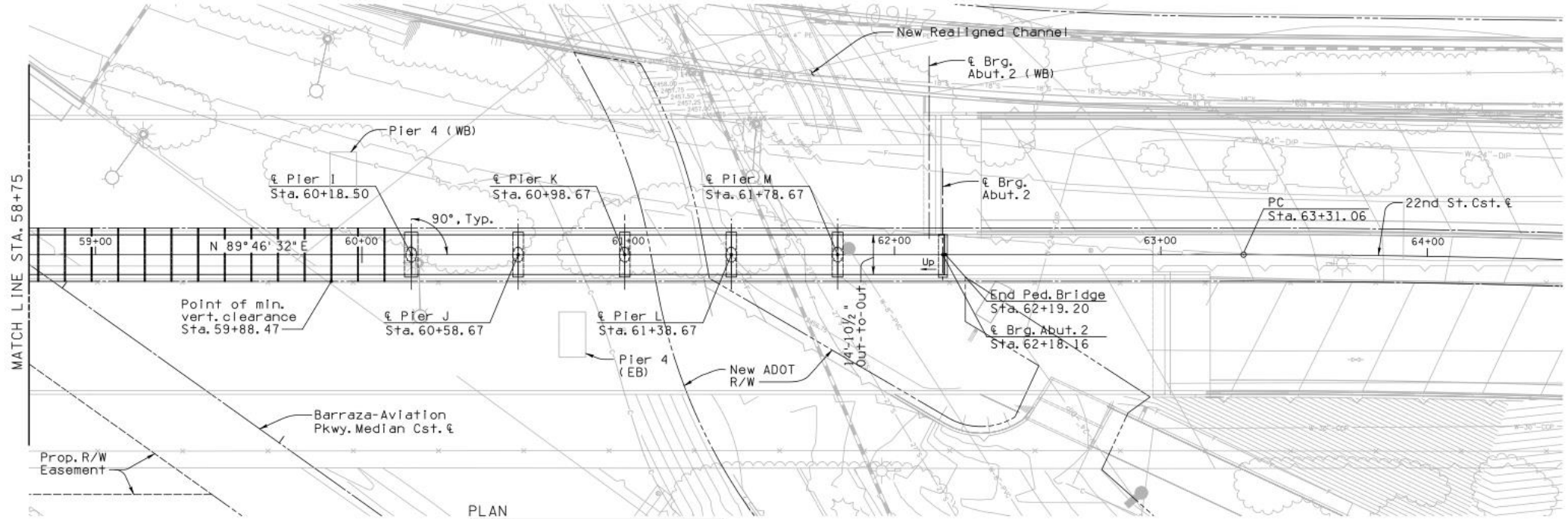
Preliminary  
100%  
Review  
Not for  
Construction  
or Recording  
June 2018

CITY OF TUCSON	DRWN. BY JMS, WJA	06-18	REF.	SCALE: N/A
	DSGN. BY LS	06-18		
	CHGD. BY COP	06-18	PLAN NO.	1-2010-012

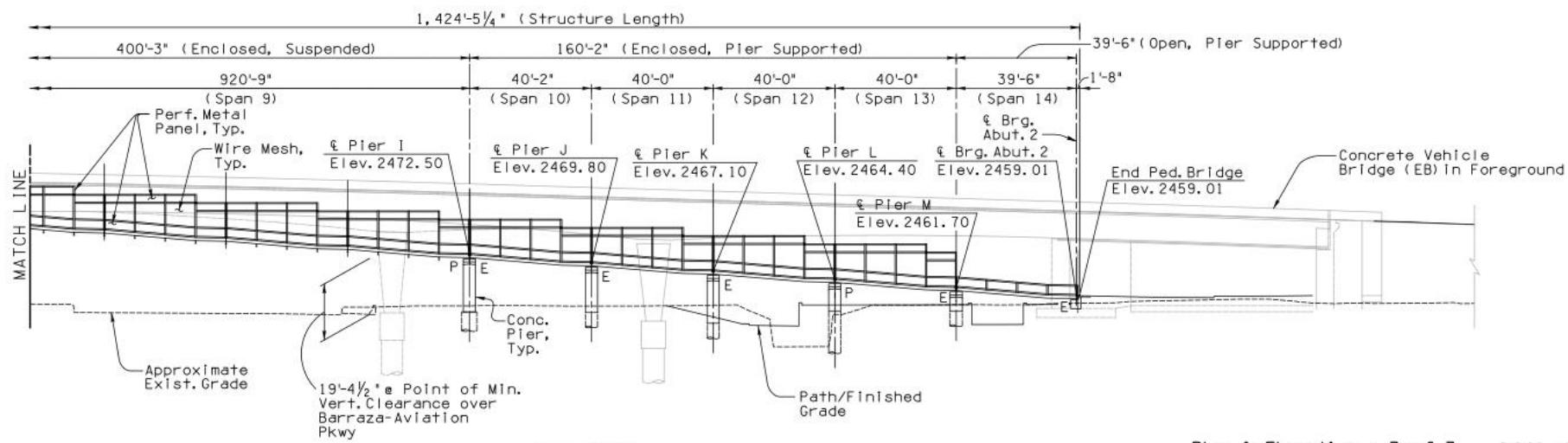
NO.	DATE	REVISION	BY	CHKD	APPR







PLAN  
1"=20'  
New 14-Span Steel Pedestrian Bridge



ELEVATION  
1"=20'

Plan & Elevation - 3 of 3 S-2.04 of S-2.38



Preliminary  
100%  
Review

Not for  
Construction  
or Recording

June 2018

DEPARTMENT OF TRANSPORTATION/ENGINEERING DIVISION  
22ND STREET KINO PARKWAY TO TUCSON BOULEVARD  
PEDESTRIAN BRIDGE

303  
of  
474



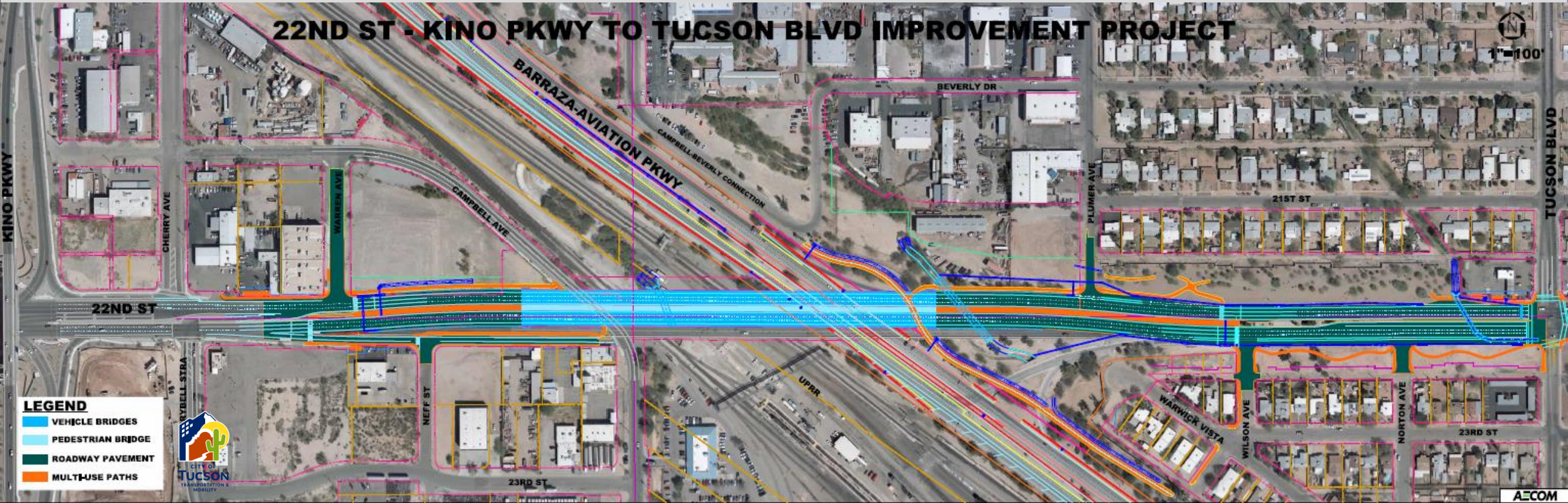
DRWN. BY JMS, M.A.	06-18	REF.	SCALE: N/A
DSGN. BY LS	06-18		
CHKD. BY COP	06-18	PLAN NO.	1-2010-012



NO.	DATE	REVISION	BY	CHKD.	APPR.



# 22ND ST - KINO PKWY TO TUCSON BLVD IMPROVEMENT PROJECT



- LEGEND**
- VEHICLE BRIDGES
  - PEDESTRIAN BRIDGE
  - ROADWAY PAVEMENT
  - MULTI-USE PATHS





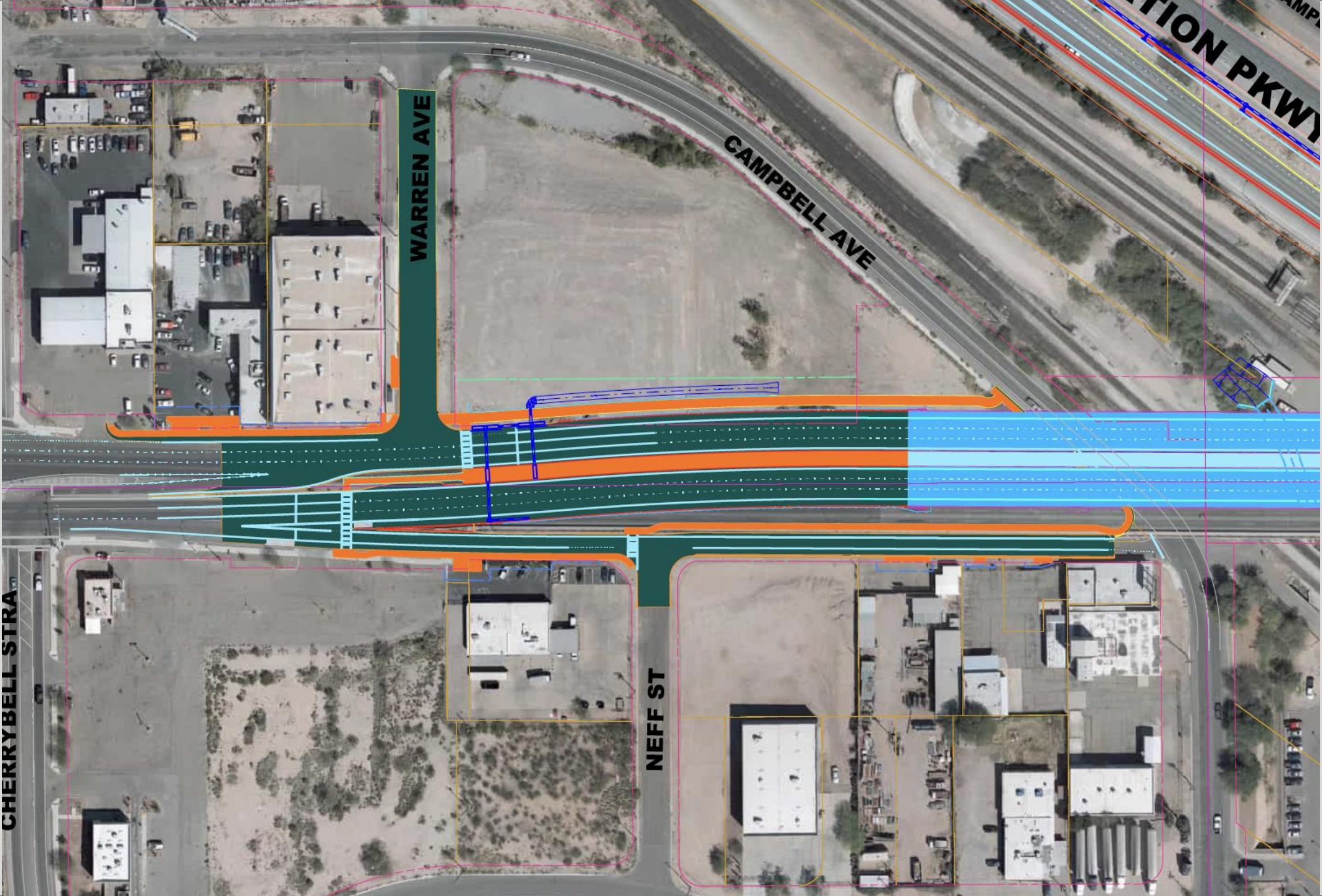
**CHERRYBELL STRA**

**WARREN AVE**

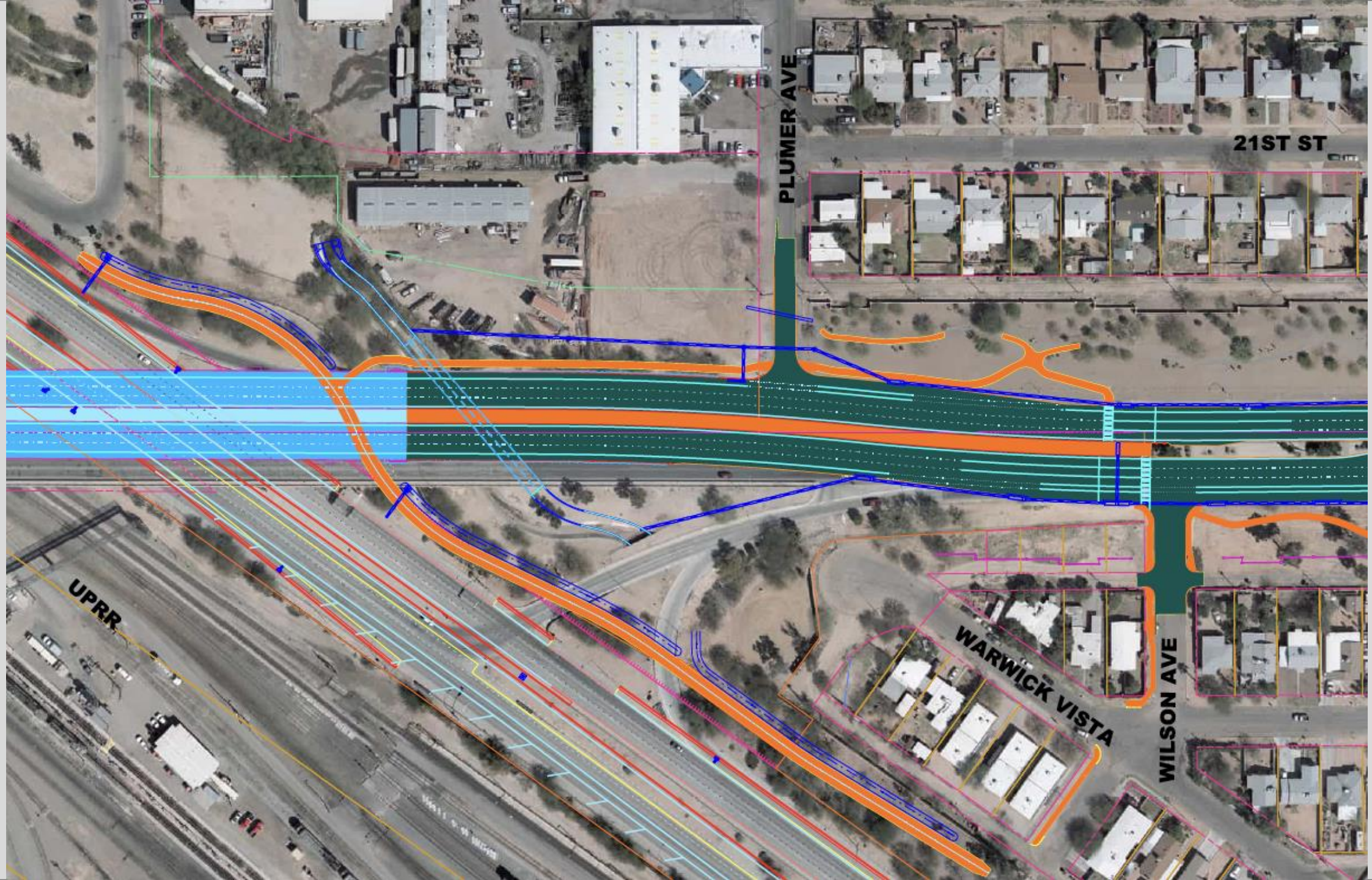
**CAMPBELL AVE**

**ATION PKWY**

**NEFF ST**







21ST ST

PLUMER AVE

WARWICK VISTA

WILSON AVE

UPRR











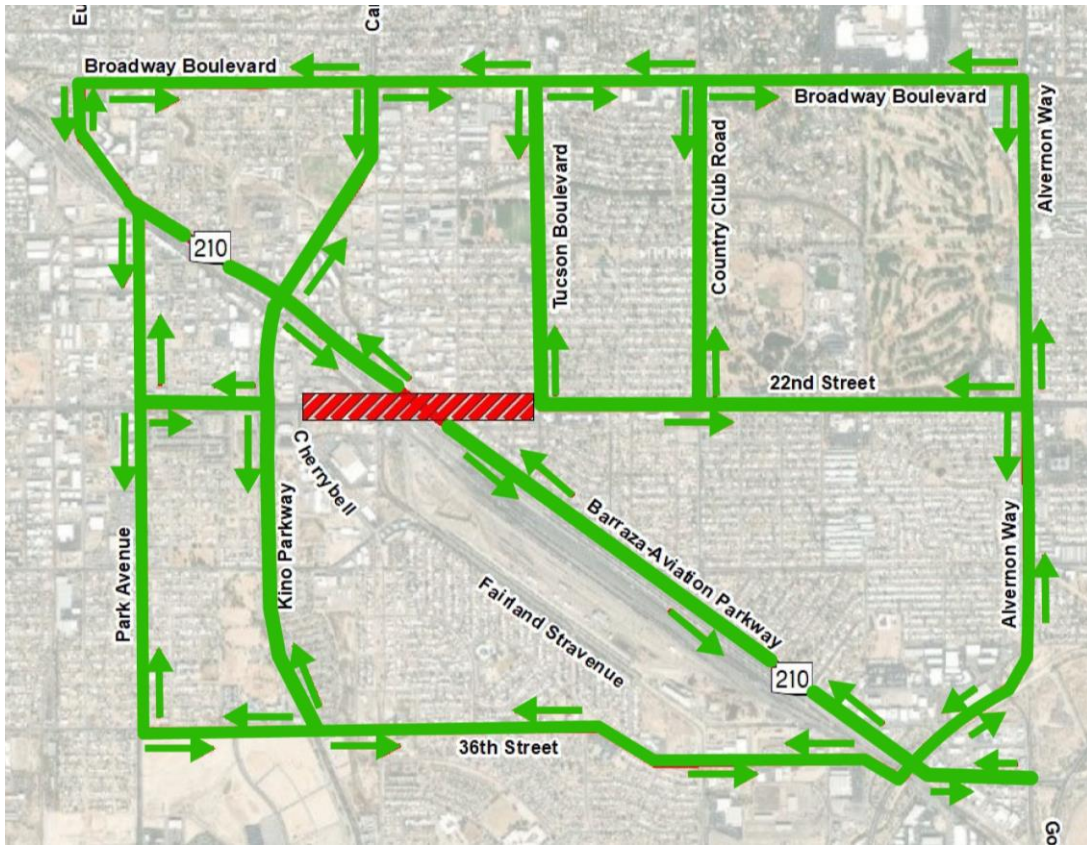















 Road and Bridge Closure

 Possible Detour Routes

 Direction of Travel

North



0  1 Mile

# Detour Maps





# Questions

---