



STONE AVENUE

6TH AVENUE

14TH STREET

15TH STREET

REDUCED NEW CONSTRUCTION ALONG ARIZONA AVE TO 2 STORIES

MOVED 14TH STREET PARKING TO 375 SOUTH STONE

ADDED UNDERGROUND PARKING AT 375 S STONE

ADDED RESIDENTIAL UNITS TO EXISTING ALL SAINTS SCHOOL

RECONFIGURED NEW CONSTRUCTION AT 435 S 6TH AVENUE

182	188	HOUSING UNITS
1	1	RESTAURANT
1	1	EVENT SPACE
120	137	MOTOR VEHICLE PARKING

■	NEW CONSTRUCTION
■	RESTORATION
■	EXISTING/COMPLETED



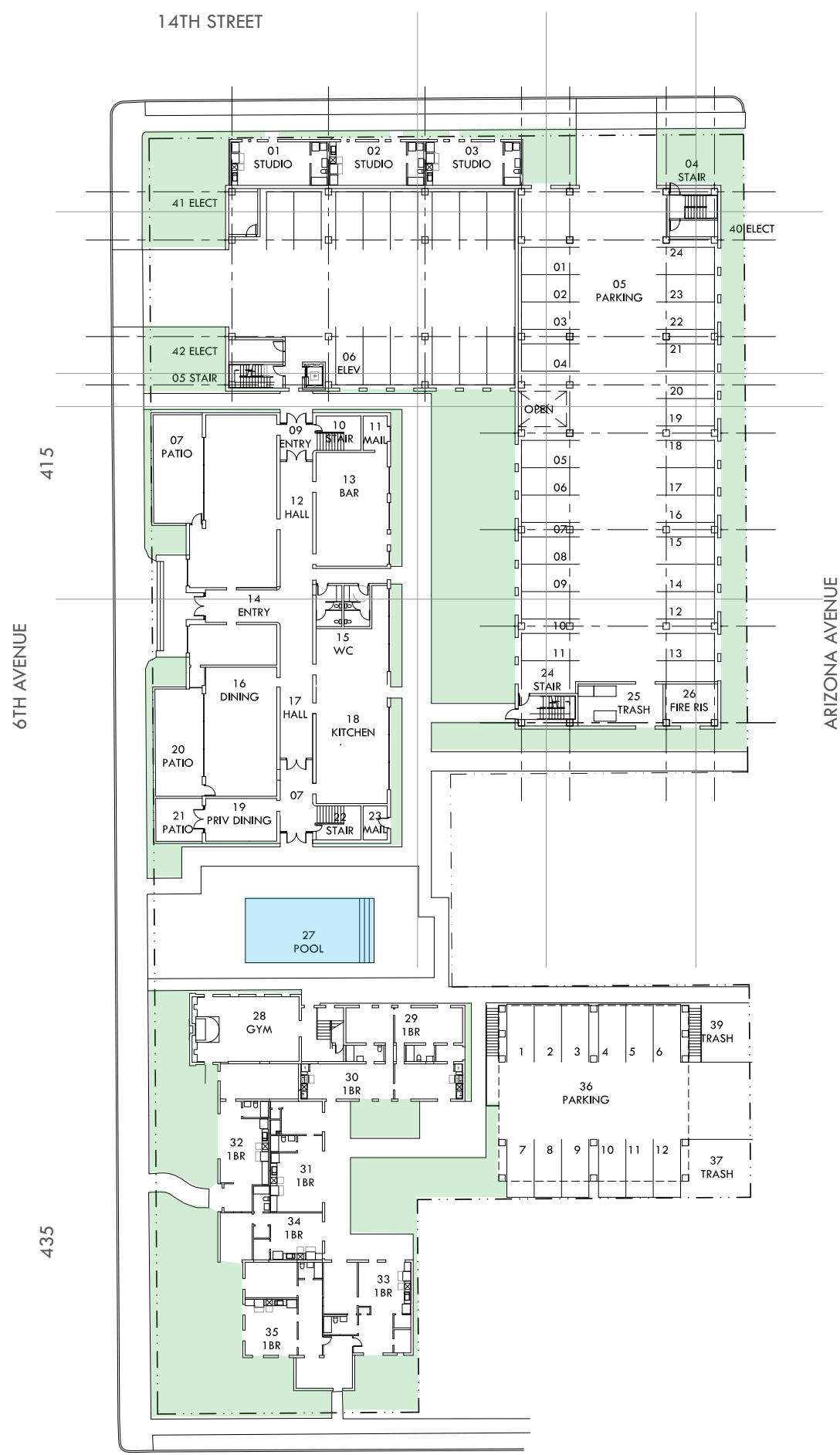
WORKER, INC.
 WORKER ARCHITECTURE PLLC
 workerincorporated.com
 520-664-4847
 BILL MACKEY



ALL SAINTS
 375 S STONE 40 E 14TH 408-435 S 6TH
 COURTESY REVIEWS

PROJECT SCOPE

GO1



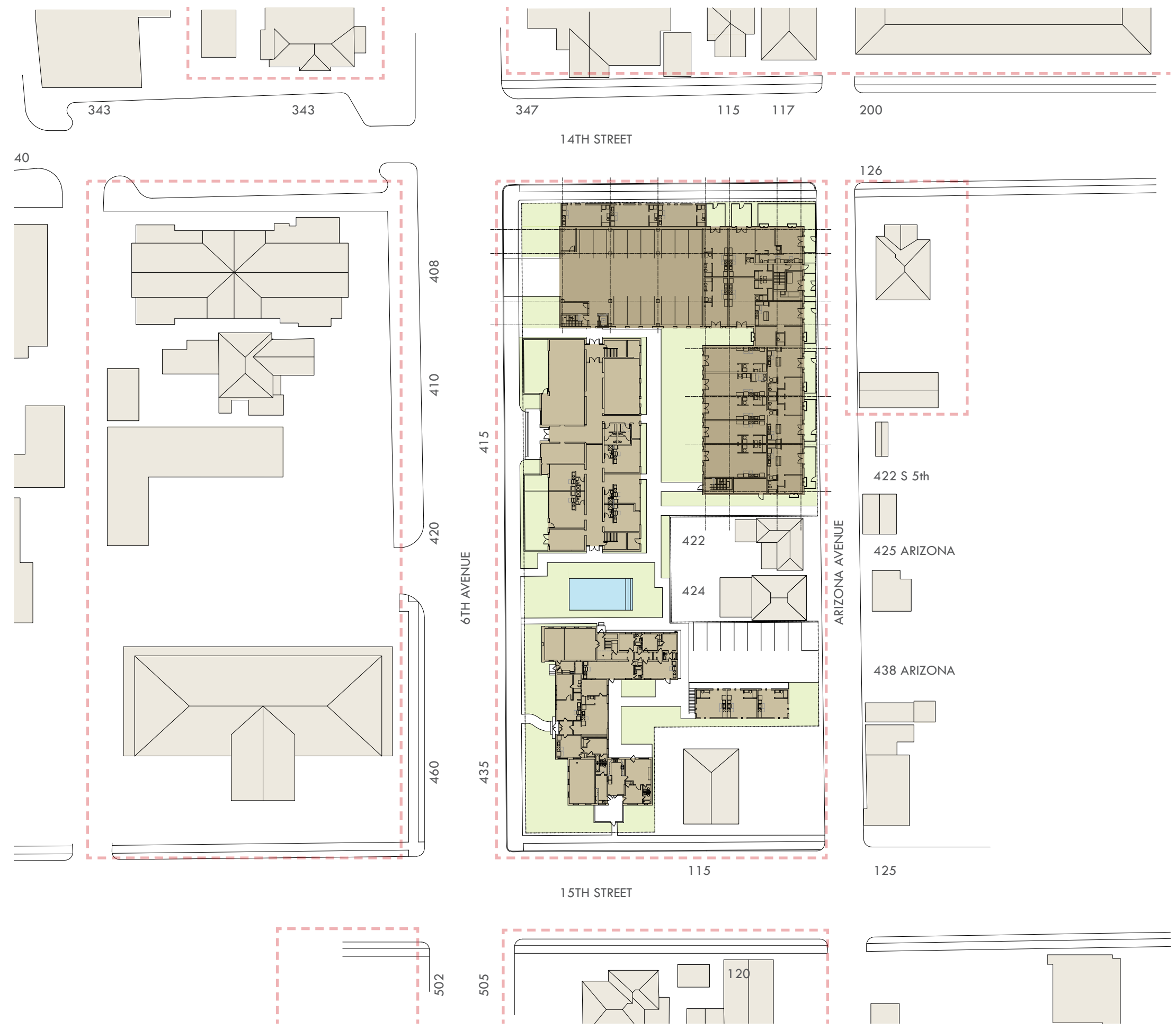
WORKER, INC.
 WORKER ARCHITECTURE PLLC
 workerincorporated.com
 520-664-4847
 BILL MACKEY



GO2
ALL SAINTS
 375 S STONE 40 E 14TH 408-435 S 6TH
 COURTESY REVIEWS
 SITE PLAN - PREVIOUS

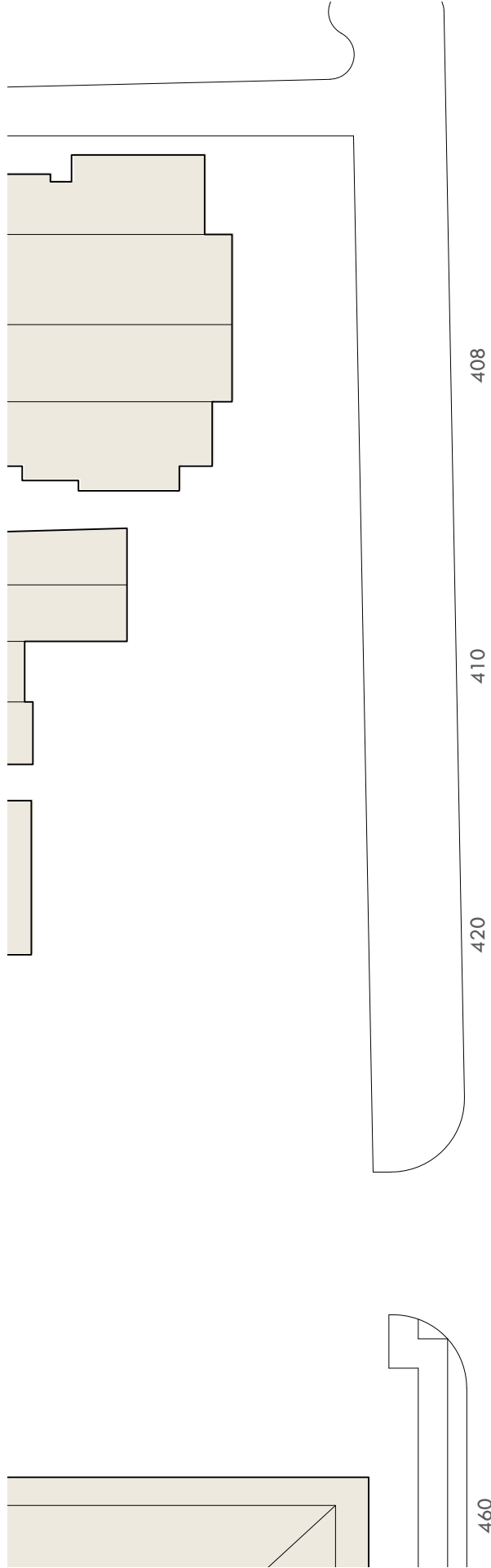


WORKER, INC.
WORKER ARCHITECTURE PLLC
workerincorporated.com
520-664-4847
BILL MACKEY

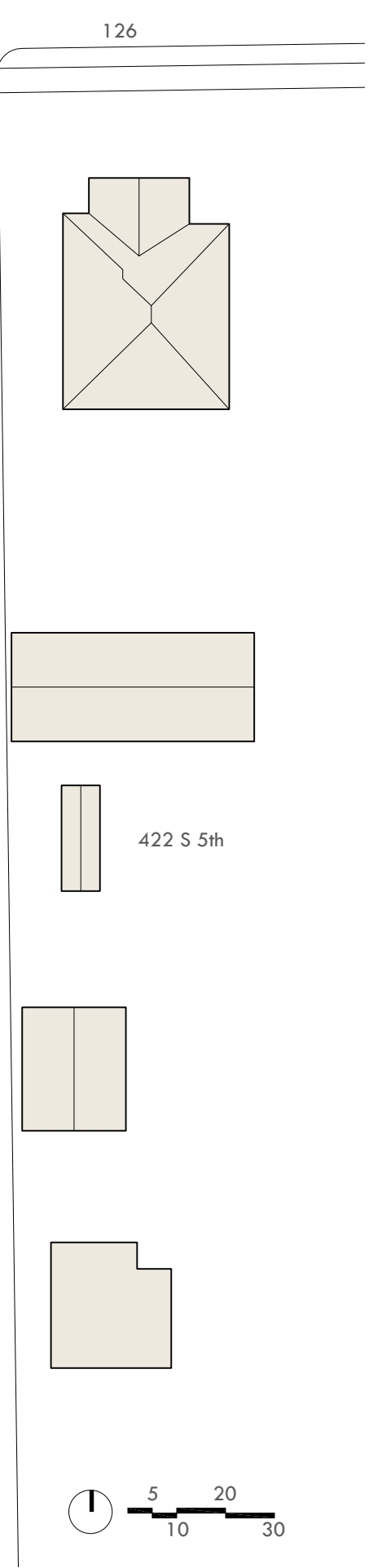
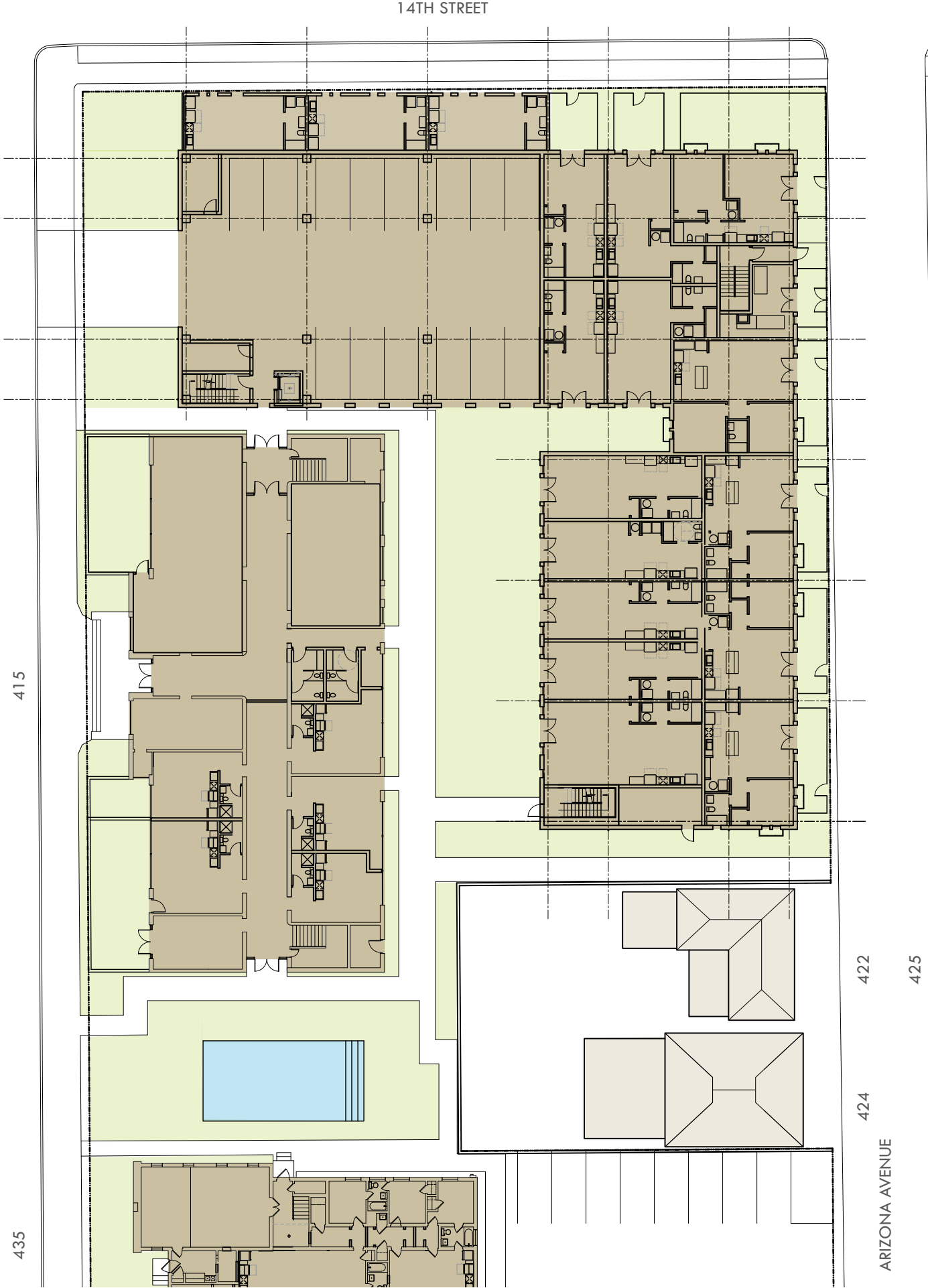


GO3

ALL SAINTS
375 S STONE 40 E 1 4TH 408-435 S 6TH
COURTESY REVIEWS
SITE PLAN - REVISED



6TH AVENUE

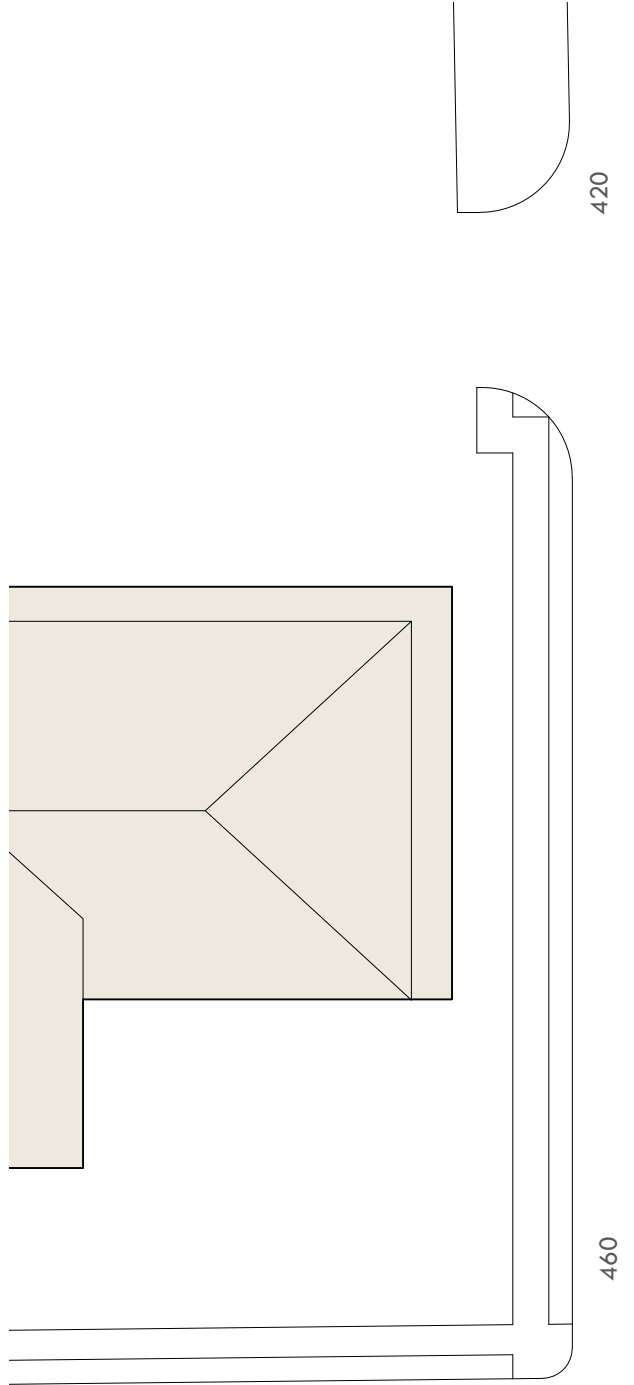


GO4

ALL SAINTS
 375 S STONE 40 E 1 4TH 408-435 S 6TH
 COURTESY REVIEWS
 PARTIAL SITE PLAN - NORTH

WORKER, INC.
 WORKER ARCHITECTURE PLLC
 workerincorporated.com
 520-664-4847
 BILL MACKEY

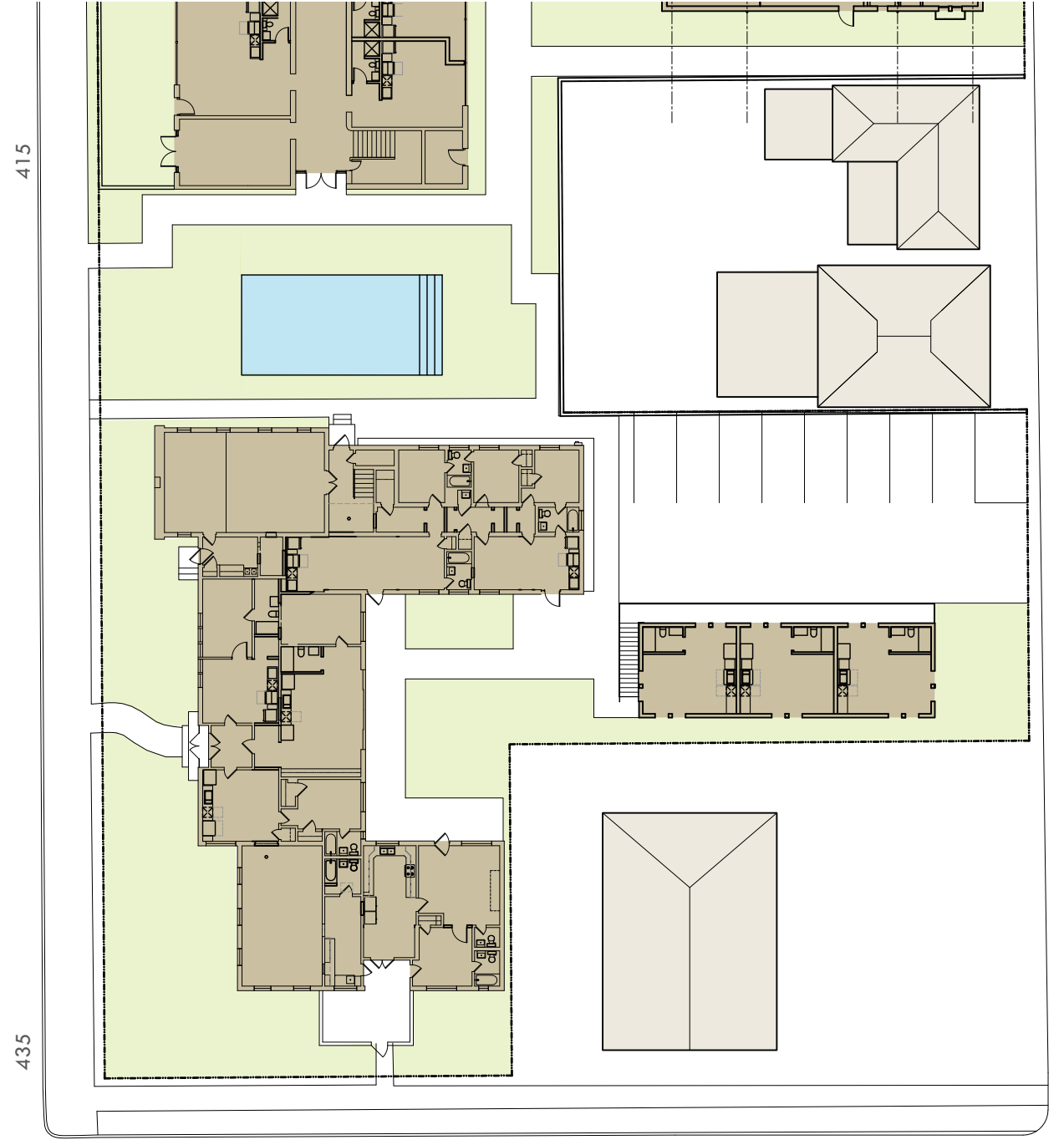
PRELIMINARY
 APR 19, 2019



420

460

6TH AVENUE



415

435

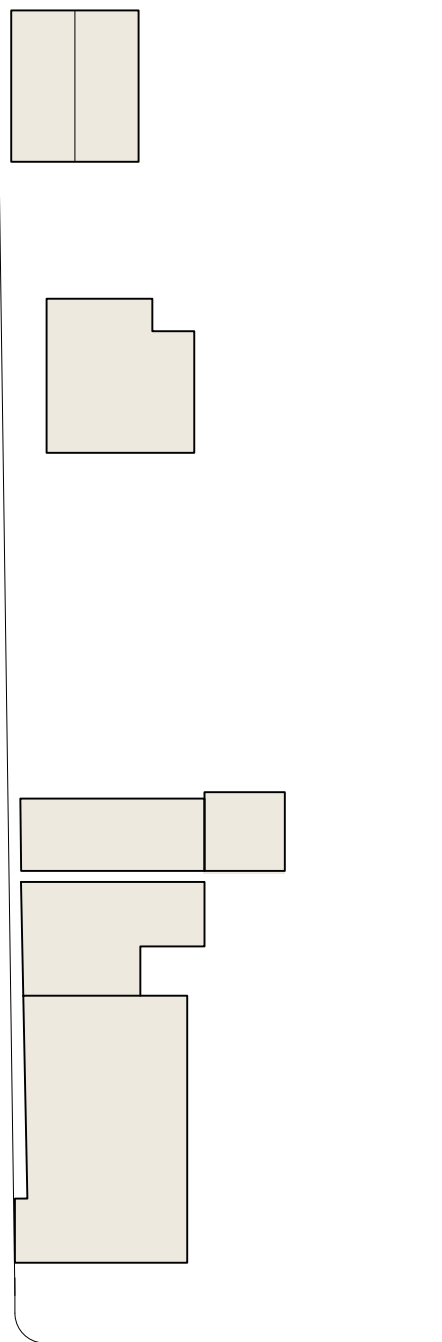
15TH STREET

422

424

ARIZONA AVENUE

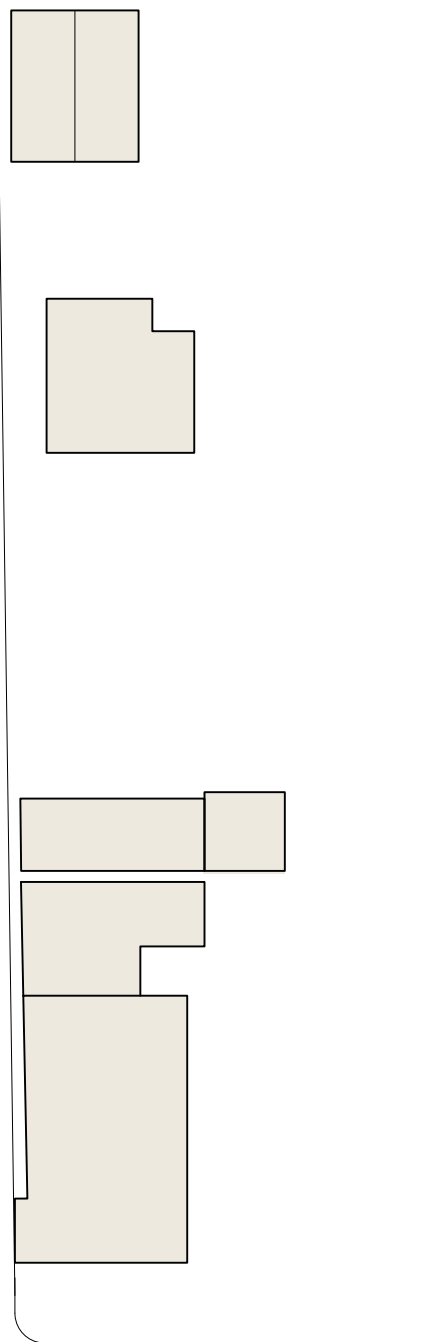
425



422

424

425



422

424

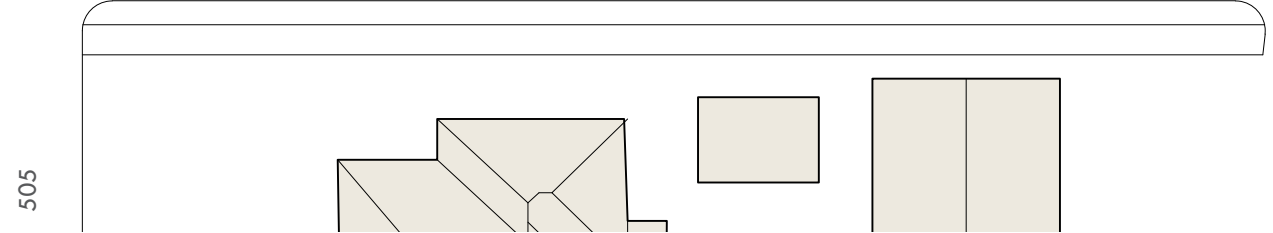
425



502

460

6TH AVENUE



505

435

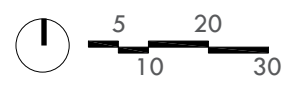
15TH STREET

115

120



125



GO5

ALL SAINTS

375 S STONE 40 E 1 4TH 408-435 S 6TH
COURTESY REVIEWS

PARTIAL SITE PLAN - SOUTH



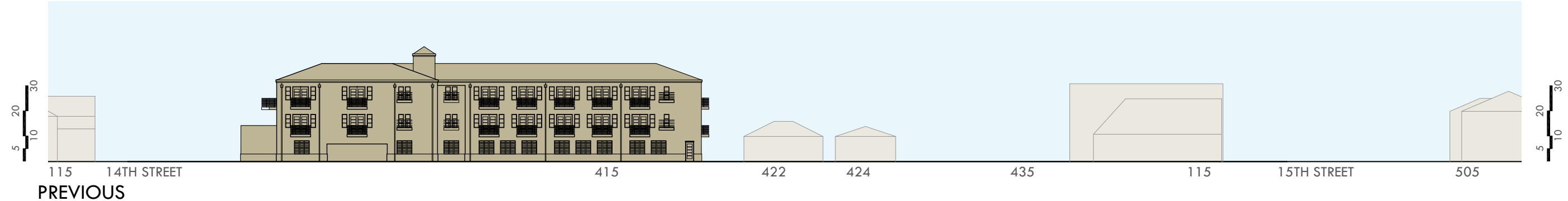
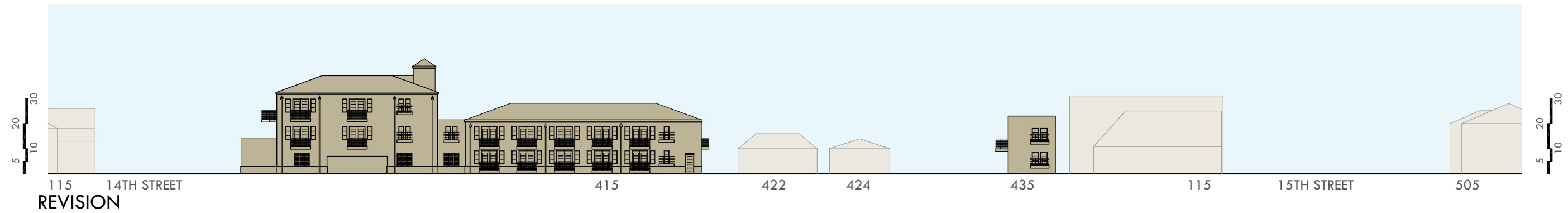
WORKER, INC.
WORKER ARCHITECTURE PLLC
workerincorporated.com
520-664-4847
BILL MACKEY



LOOKING FROM 6TH AVENUE



LOOKING FROM COURTYARD



ALL SAINTS
 375 S STONE 40 E 1 4TH 408-435 S 6TH
 COURTESY REVIEWS
 WEST ELEVATIONS

G06



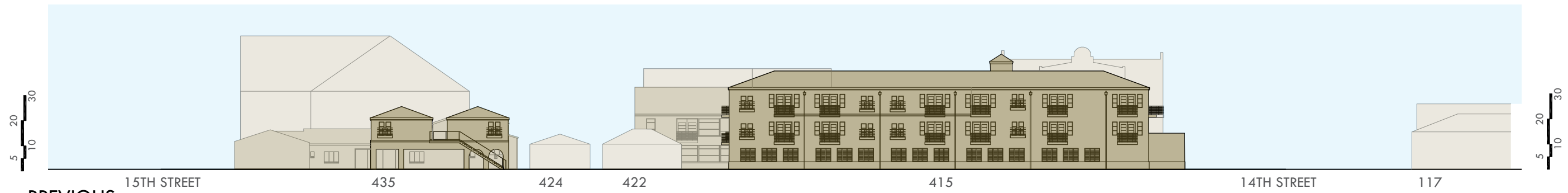
WORKER, INC.
WORKER ARCHITECTURE PLLC
workerincorporated.com
520-664-4847
BILL MACKEY



LOOKING FROM ARIZONA AVENUE



REVISION

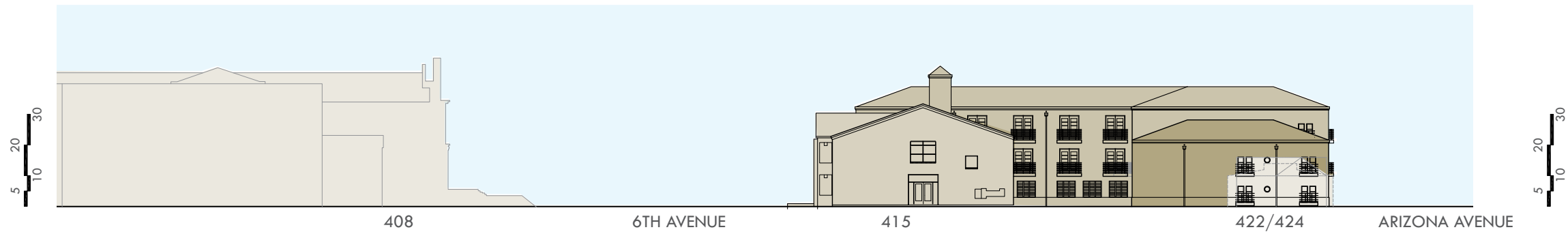


PREVIOUS

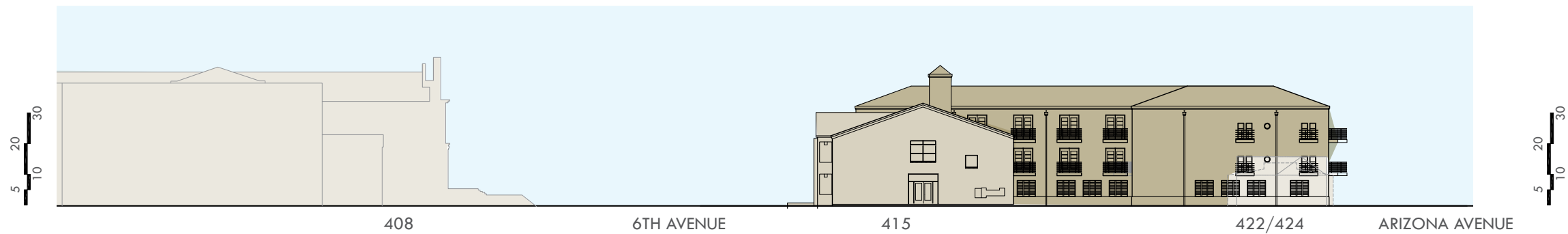
ALL SAINTS
375 S STONE 40 E 14TH 408-435 S 6TH
COURTESY REVIEWS
EAST ELEVATIONS

GO7

LOOKING FROM COURTYARD

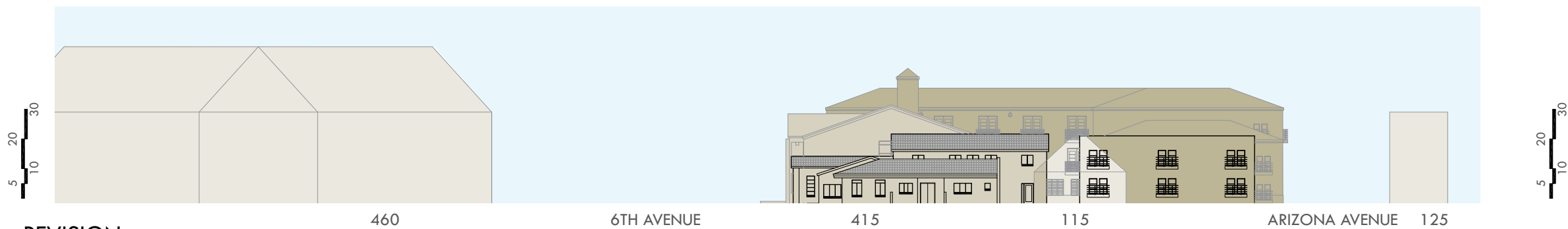


REVISION

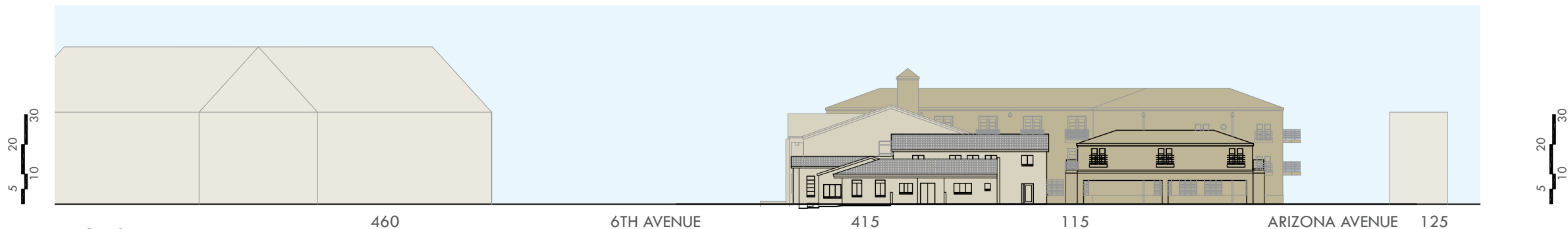


PREVIOUS

LOOKING FROM 15TH STREET



REVISION



PREVIOUS



WORKER, INC.
 WORKER ARCHITECTURE PLLC
 workerincorporated.com
 520-664-4847
 BILL MACKEY



ALL SAINTS
 375 S STONE 40 E 1 4TH 408-435 S 6TH
 COURTESY REVIEWS
 SOUTH ELEVATIONS

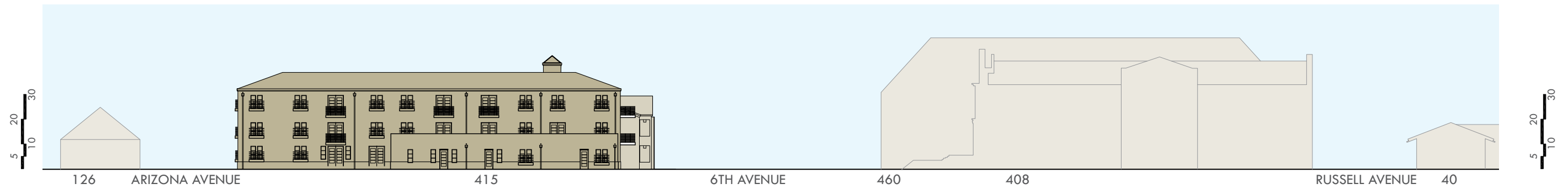
G08



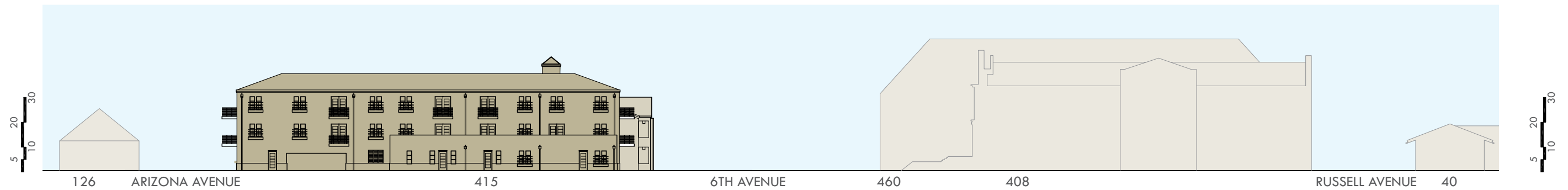
WORKER, INC.
WORKER ARCHITECTURE PLLC
workerincorporated.com
520-664-4847
BILL MACKEY



LOOKING FROM 14TH STREET



REVISION



PREVIOUS

G09
ALL SAINTS
 375 S STONE 40 E 14TH 408-435 S 6TH
 COURTESY REVIEWS
 NORTH ELEVATIONS