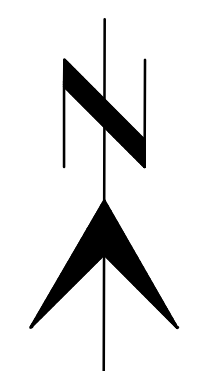
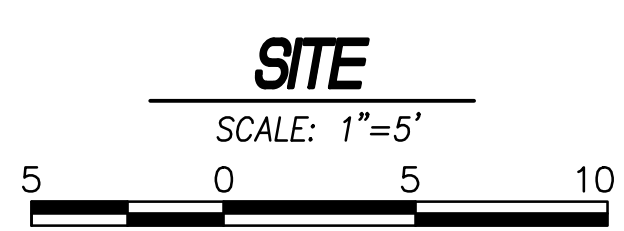
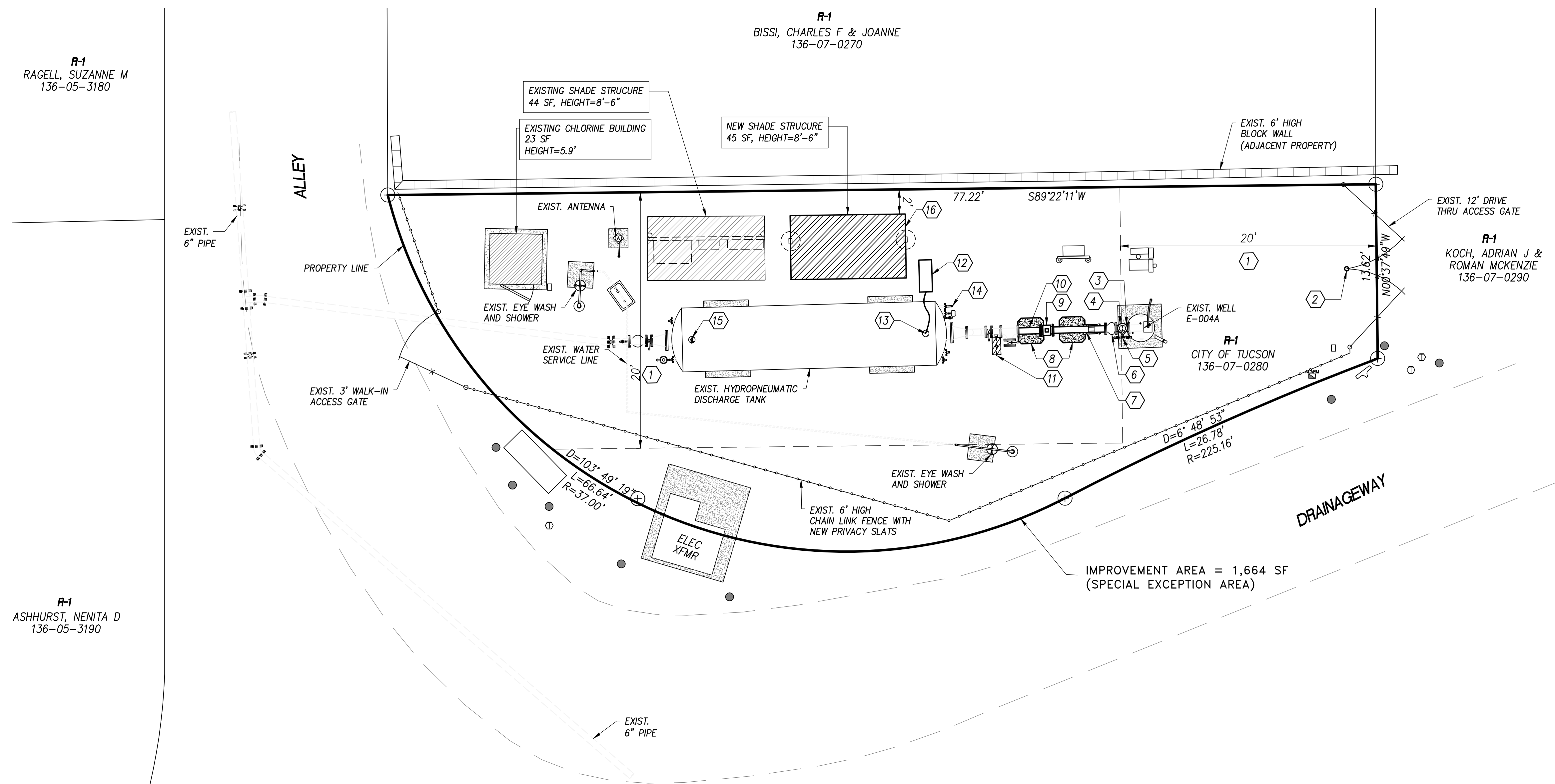


SITE KEYNOTES

1. PERIMETER YARD: 20' PER UDC SECTION 6.4.5.C.1.a
2. EXISTING GATE POST HOLE TO BE REPLACED WITH GATE MUSHROOM STOP
3. NEW 6" STANDARD STEEL SPOOL PIECE (S.S.S.P.)
4. NEW 2" COMBINATION AIR VALVE FOR HIGH FLOW-NON SLAM
5. NEW 3/4" TEST BIBB AND 3/4" HOSE BIBB W/VACUUM BREAKER ASSEMBLY
6. RE-LOCATED EXISTING 6" CHECK VALVE
7. NEW 6" S.S.S.P., WITH FLEX COUPLING & HARNESS ASSEMBLY
8. NEW PIPE SUPPORT AND CONCRETE BASE
9. NEW 6" MAGNETIC FLOW METER
10. NEW 6" S.S.S.P.
11. NEW CHLORINE INJECTION CONTAINER BOX
12. NEW PRESSURE CONTROL ASSEMBLY
13. NEW HYDRAULIC HOSE CONNECTION
14. NEW SIGHT GLASS ASSEMBLY
15. NEW POP SAFETY PRESSURE RELIEF VALVES
16. NEW SHADE STRUCTURE



**SPECIAL EXCEPTION**  
Preliminary Development Plan  
SE- 21- 26 Date 10/26/2021  
Planning & Development Services

SITE PLAN  
DEVELOPMENT PACKAGE  
FOR  
**WELL SITE E-004A**  
**SCADA UPGRADE**

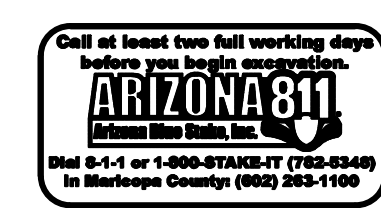
A PORTION OF THE NORTHEAS QUARTER OF THE NORTHWEST QUARTER,  
SECTION 22, T 14 S, R 15 E, G&SRM,  
CITY OF TUCSON, PIMA COUNTY, ARIZONA

DP21-\_\_\_\_\_

REF: COT ADMINISTRATIVE ADDRESS:  
SE-21-\_\_\_\_ 9102 E. PALM TREE DR.  
OCTOBER 2021 TUCSON, ARIZONA 85710  
EEC JOB NO 15051.03 SHEET 2 OF 2

**eec**  
Engineering and Environmental Consultants, Inc.  
555 E. River Road, Suite 301 | Tucson, Arizona 85704  
Tel 520.321.4625 | Fax 520.321.0333

civil engineering • land development  
surveying • environmental services  
staking • flood control and drainage  
transportation



NO.	DATE	REVISION	BY	CH	APPR