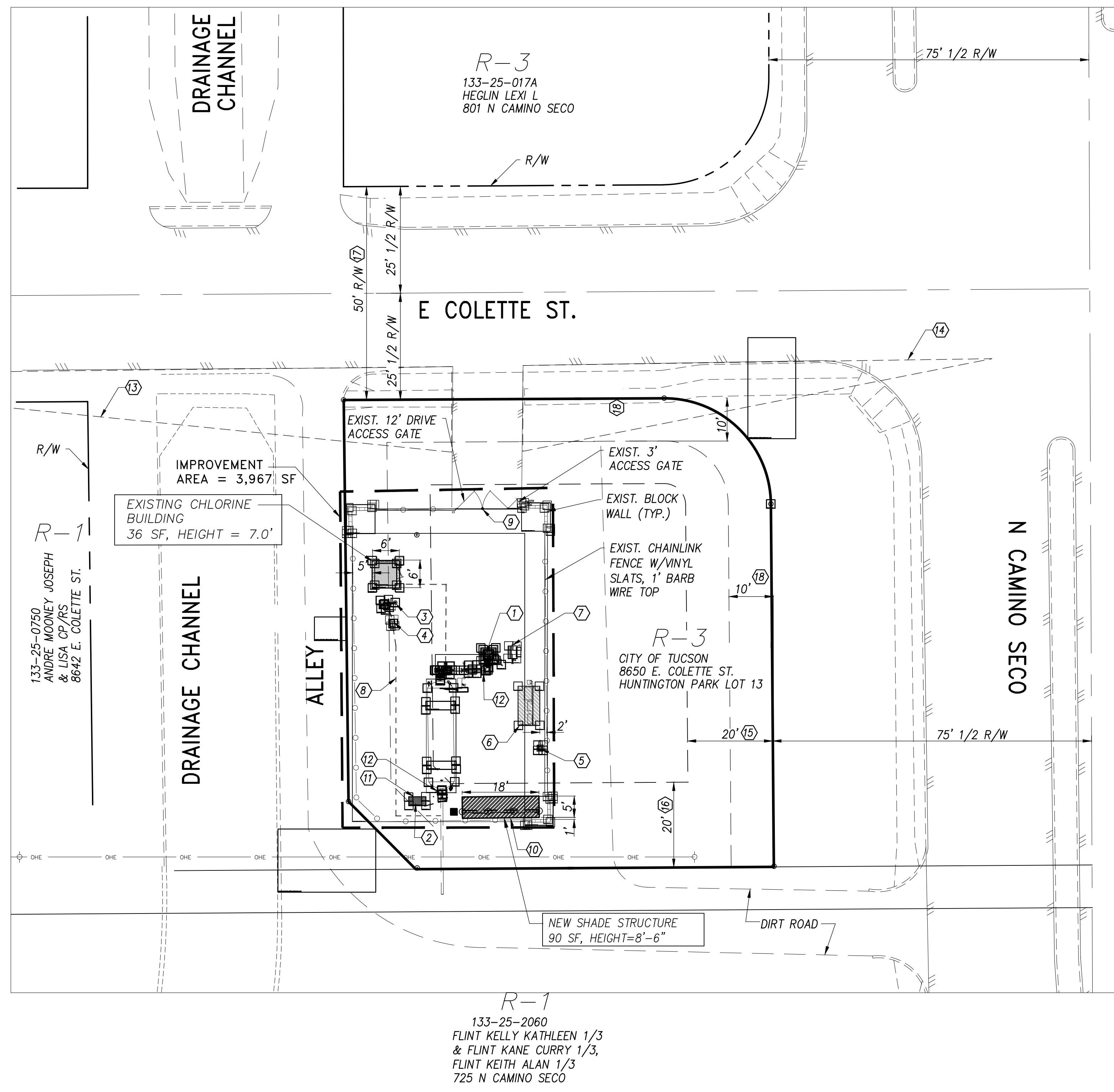
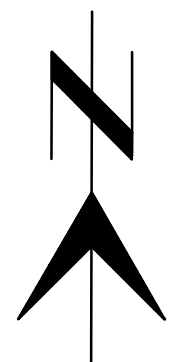


SCALE: 1"=10'



- SITE KEYNOTES
- ① EXIST. WELL SUBMERSIBLE PUMP & MOTOR
 - ② EXIST. AIR COMPRESSOR & ENCLOSURE
 - ③ EXIST. EMERGENCY SHOWER/EYEWASH
 - ④ EXIST. VALVE BOX
 - ⑤ EXIST. ANTENNA, POST AND CONCRETE FOUNDATION
 - ⑥ EXIST. SHADE STRUCTURE FOR ELECTRIC CONTROL PANELS
 - ⑦ EXIST. CONCRETE PAD
 - ⑧ EXIST. WATER SERVICE LINE, (EYEWASH, SHOWER)
 - ⑨ EXISTING GATE POST HOLE TO BE REPLACED WITH GATE MUSHROOM STOP, SEE DETAIL 6, SHEET 5
 - ⑩ INSTALL SHADE STRUCTURE WITH SUN SHEILD
 - ⑪ PAINT EXISTING AIR COMPRESSOR ENCLOSURE, SEE SPECIFICATIONS, DIVISION 9 (b)
 - ⑫ PAINT MISCELLANEOUS LOCATIONS WHERE NEEDED ON DISCHARGE PIPING,
 - ⑬ SIGHT VISIBILITY TRIANGLE (DRIVE/LOCAL) - 180' NEAR SIDE.
 - ⑭ SIGHT VISIBILITY TRIANGLE (DRIVE/LOCAL) - 110' FAR SIDE.
 - ⑮ STREET PERIMETER YARD: 20' PER UDC SECTION 6.4.5.C.1.a.
 - ⑯ PERIMETER YARD: 20' PER UDC SECTION 4.9.11.A.1 (FROM ANY ADJACENT RESIDENTIAL ZONE).
 - ⑰ 50' PUBLIC R/W PER BK. 15 M&P, PG. 48.
 - ⑱ STREET LANDSCAPE BORDER AND SCREENING:

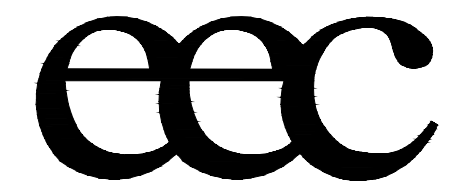
DEVELOPMENT PACKAGE
FOR
WELL SITE D-048A
SCADA UPGRADE

A PORTION OF
SECTION 09, T 14 S, R 15 E, G&SRM,
CITY OF TUCSON, PIMA COUNTY, ARIZONA

DP21-0347

T21SE _____ COT ADMINISTRATIVE ADDRESS:
8650 E. COLETTE STREET
TUCSON, ARIZONA 85711

OCT. 2021
EEC JOB NO 15051.04



civil engineering • land development
surveying • environmental services
staking • flood control and drainage
transportation

Engineering and Environmental Consultants, Inc.
555 E. River Road, Suite 301 | Tucson, Arizona 85704
Tel 520.321.4625 | Fax 520.321.0333



NO.	DATE	REVISION	BY	CH	APPR