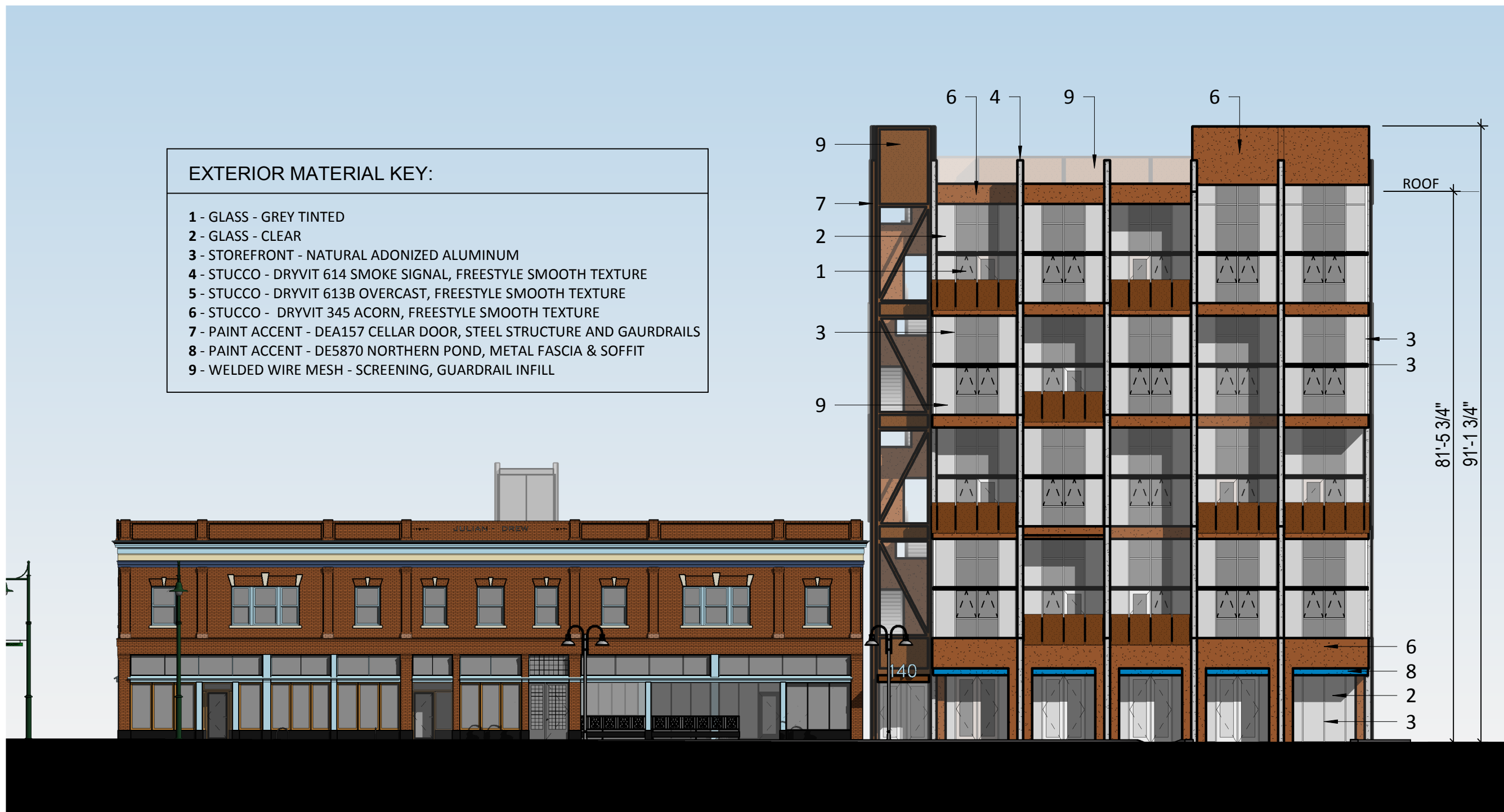


EXTERIOR MATERIAL KEY:

- 1 - GLASS - GREY TINTED
- 2 - GLASS - CLEAR
- 3 - STOREFRONT - NATURAL ADONIZED ALUMINUM
- 4 - STUCCO - DRYVIT 614 SMOKE SIGNAL, FREESTYLE SMOOTH TEXTURE
- 5 - STUCCO - DRYVIT 613B OVERCAST, FREESTYLE SMOOTH TEXTURE
- 6 - STUCCO - DRYVIT 345 ACORN, FREESTYLE SMOOTH TEXTURE
- 7 - PAINT ACCENT - DEA157 CELLAR DOOR, STEEL STRUCTURE AND GAURDRAILS
- 8 - PAINT ACCENT - DE5870 NORTHERN POND, METAL FASCIA & SOFFIT
- 9 - WELDED WIRE MESH - SCREENING, GUARDRAIL INFILL



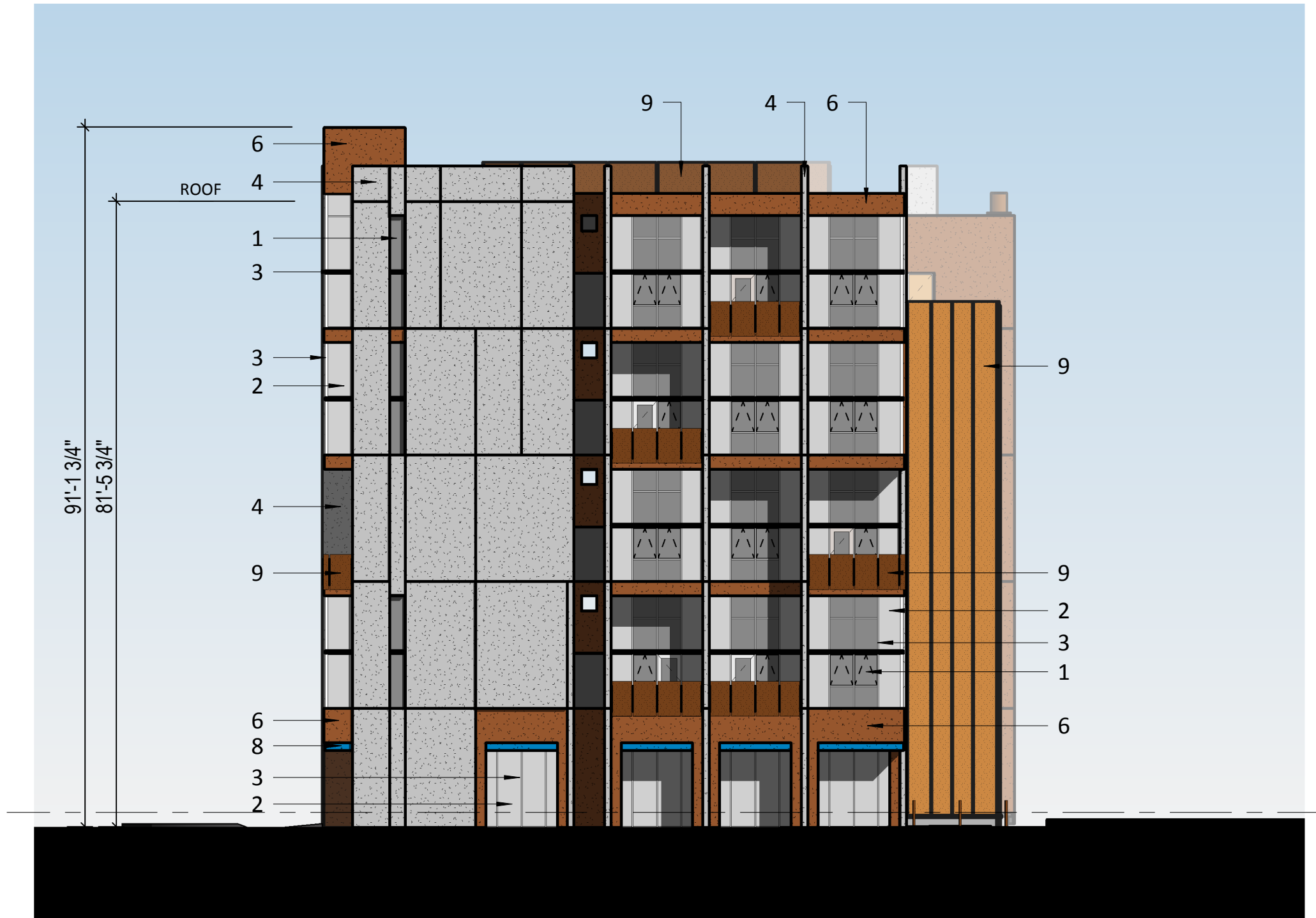
Julian Drew Lofts

NORTH ELEVATION
SCALE: 1/16" = 1'-0"

Engberg Anderson Project No. 193009

EXTERIOR MATERIAL KEY:

- 1 - GLASS - GREY TINTED
- 2 - GLASS - CLEAR
- 3 - STOREFRONT - NATURAL ADONIZED ALUMINUM
- 4 - STUCCO - DRYVIT 614 SMOKE SIGNAL, FREESTYLE SMOOTH TEXTURE
- 5 - STUCCO - DRYVIT 613B OVERCAST, FREESTYLE SMOOTH TEXTURE
- 6 - STUCCO - DRYVIT 345 ACORN, FREESTYLE SMOOTH TEXTURE
- 7 - PAINT ACCENT - DEA157 CELLAR DOOR, STEEL STRUCTURE AND GAURDRAILS
- 8 - PAINT ACCENT - DE5870 NORTHERN POND, METAL FASCIA & SOFFIT
- 9 - WELDED WIRE MESH - SCREENING, GUARDRAIL INFILL



Julian Drew Lofts

WEST ELEVATION
SCALE: 1/16" = 1'-0"

Engberg Anderson Project No. 193009

EXTERIOR MATERIAL KEY:

- 1 - GLASS - GREY TINTED
- 2 - GLASS - CLEAR
- 3 - STOREFRONT - NATURAL ADONIZED ALUMINUM
- 4 - STUCCO - DRYVIT 614 SMOKE SIGNAL, FREESTYLE SMOOTH TEXTURE
- 5 - STUCCO - DRYVIT 613B OVERCAST, FREESTYLE SMOOTH TEXTURE
- 6 - STUCCO - DRYVIT 345 ACORN, FREESTYLE SMOOTH TEXTURE
- 7 - PAINT ACCENT - DEA157 CELLAR DOOR, STEEL STRUCTURE AND GAURDRAILS
- 8 - PAINT ACCENT - DE5870 NORTHERN POND, METAL FASCIA & SOFFIT
- 9 - WELDED WIRE MESH - SCREENING, GUARDRAIL INFILL

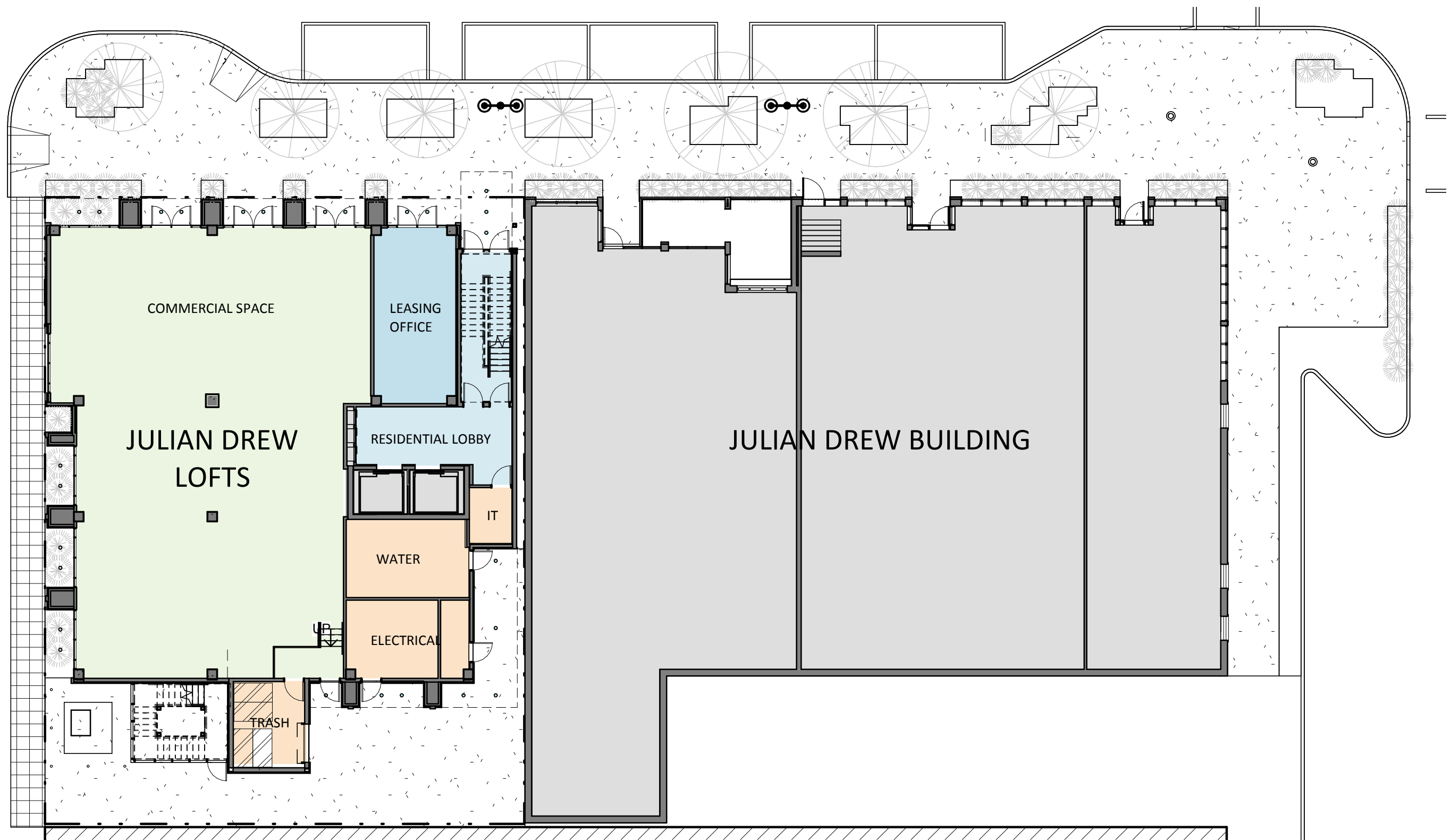




Julian Drew Lofts

LEVEL THREE
 SCALE: 1/16" = 1'-0"

Engberg Anderson Project No. 193009



Julian Drew Lofts

LEVEL ONE
 SCALE: 1/16" = 1'-0"

Engberg Anderson Project No. 193009



Julian Drew Lofts

PERSPECTIVE VIEWS
SCALE:

Engberg Anderson Project No. 193009



Julian Drew Lofts

PERSPECTIVE VIEWS
SCALE:

Engberg Anderson Project No. 193009