

E 7th St



N 6th Av

N 5th Av



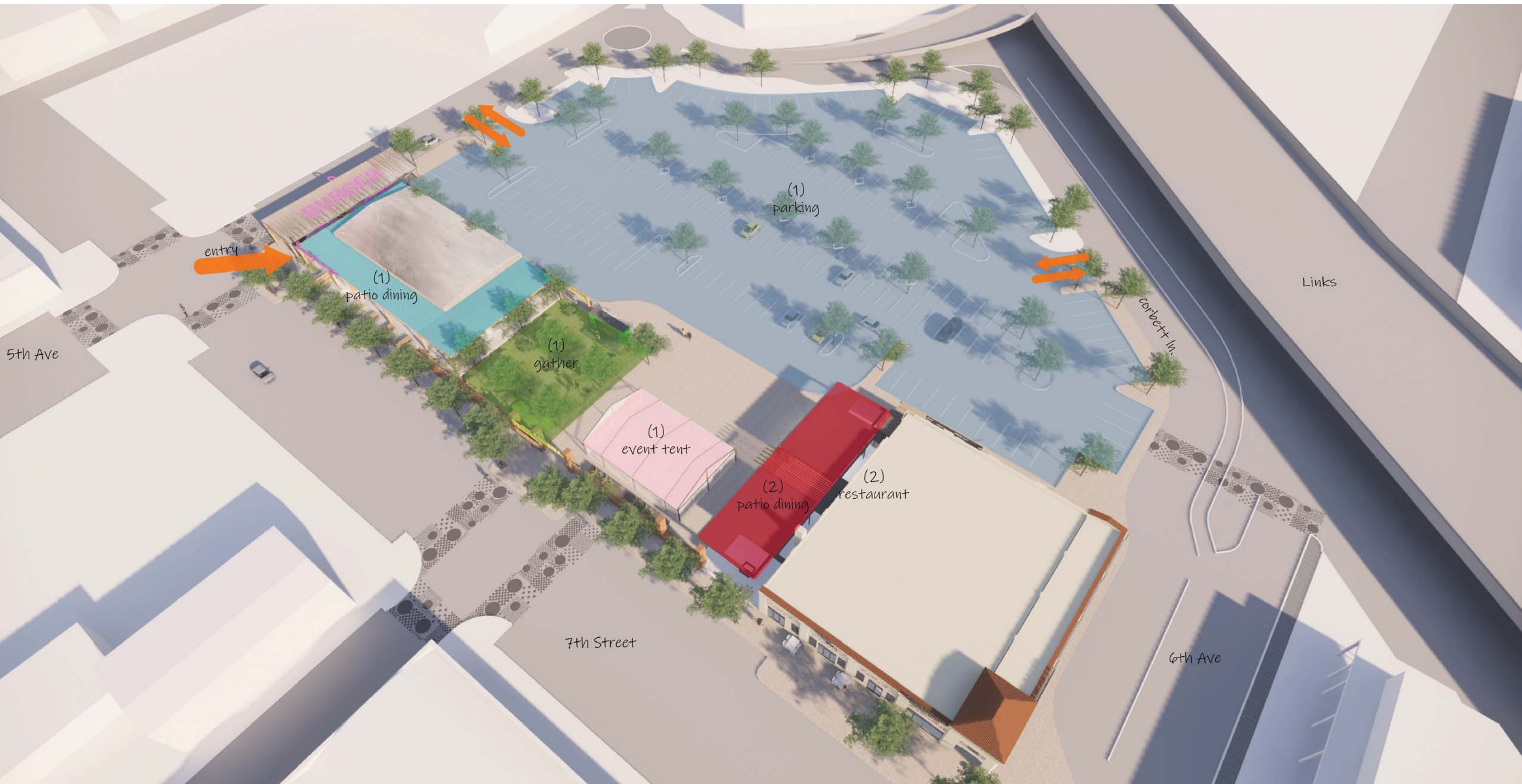


 Sunlink Light Rail
 Downtown Links Parkway Project

 Inaccessible at Grade
 Pedestrian Underpass

 Roundabout

aerial location phase 1 rendering



entry

(1)
patio dining

(1)
gather

(1)
event tent

(2)
patio dining

(2)
restaurant

(1)
parking

5th Ave

7th Street

6th Ave

Corbett Ln.

Links



entry

(1)
patio dining

(1)
parking

(1)
gather

(1)
event tent

(2)
patio dining

(2)
restaurant

7th Street

6th Ave

Links

Corbett Ln.

5th Ave

RENDERING VIEW

PATIO





(1) parking

entry

(1) patio dining

(1) gather

(1) event tent

(2) patio dining

(2) restaurant

7th Street

6th Ave

5th Ave

Links

Corbett Ln.





(1)
parking

entry

(1)
patio dining

(1)
gather

(1)
event tent

(2)
patio dining

(2)
restaurant

Links

Corbett Ln.

5th Ave

7th Street

6th Ave



LOVE BURGER 3D VIEW 7
@the corbett



entry

(1)
patio dining

(1)
gather

(1)
event tent

(2)
patio dining

(2)
restaurant

(1)
parking

5th Ave

7th Street

6th Ave

Links

Corbett Ln.







entry

(1)
patio dining

(1)
gather

(1)
event tent

(2)
patio dining

(2)
restaurant

(1)
parking

5th Ave

7th Street

6th Ave

Corbett Ln.

Links



Kids Play Games

Tent

Ice Cream Truck

Multi Use

Dog Run

Stage Entry Container

Special Use Extension

Love Burger

Entry

Port Cochere

pick up

7 TH STREET

6TH AVENUE

CORBETT BUILDING

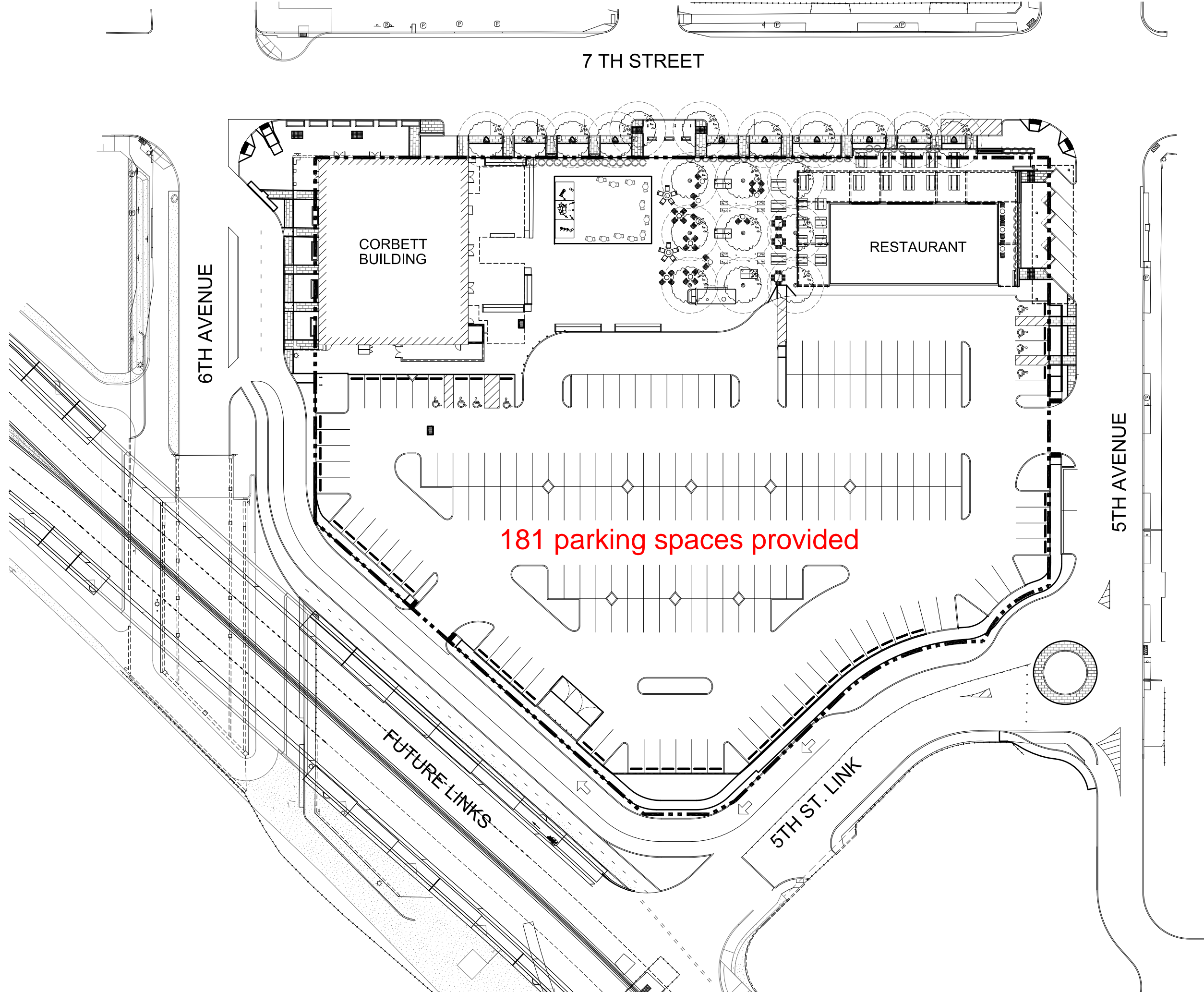
RESTAURANT

5TH AVENUE

181 parking spaces provided

FUTURE LINKS

5TH ST. LINK



NOTE: REFER TO LANDSCAPE NOTES AND SCHEDULE ON SHEET 8 FOR DOTD PLANTING IN RIGHT OF WAY (ROW) NOTES.

E 7TH STREET (PUBLIC)
BK. 03, PG. 71, MAPS AND PLATS

PUBLIC R.O.W. VARIES ALONG THE LENGTH OF THIS PROJECT
76.15'-77.70'

I-1
C.O.T.
BK. 03, PG. 53

N 6TH AVENUE (PUBLIC) (MS&R)
BK. 03, PG. 71, MAPS AND PLATS

PUBLIC R.O.W. VARIES 97.91' - 100.92' ALONG THIS PROJECT

N 5TH AVENUE (PUBLIC)
BK. 03, PG. 71, MAPS AND PLATS

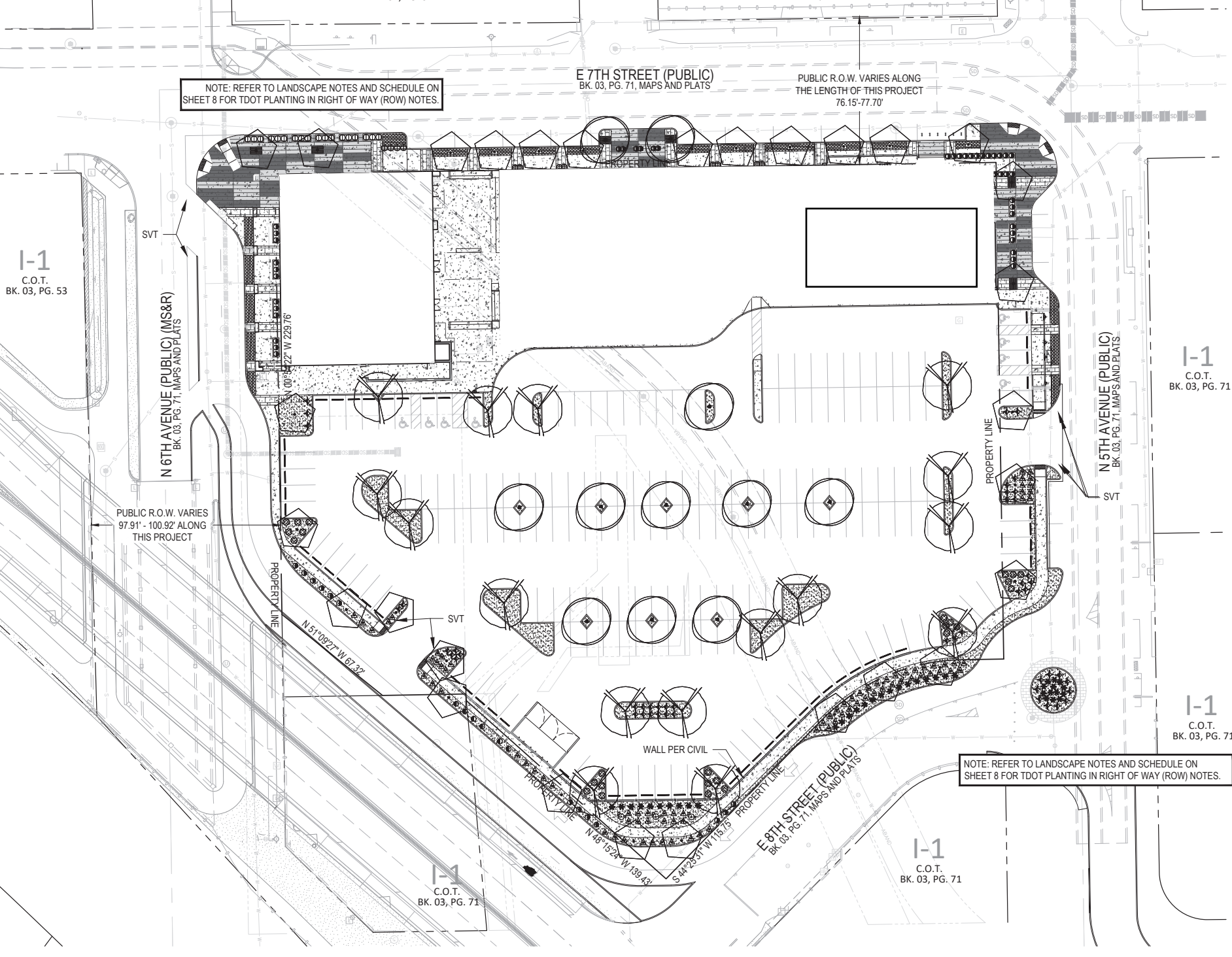
I-1
C.O.T.
BK. 03, PG. 71

I-1
C.O.T.
BK. 03, PG. 71

I-1
C.O.T.
BK. 03, PG. 71

I-1
C.O.T.
BK. 03, PG. 71

NOTE: REFER TO LANDSCAPE NOTES AND SCHEDULE ON SHEET 8 FOR DOTD PLANTING IN RIGHT OF WAY (ROW) NOTES.





entry

(1)
patio dining

(1)
gather

(1)
event tent

(2)
patio dining

(2)
restaurant

(1)
parking

5th Ave

7th Street

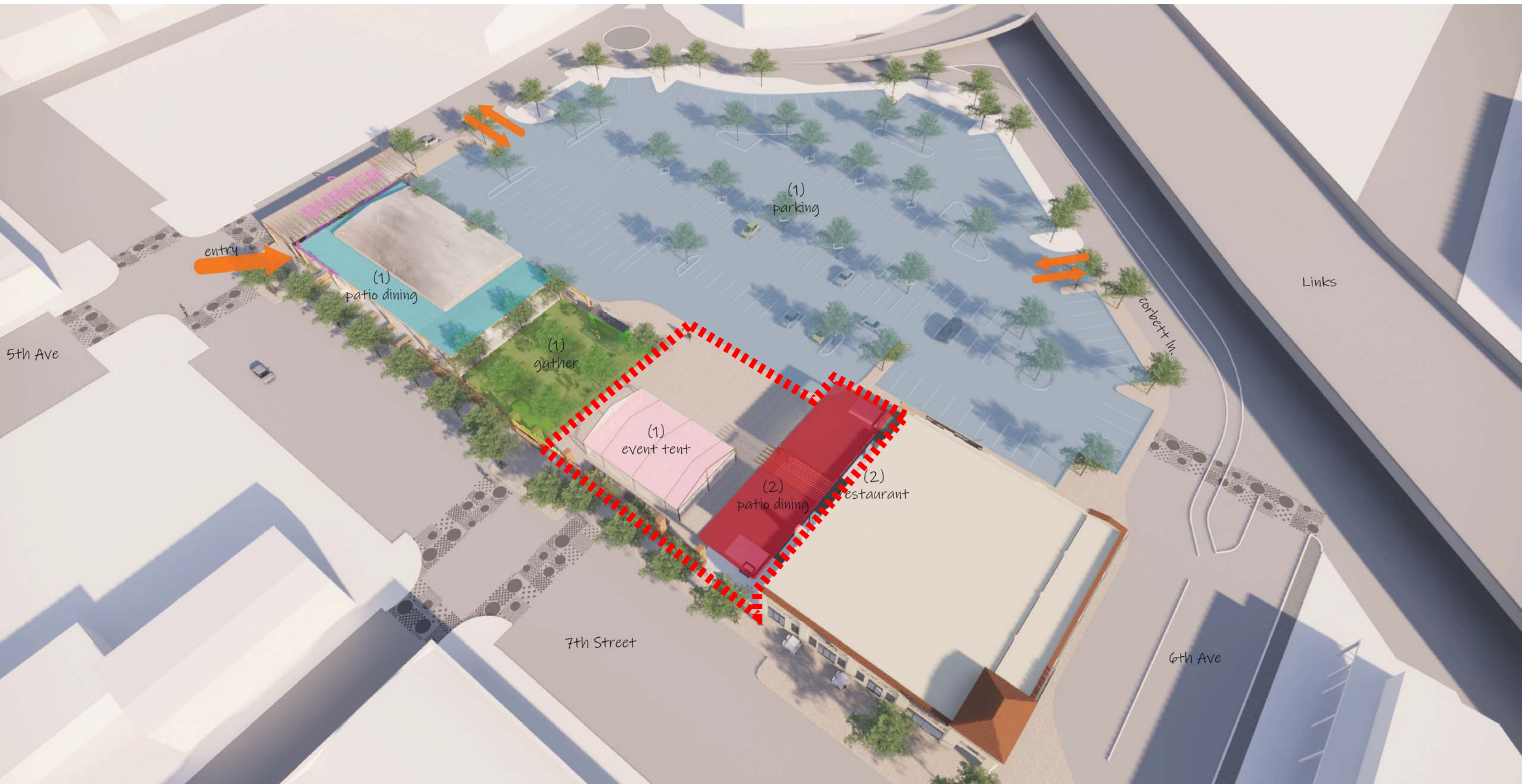
6th Ave

Links

Corbett Ln.







entry

(1)
patio dining

(1)
gather

(1)
event tent

(2)
patio dining

(2)
restaurant

(1)
parking

5th Ave

7th Street

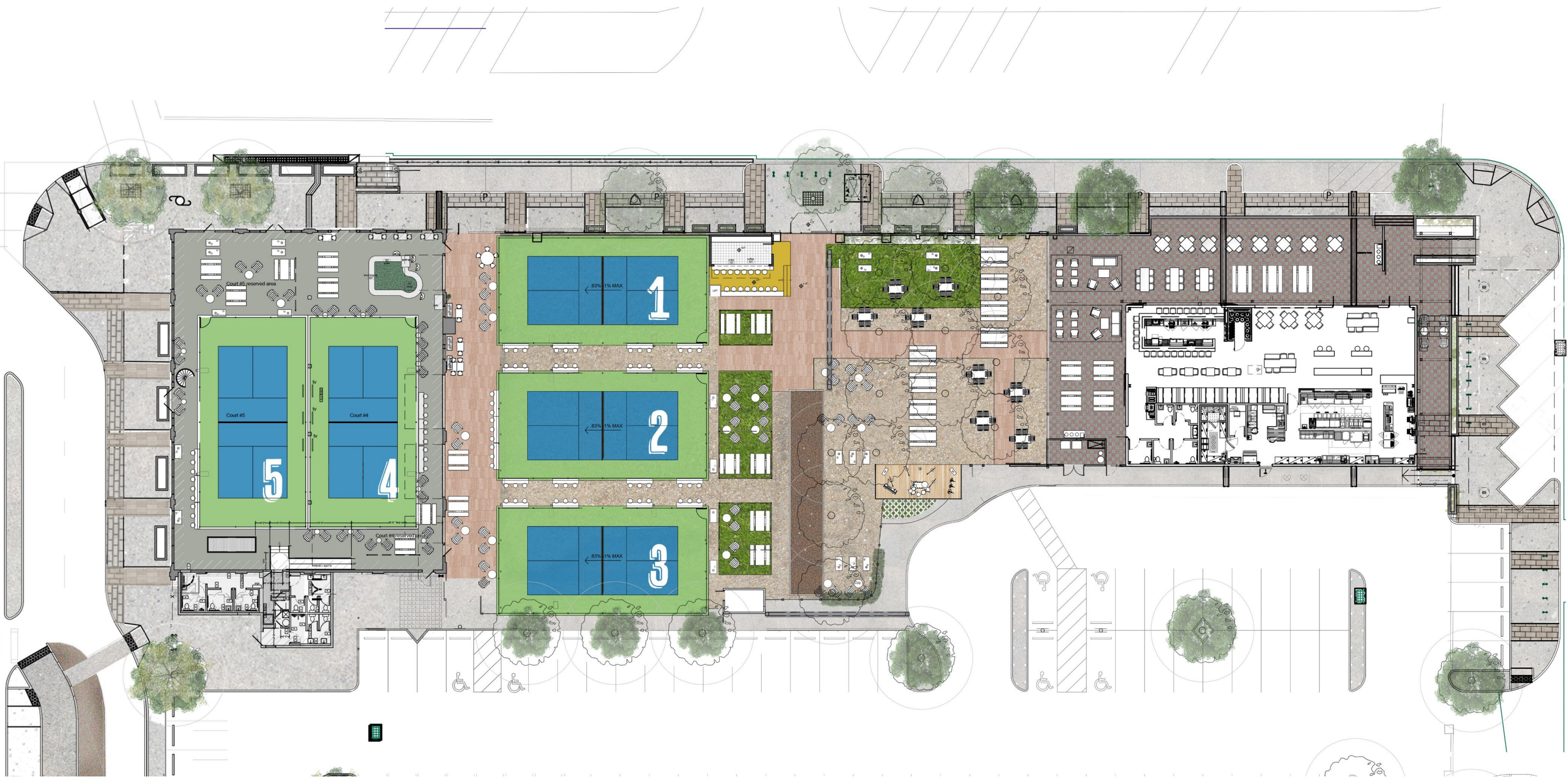
6th Ave

Links

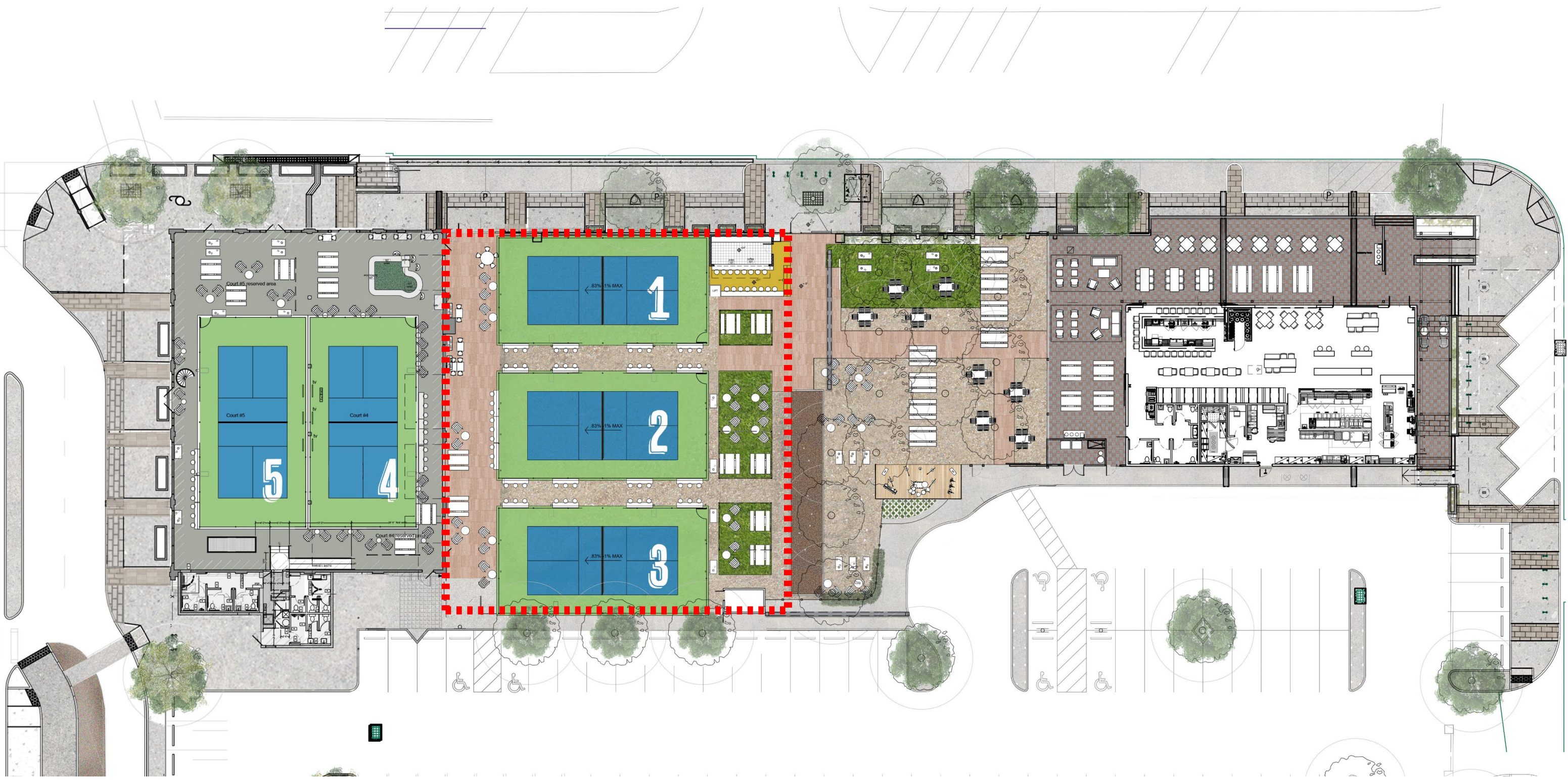
Corbett Ln.



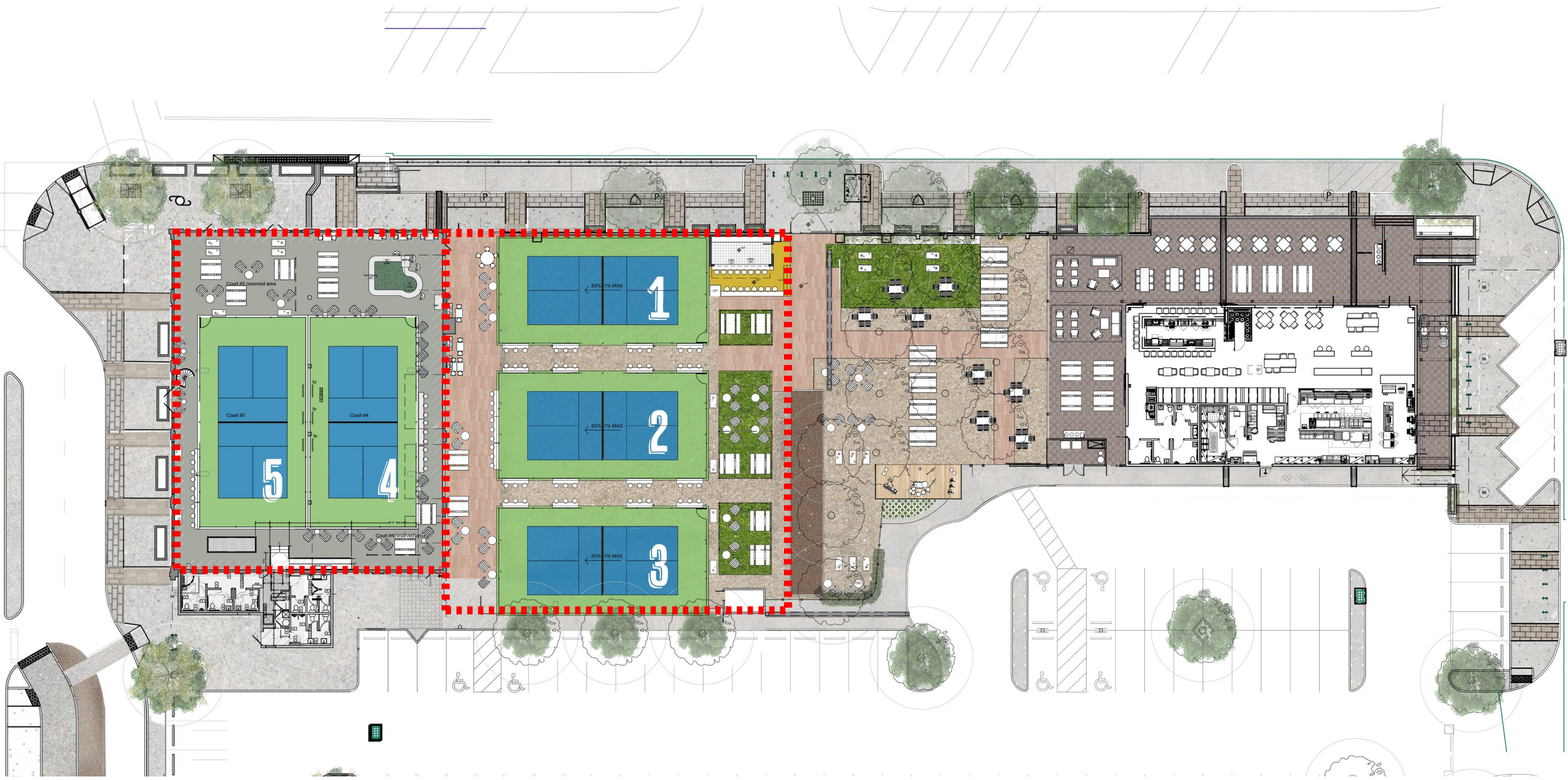
6TH AVE



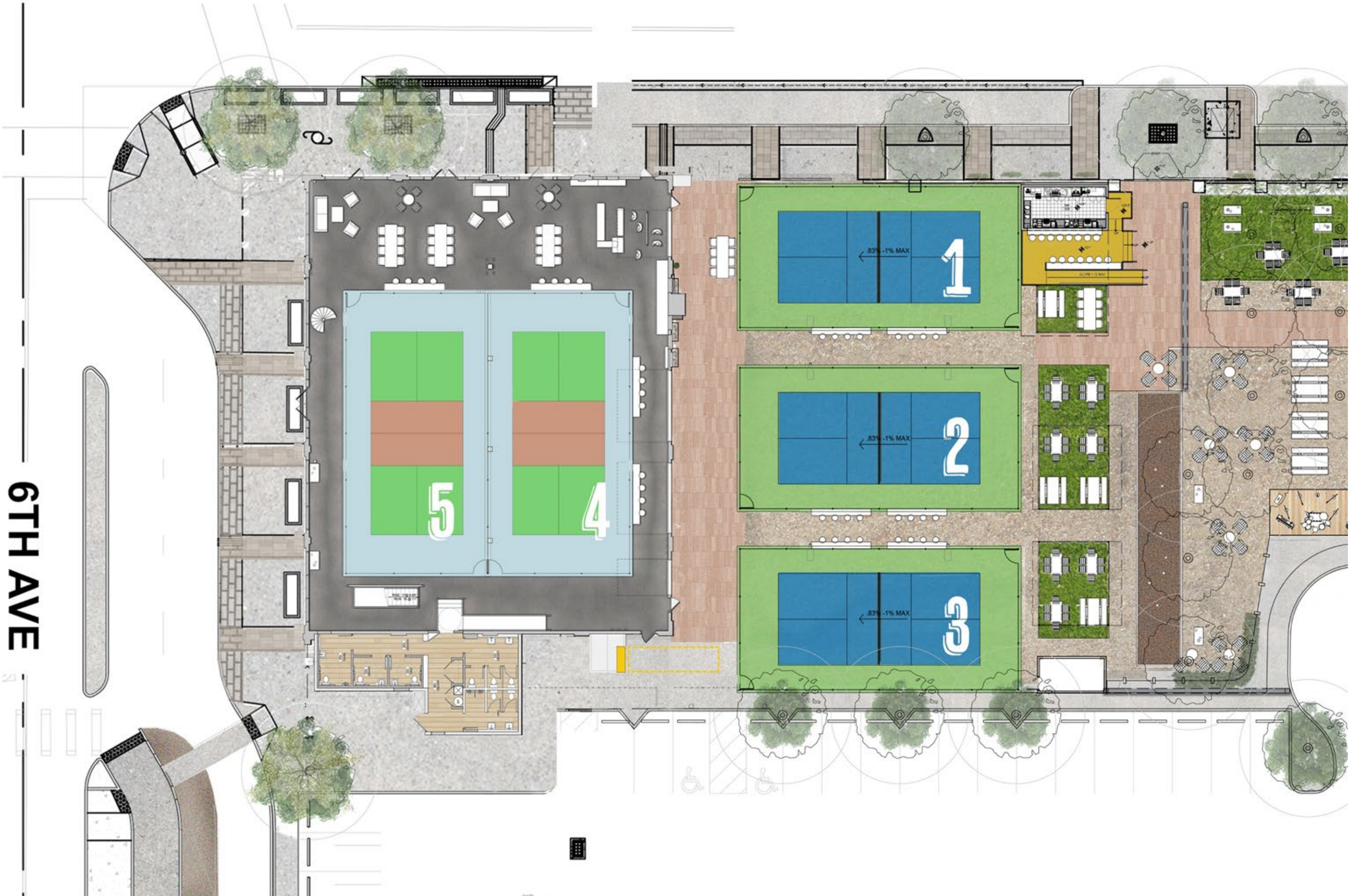
6TH AVE



6TH AVE



6TH AVE

























E 7TH ST (PUBLIC)

BK. 03, PG. 71, MAPS AND PLATS

N 6TH AV (PUBLIC)(MS&R)

BK. 03, PG. 71, MAPS AND PLATS

EXISTING 2-STORY
(W/ BASEMENT)
BUILDING #1
(TO BE RENOVATED)
AREA=16,440 SF
HEIGHT=20'
(194 SEATS)

NEW PATIO
AREA=1,628 SF

NEW BLDG #3
AREA=300 SF

NEW PATIO
AREA=3,520 SF

NEW 1-STORY
BUILDING #2
AREA=4,000 SF
HEIGHT=20'
(146 SEATS)

NEW STORAGE
AREA=85 SF

184 parking spaces provided

CORBETT LN (PUBLIC)

FUTURE MACLOVIO BARRAZA PW (PUBLIC)

5TH AV LINK (PUBLIC)

N 5TH AV (PUBLIC)

BK. 03, PG. 71, MAPS AND PLATS

E 8TH ST (PUBLIC)

BK. 03, PG. 71, MAPS AND PLATS

I-1
C.O.T.
BK. 03, PG. 53

I-1
C.O.T.
BK. 03, PG. 71

I-1
C.O.T.
BK. 03, PG. 71

I-1
C.O.T.
BK. 03, PG. 71

NOTE: REFER TO LANDSCAPE NOTES AND SCHEDULE ON SHEET 8 FOR DTM PLANTING IN RIGHT OF WAY (ROW) NOTES.

E 7TH STREET (PUBLIC)
BK. 03, PG. 71, MAPS AND PLATS

PUBLIC R.O.W. VARIES ALONG THE LENGTH OF THIS PROJECT
76.15'-77.70'

HANDRAIL PER CIVIL

OVERHANG PER ARCHITECTURE

BIKE RACKS PER CIVIL

HANDRAIL PER CIVIL

PROPERTY LINE

HANDRAIL PER CIVIL

BOLLARDS PER CIVIL

N 6TH AVENUE (PUBLIC) (MS&R)
BK. 03, PG. 71, MAPS AND PLATS

SVT

I-1
C.O.T.
BK. 03, PG. 53

SHORT TERM BIKE PARKING PER CIVIL

LONG TERM BIKE PARKING PER CIVIL

N 00°54'22" W 229.76'

CURB INLET PER CIVIL

42" SCREEN PER ARCHITECTURE

WHEEL STOP, TYP. PER CIVIL

LIGHT, TYP. PER ELECTRICAL ENGINEER

42" SCREEN PER ARCHITECTURE

NOT PART OF THIS PLAN.
REFER TO PIA T20SA00241.

PUBLIC R.O.W. VARIES
97.91' - 100.92' ALONG
THIS PROJECT

PROPERTY LINE

SVT

N 51°09'21" W 67.32'

CORBETT LANE (PUBLIC)

WALL PER CIVIL

NOT PART OF THIS PLAN.
REFER TO PIA T20SA00241.

PEDESTRIAN PATH REFER
TO PIA T20SA00241.

NOT PART OF THIS PLAN.
REFER TO PIA T20SA00241.

NOTE: REFER TO LANDSCAPE NOTES AND SCHEDULE ON SHEET 8 FOR DTM PLANTING IN RIGHT OF WAY (ROW) NOTES.

N 5TH AVENUE (PUBLIC)
BK. 03, PG. 71, MAPS AND PLATS

I-1
C.O.T.
BK. 03, PG. 71

SVT

I-1
C.O.T.
BK. 03, PG. 71

I-1
C.O.T.
BK. 03, PG. 71

I-1
C.O.T.
BK. 03, PG. 71

E 8TH STREET (PUBLIC)
BK. 03, PG. 71, MAPS AND PLATS

N 48°15'24" W 139.43'
S 44°25'31" W 115.75'

