

# AZTLAN ARCHAEOLOGY, INC.

ENVIRONMENTAL CONSULTANTS

1026 North Columbus Blvd. Tucson, Arizona 85711

(520) 620-1480

FAX (520) 620-1432

## **Results of a Records Review and Assessment of the Downtown Motor Hotel at 383 South Stone Avenue in Tucson, Arizona**

Prepared by:

Laurie V. Slawson, Ph.D., RPA  
Principal Investigator

Submitted to:

Mark Shoemacher  
Bethel Development, Inc.  
6021 East Paseo Santa Teresa  
Tucson, Arizona 85750

Technical Report No. 2014-24

November 17, 2014 (revised 12/30/14)

## Abstract

**Agency:**

City of Tucson

**Project Title:**

Results of a Records Review and Assessment of the Downtown Motor Hotel at 383 South Stone Avenue in Tucson, Arizona (report dated 11/17/14; revised 12/30/14)

**Project Description:**

A records search and assessment was made of the historic Downtown Motor Hotel. The purpose of the Class I overview and assessment was to locate and describe any cultural resources near the property and to do a walk-around of the property, which is a standing, unoccupied building.

**Location:**

NE $\frac{1}{4}$ SE $\frac{1}{4}$ NW $\frac{1}{4}$  of Section 13, Township 14 South, Range 13 East; Gila and Salt River Baseline and Meridian, U.S.G.S. Tucson, Arizona 7.5 Minute quadrangle map; Pima County, Arizona.

**Number of Acres Surveyed:**

1 acre

**Number of Sites:**

None

**Number of National Register-Eligible Sites:**

None

**Number of National Register-Ineligible Sites:**

None

**Summary:**

Two hundred and eight survey and monitoring projects have been conducted within a mile of the project area, which has been surveyed previously. Fifty-nine sites, 38 National Register-listed properties, and more than 1,000 other historic properties have been recorded within that same distance. The project area is bounded by two National Register-listed properties (AZ BB:13:76 and 626). However, if the street façade of the Downtown Motor Hotel is partially retained, little to no visual impact should occur to AZ BB:13:76 and AZ BB:13:626.

---

**<sup>1</sup>STATEMENT OF CONFIDENTIALITY:** Disclosure of the locations of historic properties to the public may be in violation of both federal and state laws.

Applicable United States laws include, but may not be limited to, Section 304 of the National Historic Preservation Act (16 U.S.C. 470w-3) and the Archaeological Resources Protection Act (16 U.S.C. §470hh). In Arizona, applicable state laws include, but may not be limited to, Arizona Revised Statute Title 39, Section 125.

## **Results of a Records Review and Assessment of the Downtown Motor Hotel at 383 South Stone Avenue in Tucson, Arizona**

A records search and assessment was made of the Downtown Motor Hotel, which is an historic property located in downtown Tucson, Arizona. The purpose of the Class I overview and assessment was to locate and describe any cultural resources near the property and to do a walk-around of the property, which is a standing, unoccupied building. The research was conducted by Laurie V. Slawson (principal investigator) and Loral Myers (Laboratory Director) November 12-17, 2014.

### **Project Area Location**

The Downtown Motor Hotel is located at 383 South Stone Avenue in Tucson (Pima County), Arizona. This location is in the NE $\frac{1}{4}$ SE $\frac{1}{4}$ NW $\frac{1}{4}$  of Section 13, Township 14 South, Range 13 East; ; the township and range are located with respect to the Gila and Salt River Baseline and Meridian, on the U.S.G.S. Tucson, Arizona (1996) 7.5 Minute quadrangle map. The project area location is shown in Figure 1.

### **Environmental Setting**

The project area is situated within the Basin and Range physiographic province and the native vegetation in the project area is characteristic of the Arizona Upland Subdivision of the Desertscrub Formation (Brown and Lowe 1994). Buildings and structures in the vicinity of the project area are both historic (i.e. more than 50 years old) and recent in age. Views of the property are shown in Figures 2 and 3.

### **Cultural History**

Prehistoric human occupation in the Tucson Basin spans almost 12 millennia and three major cultural periods, consisting of Paleoindian, Archaic, and Hohokam. The dating of the temporal subdivisions within these periods, which are defined by their associated cultural attributes, is of long-standing concern to archaeologists working in the basin. Refinements to the prehistoric chronology of the Tucson Basin continue to be proposed in the archaeological literature as prior research is reexamined and additional cultural attribute data and chronometric dates are obtained through ongoing research. A currently accepted prehistoric chronology for the Tucson Basin is shown in Table 1.

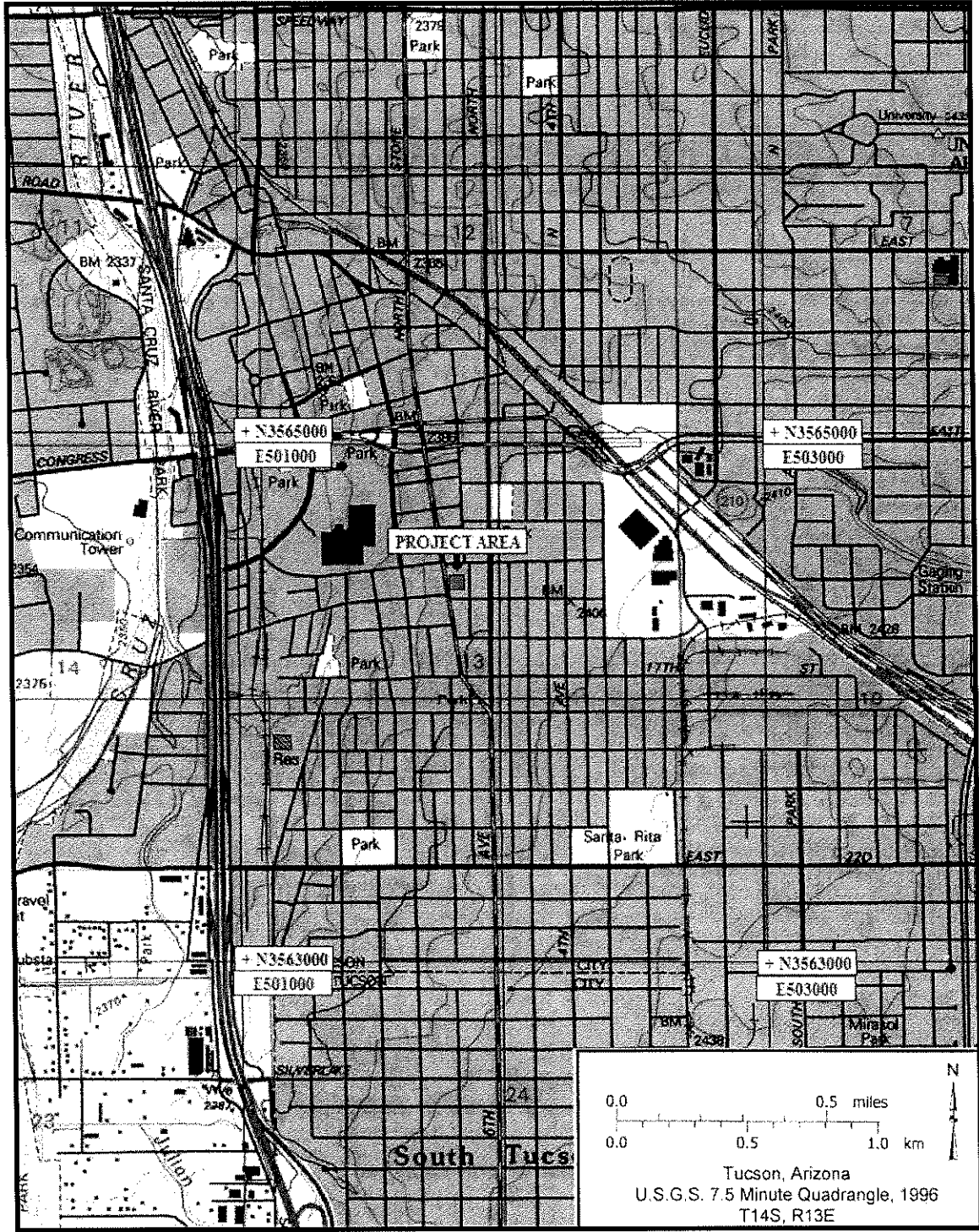


Figure 1. Location of the project area (U.S.G.S. Tucson, Arizona 7.5 Minute quadrangle map, T14S, R13E; scale = 1:24,000). UTM coordinates are recorded in North American Datum (NAD) 83.



a

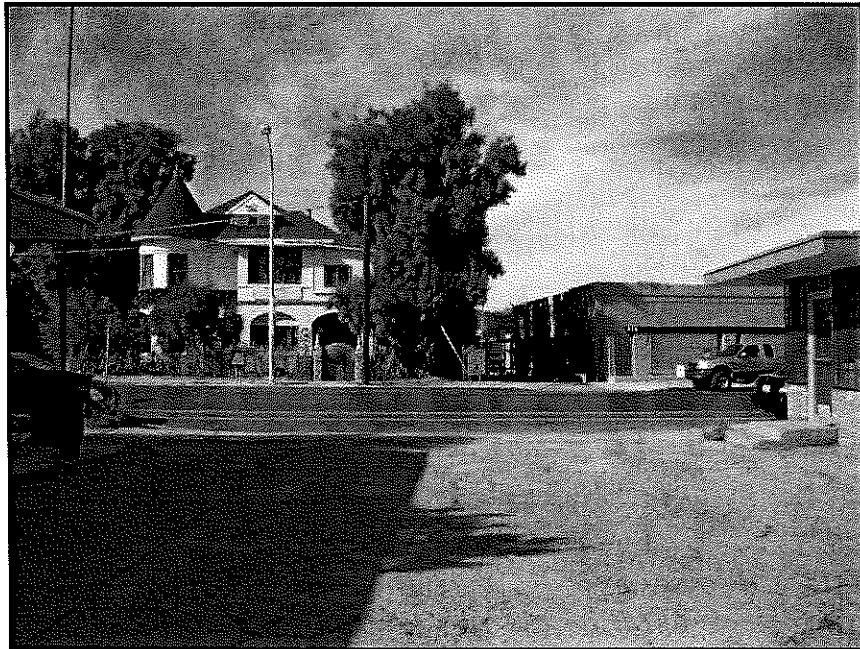


b

Figure 2. Views of the Downtown Motor Hotel: a, view to the north; b, view to the east.



a



b

Figure 3. Views of the Downtown Motor Hotel: a, view to the southeast; b, view to the west.

Table 1  
TUCSON BASIN PREHISTORIC CHRONOLOGY

| Periods            | Phases   | Date Ranges   |
|--------------------|--|---|
| Hohokam Classic    | Tucson<br>Tanque Verde                                   | A.D. 1300-1450<br>A.D. 1150-1300                                    |
| Hohokam Sedentary  | Late Rincon<br>Middle Rincon<br>Early Rincon             | A.D. 1100-1150<br>A.D. 1000-1100<br>A.D. 950-1000                   |
| Hohokam Colonial   | Rillito<br>Cañada del Oro                                | A.D. 850-950<br>A.D. 750-850  |
| Hohokam Pioneer    | Snaketown  | A.D. 700-750  |
| Early Ceramic      | Tortolita<br>Late Agua Caliente<br>Early Agua Caliente   | A.D. 500-650/700<br>A.D. 350-500<br>A.D. 50-350                     |
| Early Agricultural | Late Cienega<br>Early Cienega<br>San Pedro<br>Unnamed    | 400 B.C.-A.D. 50<br>800-400 B.C.<br>1200-800 B.C.<br>2100-1200 B.C. |
| Archaic            | Chiricahua<br>Occupation gap?<br>Sulphur Springs-Ventana | 3500-2100 B.C.<br>6500-3500 B.C.<br>7500-6500 B.C.                  |
| Paleoindian        |  | 11,500?-7500 B.C.   |

Human occupation of the area began with a long and relatively stable lifeway that was based on the hunting and gathering of native animal and plant foods. This form of subsistence adaptation continued relatively unchanged for a period of many thousand years. Around A.D. 200 to 300, a new agricultural-based culture developed that was based on a farming economy and a sedentary way of life.



## Paleoindian and Archaic Periods

The earliest period of culture history in southern Arizona is the Paleoindian, which has come to signify hunting and gathering cultures of late Pleistocene and early Holocene age. The Clovis tradition, an apparently distinct Paleoindian hunting-gathering culture that focused on the exploitation of now-extinct megafauna, has been recognized from approximately 11,500 to 7,500 B.C. in southern Arizona. Although Clovis culture is well documented in the San Pedro River Valley in southeastern Arizona (Faught and Freeman 1998:42; Haury et al. 1959; Haynes 1973; Hemmings 1970), elsewhere generally only isolated Clovis points have been found (Haynes 2007; Haynes and Huckell 2007; Whittlesey et al. 1994). In the Tucson Basin, Clovis points have been recovered from the Valencia Site, AZ BB:13:15 (ASM) (Doelle 1985), in Saguaro National Park East (Simpson and Wells 1984), and in the Tucson Mountains and Avra Valley (Huckell 1984). The current lack of evidence for Clovis occupation in much of southern Arizona may be misleading due to a number of factors, including geological preservation and the presence of later prehistoric occupations, which may be obscuring the evidence for earlier cultures.

The next period of culture history in southern Arizona is the Archaic, which is associated with a variety of hunting-gathering, largely preceramic, and, for the most part, nonagricultural, cultures that employed milling stone technology and were ancestral to many of the better-known agricultural societies. The Archaic period may be characterized as a time of increasing sophistication in hunting and gathering techniques through both technological development and the evolution of ever more complex subsistence-settlement systems, in conjunction with a gradually increasing dependence upon floral food resources. A transition to a partial reliance on agriculture accompanied population growth and the development of more sedentary settlement patterns.

Two broad traditions have been associated with the Archaic period in southern Arizona: the Cochise culture, first defined in the San Pedro, Sulphur Spring, and San Simon valleys of southeastern Arizona (Sayles 1983; Sayles and Antevs 1941); and the Amargosa Complex, initially identified in the Mohave Desert of California and adjacent parts of the Great Basin (Haury 1950; Hayden 1970, 1976; Rogers 1966). The Archaic period generally is estimated at about 8000 to 1200 B.C. in the Southwest, although the terminal date varies considerably from one place to another (Huckell 1996). The long temporal span of the Early and Middle Archaic periods encompasses several major economic and settlement pattern changes, much of which was based on climatic fluctuations that led to hunting-gathering strategies focused on small game and locally available plant resources. The proliferation of ground stone tools during the Early and Middle Archaic periods is indicative of a major subsistence change from a focus on big-game hunting and plant gathering with little to no processing to more extensive and intensive plant procurement and processing (Frat 1992:19). By the Middle Archaic, artifact assemblages from southern Arizona sites are characterized by large numbers of projectile points and slab metates, and the introduction of basin metates, mortars, and pestles. Early evidence of maize also has been documented at Middle Archaic sites in the Tucson area, including Los Pozos (AZ AA:12:91 [ASM]) and Las Capas (AZ AA:12:111 [ASM]), and in downtown Tucson (Gregory 1999; Thiel and Mabry 2006; Whittlesey et al. 2007).

Investigations in the Tucson Basin (e.g., Mabry 1998) have established that the Archaic period was succeeded by an Early Agricultural period (2100 B.C. to A.D. 50), during which time

domesticated plant species, such as maize, were first cultivated in the Greater Southwest, and substantial settlement began in the Santa Cruz River floodplain (Mabry 2007a, 2007b; Thiel and Diehl 2006). In the Tucson Basin, excavations at the Milagro Site (AZ BB:10:46 [ASM]) and Las Capas determined that the San Pedro phase of the Early Agricultural period was characterized by relatively small domestic structures with small, interior bell-shaped storage pits, nonutilitarian items, utilitarian seed milling equipment, maize cultivation, and irrigation, all of which are indicative of an increased level of sedentism (Huckell et al. 1995; Huckell and Huckell 1984; Mabry 2008; Whittlesey et al. 2007). By the early and late Cienega phases, large, shallow pit structures (possibly communal houses), large, extramural bell-shaped storage pits, and large, open plazalike areas appear in the Tucson Basin. These larger structures and features suggest yet another increase in sedentism over the preceding Early and Middle Archaic periods (Huckell 1990; Mabry 1998, 2007b). Almost year-round occupation of the larger sites, including Santa Cruz Bend (AZ AA:12:746 [ASM]) and Los Pozos, is indicated by the sites' architecture, artifact assemblages, archaeobotanical remains, and clear evidence of the planned organization of space (Gregory 2001; Mabry 1998).

Succeeding the Early Agricultural period was the Early Ceramic period (A.D. 50 to 500), which precedes the beginning of the recognizably Hohokam Pioneer period around A.D. 500. The Early Ceramic period is characterized by the initial production of pottery, the formalization of architectural features, and increased reliance on agriculture and it is a transitional period between the Early Agricultural and Hohokam Pioneer periods. Architecture during the Early Ceramic period evidences a formalization of previous building techniques with the appearance of true houses-in-pits, entryways flanked by adobe pillars that supported entry posts, and formal, plastered hearths centered on the entryway (Wallace and Lindeman 2003:Table 4.1). The Early Agricultural nonrandom organization of space within a community continues during the Early Ceramic period as seen by the presence of discrete courtyard groups, plazas, and large communal houses. A number of Early Ceramic period sites have been investigated throughout the Tucson Basin, including the Lonetree Site (AZ AA:12:120 [ASM]), Square Hearth Site (AZ AA:12:745 [ASM]), Stone Pipe Site (AZ BB:13:425 [ASM]), Dairy Site (AZ AA:12:285 [ASM]), Houghton Road Site (AZ B:1:393 [ASM]), and the Cortaro Site (AZ AA:12:232 [ASM]) (Ciolek-Torrello 1995; Fish et al. 1992; Hesse and Lascaux 2005; Mabry et al. 1997; Slawson et al. 1986).

## Hohokam Period

The final prehistoric period of culture history in the Tucson Basin is that of the Hohokam, which can be broadly summarized in terms of the pre-Classic Pioneer, Colonial, and Sedentary periods, and the subsequent Classic period, and also is referred to as the Formative period. The Phoenix, or Salt-Gila, Basin generally is recognized as a core or central area for the Hohokam culture, and it was there that a chronology for the Hohokam first was established. Although the Hohokam chronology follows an established sequence of periods and phases, various estimates have been generated for the temporal placement of each period and phase, and it is apparent that they have differed from one place to another within the larger Hohokam region. The terms *Pioneer*, *Colonial*, *Sedentary*, and *Classic* represent broad developmental periods in the prehistory of the Hohokam.

The pre-Classic Hohokam had a more complex social organization than previous Archaic peoples, and they lived in permanent, *rancheria*-style or regularly patterned pit house village

settlements. Some settlements held a preeminent sociopolitical and economic status that was characterized by ballcourts, plazas, and large mounds, as has been documented in the Tucson Basin by research at the Marana Community in the northern basin (Fish et al. 1992). The mounds, which initially were constructed during the Pioneer period and grew in size and complexity in each succeeding period, often supported small shrines or ritual structures by the end of the pre-Classic sequence. Seasonal settlements also existed with cultivated fields along perennial streams, their floodplains, and major seasonal washes, in addition to a variety of specialized resource procurement and processing sites. The pre-Classic Hohokam maintained highly developed relationships with distant societies and cultures, primarily through means of trade networks. The trade networks also linked both neighboring and widely distributed Hohokam settlements.

Technologically sophisticated canal irrigation systems were extant throughout the Phoenix Basin along the Salt and Gila rivers, in addition to floodwater, runoff, and dry-farming techniques that were used in areas where canal irrigation was not possible. In the Tucson Basin, horticulture was practiced with water conservation, capture, and redistribution techniques that included earth-and-brush berms with rudimentary ditches or small canals, stone checkdam features, earth-and-stone piles, small terraces, and various other runoff and dry-farming techniques, which were adapted to the diverse microenvironments provided by piedmont slopes and the riparian floodplains (Slawson 1994:83).

The Classic period is widely regarded as having departed in several respects from traditions dating back through the Sedentary, Colonial, and Pioneer periods. Of particular significance is that the Classic period brought an apparent contraction in the geographic distribution of sedentary settlements, resulting in the concentration of population into large, tightly integrated, cultural communities, and a dislocation or reformulation of trading patterns. In the Tucson Basin, the latter is implied by changes in the frequency and distribution of locally produced and intrusive ceramics, particularly decorated wares (e.g., significant decrease in the amount of buff ware imported from the Salt-Gila Basin compared to pre-Classic times). Other Classic period departures from earlier patterns included the construction of residences on massive, flat-topped platform mounds, the appearance of palisaded or walled village compounds that sometimes contained multistory buildings, the construction of *cerros de trincheras* or terraced hillside agricultural and habitation sites, and the eventual loss of ballcourt architecture.

The Hohokam settled in the Tonto Basin early in the Colonial period, with continued occupation into the Sedentary period (Doyel 1978:91). At the beginning of the Classic period, or approximately A.D. 1150, new cultural attributes, which have been defined as Salado, appeared in the Tonto Basin and the nearby Globe/Miami area (Hohmann and Kelly 1988:30). By A.D. 1300, Salado cultural attributes were distributed throughout a wide area in the Southwest, including the Tucson Basin, Phoenix Basin, San Pedro River Valley, western New Mexico, western Texas, and Casas Grandes, Mexico (Doyel and Haurly 1976:133; Hohmann and Kelly 1988:30).

The Salado were characterized by a hierarchical site-settlement system and extensive regional and local exchange within a centralized redistributive framework; their sites typically consisted of compounds and pueblo complexes that may have been contemporaneous. Distinctive polychrome ceramics and burial practices that emphasized inhumation rather than cremation also are associated with the Salado phenomenon. According to Nelson and LeBlanc (1986:6), the appearance of Salado polychromes in any particular area frequently was accompanied by changes in the local architecture, community organization, and burial practices. However, because the observation of each change is dependent on the preceding conditions in an

area, no single description can be made of these cultural changes. Consequently, Salado cultural attributes have been viewed as constituting a polythetic set that is difficult to define or describe at an interregional level (Rice 1990:27).

Around A.D. 1450, or perhaps somewhat later, the terminal Classic period marked the effective demise of complexly integrated Hohokam societies, which resulted in the abandonment of most Hohokam sites. The collapse of the Hohokam also may have effected the abandonment of the Salado pueblos at this time. However, several aspects of Hohokam culture are thought to have survived this collapse, and the remnant population may have been ancestral to various Piman-speakers of the protohistoric-early historic era. Reasons for the end of the Classic period are not fully understood, and the succeeding prehistoric, protohistoric, and early historic occupations remain only partially defined. A variety of sources, from Spanish documents to recent historical, ethnographical, and archaeological studies, portray a late Classic/early post-Classic situation of ethnic and linguistic diversity that later gave way to dominance by the Sobaipuri—a generic term applied by the early Spaniards to Piman-speakers of the Santa Cruz and San Pedro river valleys (Masse 1981:38).

### Protohistoric Period

Whether or not a cultural hiatus existed between the late Classic period and the post-Classic or Protohistoric period has yet to be definitively determined. Furthermore, questions have been raised regarding the cultural attributes that have been used to define the Protohistoric period, its time span, the possibility of a demonstrable continuum between prehistoric and protohistoric populations (i.e., Hohokam and Pima or Tohono O'odham), and whether a Protohistoric period even occurred in southern Arizona. Much of the Protohistoric research in southern Arizona focuses on the nature of late Classic period Hohokam society, reasons and dates for the collapse, and the ethnic-linguistic origins of Sobaipuri, Pima, and Papago (Tohono O'odham) populations. Limitations on various attempts to address these matters stem partly from the fact that historical documentation began in the early 1690s (Doelle 1984:202), whereas archaeological data for the 1450 to 1690 eras are rare and often contradict some of the documentary evidence.

According to Ravesloot and Whittlesey (1987:81), who provide an excellent overview of the protohistoric problem, this transitional period between prehistory and history traditionally has been defined in terms of time, material remains, or culture change. The most frequent definitions seen in the literature are those of time, of which A.D. 1450 to 1700 may be the most common. This is the time range that is proposed by Wilcox and Masse (1981:14), who base their beginning date on the consensus that Southwestern prehistory ends around A.D. 1450, and their ending date on the extension of the Spanish mission system into southern Arizona in the 1680s through 1690s and the reconquest of the Pueblos by the Spaniards in the 1690s. However, Ravesloot and Whittlesey (1987:83) make an important point that the Protohistoric period must end at the time of continuous occupation by, or continuous contact with, Europeans; thus, the ending date will not be the same throughout the Southwest.

## Historic Period

Although the first documented European contacts in southern Arizona were expeditions led by Melchior Díaz in 1539, Francisco Vázquez de Coronado in 1540, and Padre Eusebio Francisco Kino in 1697, only limited and indirect European influence occurred. The historic period in southern Arizona effectively dates from the late seventeenth century, when it became a part of the northern frontier of New Spain. During the first half of the 1700s, the Jesuits established a system of *cabaceras* (head missions) and dependent *visitas* in the Santa Cruz Valley and adjacent areas, like that which the Franciscans had established in New Mexico, to the east. By 1752, the military *cordón*, or line of presidios, defending northern New Spain included garrisons at Tubac on the Santa Cruz and at Terrenate, at the headwaters of the San Pedro. In 1775, in order to provide more effective protection against Apache raids, the cordón was realigned and the presidial garrisons of Tubac, Terrenate, and Fronteras were moved to new sites located farther north: San Agustín del Tucón (within the present city of Tucson), Santa Cruz de Terrenate (on the San Pedro south of the present town of Benson), and San Bernardino, respectively (Officer 1987). Tucson's presidio survived, but the isolated positions of the other two new presidios proved untenable, and they were abandoned in 1779-1780 (Officer 1987). In 1787, Spanish authorities instituted a policy of offering inducements for Apache bands to sue for peace, a strategy that proved relatively successful, such that it was continued in the early years of the Mexican Republic, after the achievement of independence in 1821. During this time, a number of applications for land grants in southern Arizona and northern Sonora were approved. All of these grants were large cattle ranching operations (Officer 1987). This first period of southern Arizona history is defined as the Spanish Colonial period, and it spans the years from 1539 to 1821.

The subsequent period, known as the Mexican period, began in 1821 and continued through 1854. The first known Americans to travel southern Arizona were fur trappers, among whom Sylvester and James Pattie, who conducted several expeditions in the Gila River Valley during the late 1820s, are the best known (Wagoner 1975:243-245). The Apache resumed raiding in the late 1820s, but such incidents were sporadic until 1831, when the insolvency of the government in Mexico City forced it to curtail the Apache rationing program (Officer 1987; Sheridan 1995). From this time, the Hispanic frontier was the scene of constant conflict with the Apache, who were now obtaining arms from Anglo-American traders (paid for with stolen Mexican livestock) (Officer 1987). Settlements along the Santa Cruz River survived, but to the east the fortified *ranchos* of the San Bernardino grant and those along the San Pedro River had to be abandoned.

The Mexican War of 1846 to 1848 brought federal troops into southern Arizona for the first time, including General Stephen W. Kearny who commanded the Army of the West along the Gila Trail in November, 1848 (Wagoner 1975:264). The route, which would come to be known as Cooke's Wagon Road, passed through Guadalupe Pass into southeastern Arizona, then turned north to follow the San Pedro. The war was officially ended on February 2, 1848, with the signing of the Treaty of Guadalupe Hidalgo (or Treaty of La Mesilla), which ceded lands north of the Gila River to the United States (Wagoner 1975:276). The subsequent discovery of gold in California resulted in the passage of many Anglo-Americans through the area on the Gila Trail, which followed Cooke's Road at this point.

With the Gadsden Purchase of 1853, the rest of present-day Arizona became United States territory, and a series of military forts was developed, transportation systems were improved, and Anglo-American immigration increased. This was the beginning of the U.S. period, which began in 1854 and continues to the present day. Population growth in the west began with the signing of the Homestead Act of 1862, which allowed the filing of claims on recently acquired government lands. As a result, between 1880 and 1900, population doubled in the Southwest, doubling once again from 1900 to 1920 (Meinig 1971:52, 83). The 1880s were boom years for the cattle industry, but the 1890s witnessed the results of overstocking combined with a major drought; as Sheridan (1995:141) notes, “[i]t was a disaster of biblical proportions, one in which nature and greed conspired to magnify their individual effects. Cattle died like flies all over the territory, but the losses were greatest in southern Arizona, where 50 to 75 percent of all animals perished.”

The increase in the local labor force, in conjunction with the availability of inexpensive transportation in the form of the railroads, made the mining of Arizona’s large low-grade copper deposits profitable for the first time, resulting in a series of copper mining booms beginning in the 1870s (Teague 1980:9). Silver and gold mining followed a similar pattern. In 1872, new opportunities for mining occurred with the Mining Act of 1872, which provided for the “disposition of all its mineral lands by location and patent” (Clark and Verity 1986:1). Although several subsequent changes to the law occurred over time, its underlying purpose to open lands for mineral exploration has remained constant (Ayres et al. 1992:32; Karpiscak and Wright 1991:102; Keane and Rogge 1992:17). However, the mining boom was relatively short-lived, lasting approximately from 1880 to 1915, with depressions occurring in 1883 and 1902 (Feil 1968:81, 91). A resurgence in mining, particularly gold mining, occurred during the Great Depression as miners reworked nineteenth century placers (Keane and Rogge 1992:53). With the advent of World War II, however, gold speculation ceased for the time being due to the need to prospect for “strategic minerals” necessary for the war effort (e.g., copper, iron, tin, tungsten, zinc, bauxite). The 1939 Strategic Minerals Act passed by Congress authorized the U.S. Bureau of Mines and the U.S. Geological Survey to accelerate prospecting for the strategic minerals. Not only were silver and gold not on the strategic mineral list, but also all gold mines in Arizona were closed in 1942 by the federal government (Goudy 1987:155; Keane and Rogge 1992:54).

## **Methodology**

Tasks completed during this project involved archival investigations (Class I overview) and a property visual assessment, which was conducted November 12-17, 2014. Information obtained during the records search is provided in Tables 2 through 4.

Survey and site records from the Arizona State Museum (ASM) were reviewed for pertinent information, historic General Land Office maps of the project area were obtained from the Bureau of Land Management Public Room in Phoenix, and the AZSITE and National Register of Historic Places (NRHP) databases were consulted online. The AZSITE database includes records from the Arizona State Museum, Arizona State Historic Preservation Office, Arizona State University, Museum of Northern Arizona, Bureau of Land Management, and U.S. Department of the Interior.

Table 2

## Previous Archaeological Surveys Within 1 Mile of the Project Area

| Agency No.   | Reference  | Site(s) Investigated  |
|--------------|--|---|
| 1955-3.ASM   | Komerska, Robert, and David Breternitz<br>1955 Archaeological Survey for Engineering Management, Inc.: Yuma and Eastward for Southern Pacific Pipeline. Ms. on file, Arizona State Museum, University of Arizona, Tucson.                  | AZ Q:15:1-24;<br>AZ Q:16:1-43;<br>AZ W:4:1-31;<br>AZ W:8:1-6 (ASM)  |
| 1979-38.ASM  | Betancourt, Julio<br>1979 <i>Cultural Resources Within the Proposed Santa Cruz Riverpark Archaeological District</i> . Archaeological Series No. 125. Arizona State Museum, University of Arizona, Tucson.                                 | AZ AA:12:44, 46, 56, 85,<br>90, 93, 95-96, 99, 103-<br>107;<br>AZ BB:13:15, 19-21, 23,<br>55, 56, 74, 86-111(ASM) |
| 1980-155.ASM | Adams, Rex, Lisa Huckell, and Susan Brew<br>1980 Santa Cruz/SW Interceptor Project. Ms. on file, Arizona State Museum, University of Arizona, Tucson.  | AZ BB:12:122 and 134 (ASM)  |
| 1981-52.ASM  | Urban, Sharon F.<br>1981 Survey of Villas del Rey Apartments. Ms. on file, Arizona State Museum, University of Arizona, Tucson.  | None  |
| 1983-6.ASM   | Urban, Sharon F.<br>1983 Survey of Las Brisas Condominiums. Ms. on file, Arizona State Museum, University of Arizona, Tucson.  | None  |
| 1983-67.ASM  | Urban, Sharon F.<br>1983 Survey of La Entrada. Ms. on file, Arizona State Museum, University of Arizona, Tucson.   | None  |
| 1984-60.ASM  | Brew, Susan<br>1984 An Archaeological Clearance Survey of the Three Proposed Detention Basins in Tucson, Pima County, Arizona. Ms. on file, Arizona State Museum, University of Arizona, Tucson.   | None  |
| 1984-209.ASM | Madsen, John<br>1984 Downtown Tucson Survey. Ms. on file, Arizona State Museum, University of Arizona, Tucson.   | None  |
| 1987-141.ASM | Euler, Thomas R.<br>1987 An Archaeological Clearance Survey of the Proposed Central Arizona Project East, Phase I Design Water Pipeline Alignment, Pima County, Arizona. Ms. on file, Arizona State Museum, University of Arizona, Tucson. | None  |
| 1990-77.ASM  | Mabry, Jonathan<br>1990 <i>Archaeological Survey of Community Center Reclaimed Water Main Alignment</i> . Letter Report No. 90-121. Desert Archaeology, Tucson.  | None  |

Table 2 (continued)

## Previous Archaeological Surveys Within 1 Mile of the Project Area

| Agency No.   | Reference  | Site(s) Investigated |
|--------------|--|----------------------|
| 1990-163.ASM | Mabry, Jonathan<br>1990 <i>Expansion Project Survey</i> . Letter Report No. 90-119. Desert Archaeology, Tucson.  | None                 |
| 1991-109.ASM | Slawson, Laurie V.<br>1991 A Cultural Resources Inventory for 11 CAP Pressure Regulating Valve Station Sites in Tucson, Pima County, Arizona. Ms. on file, Cultural & Environmental Systems, Inc., Tucson. | None                 |
| 1991-180.ASM | Eppley, Lisa<br>1991 <i>Archaeological Survey of Tucson Community Center Parking Expansion Project</i> . Letter Report No. 91-141. Desert Archaeology, Tucson.   | None                 |
| 1991-181.ASM | Mabry, Jonathan<br>1991 <i>Archaeological Survey and Records Check of Lots 2 and 3, Block 94, Tucson</i> . Letter Report No. 91-122. Desert Archaeology, Tucson.   | None                 |
| 1992-213.ASM | Levi, Laura<br>1992 <i>Occupation History along Tucson's 3rd Avenue "A" Zone</i> . Letter Report No. 93-101. Desert Archaeology, Tucson.   | None                 |
| 1992-214.ASM | Swartz, Deborah<br>1992 <i>Archaeological Survey of the Ochoa School Reclaimed Water Main</i> . Letter Report No. 92-121. Desert Archaeology, Tucson.  | None                 |
| 1992-219.ASM | Eppley, Lisa<br>1992 <i>Archaeological Survey of South Tucson Southern Heights Subdivision and Home Addition Subdivision</i> . Letter Report No. 92-102. Desert Archaeology, Tucson.                       | None                 |
| 1992-231.ASM | Eppley, Lisa<br>1992 <i>Archaeological Survey of Build a Home Site 5</i> . Letter Report No. 92-114. Desert Archaeology, Tucson.   | None                 |
| 1993-158.ASM | Thiel, Homer<br>1993 <i>An Archaeological Survey at the Intersection of Broadway, Toole, and 4th Avenues</i> . Letter Report No. 93-125. Desert Archaeology, Tucson.                                       | None                 |
| 1993-164.ASM | Thiel, Homer<br>1993 <i>An Archaeological Survey at 841 and 851 South 9th Avenue</i> . Letter Report No. 93-140. Desert Archaeology, Tucson.   | None                 |



Table 2 (continued)

## Previous Archaeological Surveys Within 1 Mile of the Project Area

| Agency No.   | Reference  | Site(s) Investigated       |
|--------------|--|----------------------------|
| 1993-235.ASM | Thiel, Homer<br>1993 An Archaeological Survey and Archival Study of the Samuel H. Drachman Elementary School Property. Ms. on file, Desert Archaeology, Inc., Tucson.  | None                       |
| 1994-318.ASM | Freeman, Andrea K. L.<br>1994 <i>Archaeological Survey of the Santa Cruz River Bikepath from Speedway Boulevard to Mission Lane, Tucson, Arizona.</i> Letter Report No. 94-141. Desert Archaeology, Tucson.                                      | None                       |
| 1995-67.ASM  | Freeman, Andrea K. L.<br>1995 <i>Archaeological Survey of a Proposed Storm Drain Along Alameda Avenue, Tucson, Arizona.</i> Letter Report No. 95-116. Desert Archaeology, Tucson.  | None                       |
| 1995-84.ASM  | Diehl, M.<br>1992 <i>Archaeological Investigations of the Rio Nuevo South Property, City of Tucson, Arizona.</i> Technical Report No. 96-5. Desert Archaeology, Tucson.  | AZ BB:13:482 and 483 (ASM) |
| 1995-329.ASM | Swartz, Deborah<br>1995 <i>An Archaeological Survey near Osborn and 23rd Streets.</i> Letter Report No. 95-149. Desert Archaeology, Tucson.  | None                       |
| 1995-378.ASM | Tompkins, Charles<br>1995 <i>Results of Archaeological Monitoring of Two Handholes on Scott Street Between Alameda Street and Pennington Street, Downtown Tucson, Arizona.</i> Technical Report No. 95-29. Tierra Right-of-Way Services, Tucson. | None                       |
| 1995-392.ASM | Swartz, Deborah<br>1995 <i>An Archaeological Survey of Three Locations Between Speedway and Ajo Roads.</i> Letter Report No. 96-103. Desert Archaeology, Tucson.   | None                       |
| 1995-464.ASM | Thompkins, Charles<br>1995 <i>Results of Archaeological Monitoring of Fiber Optic Line Access Boxes in the Historic District of Tucson, Arizona.</i> Technical Report No. 95-25. Tierra Archaeological & Environmental Consultants, Tucson.      | None                       |
| 1995-465.ASM | Thompkins, Charles<br>1995 <i>Results of Archaeological Monitoring of Trenches for Fiber Optic Lines on Court Avenue, Downtown Tucson, Arizona.</i> Technical Report No. 95-31. Tierra Archaeological & Environmental Consultants, Tucson.       | None                       |

Table 2 (continued)

## Previous Archaeological Surveys Within 1 Mile of the Project Area

| Agency No.   | Reference  | Site(s) Investigated |
|--------------|--|----------------------|
| 1995-466.ASM | Tompkins, Charles<br>1995 <i>Results of Archaeological Monitoring of Trenches for Fiber Optic Lines on Alameda and Grossetta Streets Downtown, Tucson, Arizona.</i> Technical Report No. 96-15. Tierra Right-of-Way Services, Tucson.                      | None                 |
| 1996-47.ASM  | Lorentzen, Leon<br>1996 <i>Archaeological Monitoring of a Utility Line Installation Trench Across 17th Street to the Residence at 300 West 17th Street, Tucson, Arizona.</i> Letter Report No. 97-116. Desert Archaeology, Tucson.                         | None                 |
| 1996-75.ASM  | Lenhart, Austin<br>1996 Results of the Archaeological Monitoring of the ACSI Fiber Optics Installation, at the Intersection of Scott and Alameda Downtown, Tucson, Arizona. Ms. on file, Tierra Right-of-Way Services, Ltd., Tucson.                       | None                 |
| 1996-76.ASM  | Lenhart, Austin<br>1996 Results of the Archaeological Monitoring of the ACSI Fiber Optics Installation, at the Intersection of Scott and Alameda Downtown, Tucson, Arizona. Ms. on file, Tierra Archaeological & Environmental Consultants, Ltd., Tucson.  | None                 |
| 1996-435.ASM | Thompkins, Charles<br>1996 <i>Results of Archaeological Monitoring of Trenches for Fiber Optic Lines on Alameda and Grossetta Streets Downtown, Tucson Arizona.</i> Technical Report No. 96-15. Tierra Archaeological & Environmental Consultants, Tucson. | None                 |
| 1996-480.ASM | Lindeman, Mike<br>1996 <i>Archaeological Monitoring at Sixteen Locations in the City of Tucson.</i> Letter Report No. 97-116. Desert Archaeology, Tucson.  | None                 |
| 1997-116.ASM | Lourdes, Aguila<br>1996 Archaeological Survey for Tucson Mission Industries, Tucson, Pima County, Arizona. Ms. on file, Archaeological Consulting Services, Ltd., Tempe.   | None                 |
| 1997-320.ASM | Stevens, Michelle<br>1997 <i>Archaeological Survey for the 22nd Street and I-10 Area Main Replacement Project.</i> Letter Report No. 97-157. Desert Archaeology, Tucson.   | None                 |

Table 2 (continued)

## Previous Archaeological Surveys Within 1 Mile of the Project Area

| Agency No.   | Reference   | Site(s) Investigated |
|--------------|---|----------------------|
| 1997-322.ASM | Thiel, Homer<br>1997 <i>Archaeological Survey of the 22nd Street/Santa Rita Main Replacement</i> . Letter Report No. 97-322. Desert Archaeology, Tucson.                    | None                 |
| 1998-16.ASM  | Thiel, Homer<br>1998 <i>Archaeological Survey of 318 East 13th Street: The George and Lena Roskruge House</i> . Letter Report No. 98-101. Desert Archaeology, Tucson.       | None                 |
| 1998-17.ASM  | Thiel, Homer<br>1998 <i>Archaeological Survey of 270 East 17th Street</i> . Letter Report No. 98-102. Desert Archaeology, Tucson.   | None                 |
| 1998-37.ASM  | Vint, James<br>1998 <i>Archaeological Survey for the 8th Street/Cherry Avenue Cast Iron Main Replacement</i> . Letter Report No. 98-114. Desert Archaeology, Tucson.        | None                 |
| 1998-38.ASM  | Vint, James<br>1998 <i>Archaeological Survey for the Broadway Boulevard/6th Avenue Cast Iron Main Replacement</i> . Letter Report No. 98-115. Desert Archaeology, Tucson.   | None                 |
| 1998-44.ASM  | Vint, James<br>1998 <i>Archaeological Survey Along South Park Avenue Between 36th and 19th Streets</i> . Letter Report No. 98-122. Desert Archaeology, Tucson.              | None                 |
| 1998-135.ASM | Thiel, Homer<br>1998 <i>An Archaeological Survey and Records Check of the Rio Nuevo South Parcel</i> . Letter Report No. 98-144. Desert Archaeology, Tucson.                | None                 |
| 1998-146.ASM | Diehl, Allison<br>1998 <i>An Archaeological Survey and Records Check for 1016 South 6th Avenue, Tucson, Arizona</i> . Letter Report No. 98-168. Desert Archaeology, Tucson. | None                 |
| 1998-266.ASM | Diehl, Allison<br>1998 <i>A Survey of 6th Avenue Between 18th Street and I-10</i> . Letter Report No. 98-170. Desert Archaeology, Tucson.                                   | None                 |
| 1998-271.ASM | Diehl, Alison<br>1998 <i>Archaeological Survey of Rio Nuevo Center Parcel, Tucson, Arizona</i> . Letter Report No. 98-177. Desert Archaeology, Tucson.                      | None                 |

Table 2 (continued)

## Previous Archaeological Surveys Within 1 Mile of the Project Area

| Agency No.   | Reference  | Site(s) Investigated |
|--------------|--|----------------------|
| 1998-311.ASM | Diehl, Allison<br>1998 <i>An Archaeological Survey of the Intersection of Broadway Boulevard and Park Avenue, Tucson, Arizona.</i> Letter Report No. 98-202. Desert Archaeology, Tucson.   | None                 |
| 1998-383.ASM | Diehl, Allison<br>1998 <i>An Archaeological Survey and Records Check for a Portion of Block 245, Tucson, Arizona.</i> Letter Report No. 98-192. Desert Archaeology, Tucson.  | None                 |
| 1998-568.ASM | Zaglauer, Brian<br>1998 Results of Archaeological Monitoring of a Fiber Optic Cable Installation Trench at 174 E. Tool Avenue in Downtown Tucson, Pima County, Arizona. Ms. on file, Tierra Right-of-Way Services, Ltd., Tucson. | None                 |
| 1999-99.ASM  | Diehl, Alison<br>1999 <i>Archaeological Survey for the University Boulevard and Sixth Avenue Cast Iron Main Rehabilitation Project, Tucson, Arizona.</i> Letter Report No. 99-128. Desert Archaeology, Tucson.                   | None                 |
| 1999-103.ASM | Wöcherl, Helga<br>1999 <i>An Archaeological Survey for the Installation of Water Service at 434 South Railroad Avenue, Tucson, Arizona.</i> Letter Report No. 99-131. Desert Archaeology, Tucson.                                | None                 |
| 1999-295.ASM | Gilman, Catherine<br>1999 <i>Archaeological Monitoring of a Congress Street Trench Line at Church Avenue, Tucson, Arizona.</i> Letter Report No. 99-107. Desert Archaeology, Tucson.   | None                 |
| 1999-341.ASM | Diehl, Allison<br>1999 <i>Cultural Resources Survey of Fourth Avenue Between Eight and Ninth Streets, Tucson, Arizona.</i> Project Report No. 99-170. Desert Archaeology, Tucson.  | None                 |
| 1999-342.ASM | Diehl, Allison<br>1999 <i>Cultural Resources Survey of Church Street Between Congress and Ochoa Street, Tucson, Arizona.</i> Project Report No. 99-171. Desert Archaeology, Tucson.  | None                 |

Table 2 (continued)

## Previous Archaeological Surveys Within 1 Mile of the Project Area

| Agency No.   | Reference   | Site(s) Investigated |
|--------------|---|----------------------|
| 1999-343.ASM | Diehl, Allison<br>1999 Cultural Resources Survey of a Parcel Between Meyer and Court Avenues at Sixth Street, Tucson, Arizona. Ms. on file, Desert Archaeology, Inc., Tucson.   | None                 |
| 1999-344.ASM | Diehl, Allison<br>1999 <i>Cultural Resources Survey of a Parcel at Meyer Avenue and 18th Street, Tucson, Arizona.</i> Project Report No. 99-174. Desert Archaeology, Tucson.  | None                 |
| 1999-346.ASM | Diehl, Allison<br>1999 <i>Cultural Resources Survey of the La Pilita Parcel in Barrio Libre, Tucson, Arizona.</i> Project Report No. 99-179. Desert Archaeology, Tucson.  | None                 |
| 1999-347.ASM | Diehl, Allison<br>1999 <i>Cultural Resources Survey of a Parcel at 1075 South Tenth Avenue, Tucson, Arizona.</i> Project Report No. 99-180. Desert Archaeology, Tucson.   | None                 |
| 1999-348.ASM | Diehl, Allison<br>1999 <i>Cultural Resources Survey for the CAP Transmission Main Access/Pumping Manhole Improvements, Tucson, Arizona.</i> Project Report No. 99-183. Desert Archaeology, Tucson.  | None                 |
| 1999-362.ASM | Dames & Moore<br>1999 Cultural Resources Inventory Report and Discovery/Monitoring Plan for Phase I of the Tucson Freeway Management System along Portions of Interstate 10, 19 and 19-B, Pima County, Arizona. Ms. on file, Dames & Moore, Phoenix.  | None                 |
| 1999-427.ASM | Stone, Lyle<br>1999 Cultural Resources Survey for the Proposed Fourth Avenue Design Section of the Barraza Aviation Parkway, Tucson, Pima County, Arizona. Ms. on file, Archaeological Research Services, Inc., Tempe.  | None                 |
| 1999-565.ASM | Dutt, Andrew<br>1999 <i>Results of Archaeological Monitoring at 250 S. Toole Avenue, Tucson, Arizona.</i> Project Report No. 99-135. Desert Archaeology, Tucson.<br><br>1999 <i>Results of Archaeological Monitoring in Barrio Libre S. Meyer Avenue, Tucson, Arizona.</i> Project Report No. 99-134. Desert Archaeology, Tucson. | None                 |

Table 2 (continued)

## Previous Archaeological Surveys Within 1 Mile of the Project Area

| Agency No.   | Reference  | Site(s) Investigated   |
|--------------|--|--|
| 1999-566.ASM | Zaglauer, Brian<br>2001 Results of Archaeological Monitoring of a Fiber Optic Cable Installation Trench near the Southeast Corner of Pennington Street and Church Avenue in Downtown Tucson, Pima County, Arizona. Tierra Archaeological & Environmental Consultants, Tucson.  | None   |
| 1999-569.ASM | Zaglauer, Brian<br>2001 Results of Archaeological Monitoring near the Intersection of Alameda Street and 6th Avenue in Downtown Tucson, Pima County, Arizona. Tierra Archaeological & Environmental Consultants, Tucson.   | None   |
| 1999-587.ASM | Doak, David<br>1999a <i>Archaeological Survey for a Proposed Fiber Optic Cable Line from Yuma to Phoenix, Arizona.</i> Cultural Resource Report No. 99-185. SWCA, Tucson.<br><br>1999b <i>An Archaeological Survey in Support of Permitting for a Proposed Fiber Optic Line from Phoenix, Arizona to the Arizona/New Mexico State Line.</i> Cultural Resource Report No. 99-72. SWCA, Tucson.<br><br>1999c <i>Archaeological Survey of the Vail Work Around Portion of a Proposed Fiber Optic Line Phoenix, to the Arizona/New Mexico State Line (Addendum).</i> Addendum to Cultural Resource Report No. 99-72. SWCA, Tucson.<br><br>1999d <i>Addendum to An Archaeological Survey in Support of Permitting for a Proposed Fiber Optic Line from Phoenix, Arizona, to the Arizona/New Mexico State Line.</i> Second Addendum to Cultural Resource Report No. 99-72. SWCA, Tucson.<br><br>2001 <i>Archaeological Testing and Monitoring of the Level 3 Fiber Optic Corridor, Southern Arizona.</i> Cultural Resource Report No. 99-343. SWCA, Tucson.<br><br>Hesse, India S.<br>2000 <i>An Archaeological Survey of Eight San Carlos Irrigation Project Canal Right-of-Ways for the Coolidge Fiber Optic Work-Around, Pinal County, Arizona.</i> Cultural Resources Report No. 99-280. SWCA, Tucson. | AZ T:13:122<br>AZ U:14:321-323<br>AZ AA:2:172<br>AZ AA:6:69<br>AZ BB:14:665, 657-659, and 672<br>AZ CC:10:96<br>AZ CC:12:44<br>AZ CC:13:48 (ASM) |

Table 2 (continued)

## Previous Archaeological Surveys Within 1 Mile of the Project Area

| Agency No.   | Reference   | Site(s) Investigated |
|--------------|---|----------------------|
| 2000-158.ASM | Thiel, Homer<br>2000 <i>An Archaeological Survey and Testing Plan for the La Entrada Parcel, Tucson, Arizona.</i> Letter Report No. 00-125. Desert Archaeology, Tucson.   | None                 |
| 2000-211.ASM | Sigler, Jennifer, and Lee Fratt<br>2000 <i>Results of Archaeological Monitoring of Fiber Optic Cable Trenches on Alameda St., Grosetta Avenue, and Scott Avenue in Downtown Tucson, Pima County, Arizona.</i> Technical Report No. 1999-25A. Tierra Archaeological & Environmental Consultants, Tucson. | None                 |
| 2000-284.ASM | Diehl, Allison Cohen<br>2000 <i>Cultural Resources Survey for the Moratorium Street Cast Iron Main Rehabilitation Project, Tucson, Pima County, Arizona.</i> Letter Report No. 00-134. Desert Archaeology, Tucson.  | None                 |
| 2000-287.ASM | Diehl, Allison Cohen<br>2000 <i>Cultural Resources Survey of Granada Avenue Between Paseo Redondo and Calle Arruza, Tucson, Pima County, Arizona.</i> Project Report No. 00-142. Desert Archaeology, Tucson.  | None                 |
| 2000-292.ASM | Diehl, Allison Cohen<br>2000 <i>Archaeological Survey of the Tucson Center for the Performing Arts Property, Tucson, Pima County, Arizona.</i> Project Report No. 00-146. Desert Archaeology, Tucson.   | None                 |
| 2000-412.ASM | Duff, Andrew L.<br>2000 <i>An Archaeological Survey of Four Proposed Well Locations in Tucson, Arizona.</i> Project Report No. 00-116. Desert Archaeology, Tucson.  | None                 |
| 2000-568.ASM | Brack, M. L.<br>2000 <i>A Cultural Resources Survey of 7 Acres near 22nd Street and US Interstate 10, Tucson, Pima County, Arizona.</i> Letter Report No. 00-157. Desert Archaeology, Tucson.   | None                 |
| 2000-570.ASM | Brack M. L.<br>2001 <i>A Cultural Resources Survey of 18 Acres of Santa Cruz River Flood Plain Along Starr Pass Boulevard, Tucson, Pima County, Arizona.</i> Letter Report No. 00-161. Desert Archaeology, Tucson.  | None                 |

Table 2 (continued)

## Previous Archaeological Surveys Within 1 Mile of the Project Area

| Agency No.                           | Reference  | Site(s) Investigated  |
|--------------------------------------|--|---|
| 2000-719.ASM                         | Zaglauer, Brian<br>2000 Results of Archaeological Monitoring of Fiber Optic fable Installation Trenches in Downtown Tucson, Pima County, Arizona. Ms. on file, Tierra Right of Way Services, Ltd., Tucson.   | None  |
| 2000-723.ASM/<br>SHPO. No. 2000-1717 | Keane, Melissa, T. J. Lennon, J. Jones, and S. F. Mehls<br>2000 <i>An Archaeological Survey of Three of the AT&amp;T NexGen/Core Project, Arizona and California.</i> Report No. WCRM(F)179. Western Cultural Resource Management, Farmington.                             | AZ T:12:116;<br>AZ U:16:299;<br>AZ AA:3:209;<br>AZ AA:7:462;<br>AZ AA:12:299, 370, 382, and 858-859 (ASM) |
| 2000-765.ASM/<br>SHPO 2001-2228      | Fuller, Megan S., and William Barrera Jr.<br>2001 Cultural Resource Assessment of Two Tucson Streets in the Proposed Hope VI Redevelopment District, Pima County, Arizona. Ms. on file, Engineering and Environmental Consultants, Tucson.                                 | None  |
| 2001-41.ASM                          | Brack, M. L.<br>2001 <i>A Cultural Resources Evaluation of Four Construction Sites and Associated with the Clearwell Transmission Main, Tucson, Pima County, Arizona.</i> Project Report No. 01-104. Desert Archaeology, Tucson.   | None  |
| 2001-139.ASM                         | Brack, M. L.<br>2001 <i>A Cultural Resources Assessment of Block 42 of Buell's Addition, Tucson, Pima County, Arizona.</i> Project Report No. 01-112. Desert Archaeology, Tucson.  | None  |
| 2001-146.ASM                         | Diehl, Allison Cohen<br>2001 <i>Cultural Resources Survey of Lot 19 Rio Nuevo North Location Northwest of the Intersection of Bonita Avenue and Alameda Street, Tucson, Pima County, Arizona.</i> Project Report No. 02-114. Desert Archaeology, Tucson.                   | None  |
| 2001-591.ASM                         | Zaglauer, Brian, and John Hayes<br>2001 Archaeological Monitoring of a Trench Excavation in the Northwest Corner of Church Avenue and Broadway Boulevard in Downtown Tucson, Pima County, Arizona. Ms. on file, Tierra Archaeological & Environmental Consultants, Tucson. | None  |



Table 2 (continued)

## Previous Archaeological Surveys Within 1 Mile of the Project Area

| Agency No.   | Reference   | Site(s) Investigated |
|--------------|---|----------------------|
| 2001-629.ASM | Diehl, Allison Cohen<br>2001 <i>Cultural Resources Survey of 4th Avenue Between 22nd and 25th Streets, Tucson, Pima County, Arizona.</i> Project Report No. 01-153. Desert Archaeology, Tucson.   | None                 |
| 2001-683.ASM | Zaglauer, Brian<br>2002 Results of Archaeological Monitoring of an Emergency Gas Line Abandonment Project in Downtown Tucson, Pima County, Arizona. Tierra Archaeological & Environmental Consultants, Tucson.  | None                 |
| 2001-686.ASM | Zaglauer, Brian<br>2002 Results of Archaeological Monitoring near the Intersection of Scott Avenue and Alameda Street in Downtown Tucson, Pima County, Arizona. Tierra Archaeological & Environmental Consultants, Tucson.  | None                 |
| 2001-715.ASM | Smith, Matthew B., and Charles Wheeler<br>2001 <i>An Archaeological Survey of the Proposed South of Tucson Reroute Addendum 5 to An Archaeological Survey of the Arizona Portion of Link Two of the AT&amp;T NexGen/Core Project.</i> WCRM Report No. (F)228. Western Cultural Resource Management, Farmington. | AZ BB:13:679 (ASM)   |
| 2001-740.ASM | Zaglauer, Brian<br>2002 Results of Archaeological Monitoring near the Intersection of 6th and Toole Avenues in Downtown Tucson, Pima County, Arizona. Tierra Archaeological & Environmental Consultants, Tucson.  | None                 |
| 2001-757.ASM | Zaglauer, Brian<br>2002 Results of Archaeological Monitoring Along the Union Pacific Railroad Line in Downtown Tucson, Pima County, Arizona. Tierra Archaeological & Environmental Consultants, Tucson.   | None                 |
| 2002-95.ASM  | Diehl, Allison C.<br>2002 <i>A Cultural Resources Survey of South 6th Avenue Between 18th and 19th Streets, Tucson, Pima County, Arizona.</i> Project Report No. 02-108. Desert Archaeology, Tucson.  | None                 |
| 2002-98.ASM  | Diehl, Allison Cohen<br>2002 <i>Archaeological Monitoring near the Intersection of 6th and Main Street, Tucson, Pima County, Arizona.</i> Project No. 02-113. Desert Archaeology, Tucson.   | None                 |

Table 2 (continued)

Previous Archaeological Surveys Within 1 Mile of the Project Area

| Agency No.   | Reference  | Site(s) Investigated |
|--------------|--|----------------------|
| 2002-104.ASM | Zaglauer, Brian<br>2002 Results of Archaeological Monitoring at the Northwest Corner of Stone Avenue and Congress Street in Downtown Tucson, Arizona. Ms. on file, Tierra Archaeology and Environmental Consultants, Tucson.                   | None                 |
| 2002-249.ASM | Diehl, Allison Cohen<br>2002 <i>A Cultural Resources Survey of 25th Street Between 7th and 9th Avenues, Tucson, Pima County, Arizona.</i> Project Report No. 02-124. Desert Archaeology, Tucson.   | None                 |
| 2002-326.ASM | Diehl, Allison Cohen<br>2002 <i>Archaeological Monitoring for the Installation of a Water Main Near the Intersection of Stone Avenue and 16th Street, Tucson, Pima County, Arizona.</i> Project Report No. 02-155. Desert Archaeology, Tucson. | None                 |
| 2002-327.ASM | Diehl, Allison Cohen<br>2002 <i>Cultural Resources Survey on Church Street Between Pennington Street and Congress Street in Tucson, Pima County, Arizona.</i> Project Report No. 02-148. Desert Archaeology, Tucson.                           | None                 |
| 2002-365.ASM | Diehl, Allison Cohen<br>2002 <i>Cultural Resources Assessment of a Parcel Located at the Intersection of 22nd Street and 9th Avenue, Tucson, Pima County, Arizona.</i> Project Report No. 02-166. Desert Archaeology, Tucson.                  | None                 |
| 2002-372.ASM | Diehl, Allison Cohen<br>2002 <i>Cultural Resources Survey on 17th and 18th Streets Between Park and Plummer Avenue, Tucson, Pima County, Arizona.</i> Project Report No. 02-178. Desert Archaeology, Tucson.                                   | None                 |
| 2003-13.ASM  | Diehl, Allison Cohen<br>2003 <i>Archaeological Monitoring of a Electrical Line Installation on Ashberry Street, Tucson, Pima County, Arizona.</i> Project Report No. 02-193. Desert Archaeology, Tucson.                                       | None                 |
| 2003-36.ASM  | Diehl, Allison Cohen<br>2002 <i>Results of Archaeological Monitoring of an Electrical Installation on Main Avenue Between 6th and Washington Street, Tucson, Pima County, Arizona.</i> Project Report No. 02-139. Desert Archaeology, Tucson.  | None                 |

Table 2 (continued)

## Previous Archaeological Surveys Within 1 Mile of the Project Area

| Agency No.   | Reference  | Site(s) Investigated |
|--------------|--|----------------------|
| 2003-38.ASM  | Diehl, Allison Cohen<br>2002 <i>Results of Archaeological Monitoring for a Water Line Installation on Church Street Between Congress and Pennington Streets, Tucson, Pima County, Arizona.</i> Project Report No. 02-181. Desert Archaeology, Tucson.  | None                 |
| 2003-46.ASM  | Hall, Susan<br>2003 <i>Archaeological Monitoring of a Power Pole Installation on Meyer Street, Tucson, Pima County, Arizona.</i> Report No. 02-182. Desert Archaeology, Tucson.  | None                 |
| 2003-193.ASM | Hall, Susan D.<br>2002 <i>Archaeological Monitoring of a Conduct Trench near the State Parking Garage Entrance at Manning House Way, Tucson, Pima County, Arizona.</i> Report No. 02-180. Desert Archaeology, Tucson.  | None                 |
| 2003-248.ASM | Diehl, Allison Cohen<br>2003 <i>Cultural Resources Survey of South 10th Avenue Between 22nd and 43rd Streets, Tucson, Pima County, Arizona.</i> Project Report No. 03-112. Desert Archaeology, Tucson.   | None                 |
| 2003-384.ASM | Diehl, Allison Cohen<br>2003 <i>Cultural Resources Survey of a Parcel at 316 E. 25th Street in Tucson, Pima County, Arizona.</i> Project Report No. 03-120. Desert Archaeology, Tucson.  | None                 |
| 2003-423.ASM | Moses, James<br>2003 <i>Results of Archaeological Monitoring of a Gas Meter Installation at 44 North Stone Avenue in Downtown Tucson, Pima County, Arizona.</i> Archaeological Report No. 2003-20. Tierra Right of Way Services, Tucson.   | None                 |
| 2003-474.ASM | Hesse, Jerome S.<br>2003 <i>A Cultural Resource Survey of Ten Construction Sites Along EPNG Line 1007 in Pima &amp; Pinal Counties, Arizona</i> (Work Request No. PWE-AMM-044a). Cultural Resource Report No. 03-155. SWCA, Tucson.<br><br>Hesse, Jerome S., and Mark Chenault<br>2003 <i>A Cultural Resource Survey of 18 Construction Sites Along EPNG Line 1007 in Tucson, Pima County, Arizona.</i> (Work Request No. PWE-AMM-044a) Cultural Resource Report No. 03-174. SWCA, Tucson. | None                 |

Table 2 (continued)

## Previous Archaeological Surveys Within 1 Mile of the Project Area

| Agency No.   | Reference  | Site(s) Investigated |
|--------------|--|----------------------|
| 2003-506.ASM | Diehl, Alison<br>2003 <i>Cultural Resources Survey Along Stone Avenue Between 1st and 6th Streets, Tucson, Arizona.</i> Project Report No. 03-136. Desert Archaeology, Tucson.   | None                 |
| 2003-575.ASM | Diehl, Allison Cohen<br>2003 <i>Archaeological Monitoring of the Disconnection of a Water Line on Church Avenue Between Congress and Pennington Streets, Pima County, Arizona.</i> Project Report No. 03-141. Desert Archaeology, Tucson.  | None                 |
| 2003-585.ASM | Diehl, Allison Cohen<br>2003 <i>Cultural Resources Survey of Three Parcels in the Kroeger Lane Neighborhood, Tucson, Pima County, Arizona.</i> Project Report No. 03-148. Desert Archaeology, Tucson.  | None                 |
| 2003-586.ASM | Diehl, Allison Cohen<br>2003 <i>Cultural Resources Survey of Two Parcels in the Kroeger Lane Neighborhood, Tucson, Pima County, Arizona.</i> Project Report No. 03-147. Desert Archaeology, Tucson.  | None                 |
| 2003-593.ASM | DeJongh, Jennifer<br>2003 <i>Results of Archaeological Monitoring of a Gas Line Abandonment on Pennington Street Between Church and Stone Avenues, and a Gasline Replacement at 521 S. 5th Avenue in Downtown Tucson, Pima County, Arizona.</i> Archaeological Report No. 2003-57. Tierra Right-of-Way Services, Tucson. | None                 |
| 2003-893.ASM | Twilling, Shannon D.<br>2003 <i>A Class III Archaeological Survey Along North Scott Avenue Between East Alameda Street and Pennington Street in Tucson, Pima County, Arizona.</i> Report No. 03-36A. Harris Environmental Group, Tucson.   | None                 |
| 2003-894.ASM | Twilling, Shannon D.<br>2003 <i>A Class III Archaeological Survey in the El Presidio Historic District Along West Franklin Street Between North Granada Avenue and North Main Avenue, Tucson, Pima County, Arizona.</i> Project No. 03-36A. Harris Environmental Group, Tucson.  | None                 |

Table 2 (continued)

## Previous Archaeological Surveys Within 1 Mile of the Project Area

| Agency No.    | Reference   | Site(s) Investigated  |
|---------------|---|-----------------------|
| 2003-905.ASM  | Twilling, Shannon D.<br>2003 <i>Archaeological Monitoring Along North Scott Avenue Between Alameda Street and East Pennington Street in Tucson, Pima County, Arizona.</i> Report No. 03-43A. Harris Environmental Group, Tucson.  | None                  |
| 2003-960.ASM  | DeJongh, Jennifer<br>2003 <i>Results of Archaeological Monitoring of a Gas Line Abandonment on Grossetta Avenue Between Alameda and Council Streets in Downtown Tucson, Pima County, Arizona.</i> Archaeological Report No. 2003-59. Tierra Right-of-Way Services, Tucson.  | None                  |
| 2003-1070.ASM | Hesse, S. Jerome, and Anastacia E. Gutierrez<br>2004 <i>A Cultural Resources Inventory of the EPNG Lines 1007, 1008, and 1015 Across State Land Portions Within El Paso Corporation's 2003 Tucson Pipeline Integrity Project, Pima and Pinal Counties, Arizona.</i> Cultural Resources Report No. 2004-103. SWCA, Tucson. | AZ AA:7:508-515 (ASM) |
| 2003-1090.ASM | Ruble, Ellen C.<br>2003 <i>Results of Monitoring for a Sewer Line Repair at 419 W. Congress Street, Tucson, Pima County, Arizona.</i> Project Report No. 03-164. Desert Archaeology, Tucson.  | None                  |
| 2003-1091.ASM | Cook, Patricia<br>2003 <i>Cultural Resource Monitoring of Boreholes at the City Hall Annex, Tucson, Pima County, Arizona.</i> Project Report No. 03-165. Desert Archaeology, Tucson.  | None                  |
| 2003-1131.ASM | Doak, David P.<br>2003 <i>A Cultural Resource Assessment of a Historical Ice House in Tucson, Arizona.</i> Archaeological Report No. 2003-37. Tierra Right-of-Way Services, Tucson.   | AZ BB:13:721 (ASM)    |
| 2003-1334.ASM | Cook, Patricia<br>2003 <i>Cultural Resources Monitoring at 135 East Congress Street, Tucson, Pima County, Arizona.</i> Project Report No. 03-176. Desert Archaeology, Tucson.   | None                  |

Table 2 (continued)

## Previous Archaeological Surveys Within 1 Mile of the Project Area

| Agency No.    | Reference   | Site(s) Investigated |
|---------------|---|----------------------|
| 2003-1482.ASM | DeJongh, Jennifer<br>2003 <i>Results of Archaeological Monitoring of a Gas Line Installation and Valve Abandonment at 400 E. Toole Avenue in Downtown Tucson, Pima County, Arizona.</i> Archaeological Report No. 03-70. Tierra Archaeological & Environmental Consultants, Tucson.   | None                 |
| 2003-1490.ASM | Diehl, Allison Cohen<br>2003 <i>Cultural Resources Survey for the 3rd Avenue Manhole Project in Tucson, Pima County, Arizona.</i> Project Report No. 03-212. Desert Archaeology, Tucson.  | None                 |
| 2003-1496.ASM | Twilling, Shannon D.<br>2003 <i>A Class III Archaeological Survey at 300 W. Congress Street and 400 W. Congress Street, Tucson, Pima County, Arizona.</i> HEG Project No. 03-267. Harris Environmental Group, Tucson.   | None                 |
| 2003-1503.ASM | Urban, Sharon<br>2003 <i>Archaeological Monitoring Along Congress Street from the East Side of Pennington Street to the West Side of Granada Avenue, Downtown Tucson, Pima County, Arizona.</i> HEG Project No. 03-282. Harris Environmental Group, Tucson.   | None                 |
| 2003-1592.ASM | DeJongh, Jennifer<br>2002 <i>Results of Archaeological Monitoring of a Fiber Optic Installation Along W. Congress Street and the Intersection of Pennington Street and Stone Avenue in Downtown Tucson, Pima County, Arizona.</i> Archaeological Report No. 02-083A. Tierra Archaeological & Environmental Consultants, Tucson. | None                 |
| 2004-171.ASM  | Klune, Ingrid<br>2004 <i>Results of Archaeological Monitoring of a Gas Main Replacement and Gas Line Depth Recording on Congress Street Between the I-10 Frontage Road and Granada Avenue in Downtown Tucson, Pima County, Arizona.</i> Archaeological Report No. 2004-2. Tierra Right-of-Way Services, Tucson.                 | None                 |
| 2004-324.ASM  | Diehl, Allison Cohen<br>2003 <i>Cultural Resources Survey for the Corrosion Prevention Project, Tucson, Pima County, Arizona.</i> Project Report No. 04-118. Desert Archaeology, Tucson.  | None                 |

Table 2 (continued)

## Previous Archaeological Surveys Within 1 Mile of the Project Area

| Agency No.   | Reference   | Site(s) Investigated |
|--------------|---|----------------------|
| 2004-415.ASM | Hesse, Jerome S.<br>2004 <i>A Cultural Resources Survey Along Two Segments of the EPNG 1007 Pipeline in Tucson, Pima County, Arizona</i> . Cultural Resource Report No. 04-182. SWCA, Tucson.   | None                 |
| 2004-445.ASM | Klune, Ingrid<br>2004 <i>Results of Archaeological Monitoring of a Gas Main Location on the Corner of Franklin Street and Court Avenue in Downtown Tucson, Pima County, Arizona</i> . Report No. 2004-49. Tierra Right-of-Way Services, Tucson.                                       | None                 |
| 2004-463.ASM | Diehl, Allison Cohen<br>2004 <i>Cultural Resources Survey for Proposed Trolley Maintenance Facility Sites, Pima County, Arizona</i> . Project Report No. 04-127. Desert Archaeology, Tucson.  | None                 |
| 2004-481.ASM | Diehl, Allison Cohen<br>2004 <i>A Cultural Resources Survey for the Euclid-Park Bicycle and Pedestrian Bridge at Aviation Parkway, Tucson, Pima County, Arizona</i> . Project Report No. 04-126. Desert Archaeology, Tucson.  | None                 |
| 2004-575.ASM | Urban, Sharon F.<br>2004 <i>Monitoring of a 170-Foot-Long Trench in Support of an Underground Communications Line Expansion Project in Downtown Tucson, Pima County, Arizona</i> . HEG Project 04-122. Harris Environmental Group, Tucson.  | None                 |
| 2004-669.ASM | Diehl, Allison Cohen<br>2004 <i>Archaeological Monitoring at the City Courthouse Parking Lot, Tucson, Pima County, Arizona</i> . Project Report No. 04-172. Desert Archaeology, Tucson.   | None                 |
| 2004-679.ASM | Baker, Kathleen A.<br>2004 <i>An Archaeological Survey of Link Three Ingress/Egress Routes: Addendum 8 to an Archaeological Survey of Link Three of the AT&amp;T Nexgen/Core Project, Arizona and California</i> . Western Cultural Resource Management, Inc. Farmington, New Mexico. | None                 |
| 2004-810.ASM | Diehl, Allison Cohen<br>2004 <i>Archaeological Monitoring of a Water Line Installation at 107 W. 6th Street, Tucson, Pima County, Arizona</i> . Project Report No. 04-163. Desert Archaeology, Tucson.  | None                 |

Table 2 (continued)

## Previous Archaeological Surveys Within 1 Mile of the Project Area

| Agency No.    | Reference  | Site(s) Investigated |
|---------------|--|----------------------|
| 2004-1387.ASM | Diehl, Allison Cohen<br>2004 <i>Results of Archaeological Monitoring near the Intersection of Alameda Street and Paseo Redondo, Tucson, Pima County, Arizona.</i> Project Report No. 04-152. Desert Archaeology, Tucson.                         | None                 |
| 2004-1807.ASM | Diehl, Allison Cohen<br>2004 <i>Cultural Resources Survey Along Ashbury Lane, Tucson, Pima County, Arizona.</i> Project Report No. 04-179. Desert Archaeology, Tucson.   | None                 |
| 2004-1864.ASM | Fahrni, Grant, and Shannon Twilling<br>2004 <i>A Class III Cultural Resources Survey in Support of a Fiber Optic Installation in Downtown Tucson, Pima County, Arizona.</i> Project Report No. 04-237. Harris Environmental Group, Tucson.       | None                 |
| 2005-313.ASM  | Diehl, Allison Cohen<br>2005 <i>Results of Archaeological Monitoring in Historic Block 83 for a Fiber Optic Installation at the Ronstadt Transit Center Tucson, Pima County, Arizona.</i> Project Report No. 05-122. Desert Archaeology, Tucson. | None                 |
| 2005-356.ASM  | Diehl, Allison Cohen<br>2004 <i>Cultural Resources Survey at the Ochoa Neighborhood Park, Tucson, Pima County, Arizona.</i> Project Report No. 05-127. Desert Archaeology, Tucson.   | None                 |
| 2005-528.ASM  | Diehl, Allison Cohen<br>2004 <i>Cultural Resources Survey of a Parking Lot in Historic Block 84, Tucson, Pima County, Arizona.</i> Project Report No. 05-152. Desert Archaeology, Tucson.  | None                 |
| 2005-564.ASM  | Thiel, J. Homer<br>2008 <i>Archaeological Investigations at AZ BB:13:756 (ASM) and AZ BB:13:757 (ASM) Historic Block 185, Tucson, Pima County, Arizona.</i> Technical Report 2006-09. Desert Archaeology, Tucson.                                | None                 |
| 2005-617.ASM  | Knoblock, Keith<br>2005 <i>Archaeological Monitoring in Support of Fiber Optic Installation at 465 N. Granada Avenue, Tucson, Arizona.</i> Ms. on file, Harris Environmental Group, Tucson.  | None                 |



Table 2 (continued)

## Previous Archaeological Surveys Within 1 Mile of the Project Area

| Agency No.    | Reference   | Site(s) Investigated |
|---------------|---|----------------------|
| 2005-669.ASM  | Diehl, Allison Cohen<br>2005 <i>Cultural Resources Survey and Archaeological Testing Plan for the Barraza-Aviation Parkway Fourth Avenue Underpass Project, Tucson, Pima County, Arizona.</i> Project Report No. 05-164. Desert Archaeology, Tucson.  | None                 |
| 2005-791.ASM  | Diehl, Michael W.<br>2005 <i>Cultural Resources Survey for a Streetlight Project at Armory Park, Tucson, Pima County, Arizona.</i> Project Report No. 05-171. Desert Archaeology, Tucson.   | None                 |
| 2005-918.ASM  | Levstik, Jennifer, and Jeffrey T. Jones<br>2005 <i>A Cultural Resources Assessment Survey of a Portion of Block 82 Within the Tucson Warehouse Historic District at the Northeast Corner of Sixth Avenue and Toole Avenue in Tucson, Pima County, Arizona.</i> Archaeological Report No. 2005-95. Tierra Right of Way Services, Tucson. | None                 |
| 2005-927.ASM  | Diehl, Allison Cohen<br>2005 <i>Cultural Resources Survey for a Parcel on the Northwest Corner of Freemont Avenue and Broadway Boulevard, Tucson, Pima County, Arizona.</i> Project Report No. 05-190. Desert Archaeology, Tucson.  | None                 |
| 2005-1085.ASM | Klimas, Thomas<br>2005 <i>Results of Archaeological Monitoring at the Intersection of Alameda Street and Paseo Redondo in Downtown Tucson, Pima County, Arizona.</i> Archaeological Report No. 2005-131. Tierra Right of Way Services, Tucson.  | None                 |
| 2005-1243.ASM | Diehl, Allison Cohen<br>2005 <i>Cultural Resources Survey in Historic Block 72, Tucson, Pima County, Arizona.</i> Project Report No. 05-202. Desert Archaeology, Tucson.  | None                 |
| 2005-1246.ASM | Klimas, Thomas<br>2005 <i>Results of Archaeological Monitoring at the Intersection of West Congress Street and Circle Road in Downtown Tucson, Pima County, Arizona.</i> Archaeological Report No. 2005-140. Tierra Right of Way Services, Tucson.  | None                 |

Table 2 (continued)

## Previous Archaeological Surveys Within 1 Mile of the Project Area

| Agency No.   | Reference  | Site(s) Investigated |
|--------------|--|----------------------|
| 2006-17.ASM  | Hushour, Jennifer, and Eric Eugene Klucas<br>2010 <i>The 6th and Toole Project: Archaeological and Historical Investigations in the Tucson Warehouse Historic District</i> . Archaeological Research Series No. 3. Tierra Right of Way Services, Tucson.   | None                 |
| 2006-36.ASM  | Hall, Susan D.<br>2006 <i>Cultural Resources Survey of a Parcel at 1035 East Broadway Boulevard, Tucson, Pima County, Arizona</i> . Project Report No. 06-103. Desert Archaeology, Tucson.   | None                 |
| 2006-281.ASM | Diehl, Allison<br>2006 <i>Cultural Resources Survey of a Parcel under Consideration for the New Tucson Fire Department Headquarters, Tucson, Pima County, Arizona</i> . Project Report No. 06-118. Desert Archaeology, Tucson.   | None                 |
| 2006-307.ASM | Diehl, Allison Cohen<br>2006 <i>Cultural Resources Survey Along 4th Avenue Between 17th and 22nd Streets, Tucson, Pima County, Arizona</i> . Project Report No. 06-121. Desert Archaeology, Tucson.  | None                 |
| 2006-396.ASM | Hall, Susan D.<br>2006 <i>Cultural Resources Survey on the North Side of 16th Street West of Park Avenue, Tucson, Pima County, Arizona</i> . Project Report No. 06-126. Desert Archaeology, Tucson.  | None                 |
| 2006-401.ASM | Diehl, Allison Cohen<br>2006 <i>Cultural Resources Survey of Six Parcels in the Vicinity of Sentinel Avenue and Simpson Street, Tucson, Pima County, Arizona</i> . Project Report No. 06-124. Desert Archaeology, Tucson.  | None                 |
| 2006-505.ASM | Cook, Patricia<br>2006 <i>Cultural Resources Survey of Herbert Avenue at 8th Street, Tucson, Pima County, Arizona</i> . Project Report No. 06-133. Desert Archaeology, Tucson.   | None                 |
| 2006-619.ASM | Klune, Ingrid, and Jennifer Hushour<br>2006 <i>Results of Archaeological Monitoring of a Gas Pipeline Abandonment Project for 296 N. Stone Avenue, Within the Boundary of the National Cemetery {AZ BB:13:682(ASM)}, Tucson, Pima County, Arizona</i> . Archaeological Report No. 2006-78. Tierra Right-of-Way Services, Tucson. | None                 |

Table 2 (continued)

## Previous Archaeological Surveys Within 1 Mile of the Project Area

| Agency No.   | Reference   | Site(s) Investigated |
|--------------|---|----------------------|
| 2006-647.ASM | Diehl, Allison<br>2006 <i>Results of Archaeological Monitoring on 6th Avenue near Pennington Street, Tucson, Pima County, Arizona.</i> Project Report No. 06-152. Desert Archaeology, Tucson.   | None                 |
| 2006-648.ASM | Cook, Patricia M.<br>2006 <i>Cultural Resources Survey of 330 N. Hoff Avenue, Tucson, Pima County, Arizona.</i> Project Report No. 06-150. Desert Archaeology: Tucson.  | None                 |
| 2006-767.ASM | Diehl, Allison Cohen<br>2007 <i>Cultural Resources Survey for the Modern Streetcar Project East of the Fourth Avenue Underpass, Tucson, Pima County, Arizona.</i> Project Report No. 06-158. Desert Archaeology, Tucson.  | None                 |
| 2006-915.ASM | Cook, Patricia.<br>2007 <i>Cultural Resources Monitoring of Geophysical Investigations at the Proposed Location of the New Fire Department Headquarters, Tucson, Pima County, Arizona.</i> Project Report No. 06-168. Desert Archaeology, Tucson.   | None                 |
| 2007-4.ASM   | Diehl, Allison Cohen<br>2006 <i>Cultural Resources Survey of Historic Block 230, Tucson, Pima County, Arizona.</i> Project Report No. 06-174. Desert Archaeology, Tucson.   | None                 |
| 2007-57.ASM  | Hushour, Jennifer<br>2006 <i>Results of Archaeological Monitoring of a Gas Pipeline Abandonment Project for 70 West Cushing Street, Tucson, Pima County, Arizona.</i> Archaeological Report No. 2006-138. Tierra Right of Way Services, Tucson.   | None                 |
| 2007-117.ASM | Petersen, Eric S.<br>2006 <i>A Cultural Resources Survey of 1.97 Acres of Private Land and Cultural Resources Records Check of an Additional 1.82 Acres of Private Land South of Broadway Boulevard Between Tyndall Avenue and Park Avenue, Tucson, Arizona.</i> Ms. on file, SWCA, Inc., Tucson. | None                 |
| 2007-367.ASM | Urban, Sharon F.<br>2008 <i>Archaeological Monitoring in Support of a Guy Wire Anchor Installation at the Intersection of Stone Avenue and Council Street Tucson, Pima County, Arizona.</i> Project Report No. 07-091. Harris Environmental Group, Tucson.  | None                 |

Table 2 (continued)

## Previous Archaeological Surveys Within 1 Mile of the Project Area

| Agency No.   | Reference  | Site(s) Investigated |
|--------------|--|----------------------|
| 2007-680.ASM | Hesse, India<br>2007 <i>An Archaeological Survey of the Theresa Lee Health Clinic Right of Way Acquisition, COT Project 07-41, Tucson, Pima County, Arizona.</i> Cultural Resources Report No. 07-480. SWCA, Tucson.   | None                 |
| 2007-899.ASM | Doak, David P.<br>2008 <i>A Class III Cultural Resource Survey of a 1.86-Acre Parcel at 505 W. Simpson Street in Tucson, Pima County, Arizona: The Flint Oil Survey.</i> Report No. 2008-1. Tierra Right of Way Services, Tucson.                            | None                 |
| 2008-173.ASM | Diehl, Allison C.<br>2008 Letter Report to Guillermo Pena, Team Fishel. Ms. on file, Desert Archaeology, Inc., Tucson.   | None                 |
| 2008-181.ASM | Diehl, Allison<br>2008 <i>Cultural Resources Survey near the intersection of Meyer Avenue and Council Street, Tucson, Pima County, Arizona.</i> Project Report No. 08-105. Desert Archaeology, Tucson.   | None                 |
| 2008-355.ASM | Hesse, S. Jerome, and David M. R. Barr<br>2009 <i>Historic Properties Inventory for the EPNG Line No. 1007 MAOP Update Project, Tucson Metropolitan Area, Pima County, Arizona.</i> Cultural Resources Report No. 08-497. SWCA, Tucson.                      | None                 |
| 2008-515.ASM | Erickson, Kirsten<br>2008 <i>Cultural Resource Survey for Verizon Wireless Telecommunications Project, Tucson Unified School District, Tucson, Pima County, Arizona.</i> Cultural Resource Report No. 2008-42(AZ). URS, Phoenix.                             | None                 |
| 2008-546.ASM | Howell, Joseph<br>2008 <i>A Class III Cultural Resources Survey of About 1.43 Linear Miles (2.3 km) for the Rincon Heights Reinvestment Project, in the City of Tucson, Pima County, Arizona.</i> Report No. 2008-127. Tierra Right of Way Services, Tucson. | None                 |
| 2008-691.ASM | Camp, Beth Ann, and William Graves<br>2007 <i>A Class I Overview and Class III Cultural Resource Survey of the Broadway Volvo Property, Tucson, Arizona.</i> Project No. 07-14. Statistical Research, Tucson.  | None                 |

Table 2 (continued)

## Previous Archaeological Surveys Within 1 Mile of the Project Area

| Agency No.   | Reference   | Site(s) Investigated |
|--------------|---|----------------------|
| 2009-52.ASM  | Wöcherl, Helga<br>2009 Results of Archaeological Monitoring of the Installation of a Sewer Connection to 19 W. 17th Street, Tucson, Pima County, Arizona. Ms. on file, Desert Archaeology, Inc., Tucson.  | None                 |
| 2009-87.ASM  | URS Corporation<br>2008 <i>Cultural Resources Survey for Verizon Wireless Telecommunications Project TUC Congress, Tucson, Pima County, Arizona.</i> Cultural Resource Report No. 2008-45(AZ). URS Corporation, Phoenix.  | None                 |
| 2009-710.ASM | Diehl, Allison Cohen<br>2010 <i>Results of Archaeological Monitoring for Median Island and Sidewalk Modifications at the Intersection of Church Avenue and Franklin Street, Tucson, Pima County, Arizona.</i> Project Report 09-123. Desert Archaeology, Tucson.  | None                 |
| 2009-848.ASM | Tucker, David B.<br>2010 Archaeological Records Search and Survey for the Downtown Link Acquisition, 527 and 529 North Stone Avenue, Tucson, Arizona. Ms. on file, SWCA, Inc., Tucson.  | None                 |
| 2009-861.ASM | Doak, David P.<br>2010 <i>A Class III Cultural Resource Survey of a 1.64-Acre Parcel on the East Bank of Santa Cruz River in Tucson, Arizona: The Verdugo Park Survey.</i> Archaeological Report 2010-1. Tierra Right of Way Services, Tucson.  | None                 |
| 2009-862.ASM | Howell, Joseph<br>2010 <i>A Class III Cultural Resource Survey for a Proposed Bus Pullout at the El Rio Health Center, near the Corner of West Congress Street and South Avenida Del Convento, in Tucson, Pima County, Arizona.</i> Archaeological Report 2010-3. Tierra Right of Way Services, Tucson. | None                 |
| 2010-57.ASM  | Tucker, David B.<br>2010 Archaeological Records Search and Survey for the San Antonio Neighborhood Reinvestment Project, Tucson, Arizona. Ms. on file, SWCA, Inc., Tucson.  | None                 |
| 2010-105.ASM | Tucker, David B.<br>2010 <i>Archaeological Monitoring Along Main Avenue and Alameda Street During Installation of an Underground Utility Conduit in Tucson, Pima County, Arizona.</i> Ms. on file, SWCA, Inc., Tucson.  | None                 |

Table 2 (continued)

## Previous Archaeological Surveys Within 1 Mile of the Project Area

| Agency No.   | Reference  | Site(s) Investigated   |
|--------------|--|--|
| 2010-194.ASM | Luchetta, Sarah K., and James Moses<br>2010 A Class I and Class III Cultural Resources Assessment Survey of a Proposed Wireless Telecommunications Facility AT&T Mobility B167-BB (Santa Rita Park) Located at the Northeast Corner of 4th Avenue and 22nd Street in Tucson, Pima County, Arizona. Ms. on file, Antigua Archaeology, Prescott. | None   |
| 2011-31.ASM  | West, Heather M.<br>2011 <i>Non-site Archaeological Monitoring near St. Mary's Road During Installation of an Underground Utility Conduit in Downtown Tucson, Pima County, Arizona.</i> Project No. 17253. SWCA, Tucson.   | None   |
| 2011-502.ASM | Diehl, Allison Cohen<br>2011 <i>Cultural Resources Survey Along An Abandoned Railroad Spur Near the Intersection of West 18th Street and the Interstate 10 Frontage Road, Tucson, Pima County, Arizona.</i> Report No. 11-141. Desert Archaeology, Tucson.   | None   |
| 2012-73.ASM  | Knoblock, Keith<br>2001 <i>A Cultural Resource Survey for a Proposed Fiber Optic Corridor Spanning Southeastern Arizona in Pima, Santa Cruz, and Cochise Counties.</i> Report No. 421/423. Lone Mountain Archaeological Services, Tucson.  | AZ BB:13:647;<br>AZ EE:2:484;<br>AZ EE:8:304 and 305; and<br>AZ FF: 11 :97 (ASM) |
| 2012-373.ASM | Johnson, Kirsten<br>2012 <i>Cultural Resource Survey for AT&amp;T Telecommunications Project T549 TCC West Side Roof, Tucson, Pima County, Arizona.</i> Cultural Resource Report 2012-12(AZ). URS Corporation, Phoenix.  | None   |
| 2012-380.ASM | Diehl, Allison Cohen<br>2012 Letter report to Cynthia Hoaglund of Tricon Contracting, Inc. Ms. on file, Desert Archaeology, Inc., Tucson.  | None   |
| 2012-469.ASM | Cox, Eric S.<br>2012 <i>Archaeological Survey of North 6th Avenue from Drachman Street to 5th Street, Tucson, Pima County, Arizona.</i> Report No. 15-32. Northland Research, Tempe.   | None   |
| 2012-485.ASM | Euler, R. Thomas<br>2011 Monitoring of Excavations on 19th Street, Between 8th and 9th Avenues (Supplemental Monitoring for Qwest Job #0212KS3). Ms. on file, Power Engineers, Tucson.   | None   |

Table 2 (continued)

## Previous Archaeological Surveys Within 1 Mile of the Project Area

| Agency No.   | Reference  | Site(s) Investigated |
|--------------|--|----------------------|
| 2012-565.ASM | Diehl, Allison Cohen<br>2012 <i>Archaeological Monitoring of a Sewer Line Repair at the Rear of 310 S. Toole Avenue, Tucson, Arizona.</i> Project No. 12-108E. Desert Archaeology, Tucson.   | None                 |
| 2012-599.ASM | Diehl, Allison Cohen<br>2012 <i>Archaeological Monitoring of a Sewer Line Repair near 749 S. 4th Avenue, Tucson, Arizona.</i> Letter Report. Desert Archaeology, Tucson.   | None                 |
| 2012-600.ASM | Diehl, Allison Cohen<br>2012 <i>Archaeological Monitoring of a Sewer Line Repair at 280 S. Church Avenue, Tucson, Arizona.</i> Letter Report. Desert Archaeology, Tucson.  | None                 |
| 2012-611.ASM | Hopkins, Maren P.<br>2009 <i>Cultural Resources Monitoring for the Repair and Installation of a Segment of Sewer Line near the Northwest Corner of Simpson and Otero in Barrio El Hoyo, Tucson, Pima County, Arizona.</i> Technical Report No. 09-16. Northland Research, Tempe. | None                 |
| 2012-615.ASM | Hopkins, Maren<br>2010 <i>Cultural Resources Monitoring for the Repair and Installation of a Segment of Sewer Line South of the Corner of 10th Avenue and 18th Street in Barrio Libre, Tucson, Pima County, Arizona.</i> Technical Report 10-55. Northland Research, Tempe.      | None                 |
| 2012-621.ASM | O'Mack, Scott<br>2012 <i>Unanticipated Discovery of an Early-Vehicle-Actuated Traffic Signal Switch in Downtown Tucson, Arizona.</i> Technical Report No. 2012-44. William Self Associates, Tucson.  | None                 |
| 2013-93.ASM  | Buckles, Avi, and Fred Huntington<br>2012 <i>A Cultural Resources Inventory and Assessment of the El Rio Santa Cruz Neighborhood Health Center Property in Tucson, Pima County, Arizona.</i> Report no. 2012-31. Westland Resources, Tucson.                                     | None                 |
| 2013-283.ASM | O'Mack, Scott<br>2013 <i>A Cultural Resources Survey for a Realignment of High School Wash, Tucson, Pima County, Arizona.</i> Technical Report no. 2013-28. William Self Associates, Tucson.   | None                 |

Table 2 (continued)

## Previous Archaeological Surveys Within 1 Mile of the Project Area

| Agency No.     | Reference  | Site(s) Investigated |
|----------------|--|----------------------|
| 2013-515.ASM   | Diehl, Allison Cohen<br>2013 <i>Cultural Resources Survey for a Fiber Optic Line Along Scott Avenue and Pennington Street in Downtown Tucson, Pima County, Arizona.</i> Project Report No. 13-113. Desert Archaeology, Tucson.     | None                 |
| 2013-516.ASM   | Diehl, Allison Cohen<br>2013 <i>Cultural Resources Survey for a Fiber Optic Line on Scott Avenue in Downtown Tucson, Pima County, Arizona.</i> Project Report No. 13-114. Desert Archaeology, Tucson.                              | None                 |
| 92-101.Desarc  | No reference available in the AZSITE database.   | None                 |
| SHPO 2002-519  | Diehl, Allison Cohen<br>2002 <i>Cultural Resources Survey of Fourth Avenue Between 22nd and 25th Streets, Tucson, Pima County, Arizona.</i> Project Report No. 99-171. Desert Archaeology, Tucson.                                 | None                 |
| SHPO 2002-1096 | Diehl, Allison Cohen<br>2002 <i>A Cultural Resources Survey of 18th Street Between 5th and 7th Avenues Tucson, Pima County, Arizona.</i> Project Report No. 02-119. Desert Archaeology, Tucson.                                    | None                 |
| SHPO 2002-1261 | Slawson, Laurie V.<br>2002 <i>A Cultural Resource Inventory for a Proposed Telecommunications Site (PH30821A, Tucson Magnet High) at 400 N. Second Avenue in Tucson.</i> Technical Report No. 2002-45. Aztlan Archaeology, Tucson. | None                 |
| 11-42-5B.BLM   | No reference available in the AZSITE database.   | None                 |
| 12-56-BLM      | No reference available in the AZSITE database.   | None                 |
| 12-60-13A.BLM  | No reference available in the AZSITE database.   | None                 |
| 12-60-13B.BLM  | No reference available in the AZSITE database.   | None                 |
| 12-60-819A.BLM | No reference available in the AZSITE database.   | None                 |
| 12-60-8E.BLM   | No reference available in the AZSITE database.   | None                 |



Table 3  
Previously Recorded Archaeological Sites

| Site Number (ASM) | Site Description  | Location                     |
|-------------------|---|------------------------------|
| AZ BB:13:149      | Historic: Coronado Hotel  | Section 12 (T14S, R13E)      |
| AZ BB:13:152      | Historic: Ronstadt homestead  | Section 12 (T14S, R13E)      |
| AZ BB:13:157      | Prehistoric limited activity locus  | Section 11 (T14S, R13E)      |
| AZ BB:13:160      | Prehistoric and historic habitation   | Sec. 12/13 (T14S, R13E)      |
| AZ BB:13:325      | Historic building foundations and trash; dating 1775-1820s                                    | Section 12 (T14S, R13E)      |
| AZ BB:13:383      | Historic habitation site; Papago, Mexican, and Euro-American                                  | Section 13 (T14S, R13E)      |
| AZ BB:13:397      | Southern Pacific Roundhouse, circa 1930s  | Section 24 (T14S, R13E)      |
| AZ BB:13:401      | Historic: Residential; Euro-American  | Section 12 (T14S, R13E)      |
| AZ BB:13:405      | Historic Blocks: Euro-American  | Section 13 (T14S, R13E)      |
| AZ BB:13:424      | Historic: Habitation  | Section 13 (T14S, R13E)      |
| AZ BB:13:462      | Historic: Habitation; dating 1883 to 1920s  | Section 12 (T14S, R13E)      |
| AZ BB:13:481      | Historic: Acequia Madre Tercia  | Section 14 (T14S, R13E)      |
| AZ BB:13:484      | Historic Block 155  | Section 13 (T14S, R13E)      |
| AZ BB:13:485      | Historic Block 154  | Section 13 (T14S, R13E)      |
| AZ BB:13:486      | Historic Block 141  | Section 13 (T14S, R13E)      |
| AZ BB:13:487      | Historic Block 133  | Section 13 (T14S, R13E)      |
| AZ BB:13:488      | Historic Block 134  | Section 13 (T14S, R13E)      |
| AZ BB:13:490      | Historic period burial  | Section 13 (T14S, R13E)      |
| AZ BB:13:491      | Historic Block 165  | Section 13 (T14S, R13E)      |
| AZ BB:13:492      | Historic Block 247; 1900 to 1930s   | Section 13 (T14S, R13E)      |
| AZ BB:13:493      | Historic Block 120; 1890s to 1910s  | Section 13 (T14S, R13E)      |
| AZ BB:13:494      | Historic habitation site; 1880 to 1910  | Section 12 (T14S, R13E)      |
| AZ BB:13:495      | Protohistoric burials   | Section 13 (T14S, R13E)      |
| AZ BB:13:496      | Historic Block 243; 1900 to 1910  | Section 13 (T14S, R13E)      |
| AZ BB:13:497      | Prehistoric habitation site with canal  | Section 14 (T14S, R13E)      |
| AZ BB:13:498      | Historic Block 240, prior to 1910   | Section 13 (T14S, R13E)      |
| AZ BB:13:499      | Historic Block 236; 1891 to 1905  | Section 13 (T14S, R13E)      |
| AZ BB:13:500      | Historic Block 235; 1922 to 1930s   | Section 13 (T14S, R13E)      |
| AZ BB:13:501      | Historic Block 228; 1880 to 1930s   | Section 13 (T14S, R13E)      |
| AZ BB:13:503      | Historic Block 241; prior to 1930s  | Section 13 (T14S, R13E)      |
| AZ BB:13:504      | Historic Block 242; 1900 to 1920s   | Section 13 (T14S, R13E)      |
| AZ BB:13:506      | Historic Block 245; 1890s to 1940s  | Section 13 (T14S, R13E)      |
| AZ BB:13:507      | Historic Block 221; 1890 to 1910s   | Section 13 (T14S, R13E)      |
| AZ BB:13:508      | Historic Block 132; 1900 to 1929  | Section 13 (T14S, R13E)      |
| AZ BB:13:510      | Historic: El Paso & Southwest Freight Depot with Southern Pacific Hospital; ca. 1920s to 1979 | Section 13 (T14S, R13E)      |
| AZ BB:13:511      | Historic Block 246, protohistoric burials   | Section 13 (T14S, R13E)      |
| AZ BB:13:512      | Historic Block 164  | Section 13 (T14S, R13E)      |
| AZ BB:13:534      | Hohokam habitation site   | Section 13 (T14S, R13E)      |
| AZ BB:13:535      | Hohokam habitation site   | Section 13 (T14S, R13E)      |
| AZ BB:13:537      | Historic Block 173  | Section 12 (T14S, R13E)      |
| AZ BB:13:624      | Historic Block 174  | Section 13 (T14S, R13E)      |
| AZ BB:13:625      | Historic Block 177  | Section 13 (T14S, R13E)      |
| AZ BB:13:626      | Historic Block 237  | Section 13 (T14S, R13E)      |
| AZ BB:13:642      | La Entrada Canada   | Sections 12, 13 (T14S, R13E) |
| AZ BB:13:644      | Historic Block 139  | Section 13 (T14S, R13E)      |
| AZ BB:13:646      | Historic Grabe Brick Company  | Section 11 (T14S, R13E)      |
| AZ BB:13:668      | Historic Block 172  | Section 12 (T14S, R13E)      |
| AZ BB:13:678      | Historic Block 159  | Section 13 (T14S, R13E)      |

Table 3 (continued)

## Previously Recorded Archaeological Sites

| Site Number (ASM) | Site Description                                    | Location                                 |
|-------------------|---|--|
| AZ BB:13:679      | Tucson & Nogales Railroad                           | Multiple sections, townships, and ranges |
| AZ BB:13:682      | National Cemetery                                   | Section 12 (T14S, R13E)                  |
| AZ BB:13:700      | Southern Pacific Railroad Depot Complex             | Section 10 (T14S, R13E)                  |
| AZ BB:13:711      | Historic trash and two sidewalks                    | Section 13 (T14S, R13E)                  |
| AZ BB:13:721      | Historic Arizona Ice and Cold Storage Company Plant | Section 18 (T14S R13E)                   |
| AZ BB:13:735      | No information in the AZSITE database               | Section 12 (T14S, R13E)                  |
| AZ BB:13:756      | Historic Block 185                                  | Section 13 (T14S, R13E)                  |
| AZ BB:13:784      | No information in the AZSITE database               | Section 12 (T14S, R13E)                  |
| AZ EE:1:300       | Twin Buttes Railroad                                | Multiple sections, townships, and ranges |
| AZ EE:3:74        | El Paso-Southwestern Railroad                       | Multiple sections, townships, and ranges |
| AZ FF:9:17        | Historic State Route 79                             | Multiple sections, townships, and ranges |

The files and databases indicate that 208 survey and monitoring projects have been conducted within a 1-mile-radius of the project area. Fifty-nine archaeological sites are recorded within the same distance. Thirty-eight properties are listed within 1 mile of the project area on the National Register of Historic Places (*see* Figure 4).

#### *General Land Office Maps*

One General Land Office map, dating to February 1872, is available for Township 14 South, Range 13 East. The city of Tucson is shown, although no individual buildings are labeled. Also, several roads cross the section heading to Tubac, Apache Pass, Fort Yuma, and the Brick Yard.

Table 4

## National Register-Listed Properties Within 1 Mile of the Project Area

| Historic Property  | Location   | NRHP Criteria |
|--|--|---------------|
| Arizona Daily Star Building                                      | 30 North Church Avenue   | --            |
| Arizona Hotel <sup>1</sup>                                       | 31-477 North 6th Avenue and<br>135 East 10th Avenue                                | ---           |
| Armory Park Historic Residential District<br>(AZ BB:13:76 [ASM]) | 19th to 21st Streets from Stone<br>Avenue to Jacobs Avenue                         | A, C          |
| Barrio Libre   | 14th 19th, Stone, and Osborne Streets  | A, C          |
| Blixt-Avitia House <sup>2</sup>                                  | 830 West Alameda Street  | C             |
| Boudreaux-Robison House <sup>2</sup>                             | 101 North Bella Vista Drive  | C             |
| Bray-Valenzuela House <sup>2</sup>                               | 203 North Grande Avenue  | C             |
| Copper Bell Bed & Breakfast <sup>2</sup>                         | 25 North Westmoreland Avenue   | C             |
| Cordova House  | 173-177 North Meyer Avenue   | C             |
| Coronado Hotel   | 410 East 9th Street  | A, C          |
| Dodson-Esquivel House <sup>2</sup>                               | 1004 West Alameda Street   | C             |
| El Encanto Apartments  | 2820 East Sixth Street   |               |
| El Paso & Southwestern Railroad Depot <sup>1</sup>               | 419 West Congress Street   |               |
| El Presidio Historic District                                    | Bounded by 6th and West Alameda,<br>Streets and North Stone and Granada<br>Avenues | C, D          |
| El Tiradito  | 221 South Main Street  | A             |
| First Hittinger Block <sup>1</sup>                               | 116 East Congress Street   |               |
| Fox Commercial Building <sup>1</sup>                             | 27 West Congress Street  |               |
| Fox Theatre <sup>1</sup>   | 17 West Congress Street  |               |
| Hotel Congress <sup>1</sup>                                      | 303-311 East Congress Street   |               |
| J. C. Penney-Chicago Store <sup>1</sup>                          | 130 East Congress Street   |               |

<sup>1</sup>Downtown Tucson, Arizona MPS<sup>2</sup>Menlo Park MPS

Table 4 (continued)

National Register-Listed Properties Within 1 Mile of the Project Area

| Historic Property   | Location  | NRHP Criteria |
|---|---|---------------|
| Julian Drew Building                                      | 182 East Broadway Boulevard   | ---           |
| Rebeil Block <sup>1</sup>                                 | 72 East Congress Street   | ---           |
| Rialto Building <sup>1</sup>                              | 300-320 East Congress Street  | ---           |
| Rialto Theatre <sup>1</sup>                               | 318 East Congress Street  | ---           |
| Ronstadt House <sup>4</sup>                               | 607 North 6th Avenue  | A, B, C       |
| Ronstadt-Sims Adobe Warehouse <sup>4</sup>                | 911 North 13th Avenue   | A, C          |
| Sabedra-Huerta House <sup>4</sup>                         | 1036-1038 North 13th Street   | A, C          |
| Old Adobe Patio   | 40 West Broadway Boulevard  | C             |
| Santa Cruz Catholic Church                                | 1220 South 6th Avenue   |               |
| Sixth Avenue Underpass <sup>3</sup>                       | Sixth Avenue  | A, C          |
| Sosa-Carrillo Fremont House                               | 145-153 South Main Street   | C             |
| Spring, John, Neighborhood Historic District <sup>4</sup> | Bounded by West Speedway Boulevard, North 9th Avenue, West 5th Street, North Main Avenue, West Second Street, and North 10th Street | A, C          |
| Stone Avenue Underpass <sup>3</sup>                       | Stone Avenue  | A, C          |
| Tucson Warehouse Historic District                        | Bounded by 6th Street and 4th and Toole Avenues   |               |
| U.S. Post Office and Courthouse                           | 55 East Broadway Boulevard  | A, C          |
| Valley National Bank Building <sup>1</sup>                | 27 South Stone Avenue   |               |
| Velasco House   | 471-475-477 South Stone Avenue and 522 South Russell Street   | A, B, C       |
| Warner, Solomon, House and Mill                           | 350 South Grande Avenue   | A             |

<sup>1</sup>Downtown Tucson, Arizona MPS

<sup>3</sup>Vehicular Bridges in Arizona MPS

<sup>4</sup>John Spring MRA

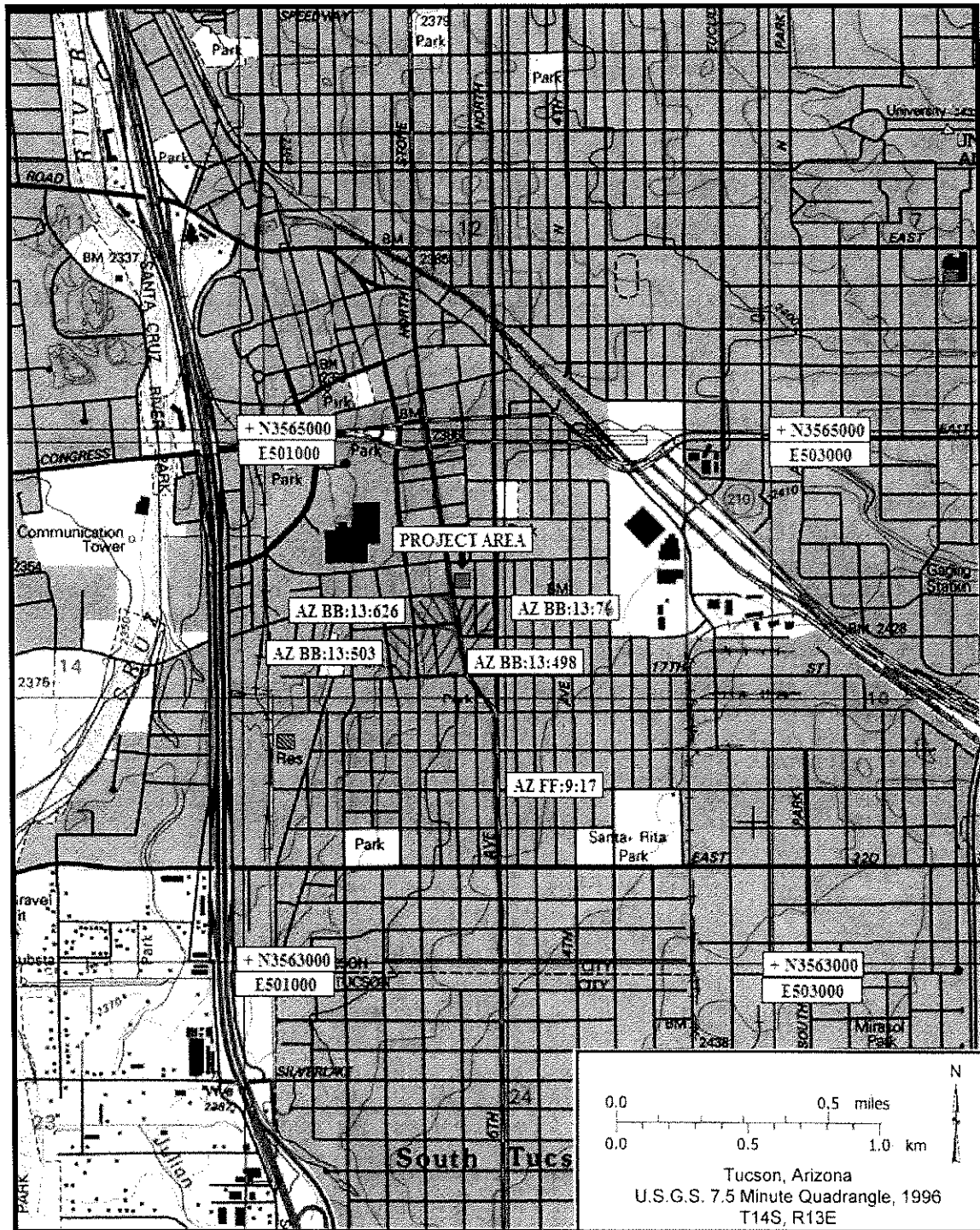


Figure 1. Location of the project area and National Register properties in the immediate vicinity (U.S.G.S. Tucson, Arizona 7.5 Minute quadrangle map, T14S, R13E; scale = 1:24,000). UTM coordinates are recorded in North American Datum (NAD) 83.

### *National Register of Historic Places*

Thirty-eight historic properties within 1 mile of the project area are listed on the National Register of Historic Places (NRHP). Twenty-two of the listed properties are included within the Downtown Tucson, Arizona; Multiple Property Submission (MPS); Menlo Park MPS; Vehicular Bridges in Arizona MPS; and John Spring Multiple Resource Area (MRA). Information pertinent to these properties is presented in Table 4.

### *State Register of Historic Places*

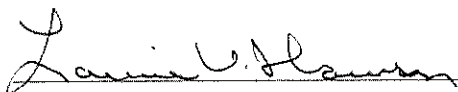
More than a thousand individual properties within a mile of the project area are listed on the Arizona State Inventory of Historic Places.

### Class III Survey

The field assessment was conducted on November 14, 2014, by Laural Myers (field director). Entry was restricted to the property, but all accessible areas were examined and photographs were taken.

### Summary and Recommendations

Two hundred and eight survey and monitoring projects have been conducted within a mile of the project area, which has been surveyed previously. Fifty-nine sites, 38 National Register-listed properties, and more than 1,000 other historic properties have been recorded within that same distance. The project area is bounded by two National Register-listed properties (AZ BB:13:76 and 626). However, if the street façade of the Downtown Motor Hotel is partially retained, little to no visual impact should occur to AZ BB:13:76 and AZ BB:13:626.



Laurie V. Slawson, Ph.D., RPA  
Principal Investigator

## References Cited

- Ayres, James E., A. E. Rogge, Everett J. Bassett, Melissa Keane, and Diane L. Douglas  
1992 *Humbug! The Historical Archaeology of Placer Mining on Humbug Creek in Central Arizona*. Dames & Moore, Phoenix.
- Brown, David E., and Charles H. Lowe  
1994 *Biotic Communities of the Southwest Map*. Reprinted. University of Utah Press, Salt Lake City. Originally published 1980 as General Technical Report RM-78, Rocky Mountain Forest and Range Experiment Station, Forest Service, U.S. Department of Agriculture. U.S. Government Printing Office, Washington, D.C.
- Ciolek-Torrello, Richard S.  
1995 The Houghton Road Site, the Agua Caliente Phase, and the Early Formative Period in the Tucson Basin. *Kiva* 60:531-574.
- Clark, Larry D., and Victor H. Verity  
1986 *Mineral Rights in Arizona: Laws and Regulations*. Special Report No. 12. Department of Mines and Mineral Resources, Phoenix.
- Doelle, William H.  
1984 The Tucson Basin During the Protohistoric Period. *The Kiva* 49:195-211.  
1985 *Excavations at the Valencia Site: A Preclassic Hohokam Village in the Southern Tucson Basin*. Anthropological Paper No. 3. Institute for American Research, Tucson.
- Doyel, David E.  
1978 *The Miami Wash Project: Hohokam and Salado in the Globe-Miami Parcel, Central Arizona*. Contribution to Highway Salvage in Arizona No. 52. Arizona State Museum, University of Arizona, Tucson.
- Doyel, David E., and Emil W. Haury (editors)  
1976 Summary of Conference Discussion, the 1976 Salado Conference. *The Kiva* 42:127-134.
- Faught, Michael K., and Andrea K. L. Freeman  
1998 Paleoindian Complexes of the Terminal Wisconsin and Early Holocene. In *Paleoindian and Archaic Sites in Arizona*, by Jonathan B. Mabry, pp. 33-52. Center for Desert Archaeology, Tucson.
- Feil, Lin B.  
1968 Helvetia, Boom Town in the Santa Ritas. *The Journal of Arizona History* 9:77-95.
- Fish, Suzanne K., Paul R. Fish, and John H. Madsen (editors)  
1992 *The Marana Community in the Hohokam World*. Anthropological Papers of the University of Arizona No. 56. The University of Arizona Press, Tucson.

Goudy, Karin

- 1987 Life in a Boom Town—Oatman, Arizona. In *History of Mining in Arizona*, edited by Michael Canty and Michael N. Greeley, pp. 152-176. Mining Club of the Southwest Foundation, Tucson.

Gregory, David A.

- 2001 An Evaluation of Early Agricultural Period Chronology in the Tucson Basin. In *Excavations in the Santa Cruz River Floodplains: The Early Agricultural Period Component at Los Pozos*, edited by David A. Gregory, pp. 237-254. Anthropological Papers No. 21. Center for Desert Archaeology, Tucson.

Gregory, David A., editor

- 1999 *Excavations in the Santa Cruz River Floodplain: The Middle Archaic Component of Los Pozos*. Anthropological Papers No. 20. Center for Desert Archaeology, Tucson.
- 2001 *Excavations in the Santa Cruz River Floodplains: The Early Agricultural Period Component at Los Pozos*. Anthropological Papers No. 21. Center for Desert Archaeology, Tucson.

Haury, Emil W.

- 1950 *The Stratigraphy and Archaeology of Ventana Cave*. The University of Arizona Press, Tucson.

Haury, Emil W., Edward B. Sayles, and William W. Wasley

- 1959 The Lehner Mammoth Site, Southeastern Arizona. *American Antiquity* 25:2-32.

Hayden, Julian D.

- 1970 Of Hohokam Origins and Other Matters. *American Antiquity* 35:87-94.
- 1976 Pre-Altithermal Archaeology in the Sierra Pinacate, Sonora, Mexico. *American Antiquity* 40:274-289.

Haynes, C. Vance, Jr.

- 1973 Exploration of a Mammoth-Kill Site in Arizona. *National Geographic Society Research Reports* 1966:125-126.
- 2007 Clovis Investigations in the San Pedro Valley. In *Murray Springs: A Clovis Site with Multiple Activity Areas in the San Pedro River Valley, Arizona*, edited by C. Vance Haynes, Jr., and Bruce B. Huckell, pp. 1-15. Anthropological Papers of the University of Arizona No.71. The University of Arizona Press, Tucson.

Haynes, C. Vance, Jr., and Bruce B. Huckell (editors)

- 2007 *Murray Springs: A Clovis Site with Multiple Activity Areas in the San Pedro River Valley, Arizona*. Anthropological Papers of the University of Arizona No.71. The University of Arizona Press, Tucson.

Hemmings, E. Thomas

- 1970 *Early Man in the San Pedro Valley, Arizona*. Unpublished Ph.D. dissertation, Department of Anthropology, University of Arizona.



- Hesse, G. Jerome, and Annick Lascaux (editors)  
 2005 *The Cortaro Road Site: 2800 Years of Prehistory in the Tucson Basin*. Cultural Resources Report No. 03-172. SWCA, Tucson.
- Hohmann, John W., and Linda B. Kelley  
 1988 *Erich F. Schmidt's Investigation of Salado Sites in Central Arizona*. Bulletin No. 56. Museum of Northern Arizona, Flagstaff.
- Huckell, Bruce B.  
 1984 The Paleo-Indian and Archaic Occupation of the Tucson Basin: An Overview. *The Kiva* 49:133-145.  
 1990 *Late Preceramic Farmer-Foragers in Southeastern Arizona: A Cultural and Ecological Consideration of the Spread of Agriculture into the Arid Southwestern United States*. Unpublished Ph.D. dissertation, Arid Lands Resource Sciences Department, University of Arizona, Tucson.  
 1996 The Archaic Prehistory of the North American Southwest. *Journal of World Prehistory* 10:305-373.
- Huckell, Bruce B., and Lisa W. Huckell  
 1984 Excavations at Milagro, a Late Archaic Site in the Eastern Tucson Basin. Ms. on file, Arizona State Museum, University of Arizona, Tucson.
- Huckell, Bruce B., Lisa W. Huckell, and Suzanne K. Fish  
 1995 *Investigations at Milagro, a Late Preceramic Site in the Eastern Tucson Basin*. Technical Report No. 94-5. Center for Desert Archaeology, Tucson.
- Karpiscak, Martin M., and N. Gene Wright  
 1991 Mining and the Environment. In *Preserving Arizona's Environmental Heritage*, pp. 101-112. The University of Arizona Press, Tucson.
- Keane, Melissa, and A. E. Rogge  
 1992 *Gold & Silver Mining in Arizona, 1848-1945*. Research Paper No. 6. Dames & Moore Intermountain Cultural Resources Services, Phoenix.
- Mabry, Jonathan B.  
 1998 Architectural Variability and Site Structures. In *Archaeological Investigations of Early Village Sites in the Middle Santa Cruz Valley: Analysis and Synthesis*, edited by Jonathan B. Mabry, pp. 209-243. Anthropology Papers No. 19. Center for Desert Archaeology, Tucson  
 2007a Chronology. In *Las Capas: Early Irrigation and Sedentism in a Southwestern Floodplain*, edited by Jonathan B. Mabry, pp. 67-93. Anthropological Papers No. 28. Center for Desert Archaeology, Tucson.  
 2007b *Las Capas: Early Irrigation and Sedentism in a Southwestern Floodplain*, edited by Jonathan B. Mabry, pp. 67-93. Anthropological Papers No. 28. Center for Desert Archaeology, Tucson.

Mabry, Jonathan B. (editor)

- 1998 *Archaeological Investigations of Early Village Sites in the Middle Santa Cruz Valley: Analysis and Synthesis*. Anthropology Papers No. 19. Center for Desert Archaeology, Tucson.

Mabry, Jonathan B., Deborah L. Swartz, Helga Wöcherl, Jeffery J. Clark, Gavin H. Archer, and Michael W. Lindeman

- 1997 *Archaeological Investigations of Early Village Sites in the Middle Santa Cruz Valley: Descriptions of the Santa Cruz Bend, Square Hearth, Stone Pipe, and Canal Sites*. Anthropological Papers No. 18. Center for Desert Archaeology, Tucson.

Madsen, John H., Paul R. Fish, and Suzanne K. Fish (editors)

- 1993 *The Northern Tucson Basin Survey: Research Directions and Background Studies*. Archaeological Series No. 182. Arizona State Museum, University of Arizona, Tucson.

Masse, W. Bruce

- 1981 A Reappraisal of the Protohistoric Sobaipuri Indians of Southeastern Arizona. In *The Protohistoric Period in the North American Southwest, AD 1450-1700*, edited by David R. Wilcox and W. Bruce Masse, pp. 28-56. Anthropological Papers No. 24. Arizona State University, Tempe.

Meinig, D. W.

- 1971 *Southwest: Three Peoples in Geographical Change, 1600-1970*. Oxford University Press, New York.

Nelson, Ben A., and Steven A. LeBlanc

- 1986 *Short-Term Sedentism in the American Southwest: The Mimbres Valley Salado*. Maxwell Museum of Anthropology Publication Series. University of New Mexico Press, Albuquerque.

Officer, James

- 1987 *Hispanic Arizona, 1536-1856*. The University of Arizona Press, Tucson.

Ravesloot, John C., and Stephanie M. Whittlesey

- 1987 Inferring the Protohistoric Period in Southern Arizona. In *The Archaeology of the San Xavier Bridge Site (AZ BB:13:14), Tucson Basin, Southern Arizona*, edited by John C. Ravesloot, pp. 81-98. Archaeological Series No. 171. Arizona State Museum, University of Arizona, Tucson.

Rice, Glen E.

- 1990 An Intellectual History of the Salado Concept. In *A Design for Salado Research*, edited by Glen E. Rice, pp. 21-29. Roosevelt Monograph Series No. 1, Anthropological Field Studies No. 22. Office of Cultural Resource Management, Department of Anthropology, Arizona State University, Tempe.

Rogers, Malcolm J.

- 1966 *Ancient Hunters of the Far West*. Edited by Richard F. Pourade. The Union-Tribune Publishing Company, San Diego.

- Sayles, E. B.  
 1983 *The Cochise Cultural Sequence in Southeastern Arizona*. Anthropological Papers No. 42. The University of Arizona Press, Tucson.
- Sayles, E. B., and Ernst Antevs  
 1941 *The Cochise Culture*. Medallion Papers No. 29. Gila Pueblo, Globe, Arizona.
- Sheridan, Thomas  
 1995 *Arizona: A History*. The University of Arizona Press, Tucson.
- Simpson, Kay, and Susan J. Wells  
 1984 *Archaeological Survey in the Eastern Tucson Basin, Saguaro National Monument, Rincon Mountain Unit, Tanque Verde Ridge, Rincon Creek, Mica Mountain Areas*. Publications in Anthropology No. 22, Vol. 3. Western Archaeological and Conservation Center, National Park Service, Tucson.
- Slawson, Laurie V.  
 1994 *Relationship of Environment and Dynamic Disequilibrium to Hohokam Settlement Along the Santa Cruz River in the Tucson Basin of Southern Arizona*. Unpublished Ph.D. dissertation, Department of Anthropology, University of Arizona, Tucson.
- Slawson, Laurie V., Skip Miller, David C. Hanna, and Peter L. Steere  
 1986 *The Cortaro Site (AZ AA:12:232), a Late Archaic Period Occupation in the Tucson Basin*. Southwest Cultural Series No. 2. Cultural & Environmental Systems, Tucson.
- Teague, George A.  
 1980 *Reward Mine and Associated Sites, Historical Archeology on the Papago Reservation*. Publications in Anthropology No. 11. Western Archeological Center, Tucson.
- Thiel, J. Homer, and Michael W. Diehl  
 2006 Cultural History of the Tucson Basin and the Project Area. In *Rio Nuevo Archaeology, 2000-2003: Investigations at the San Agustín Mission and Mission Gardens, Tucson Presidio, Tucson Pressed Brick Company, and Clearwater Site*, edited by J. Homer Thiel and Jonathan B. Mabry, pp. 3.1-3.8. Technical Report No. 2004-11. Desert Archaeology, Tucson.
- Thiel, J. Homer, and Jonathan B. Mabry (editors)  
 2006 *Rio Nuevo Archaeology, 2000-2003: Investigations at the San Agustín Mission and Mission Gardens, Tucson Presidio, Tucson Pressed Brick Company, and Clearwater Site*. Technical Report No. 2004-11. Desert Archaeology, Tucson.
- Wagoner, Jay J.  
 1975 *Early Arizona, Prehistory to Civil War*. The University of Arizona Press, Tucson.

- Whittlesey, Stephanie M., Richard S. Ciolek-Torello, and Matthew A. Sterner  
1994 *Southern Arizona, the Last 12,000 Years: A Cultural-Historic Overview for the Western Army National Guard Aviation Training Site*. Technical Series 48. Statistical Research, Tucson.
- Whittlesey, Stephanie M., S. Jerome Hesse, and Michael S. Foster  
2007 *Recurrent Sedentism and the Making of Place: Archaeological Investigations at Las Capas, a Preceramic Period Farming Community in the Tucson Basin, Southern Arizona*. Cultural Resources Report No. 07-556. SWCA, Tucson.
- Wilcox David R., and W. Bruce Masse  
1981 A History of Protohistoric Studies in the North American Southwest. In *The Protohistoric Period in the North American Southwest, AD 1450-1700*, edited by David R. Wilcox and W. Bruce Masse, pp. 14-27. Anthropological Papers No. 24. Arizona State University, Tempe.