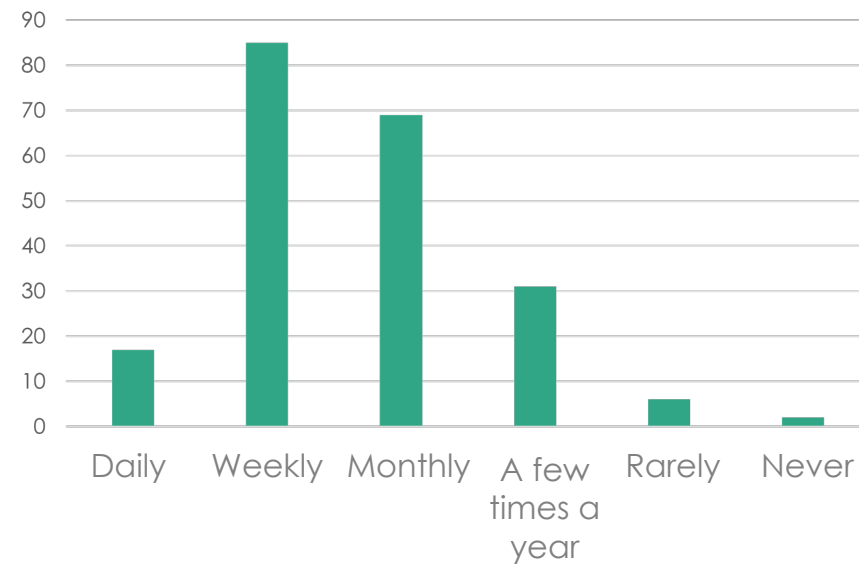


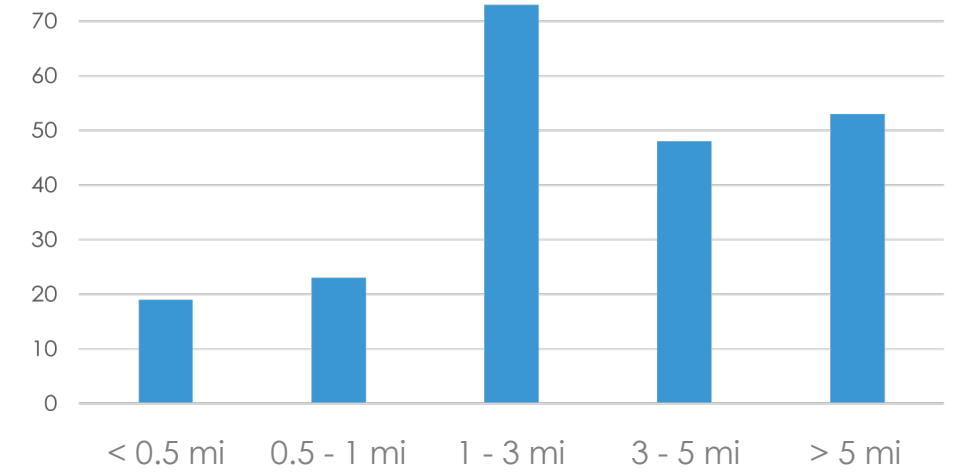
WHO DID WE HEAR FROM?



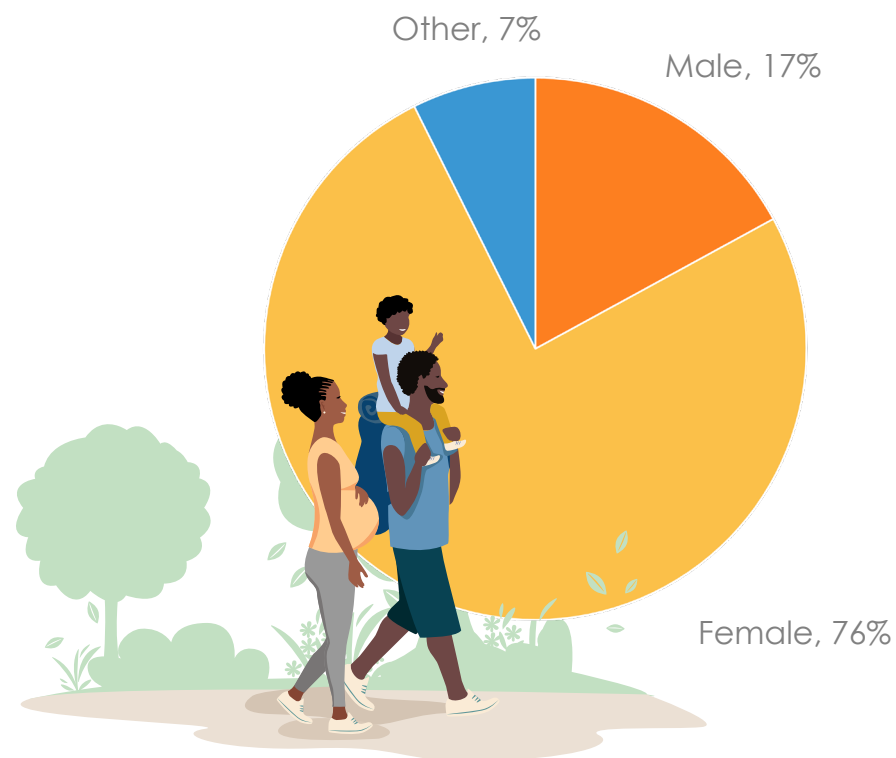
How Often Do You Visit Udall Park?



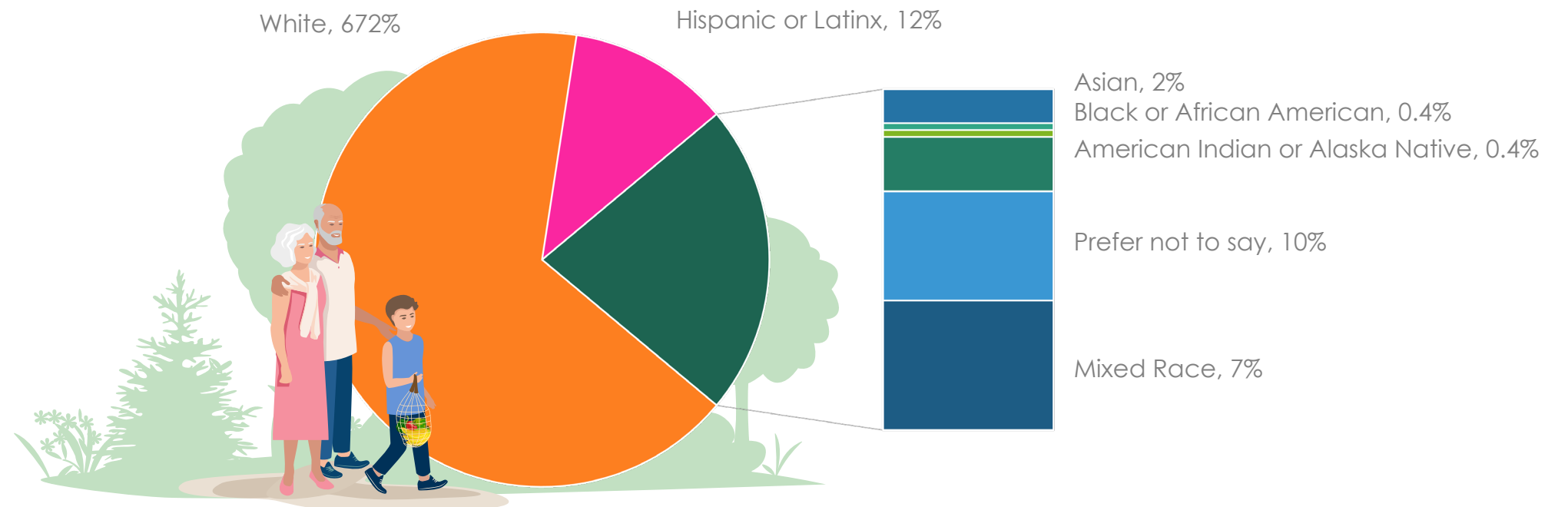
How Far Do You Travel to Get to Udall Park?



Gender Identity of Survey Respondents



Race or Ethnic Identity of Survey Respondents



WE ASKED FOR FEEDBACK ON THREE DIFFERENT PLAYGROUND CONCEPTS



Desert Wild

Sonoran Desert

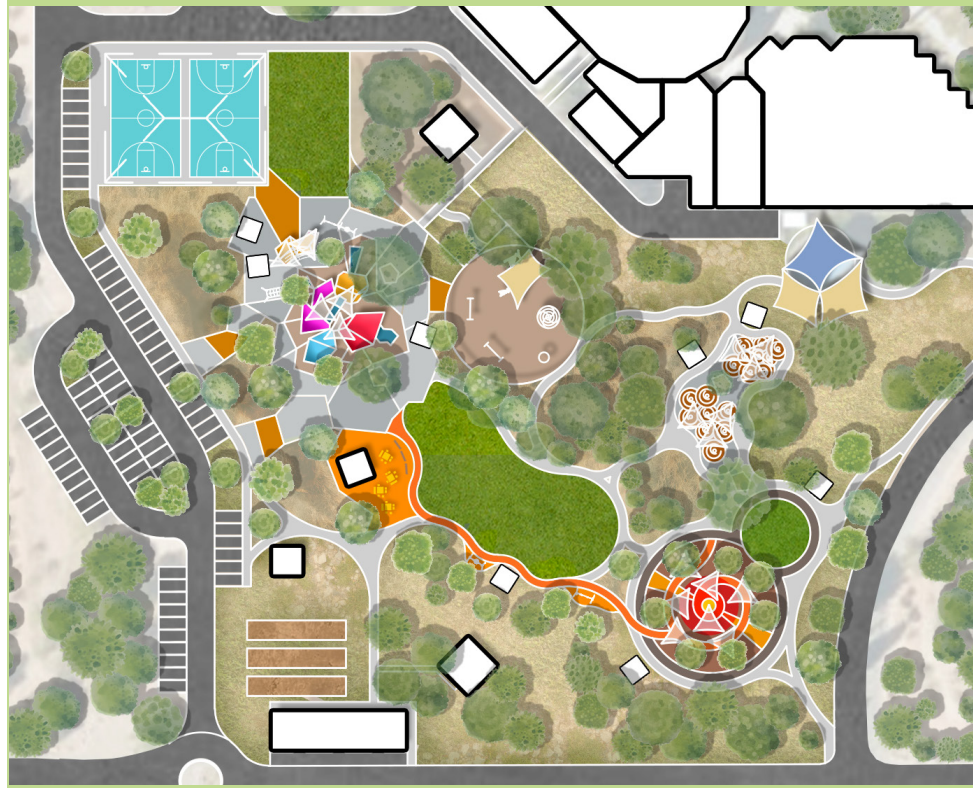


- Nature play
- Walking path and desert landscape integrated with play nodes
- Many smaller dispersed play nodes

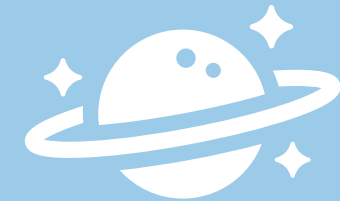


Earth Explorers

Mountains & Geology



- Colorful abstract play features
- Large mound "volcano"
- Central lawn
- Two large play areas



Space Rodeo

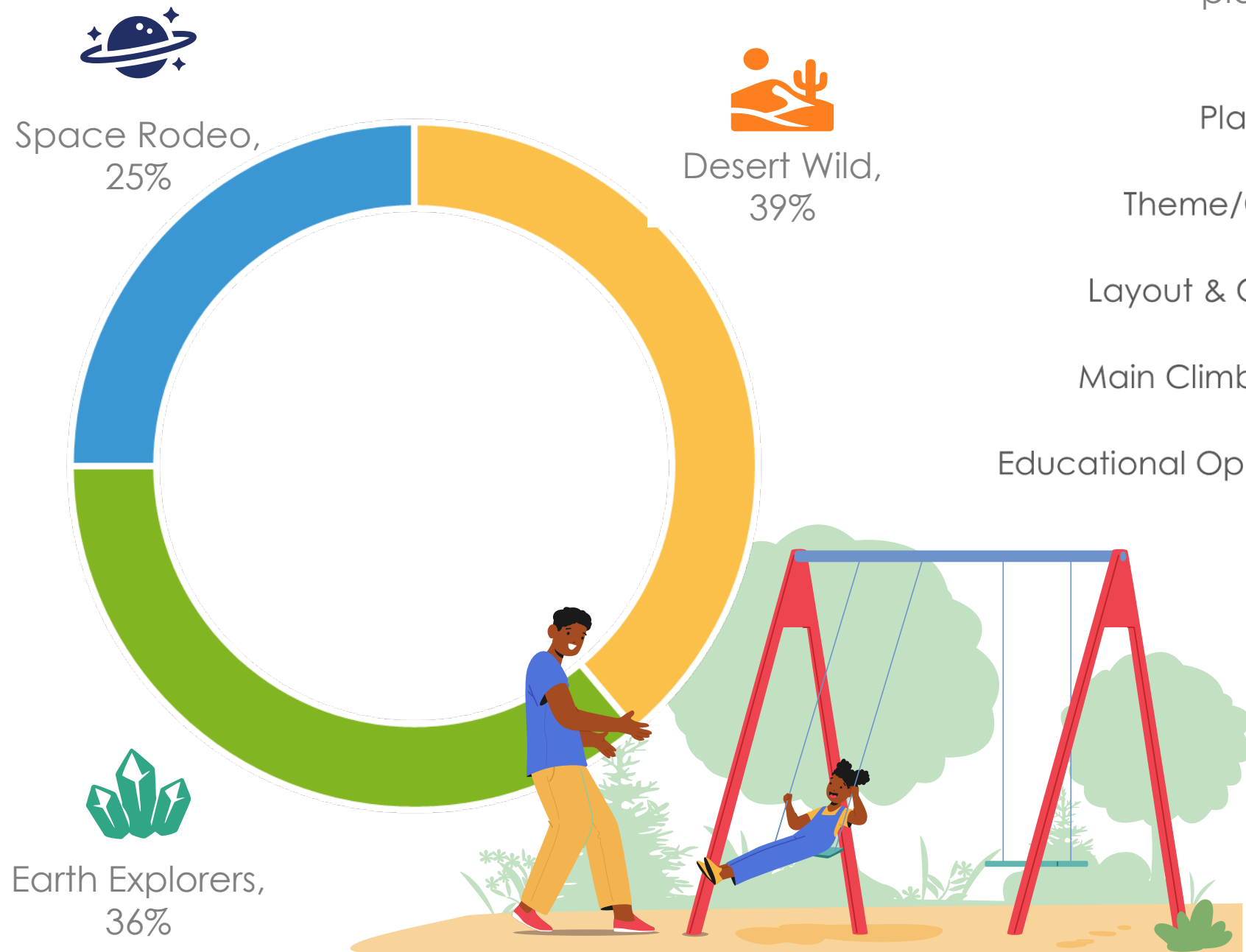
Solar System



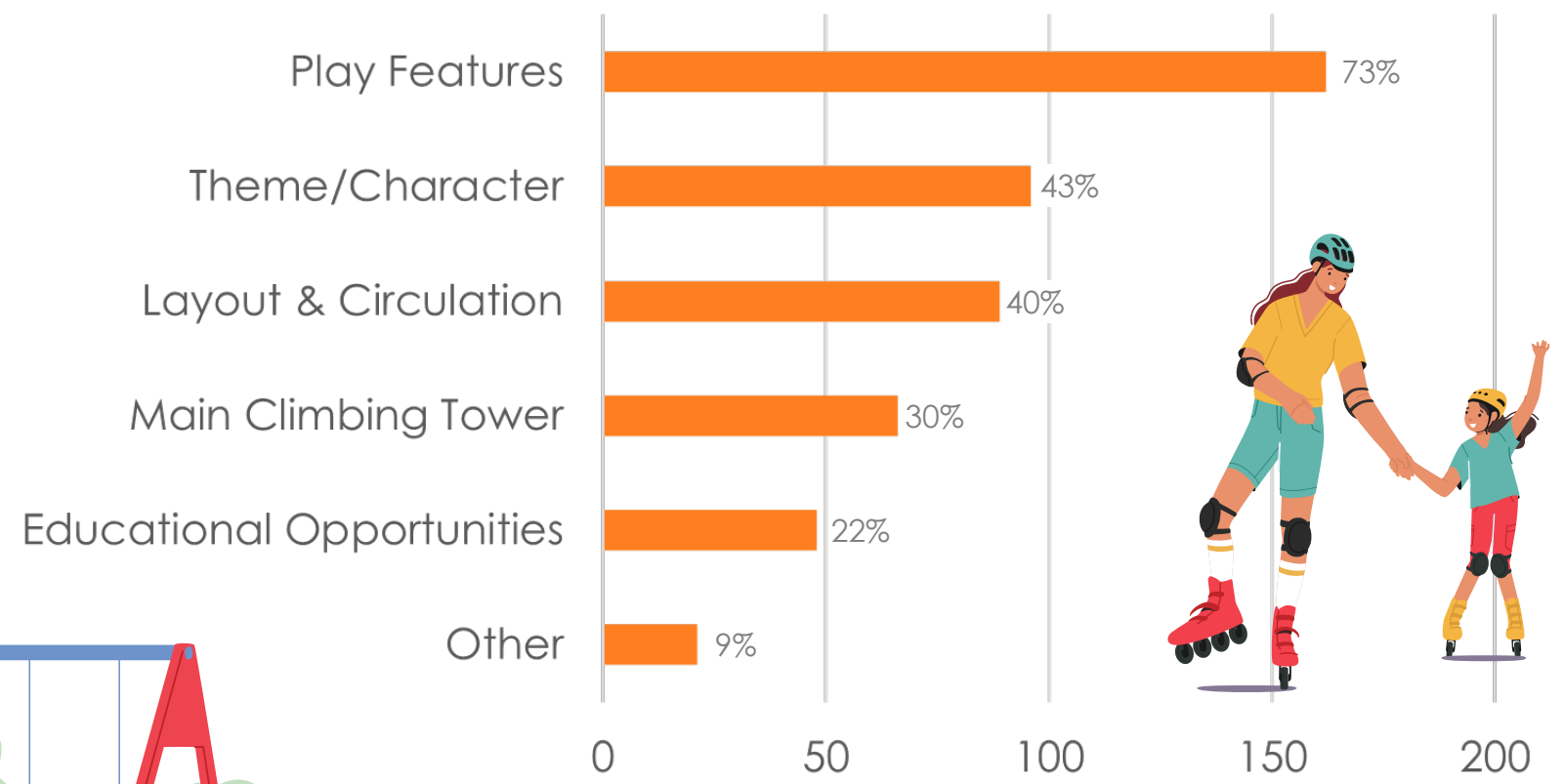
- Colorful abstract play features
- Sensory Garden
- Perimeter walking loop
- Play is in one concentrated area

WHICH PLAYGROUND CONCEPT IS THE MOST POPULAR?

Which Playground Concept Do You Like the Most?



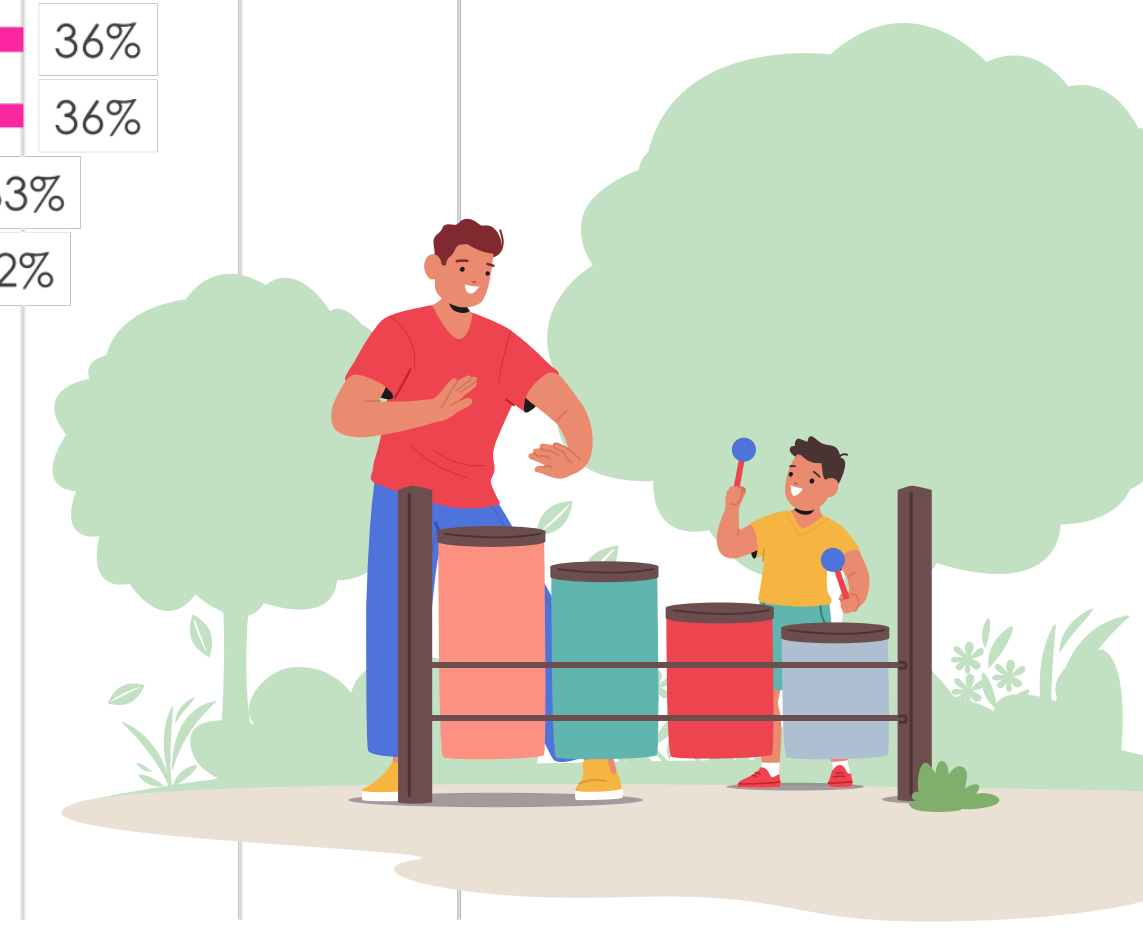
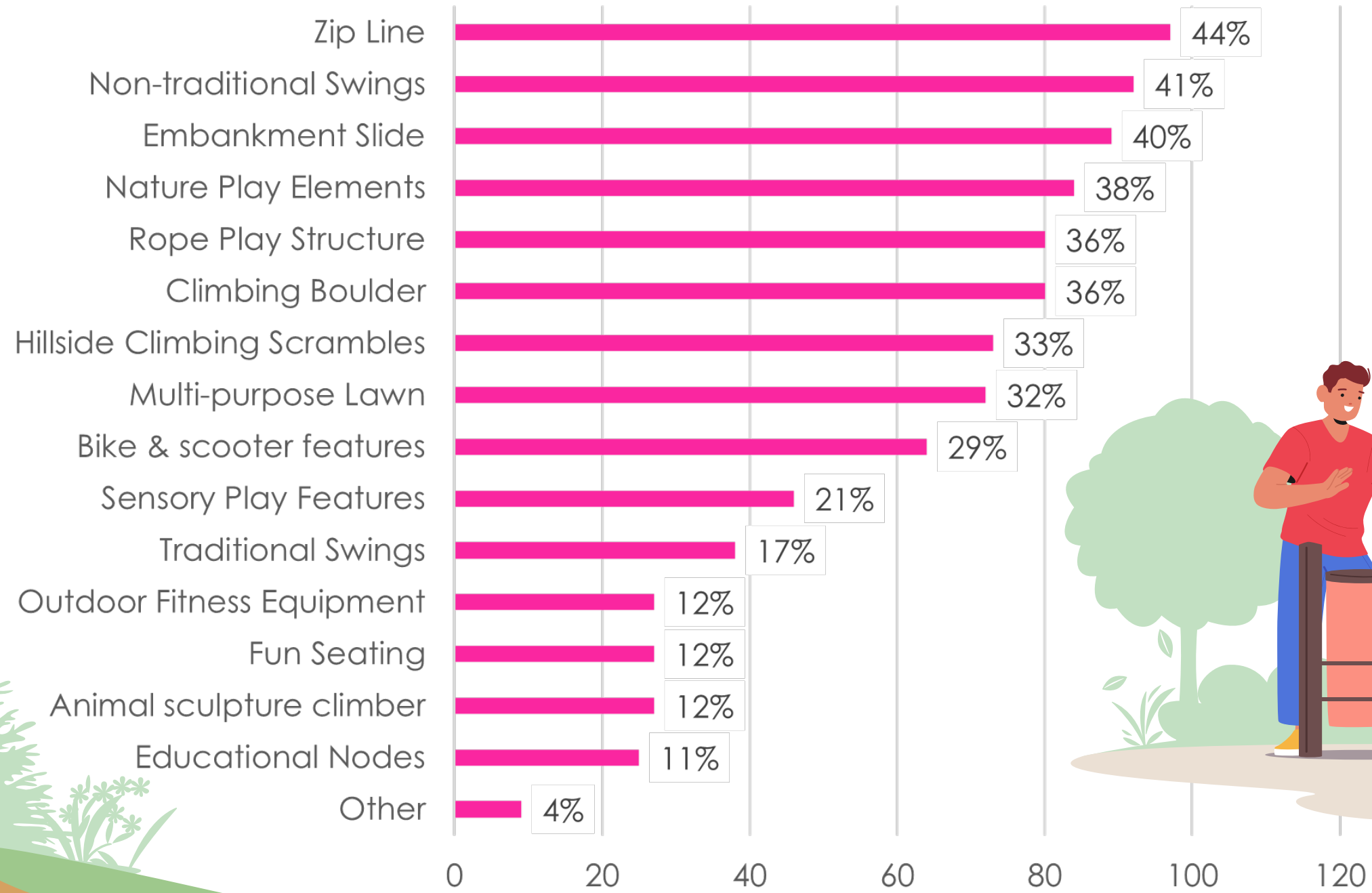
What factors influenced your choice for your favorite playground concept? (Select all that apply)



Other influential factors that were identified included: ample shade, use of natural materials, and aesthetics

WHICH PLAYGROUND FEATURES ARE THE MOST POPULAR?

Which of the following play features would be most important to you and your household? (Select up to five)



WHICH DESERT WILD FEATURES ARE MOST POPULAR?

#1 Saguaro Tower



#2 Nature Play Elements



#3 Cactus Forest



What are your favorite elements of the Desert Wild concept? (select up to three)

Saguaro Tower (play tower that looks like an extremely large saguaro cactus including a slide and ways to climb up)

Nature play elements (including logs and boulders that can be used in different ways for activities like balancing and climbing, for example)

Cactus Forest (wood posts for climbing, balancing, and maze-like play)

Rattlesnake Friends (two slides that are side-by-side and shaped to look like two snakes)

Bridge over "caverns" (bridge or balance beam connecting two mounds along a nature trail)

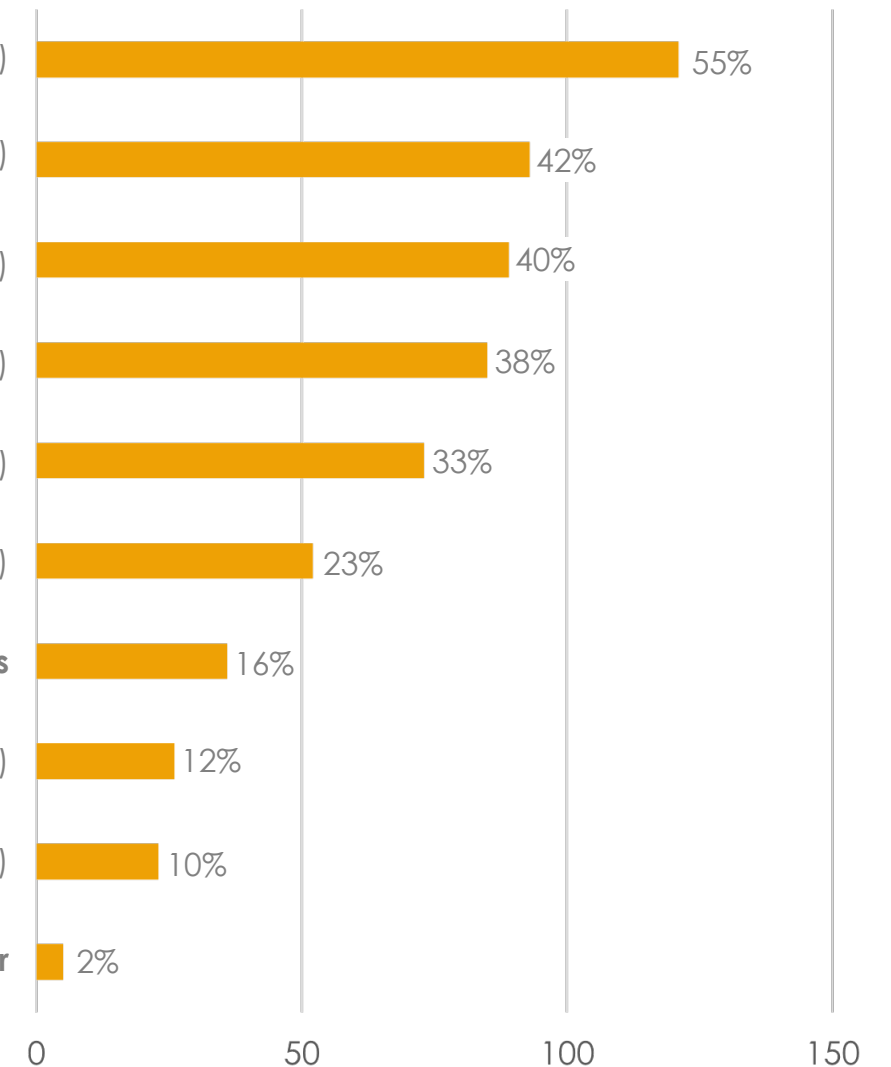
Javelina Rocks (rocks stacked on a small hill to scramble and climb up)

Natural colors for the play equipment and shade sails

Mother Tortoise (landform shaped to look like a large tortoise with baby tortoises)

Ringtail Rock (animal sculpture shaped like a Ringtail that can be climbed on)

Other 2%



WHICH EARTH EXPLORERS FEATURES ARE MOST POPULAR?

#1 Volcano Mountain



#2 Mineral & Gemstone Tower

#3 Multi-purpose lawn



What are your favorite elements of the Earth Explorers concept? (select up to three)

Volcano Mountain (a large hill that has different ways to get to the top of the volcano including a path and boulder scramble)

Mineral and gemstone tower (play tower that looks like an extremely large gemstone including a slide and ways to climb up)

Multi-purpose lawn area

Embankment slides (slides that are along the side of the volcano mound)

Climbing boulder (a stand-alone element that looks like a natural boulder that has beginner and advanced routes to get to the top by rock climbing/bouldering movement)

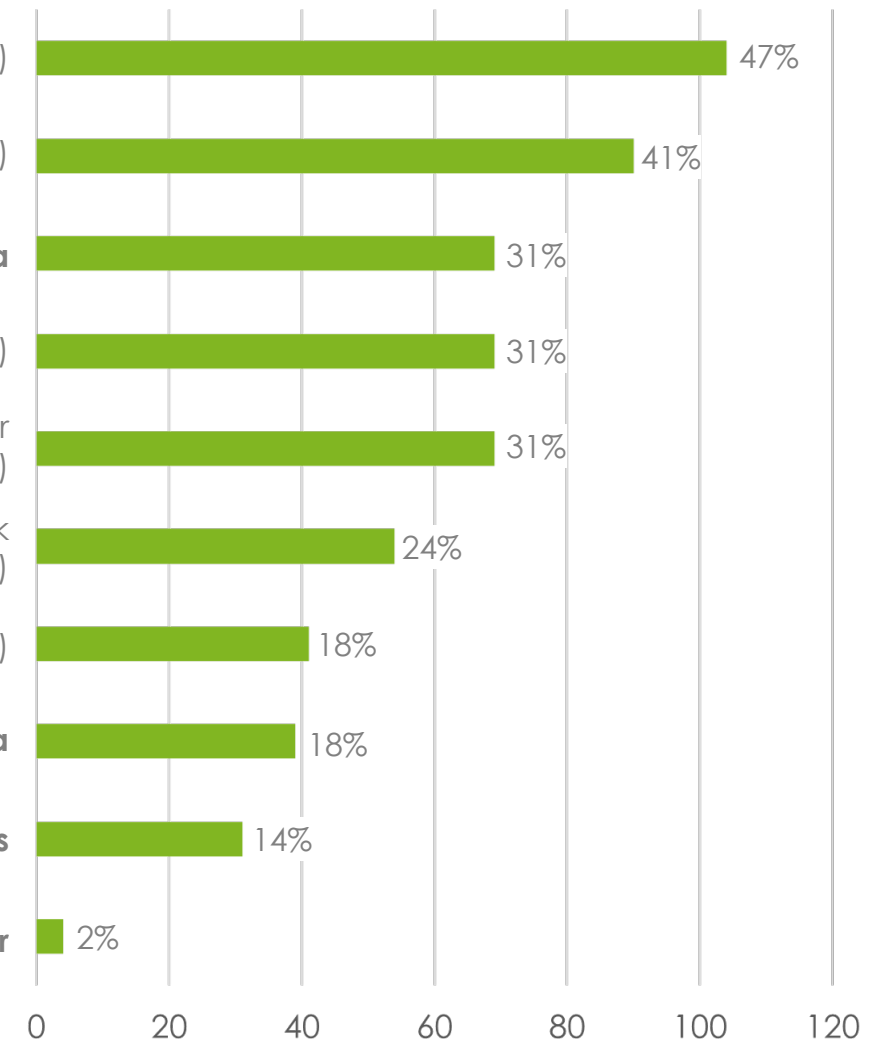
Stalagmite forest (a maze-like play area with sculptural elements that look like stalagmites that can be used for climbing)

Lava fitness trail (a trail with outdoor fitness equipment along it)

Large picnic/gathering plaza

Bright colors for the play equipment and shade sails

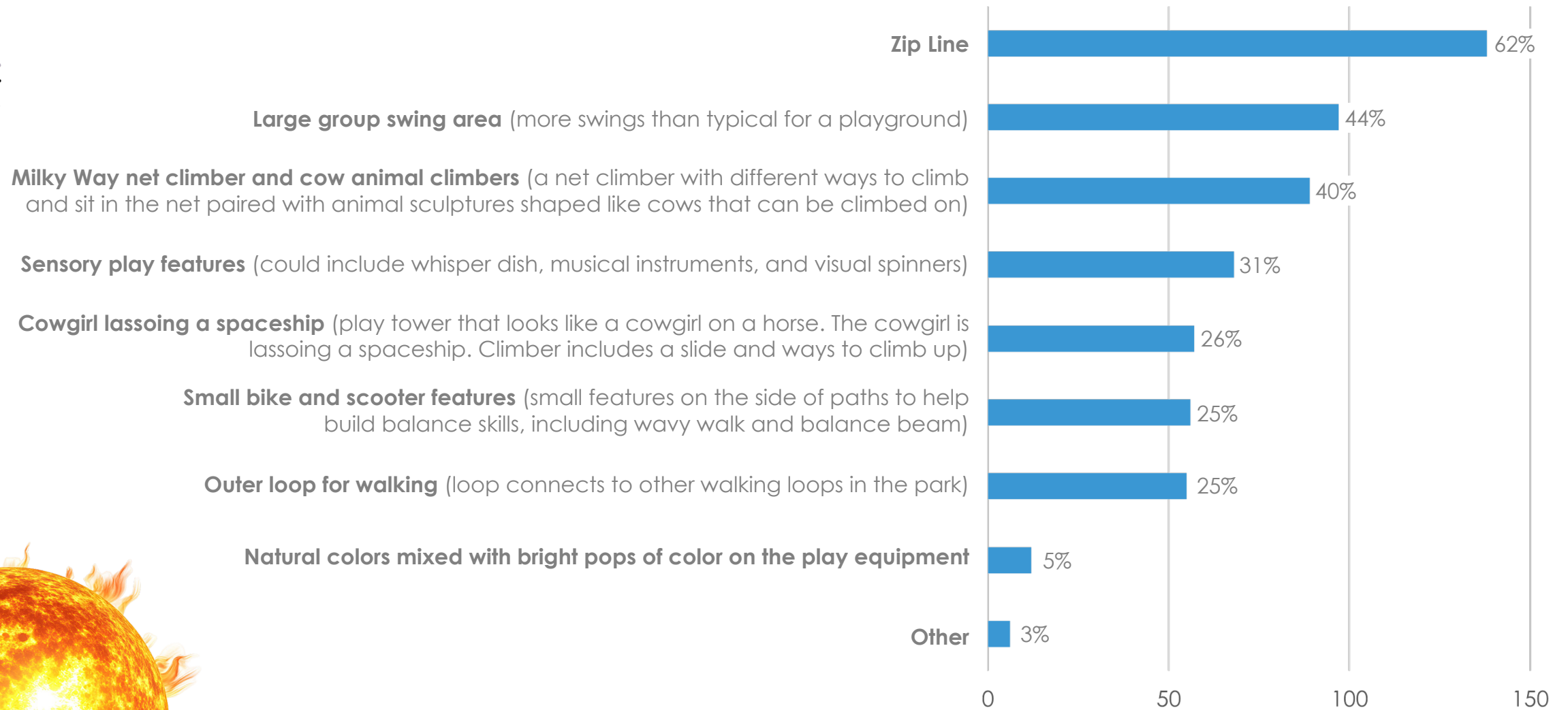
Other 2%



WHICH SPACE RODEO FEATURES ARE MOST POPULAR?



What are your favorite elements of the Space Rodeo concept? (select up to three)



WHAT ELSE DO PEOPLE WANT TO SEE AT THE NEW UDALL PARK PLAYGROUND?

Any further comments or feedback for Parks and Recreation and the Design Team?

The most common requests for the playground were:

1. Maximize shade everywhere
70-80% of responses
2. Add abundant seating near play for caregivers
50-60% of responses
3. Prioritize safety (lighting, visibility, security)
40-50% of responses
4. Ensure accessible, well-placed bathrooms & water fountains
40-50% of responses
5. Ensure sightlines and consolidate play zones
30-40% of responses
6. Serve all age groups
35-45% of responses
7. Include standout features
(zip line, climbing, swings, nature play), **30-40% of responses**

"Please add many coverings over all playground structures—to keep children protected from the sun and prevent play equipment from overheating"

"The two condensed play areas is SO helpful, especially if visiting the play area with a group of kids."

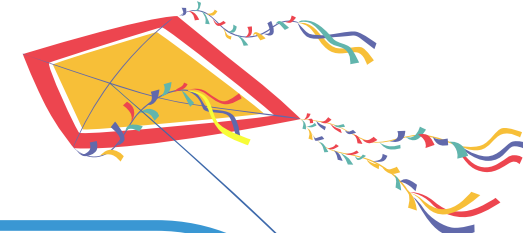
"I really like the bathroom placement between the playground and splash pad. It makes it convenient especially with younger kids"

"I love the idea of a zip-line because none of the Tucson parks near us have one and is always a popular feature among the kids."

"Good lighting is so important to create a feeling of safety"

"Shaded seating for caregivers is a must."

"I love the idea of nature-based play. I think it works for young kids, but also older kids who grow out of the traditional playground structures- and offers something different to other parks nearby."



Other suggestions included:

Use heat-resistant materials, include grass/lawn space, inclusive design for all abilities, combine the desert and space themes, lighting for evening use