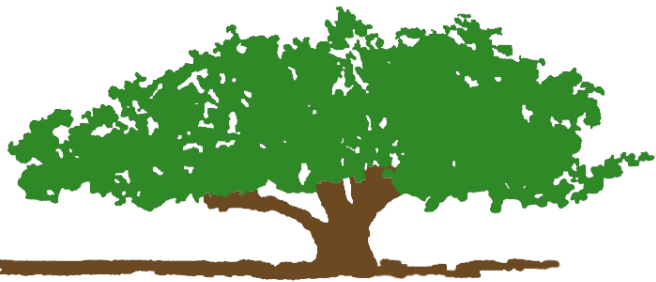


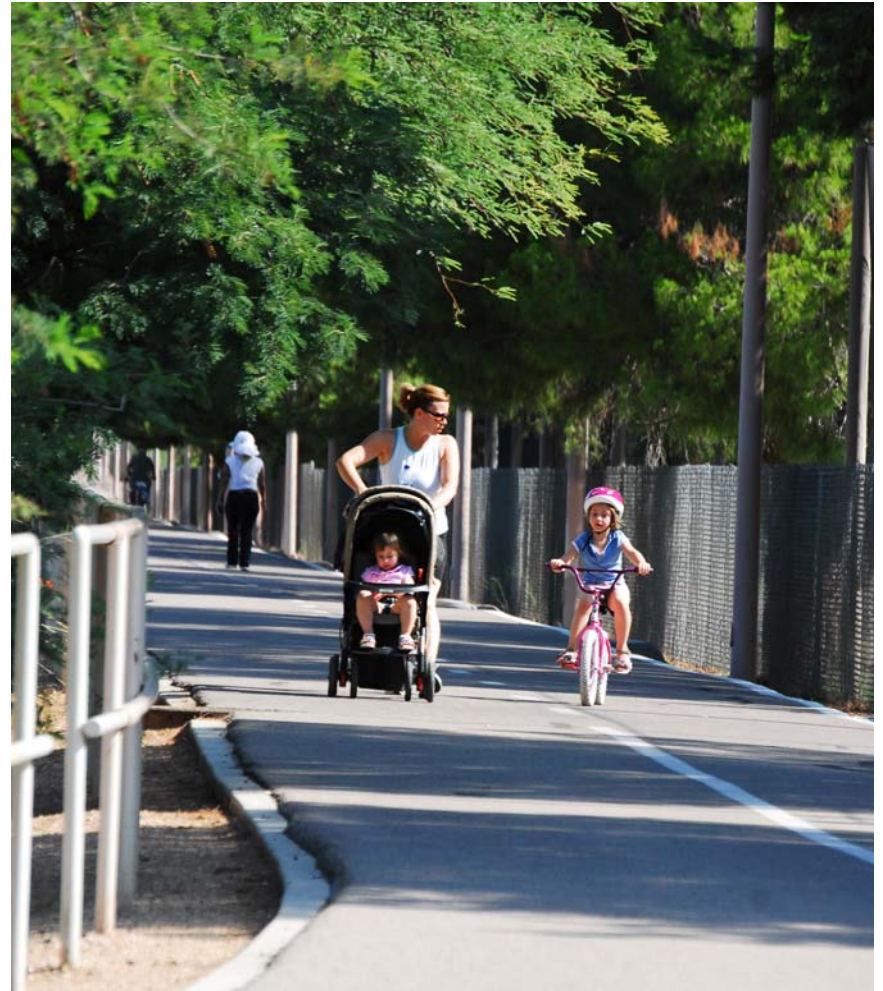
# PR34 Trails and Urban Greenways

## Project Description

Design and construction of segments of the Arcadia, Alamo, Arroyo Chico, Atturbury and El Paso Southwest Greenways. The greenways are included in the Pima Regional Trail System Master Plan. They provide alternate modes of transportation as well as recreational opportunities on a multi-use paved path system that connects schools, parks, shopping, work, tourist attractions and other destinations.



**Tucson Parks and Recreation**



# PR34 Trails and Urban Greenways

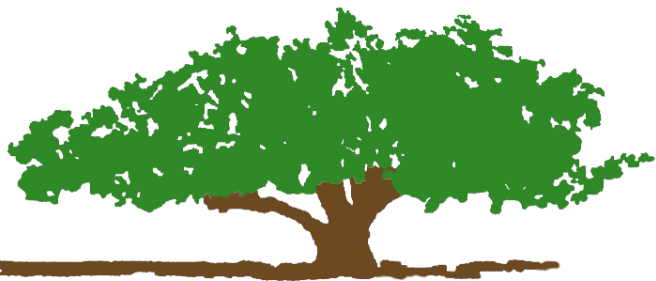
## Funding Request

\$15 million

## Pima County Bond Advisory Committee Review

-PR 34 was presented twice in 2011

-Tentatively approved



**Tucson Parks and Recreation**

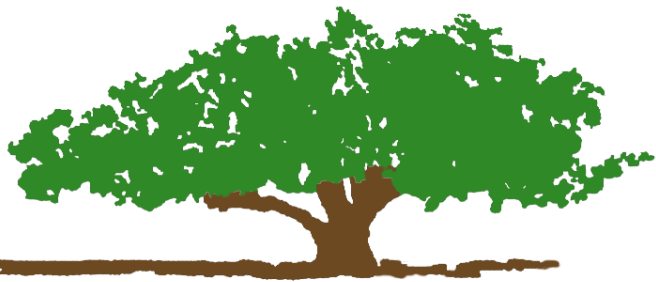
# PR34 Trails and Urban Greenways

Presentation of Planning, Feasibility Analysis and Public Outreach to Date

## Background

Greenway systems have been successfully implemented in other jurisdictions

Examples: Nashville, North Carolina, Ozarks, Portland, Minneapolis



**Tucson Parks and Recreation**





# PR34 Trails and Urban Greenways



Nashville.gov » Parks and Recreation » Greenways and Trails

- Parks and Recreation
- About Us ▶
- Athletics ▶
- Centennial Sportsplex ▶
- Classes ▶
- Community Centers and Recreation ▶
- Cultural Arts ▶
- Friends Groups and Partners
- Golf Courses ▶
- Greenways and Trails ▼
  - Greenways for Nashville [↗](#)
  - Greenways Commission
  - Greenways Plans and Projects
  - Biking
  - Horse Trails
  - Maps
  - News and Events
  - User Rules
  - Water Access and Blueways
- Historic Sites ▶

## Greenways and Trails

### Nashville Greenways

Nashville places a high priority on protecting and linking open space and building greenway trails.

There are over 190 miles of trails in Davidson County!

These include over 50 miles of off-street (primarily paved) multi-use greenway trails and various other types of trails within parks for walking, hiking, mountain biking and equestrian use.

### Trails

Visit our [Maps](#) page for descriptions and locations of individual trails.

For a county-wide view, look at the [front page](#) of the Greenways Brochure for paved trails, and the [back page](#) for unpaved trails.

We also have an interactive map for the [Greenways for Nashville](#) [↗](#).

Greenway efforts are guided by a master plan framework, led by the Greenways Commission and supported by the non-profit friends group, [Greenways for Nashville](#) [↗](#).

The goal is to get a greenway trail within 2 miles of every community for recreation and transportation as well as to conserve green space, particularly floodplains and scenic viewsheds, along county waterways.



Greenways provide a network of trails featuring major open spaces and linking activity centers such as neighborhoods, schools, parks and commercial areas.

Contact:





# PR34 Trails and Urban Greenways

NEWSLETTER | CONTACT  



A coalition of neighborhoods & individuals who want to protect & enhance the Midtown Greenway.

HELP PROTECT YOUR GREENWAY AND MAKE IT EVEN BETTER!

JOIN

DONATE

ABOUT THE GREENWAY

ABOUT THE COALITION

PROJECTS & PROGRAMS

NEWS & DEVELOPMENTS

UPCOMING EVENTS

VOLUNTEER

DONATE

## ABOUT THE COALITION

We're the nonprofit organization that worked to get the Midtown Greenway built.

Not too many years ago, it was a trash-filled trench that was a disgrace to our city. Now, it contains a world-class biking and walking trail that's the envy of cities across the nation. **In fact, the Midtown Greenway trail was recently named the best urban bike trail in the USA!**

**Our work didn't end after the Greenway was built. Now, we work to protect and enhance it.**

Recently, we fought to keep high-voltage overhead power lines out of the Greenway – and we won!

We operate a nightly Trail Watch bike patrol; work to create safer street crossings; and operate programs that help keep the Greenway clean and green.

We raise all of our own funds and receive no operational funding from the government.

We're a coalition of neighborhoods, organizations, and individuals who love the Midtown Greenway and want to protect and enhance it.

Love the Greenway too?



## ▶ ABOUT THE GREENWAY



The Midtown Greenway is a 5.5-mile long former railroad corridor in south Minneapolis with bicycling and walking trails ... [MORE](#)

## ▶ ABOUT THE COALITION



## North Carolina Greenways

HOME WHO WE ARE WHAT WE DO PROJECTS RESOURCES

RESOURCES > MAIN

BOOKS CO-AUTHORED  
BY CHARLES A. FLINK

GREENWAY DEFINITION

GREENWAY BENEFITS

THE HUB & SPOKES  
NETWORK MODEL

LINKS



### The Benefits of Greenways

Trails and greenways provide a variety of benefits that ultimately affect the sustainability of a region's economic, environmental, and social health. These benefits include:

1. [Creating Value and Generating Economic Activity](#)
2. [Improving Bicycle and Pedestrian Transportation](#)
3. [Improving Health through Active Living](#)
4. [Clear Skies, Clean Rivers, and Protected Wildlife](#)
5. [Protecting People and Property from Flood Damage](#)
6. [Enhancing Cultural Awareness and Community Identity](#)

Numerous studies have made the positive link between trails and their benefits abundantly clear. The degree to which a particular type of benefit is realized depends largely upon the nature of the greenway and trail system being implemented.

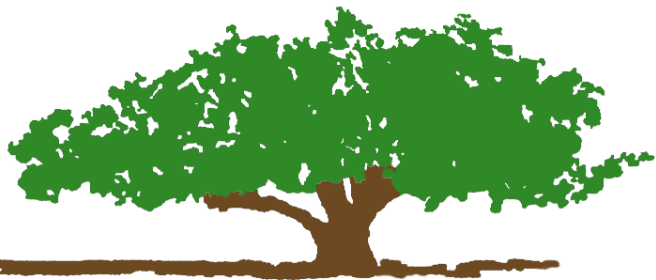
#### Creating Value and Generating Economic Activity

There are many examples, both nationally and locally, that affirm the positive connection between greenspace and property values (1). Residential properties will realize a greater gain in value the closer they are located to trails and greenspace. According to a 2002 survey of recent homebuyers by the National Association of Home Realtors and the National Association of Home Builders, trails ranked as the second most important community amenity out of a list of 18 choices (2). Additionally, the study found that 'trail availability' outranked 16 other options including security, ball fields, golf courses, parks, and access to shopping or business centers. Findings from the *Trust for Public Land's Economic Benefits of Parks and Open Space*, and the *Rails-to-Trails Conservancy's Economic Benefits of Trails and Greenways* (listed below) illustrate how this value is realized in property value across the country.

# PR34 Trails and Urban Greenways

## Joint Planning of Regional Trail System

- Pima County and the City of Tucson jointly created a regional trails master plan
- The Pima Regional Trail System Master Plan includes several different types of trails and paths
- The Loop
- Greenways throughout metro Tucson
- Arroyo Chico, Arcadia, Atturbury, Alamo and the El Paso Southwestern Greenways are included



**Tucson Parks and Recreation**

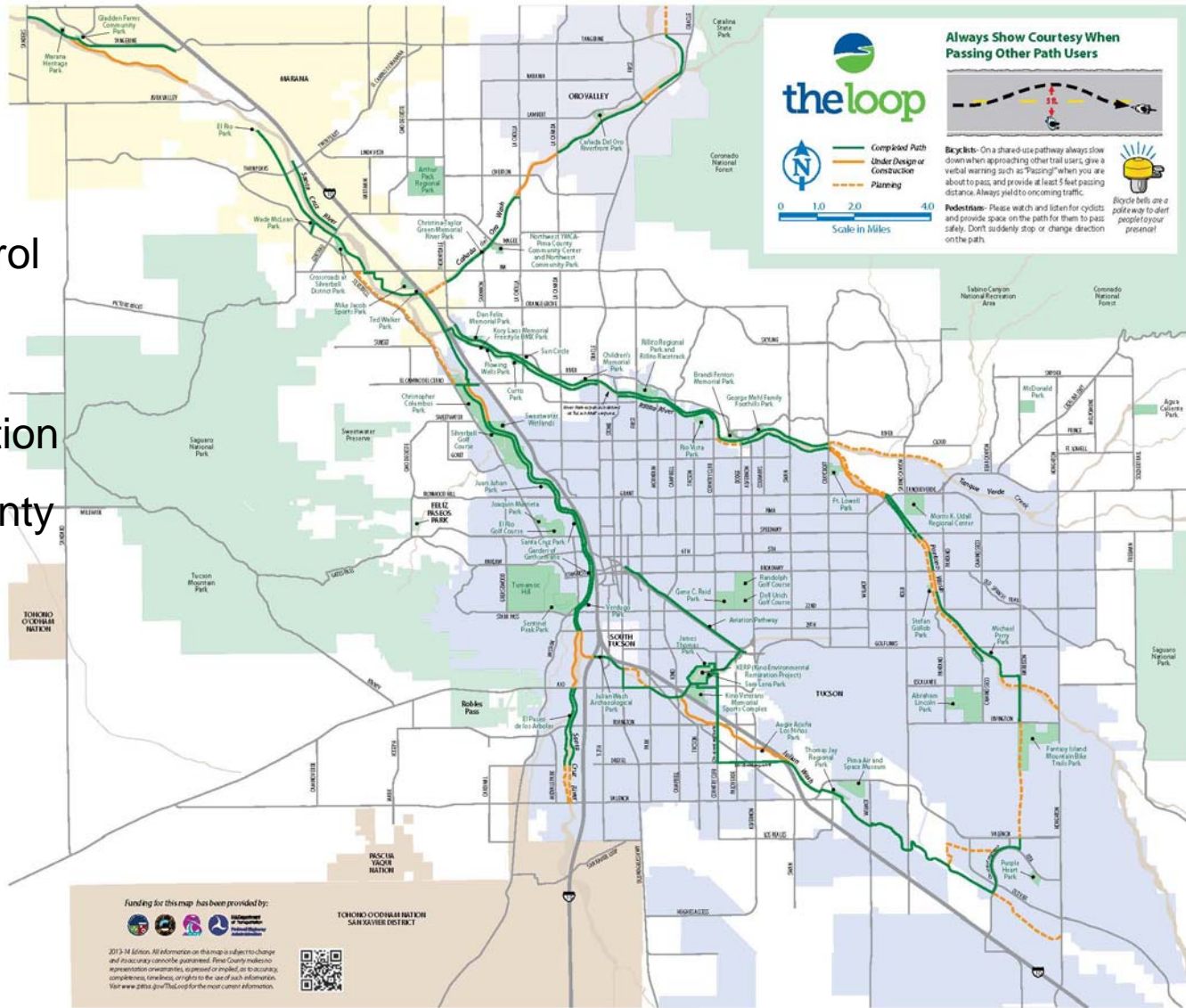




# PR34 Trails and Urban Greenways

## The Loop Funding

- Regional Flood Control District
- Federal Transportation
- Pima County bonds



## The Loop

When completed, The Loop will be a system of multi-use paths connecting the Ballona, Santa Cruz, and Pajarito River Parks with the Julian Wash and Harrison Road Greenways. More than 110 miles of paths have already been completed. The Loop will extend through Marana, Oro Valley, Tucson, and South Tucson. These exciting connections are the result of Pima County's cooperative partnerships with these jurisdictions.

The Loop will connect parks, trailheads, bus and bike routes, workplaces, restaurants, schools, hotels and motels, shopping areas, and entertainment venues. Visitors and Pima County residents can enjoy The Loop on foot, bikes, skates, and horses. If it doesn't have a motor, it's good to go on The Loop.

The Loop is a work in progress and progress is being made every day. Stay up-to-date on developments on The Loop by visiting:

[www.pima.gov/TheLoop](http://www.pima.gov/TheLoop)

**TRAIL SYSTEM MAP**

**the loop**

- riding
- running
- living
- commuting
- shopping

[www.pima.gov/TheLoop](http://www.pima.gov/TheLoop)

- Pima County Board of Supervisors
- Richard E. Crandall, Chairman
- Ally Miller, District 1
- Richard Brown, District 2
- Richard E. Crandall, District 3
- Richard E. Crandall, District 4
- Richard E. Crandall, District 5
- Richard E. Crandall, District 6
- Richard E. Crandall, District 7
- Richard E. Crandall, District 8
- Richard E. Crandall, District 9
- Richard E. Crandall, District 10
- Richard E. Crandall, District 11
- Richard E. Crandall, District 12
- Richard E. Crandall, District 13
- Richard E. Crandall, District 14
- Richard E. Crandall, District 15
- Richard E. Crandall, District 16
- Richard E. Crandall, District 17
- Richard E. Crandall, District 18
- Richard E. Crandall, District 19
- Richard E. Crandall, District 20
- Richard E. Crandall, District 21
- Richard E. Crandall, District 22
- Richard E. Crandall, District 23
- Richard E. Crandall, District 24
- Richard E. Crandall, District 25
- Richard E. Crandall, District 26
- Richard E. Crandall, District 27
- Richard E. Crandall, District 28
- Richard E. Crandall, District 29
- Richard E. Crandall, District 30
- Richard E. Crandall, District 31
- Richard E. Crandall, District 32
- Richard E. Crandall, District 33
- Richard E. Crandall, District 34
- Richard E. Crandall, District 35
- Richard E. Crandall, District 36
- Richard E. Crandall, District 37
- Richard E. Crandall, District 38
- Richard E. Crandall, District 39
- Richard E. Crandall, District 40
- Richard E. Crandall, District 41
- Richard E. Crandall, District 42
- Richard E. Crandall, District 43
- Richard E. Crandall, District 44
- Richard E. Crandall, District 45
- Richard E. Crandall, District 46
- Richard E. Crandall, District 47
- Richard E. Crandall, District 48
- Richard E. Crandall, District 49
- Richard E. Crandall, District 50
- Richard E. Crandall, District 51
- Richard E. Crandall, District 52
- Richard E. Crandall, District 53
- Richard E. Crandall, District 54
- Richard E. Crandall, District 55
- Richard E. Crandall, District 56
- Richard E. Crandall, District 57
- Richard E. Crandall, District 58
- Richard E. Crandall, District 59
- Richard E. Crandall, District 60
- Richard E. Crandall, District 61
- Richard E. Crandall, District 62
- Richard E. Crandall, District 63
- Richard E. Crandall, District 64
- Richard E. Crandall, District 65
- Richard E. Crandall, District 66
- Richard E. Crandall, District 67
- Richard E. Crandall, District 68
- Richard E. Crandall, District 69
- Richard E. Crandall, District 70
- Richard E. Crandall, District 71
- Richard E. Crandall, District 72
- Richard E. Crandall, District 73
- Richard E. Crandall, District 74
- Richard E. Crandall, District 75
- Richard E. Crandall, District 76
- Richard E. Crandall, District 77
- Richard E. Crandall, District 78
- Richard E. Crandall, District 79
- Richard E. Crandall, District 80
- Richard E. Crandall, District 81
- Richard E. Crandall, District 82
- Richard E. Crandall, District 83
- Richard E. Crandall, District 84
- Richard E. Crandall, District 85
- Richard E. Crandall, District 86
- Richard E. Crandall, District 87
- Richard E. Crandall, District 88
- Richard E. Crandall, District 89
- Richard E. Crandall, District 90
- Richard E. Crandall, District 91
- Richard E. Crandall, District 92
- Richard E. Crandall, District 93
- Richard E. Crandall, District 94
- Richard E. Crandall, District 95
- Richard E. Crandall, District 96
- Richard E. Crandall, District 97
- Richard E. Crandall, District 98
- Richard E. Crandall, District 99
- Richard E. Crandall, District 100



# The Greenway Projects included in PR34

*Arroyo Chico Urban Greenway*

*Arcadia Urban Greenway*

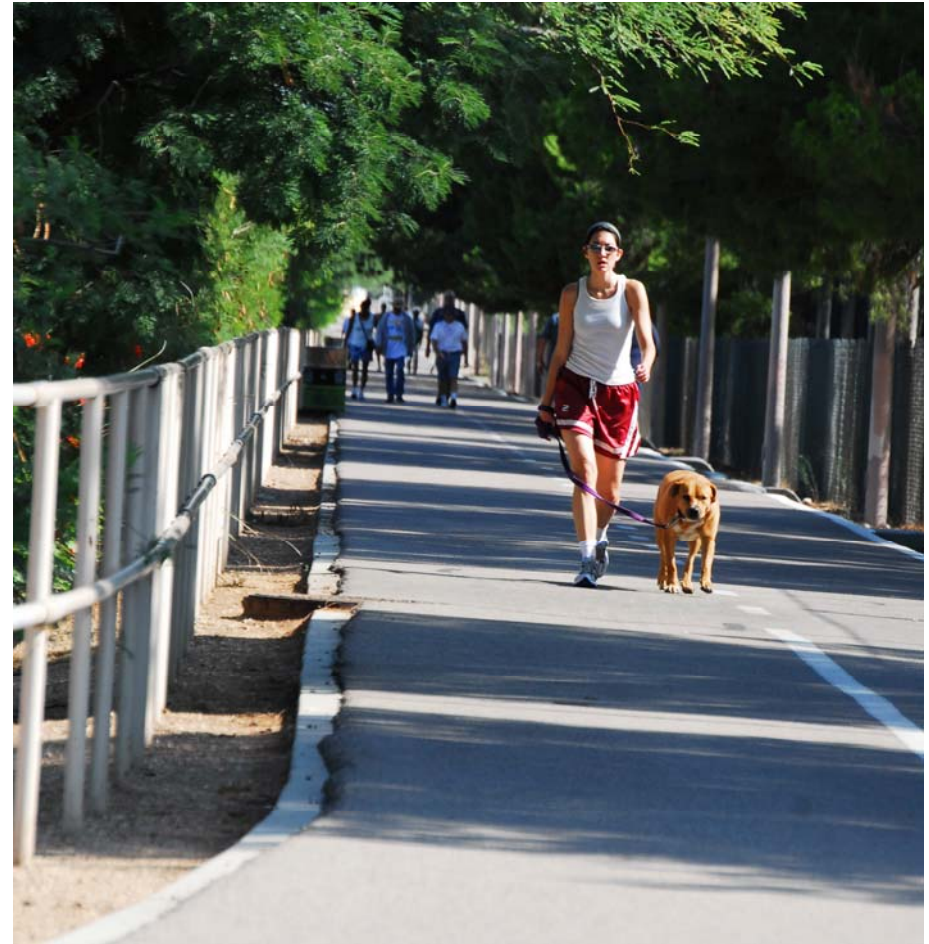
*Alamo Urban Greenway*

*Atturbury Urban Greenway*

*El Paso Southwestern Greenway*

## **Feasibility, Planning and Public Outreach**

- Planning for each of the greenways is complete.
- Public outreach for each of the greenways has occurred.
- The proposed greenways are supported by the public.
- Construction of the greenways has happened incrementally by segments over time using a variety of funding sources including Tucson impact fees, County bonds, CDBG, federal transportation funds.



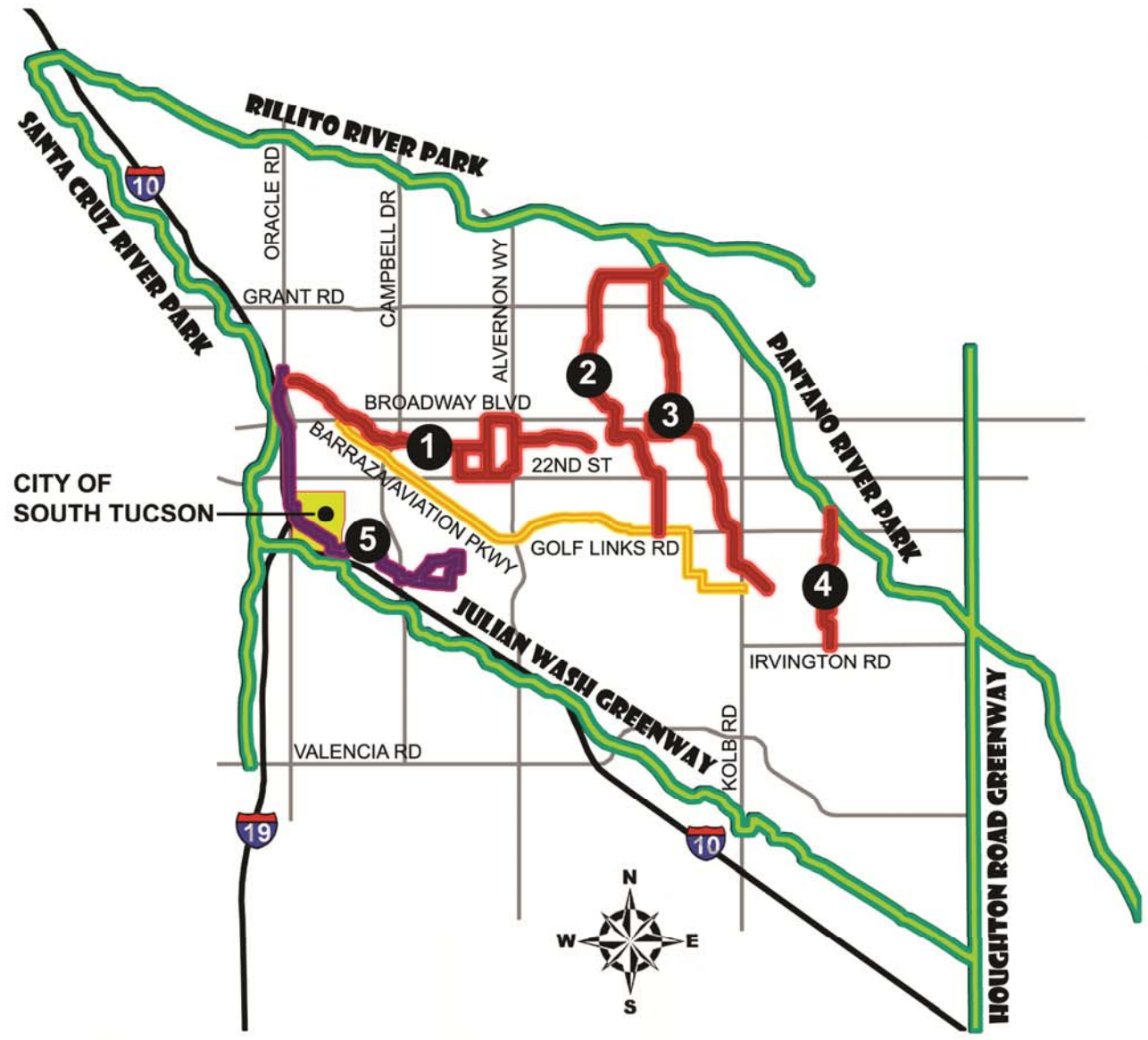


**CITY OF TUCSON  
PIMA COUNTY  
BOND PROJECT PR34**

**URBAN  
GREENWAYS**

**LEGEND**

-  URBAN LOOP
-  BARRAZA/AVIATION & GOLF LINKS PATH
-  ORIGINAL PROPOSAL
-  ADDITIONAL SOUTHSIDE GREENWAY
- 1** ARROYO CHICO URBAN GREENWAY
- 2** ARCADIA URBAN GREENWAY
- 3** ALAMO URBAN GREENWAY
- 4** ATTURBURY URBAN GREENWAY
- 5** EL PASO SOUTHWESTERN GREENWAY



# Arroyo Chico Urban Greenway

**CONNECT REID PARK**



**THROUGH CENTRAL  
NEIGHBORHOODS**

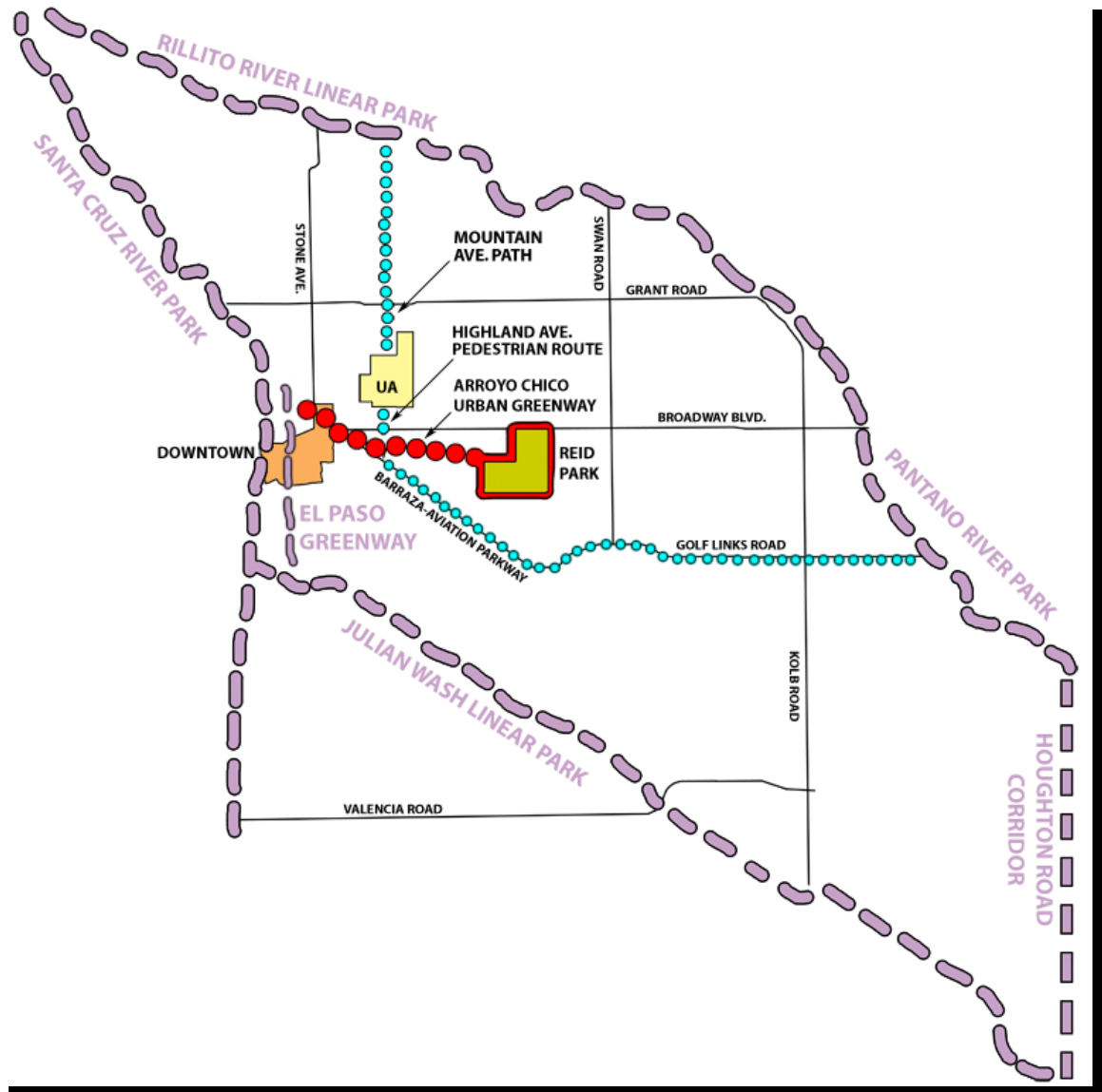


**TO DOWNTOWN**



# Arroyo Chico Urban Greenway

The Arroyo Chico Urban Greenway supports the regional trail system by connecting residents to The Loop, planned bicycle boulevards, the Barraza Aviation Parkway Path and the El Paso SW Greenway.





# NOT A NEW IDEA

The concept of a path following the Arroyo Chico between Reid Park and downtown has existed for a long time.

- 2007** — Downtown Infrastructure Study
- 2004** — Arroyo Chico Greenbelt Bicycle & Pedestrian System Kino Parkway to Parkway Terrace
- 1996** — Arroyo Chico Detention Basin Project
- 1992** — Arroyo Chico Grade Separation Demonstration Project
- 1986** — Arroyo Chico Area Plan

**Green Space**  
existing  
opportunity  
planned  
see attachment for site descriptions

**planning report**

Planning Study  
**ARROYO CHICO GRADE SEPARATION DEMONSTRATION PROJECT**  
City of Tucson  
August 1992

prepared by  
**PARSONS BRINCKERHOFF**  
with  
The Planning Center; GRC Consultants, Inc.; Corky Poster; and Linda Haworth

**E 5.1 Alternatives**

# CONNECTIVITY

## Arroyo Chico Urban Greenway Connects to Cultural, Educational, Recreational and Commercial Community Resources

Cherry Fields  
UA Sports Complex  
UA Greenspace  
Snake Bridge  
Basket Bridge  
Iron Horse Park  
Barrio San Antonio Park  
Gateway Park  
Downtown Parks  
Sonoran Desert and Origins Parks  
Gene C. Reid Park  
Reid Park Zoo  
Wild Life Corridor  
1 Park and Ride Lot  
Bus Stops  
Randolph Golf Course  
Double Tree Hotel  
Shopping Centers  
2 Historic Districts  
More than 15 Schools Including:  
Tucson High School  
St. Ambrose School  
Tucson International Academy  
Miles Exploratory Learning Center  
St. Marks Preschool  
Robison Elementary School  
Kinder Care Learning Center  
Montessori Schoolhouse  
Amerischools Academy



# SEGMENT STATUS

The Arroyo Chico Greenway is being constructed incrementally as funding becomes available.

- Reid Park Segment – complete
- Country Club to Treat Ave – funded for design and construction
- Treat Ave. to Tucson Blvd – designed, shovel ready
- Tucson Blvd to Parkway Terrace – complete
- Parkway Terrace to Kino Detention Basins – funded for concept design and route finalization
- Kino Detention Basin Segment – complete
- Basket Bridge to Snake Bridge at Iron Horse Park – complete
- Iron Horse Park to Toole – funded through Downtown Links



*Reid Park Segment*



*Sabbar Shriner Segment*



# Arcadia Urban Greenway

---

Glenn St. to Golf Links Road



# Process

---

- Aerial Analysis
  - Conceptual Route
- Site Visit
  - Ground-Truthed Alignment
- Coordination with Public Agencies/Private Stakeholders;  
Public Involvement
  - Final Master Plan

# Parks

---

- On Route

- Rillito River Park
- Alamo Wash Park
- Pinecrest Park
- Swanway Park
- 20-30 Park
- Wilshire Park
- Mesa Village Park

- Near Route

- Ft. Lowell Park
- Freedom Park



# Schools

---

- On Route

- Rincon High
- Vail Middle School
- Corbett Elementary

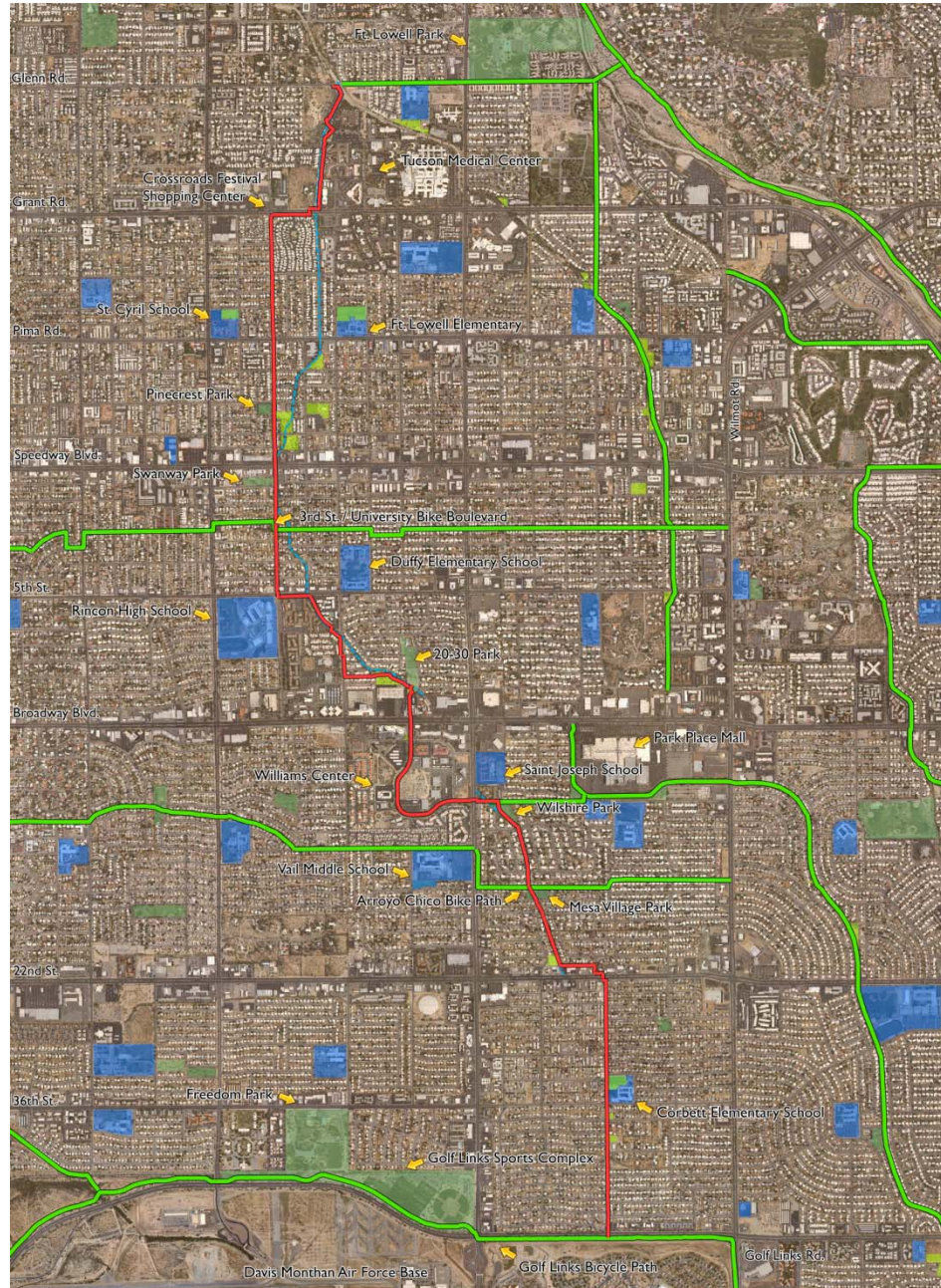
- Near Route

- Ft. Lowell Elementary
- St. Cyril
- Duffy Elementary
- St. Joseph

# Other Destinations

---

- On Route
  - TMC
  - Crossroads Festival Shopping Area
  - The Art Institute
  - Oregano's
  - Target
  - Williams Center
  - Sauce/Pei Wei
  - Davis-Monthan Air Base
- Near Route
  - Summit Hut
  - Char's Thai
  - IHOP
  - Fed-Ex Kinko's
  - Dry Creek Outfitters
  - Park Mall



Arcadia Greenway





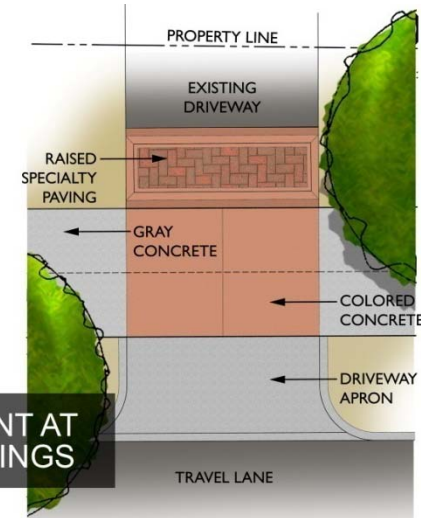
Glenn to Grant





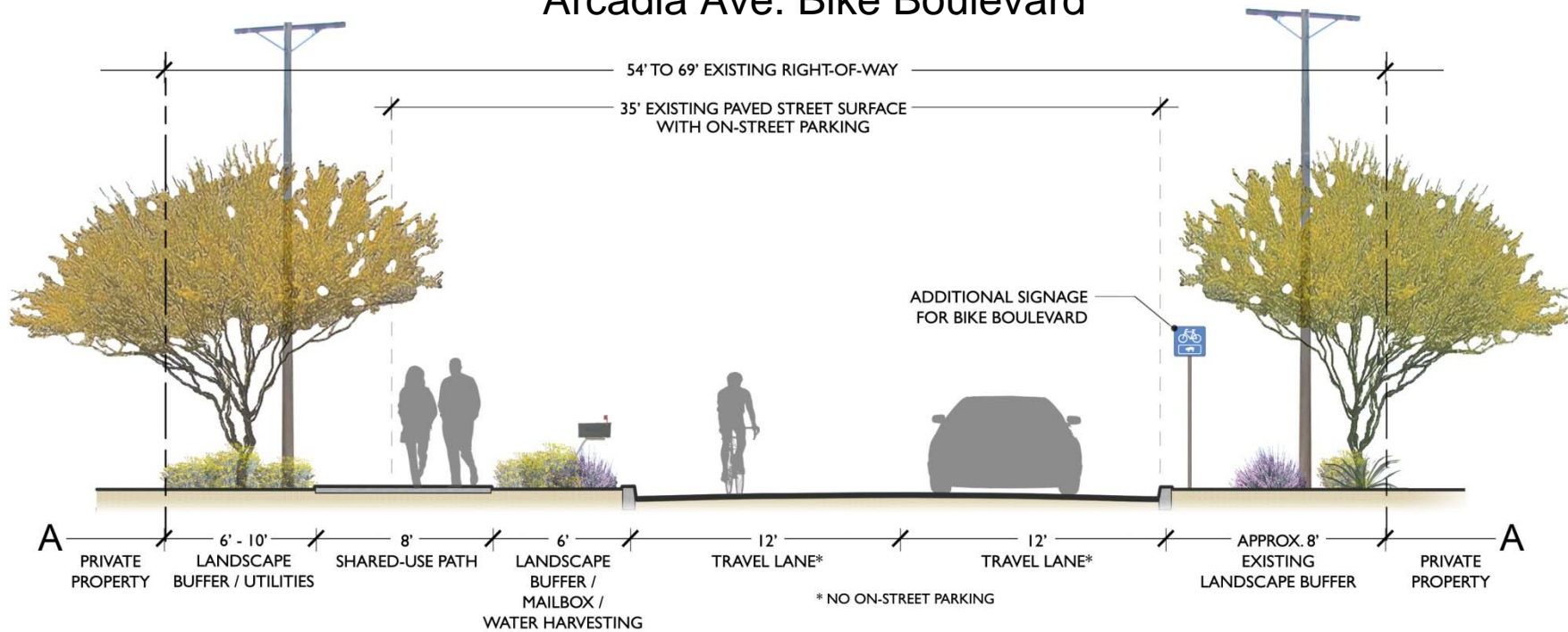
Grant to Pima





**SAFETY TREATMENT AT DRIVEWAY CROSSINGS**

## Arcadia Ave. Bike Boulevard







Pima to Speedway





Speedway to 5<sup>th</sup> St.





5<sup>th</sup> St. to Broadway



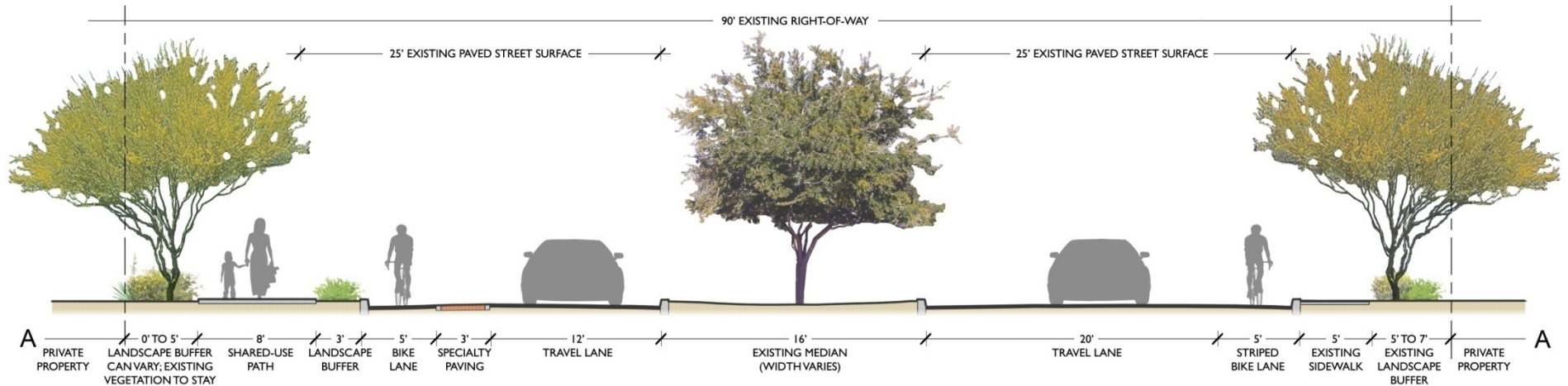


Broadway to 16<sup>th</sup> St.

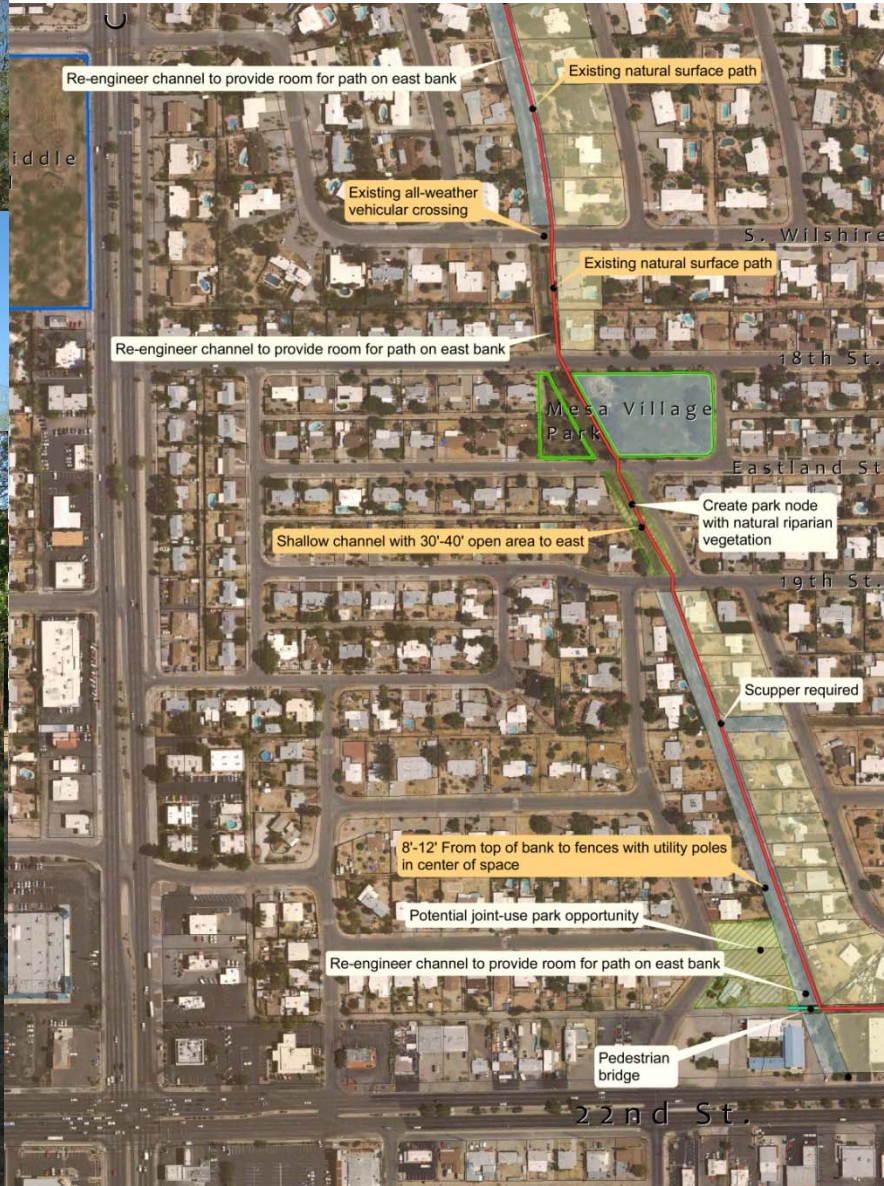




## Williams Center Segment







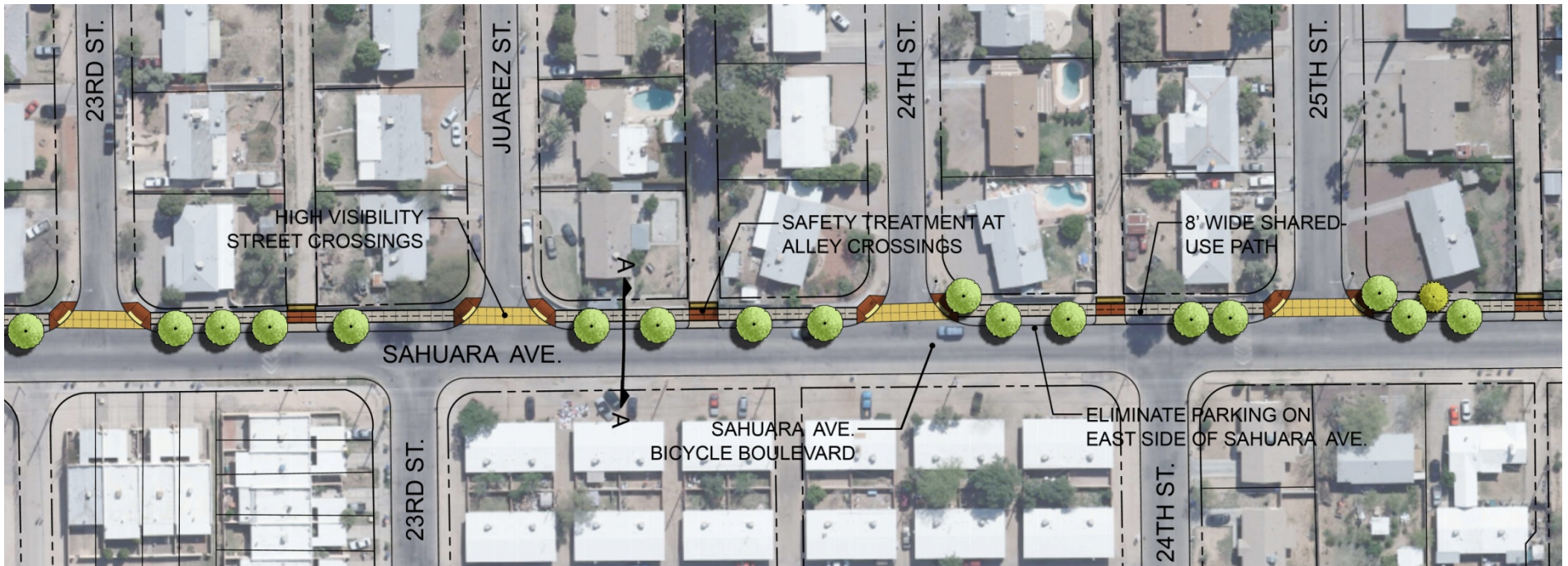
16<sup>th</sup> St. to 22<sup>nd</sup> St.



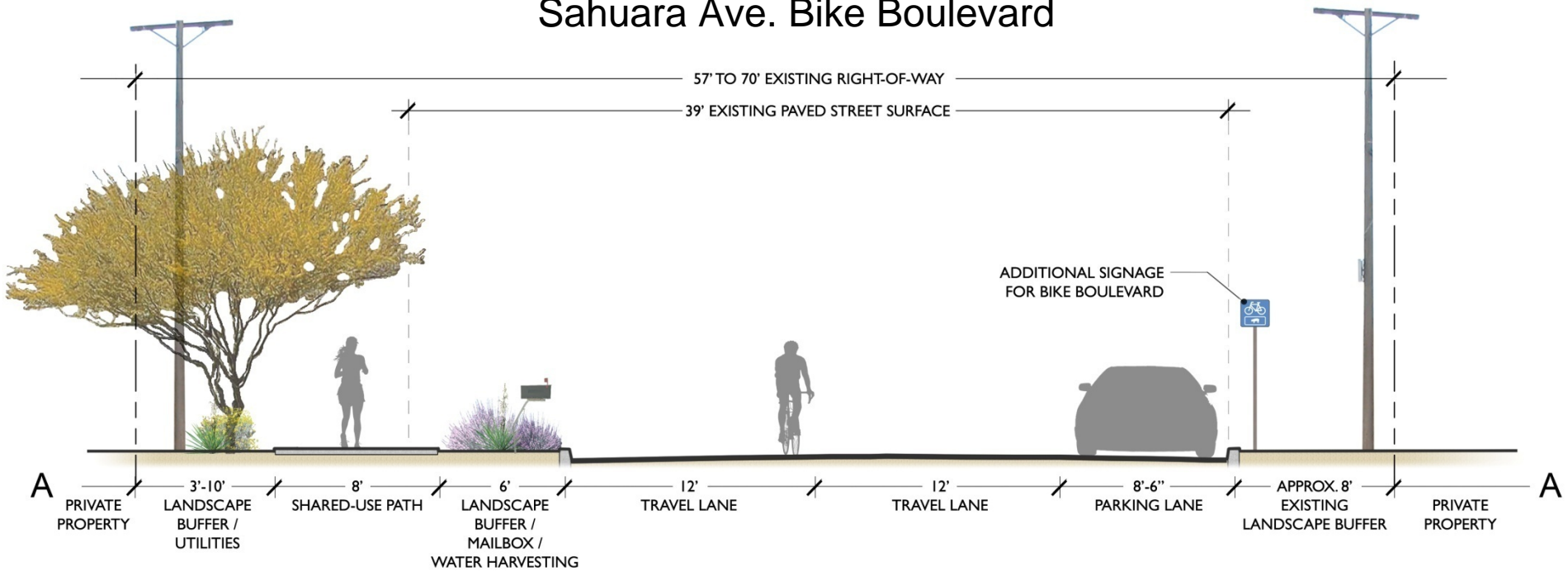


22<sup>nd</sup> St. to 29<sup>th</sup> St.





## Sahuara Ave. Bike Boulevard







29<sup>th</sup> St. to Golf Links





Greenway Gateway Node

# Atturbury Greenway

---

Irvington Road to Pantano River Park





# Atturbury Greenway

Irvington Road to Pantano River Park

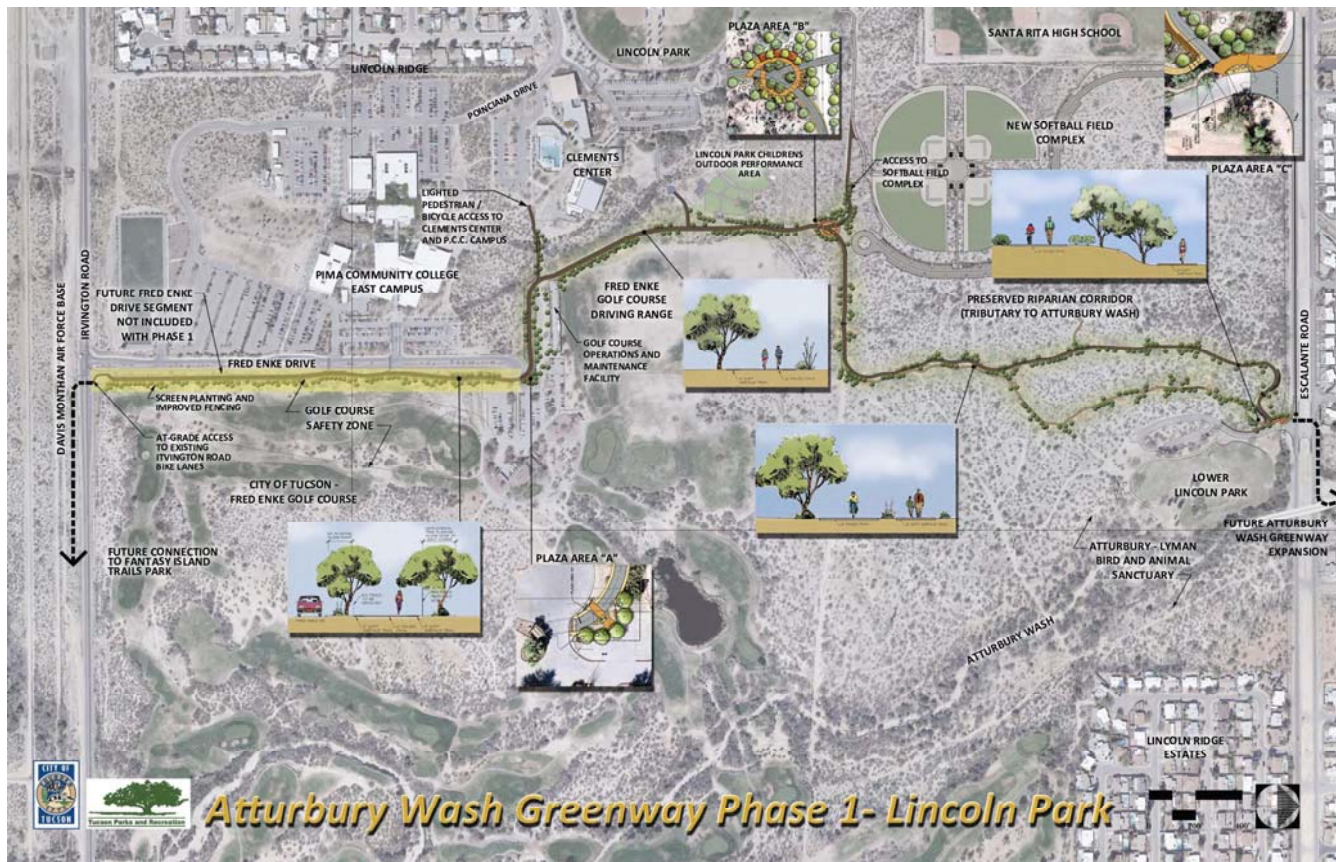


Atturbury Greenway is master planned.  
Public Input Was Gathered.



# Atturbury Greenway

Phase 1 – Fred Enke Drive to Escalante Road  
Lincoln Park Segment is complete



The Lincoln Park Segment was constructed with 2004 Pima County bonds

# Atturbury Greenway

---

Phase 1 – Lincoln Park Segment is complete



Construction  
of the Lincoln  
Park  
Segment



# Alamo Greenway

---

Planning is complete. Master Plan in final draft.

# El Paso Southwestern Greenway

---

Planning is complete. Public input has been gathered.  
Master Plan is available on TDOT's website.

# PR34 Trails and Urban Greenways

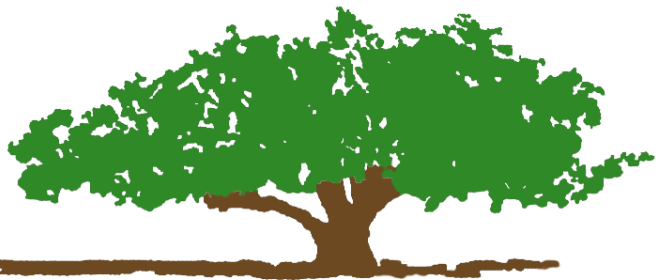
## Feasibility, Planning and Public Outreach

The greenways funded in PR34 are planned, ground truthed and feasible.

Planning is complete for all the greenways.

Public input has been gathered.

Segments of these greenways are already constructed using City of Tucson Impact Fees, Pima County 2004 bonds, Federal Transportation funds, Regional Transportation Authority funds or Community Development Block Grants



**Tucson Parks and Recreation**

