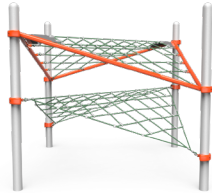


# Dave Bang Playground Proposal for McCormick Park

## Description of Play Elements

### TIANZI™ TWIN OVERLAY



Two nets offer a layered climbing experience with grid-patterned design and strategically placed openings to climb through. Complete with an Angled Flag, this component promises challenge and a sense of accomplishment to every daring climber.

### RAPPEL POLE



This simple pole adds new challenge to rope-based products as kids slide down or climb up. Built for compatibility with rope products such as Naica, kids are able use this classic component to strengthen their physical skills.

### PLAYHILLS ALPINE TRAIL



Featuring climbing rope, molded rubber tri-mounts, and handholds, the many paths of Alpine Trail challenge strength and coordination as kids strive to reach the top of this hill. The base of the hill is

located at transfer-level height and is angled so all users can easily mount/dismount the climber. Climbing ropes are also located beneath the hill, allowing kids to climb and socialize at the ground level.

#### PLAYHILLS RAIL TRAIL



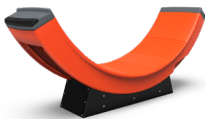
Three steel rails create a daring opportunity for adventurers on Rail Trail, as kids can trek up or back down the hills using them for support. The base of the hill features angled design at transfer-level height, allowing kids of all ability levels to easily mount/dismount the equipment. Climbing ropes are also located beneath the hill to provide ground-level climbing and social play.

#### PLAYHILLS DUO HUB



This grid-patterned net with flextread inserts allows kids to climb and socialize on the top, while a climbing net between the two posts allows kids to climb and socialize at the ground level.

#### ARCH RIDER



Arch Rider's innovative design offers a distinct motion play experience that inspires all kinds of cross-generational fun. Located at transfer-level height, kids of any ability can board and ride alongside their friends. The ridged surface and grip around the edges provide stability for climbers as they scale and rock the sides. Foot pedals are also located at the base, allowing caregivers or friends to easily create extra movement.

Studies show that cross-generational interactions have lasting positive impacts, including improved social perceptions, strengthened relationships, and a higher quality of life for both children and adults. By incorporating our multigenerational play equipment into your project's design, you're able to create a space where authentic memories are made, and lasting connections are forged.