



***St. Augustine Cathedral
Proposed Solar Canopy Installation
Historic Review Board Presentation
SD-1123-00131***

SOLON 

Project Overview

- Project History
 - Site expansion completed in ~2020.
 - Parking canopies were part of original project to meet RNA and zoning requirements.
 - Canopies ultimately removed after discussion with CoT about future parking garage.
- Project Details
 - 298.92 kW – DC, 232 kW – AC ; 564 EA solar panels
 - 92% energy usage offset
 - 2 parking canopies, 92 shaded parking spaces

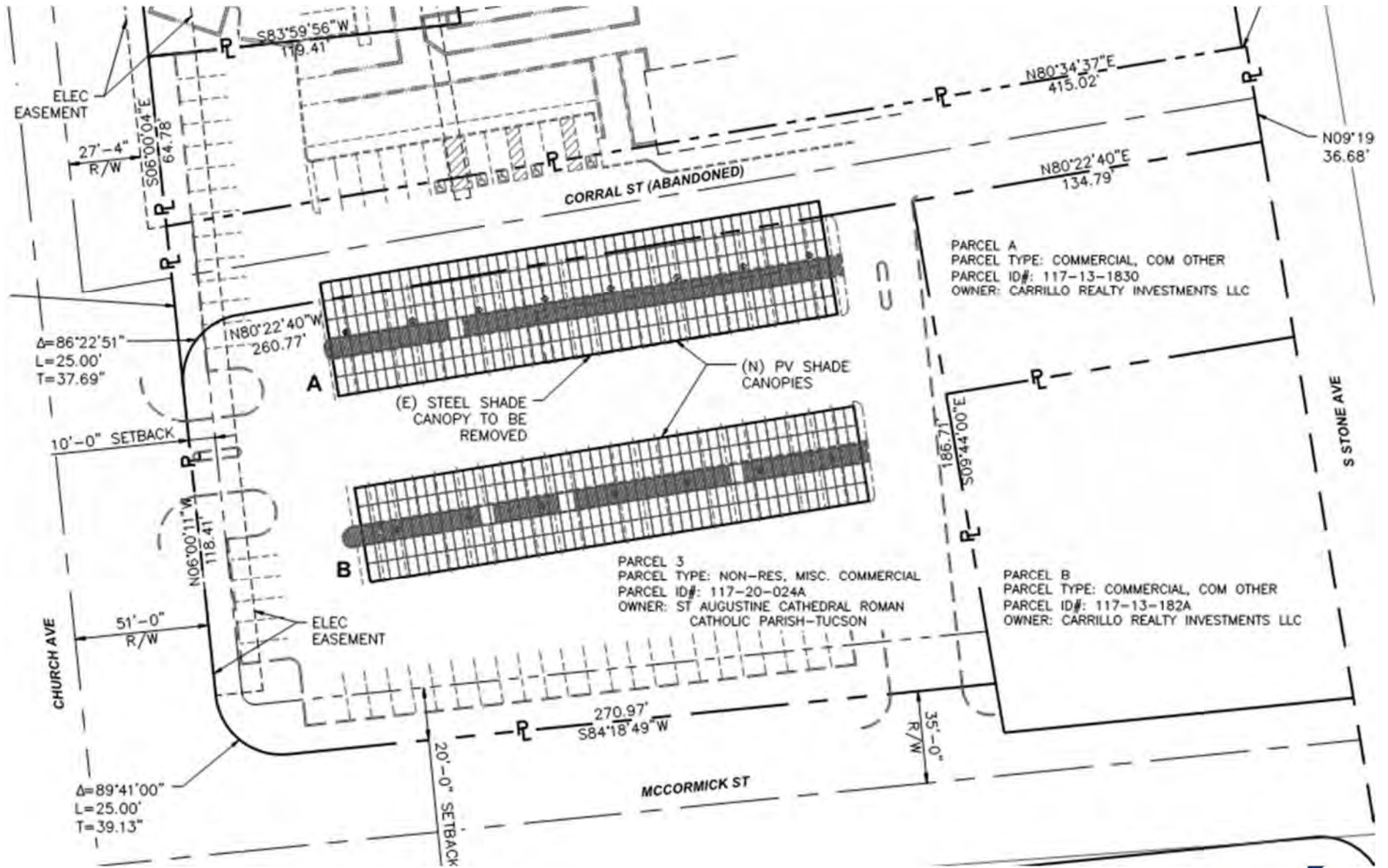
Compliance With RNA Standards

- Building Height
 - *Canopies lower than adjacent buildings in Development Zone*
 - *Provides transition to taller adjacent structures onsite*
- Setbacks
 - *All required parcel and perimeter yard setbacks to be maintained*
- Parking Spaces, Vehicle Circulation
 - *No parking removed or added*
 - *All minimum PAAL dimensions and circulation patterns to be maintained*
- Parking Screening
 - *Canopies contribute to screening of parking area*
- Pedestrian Access
 - *No pedestrian access pathways will be encroached*
- Open Space
 - *Canopies open below to maintain site lines to Chapel*
- Shade
 - *Canopies inherently designed to increase site shading*
 - *Will provide shade to existing pedestrian access pathways from parking lot*

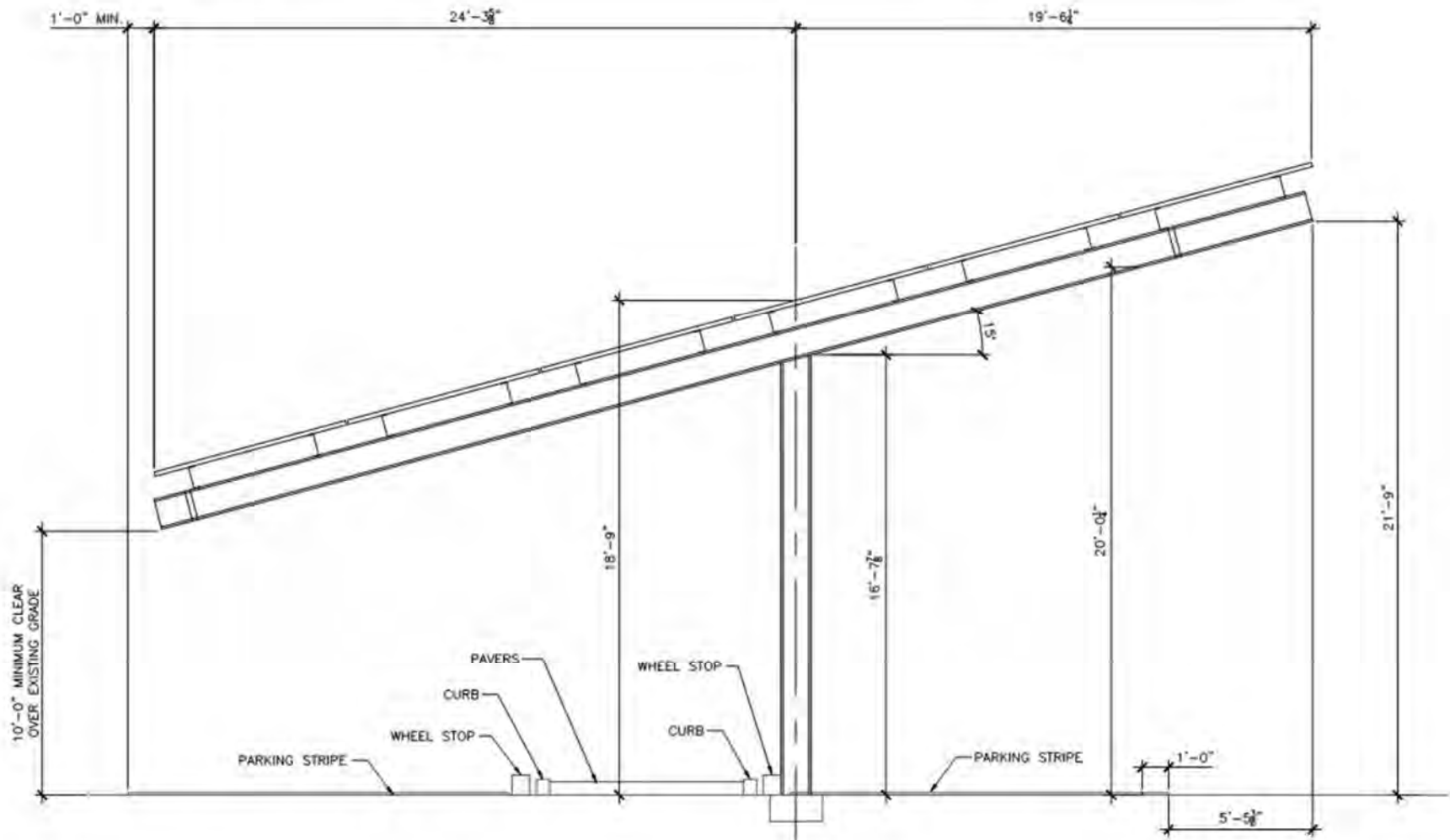
Existing Aerial



Canopy Locations

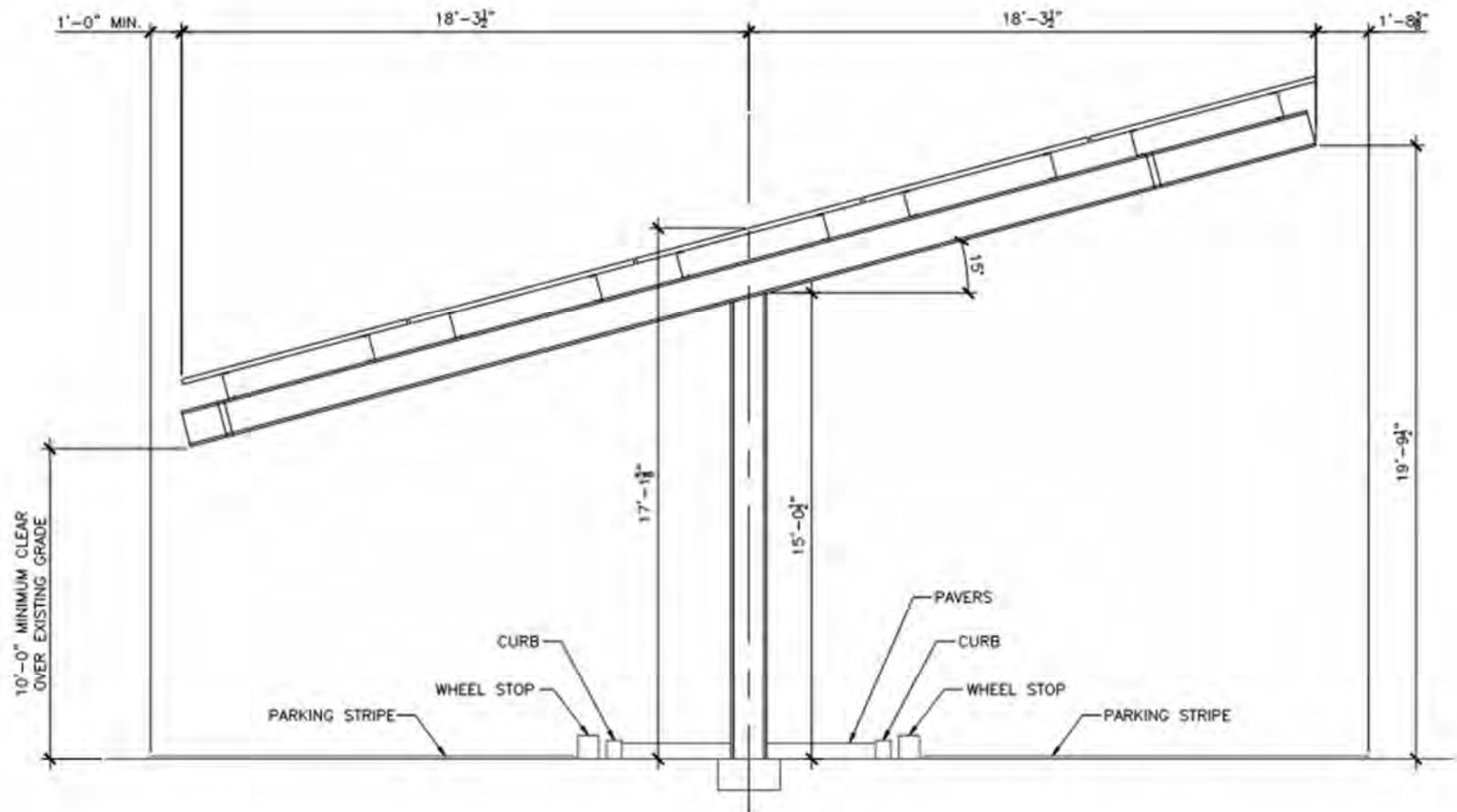


Canopy Specifications



1 SOLAR STRUCTURE FRAME ELEVATION, CANOPY A
SCALE: NOT TO SCALE

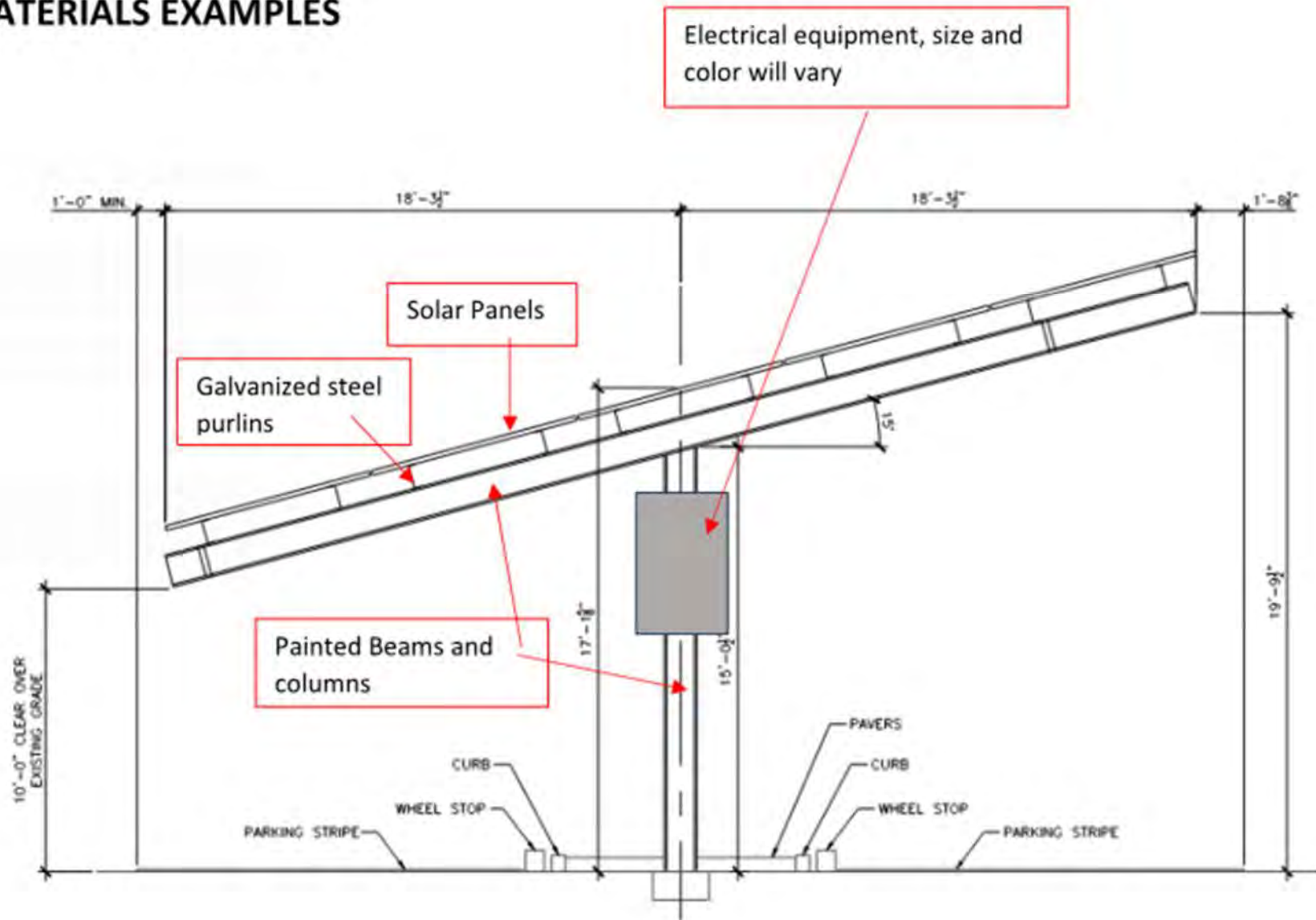
Canopy Specifications



2 SOLAR STRUCTURE FRAME ELEVATION, CANOPY B
SCALE: NOT TO SCALE

Canopy Appearance

MATERIALS EXAMPLES



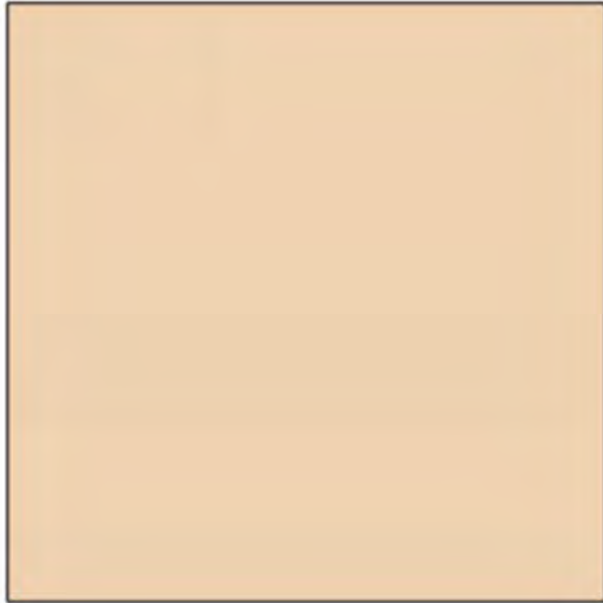
Canopy Appearance

MATERIALS EXAMPLES



Showing column and beams painted. Purlins will remain original metal finish.
Modules are blue/black glass with grey anodized aluminum frame.

Canopy Appearance



Paint for Columns and beams to be Sherwin Williams – Crescent Cream – SW 7721

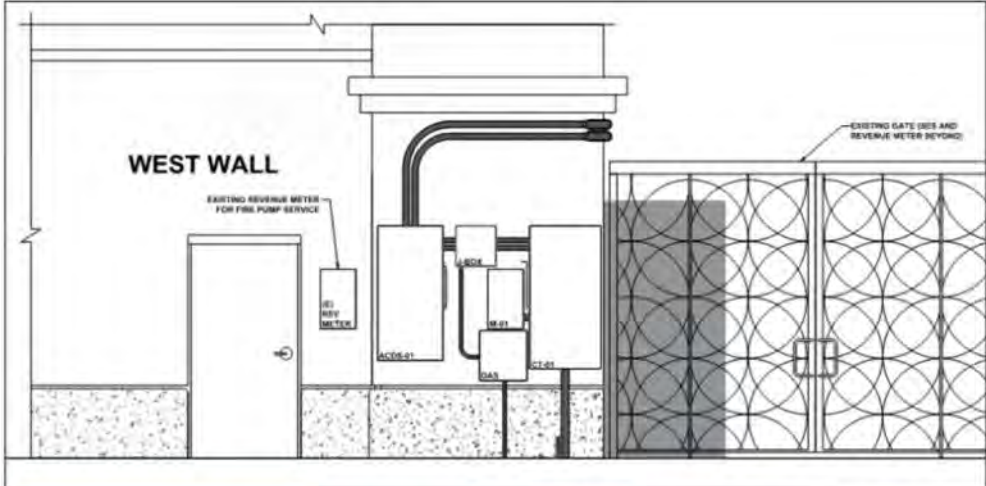
Canopy Appearance - Example



Canopy Appearance – Req'd Equipment



Required Equipment at Building



Current View of Site



View in parking lot looking at the Tucson Convention Center.



View on Church Ave. looking to the back of the parking lot. The wall at the back is associated with Carrillos Mortuary. The buildings to the left are Part of The St. Augustine Campus. To the right across Mc Cormick Street is the Museum.

Current View of Site



Surrounding Properties



248 S Church Ave. – Parking for Convention Center. The garage for the convention center is the structure closest to the project. It is simple and clean lines which will blend with the contemporary shade structures.



248 S Church Ave. – Convention Center Entrance. Set back from the road, but what is seen is a color palate that blends with proposed color choice for projects shade structures.

Surrounding Properties

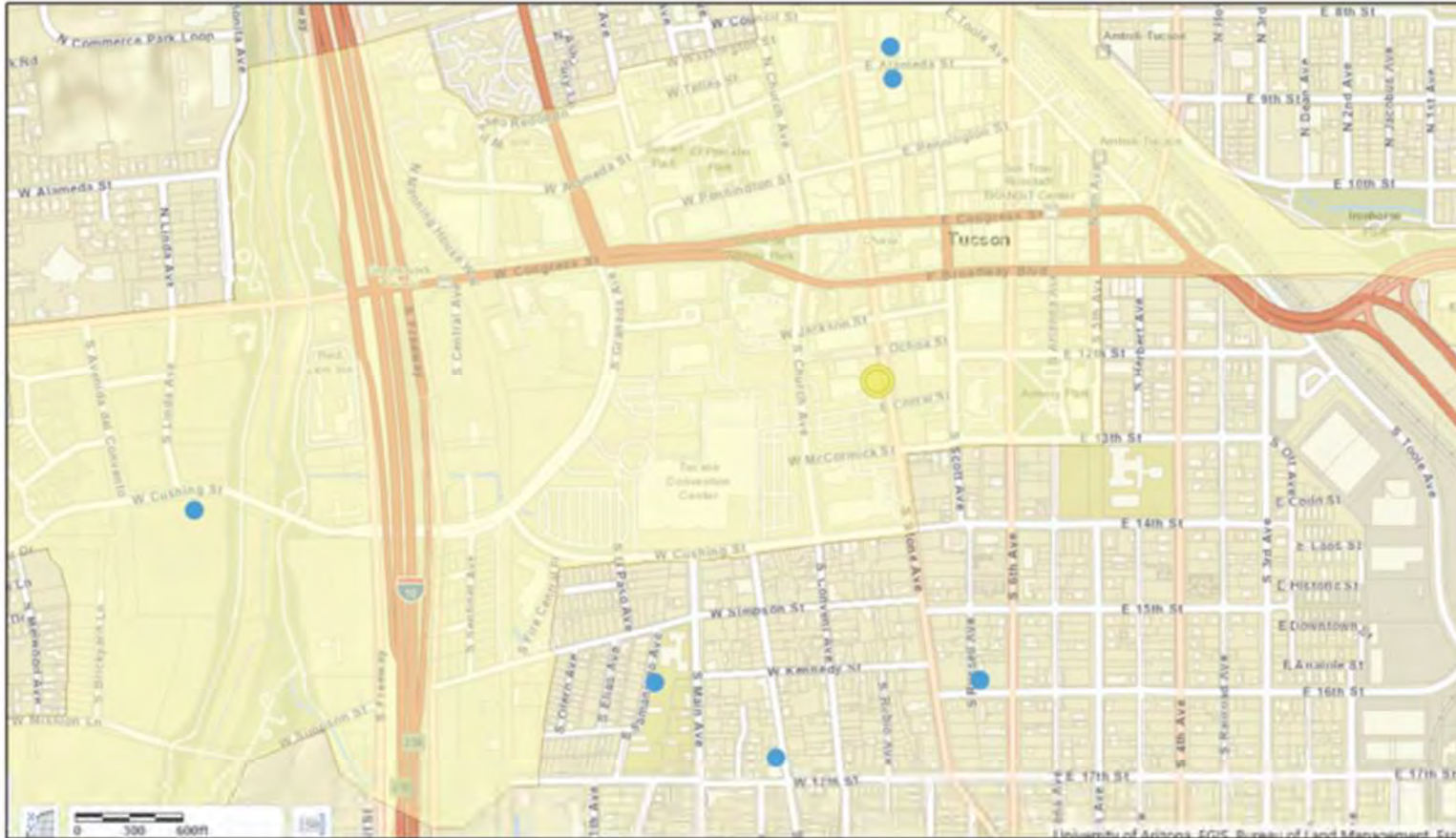


27 West Mc Cormick St- Carrillos Mortuary side entrance. Project will be set back from this adjacent property, but the choice of paint color is similar in tone to this existing business.



49 E Mc Cormick St - Museum of Contemporary Art. The contemporary windows mirror a similar look to solar modules. The paint color is in the same range as the projects proposed color.

Examples in District



Rio Nuevo District Examples-

875 West Cushing Street

35 East Alameda Street

38 East Alameda Street

Historic District Examples-

600 South Meyer Ave.

545 South Russell Ave.

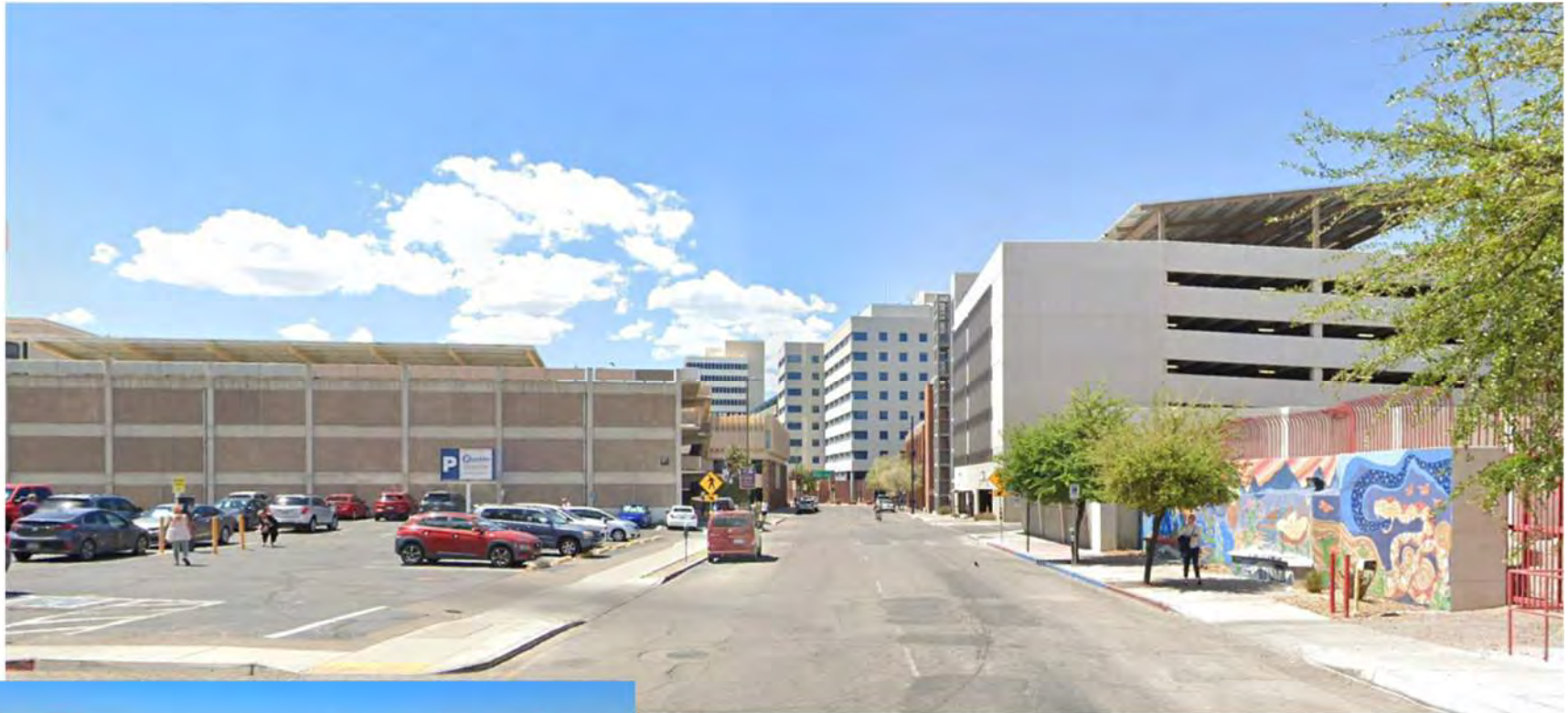
440 South Main Ave.

Examples in District – Caterpillar Building



- Similarities
 - Painted columns / beams
 - Galvanized steel purlins for module support
 - Electrical equipment mounted to posts

Examples in District – 35 & 38 E. Alameda



- Similarities
 - Painted columns / beams
 - Galvanized steel purlins for module support
 - Electrical equipment mounted to posts
- NOTE: 35 E Alameda Project Previously Approved by RNA Design Review Board, DRB-21-15

Examples Adjacent to RNA District



440 S Main Ave- Carrillo High School. Shade structures are visible from South Samaniego Ave. Columns and beams painted in similar tone to proposed project. Showing some equipment mounted to certain columns.



Examples Adjacent to RNA District



600 S Meyer Ave. - Commercial Shade structures showing similar paint to proposed color on this project.



Questions?

Cary Broschat

SOLON Corporation

Mobile: 520-409-7143

Email: cary.broschat@solonamerica.com