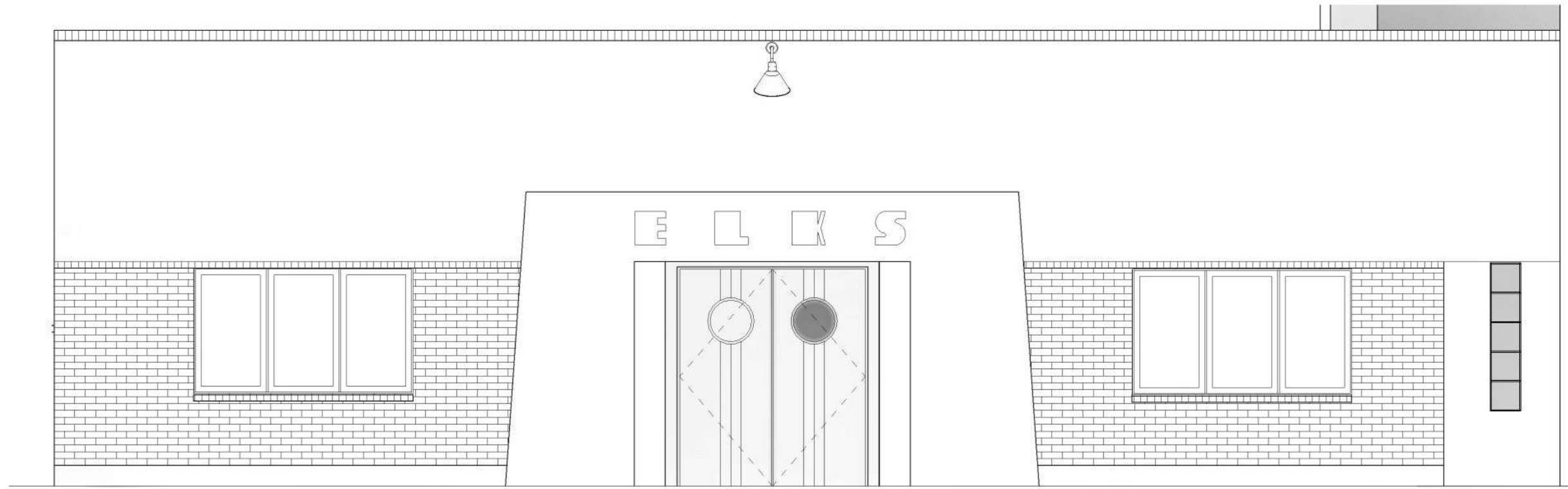


1 EAST MEYER ELEVATION  
SCALE: 1/8" = 1'-0"

TEATRO CARMEN  
REHABILITATION OF HISTORIC THEATER  
HPZ 1.1

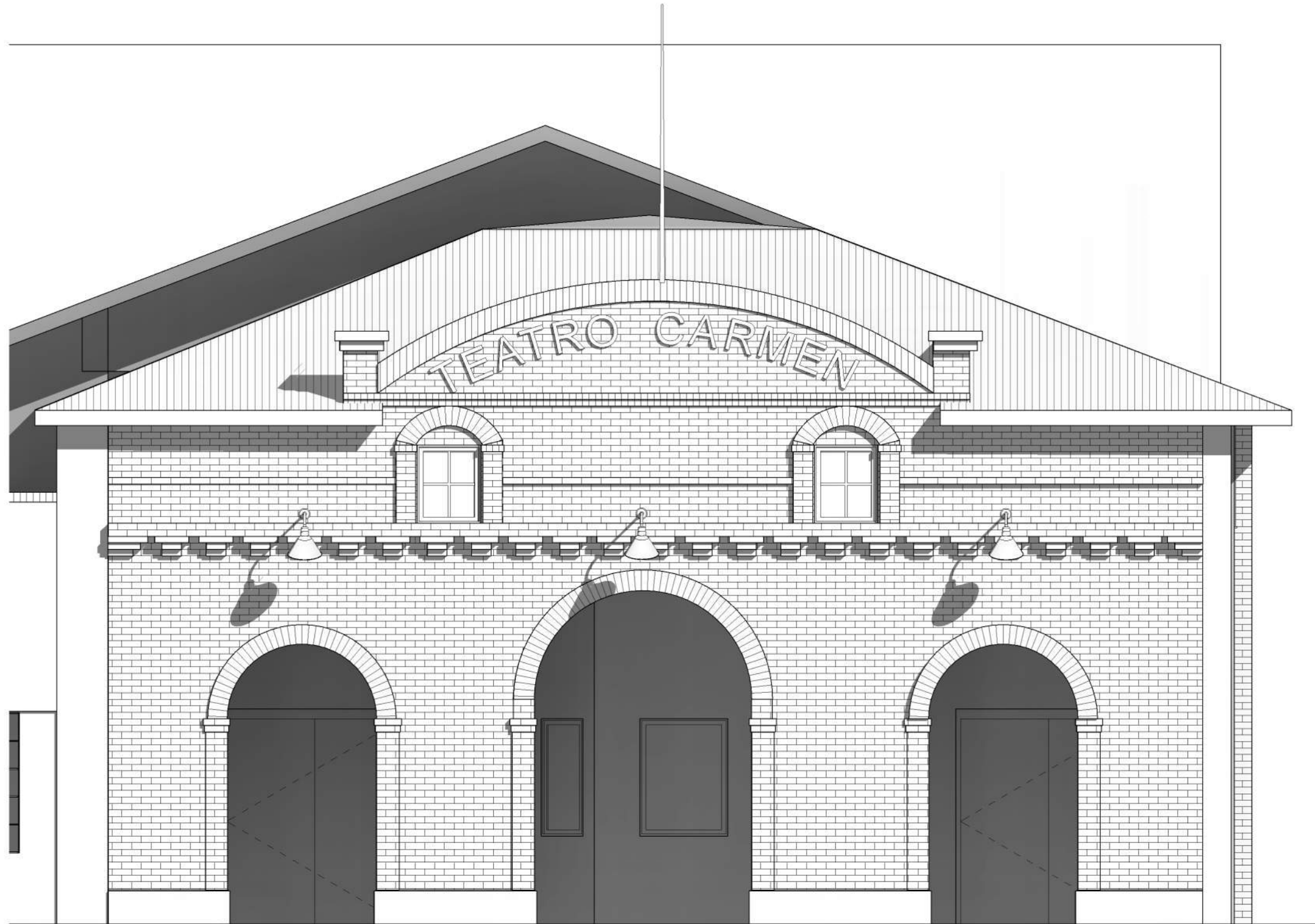
POSTER  
MIRTO  
McDONALD  
ARCHITECTURE  
PLANNING  
PRESERVATION  
**PMM**  
317 N. COURT AVE. TUCSON, AZ 85701  
PH 520.882.6310 | WWW.PMM.DESIGN



**1 ELKS FACADE**  
SCALE: 1/4" = 1'-0"

- DE 'accession of film set mural. Coordinated with Arts Foundation for Tucson and Southern Arizona.
- Remove existing glass block, restore to 3 pane wood casement windows, per historic drawings
- New front doors to match historic drawings
- Install new light at historic location

**TEATRO CARMEN**  
REHABILITATION OF HISTORIC THEATER  
HPZ 1.2



- Carefully remove plaster from existing façade. Clean brick and re-point historic colored mortar
- Rehabilitate or replace wood windows to match existing
- Reconstruct front facade arches to original proportions.
- Install new lights at historic locations

1 **TEATRO CARMEN FACADE**  
SCALE: 1/4" = 1'-0"

**TEATRO CARMEN**  
REHABILITATION OF HISTORIC THEATER  
HPZ 1.3

**PMM** POSTER MIRTO McDONALD  
ARCHITECTURE  
PLANNING  
PRESERVATION  
317 N. COURT AVE. TUCSON, AZ 85701  
PH 520.882.6310 | WWW.PMM.DESIGN



ARIZONA HISTORICLOGACAL SOCITY - TUCSON, AZ - 1916 EST.

# TEATRO CARMEN

REHABILITATION OF HISTORIC THEATER  
HPZ 1.4

**PMM**  
POSTER  
MIRTO  
McDONALD  
ARCHITECTURE  
PLANNING  
PRESERVATION  
317 N. COURT AVE. TUCSON, AZ 85701  
PH 520.882.6310 | WWW.PMM.DESIGN



UNIVERSITY OF ARIZONA ARCHIVE - I.B.P.O.E.W. TUCSON, AZ

# TEATRO CARMEN

REHABILITATION OF HISTORIC THEATER  
HPZ 1.5

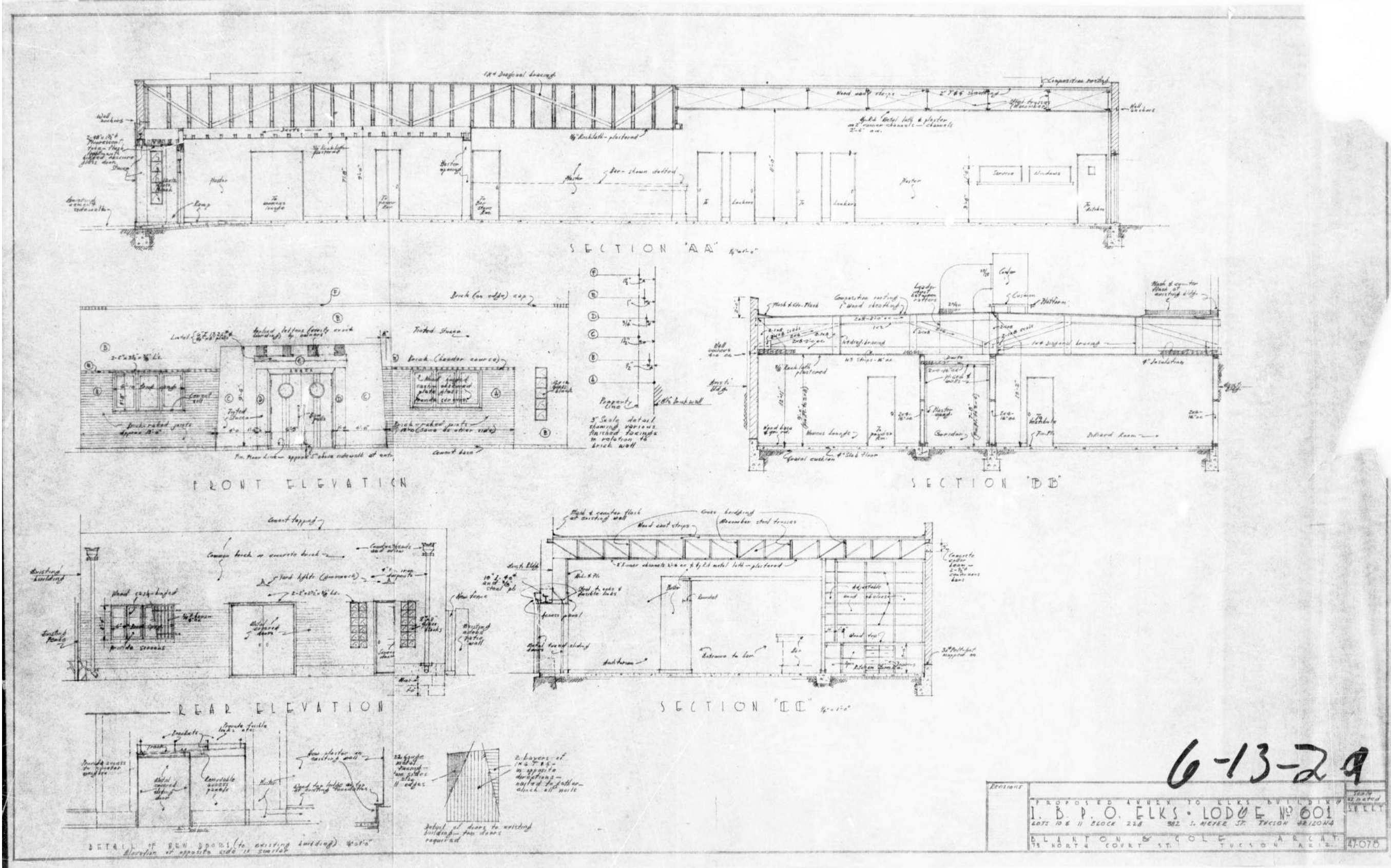
**PMM** POSTER  
MIRTO  
McDONALD  
ARCHITECTURE  
PLANNING  
PRESERVATION  
317 N. COURT AVE. TUCSON, AZ 85701  
PH 520.882.6310 | WWW.PMM.DESIGN



ARIZONA STATE HISTORIC PROPERTY INVENTORY - JULY, 1977

TEATRO CARMEN  
REHABILITATION OF HISTORIC THEATER  
HPZ 1.6

POSTER  
MIRTO  
McDONALD  
ARCHITECTURE  
PLANNING  
PRESERVATION  
**PMM**  
317 N. COURT AVE. TUCSON, AZ 85701  
PH 520.882.6310 | WWW.PMM.DESIGN



ORIGINAL DRAWINGS I.B.P.O ELKS LODGE - CITY OF TUCSON PSD ARCHIVE

TEATRO CARMEN  
REHABILITATION OF HISTORIC THEATER  
HPZ 1.7

POSTER  
MIRTO  
McDONALD  
ARCHITECTURE  
PLANNING  
PRESERVATION  
PMM  
317 N. COURT AVE. TUCSON, AZ 85701  
PH 520.882.6310 | WWW.PMM.DESIGN



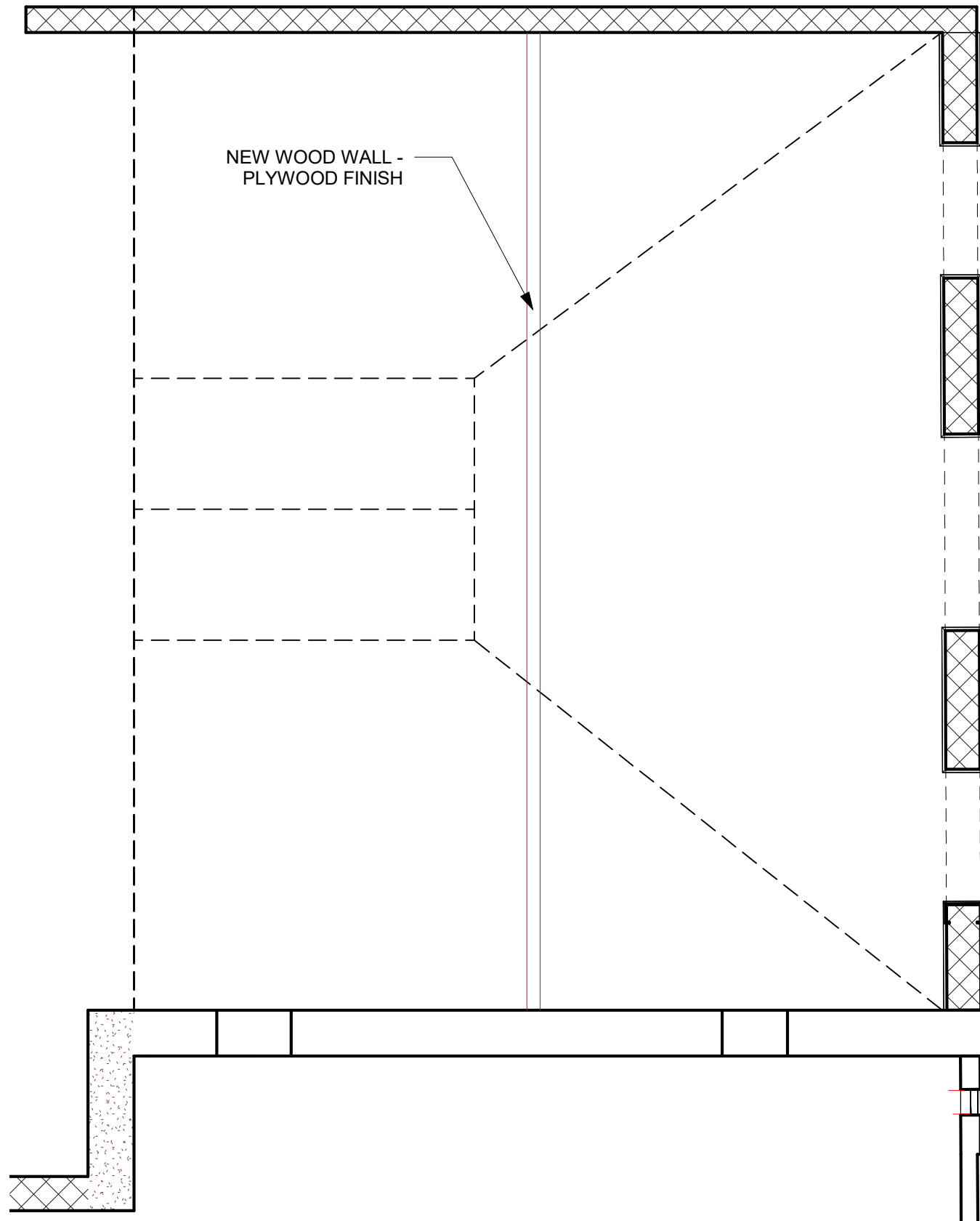
BOYS ON OUR SIDE - 1995

# TEATRO CARMEN

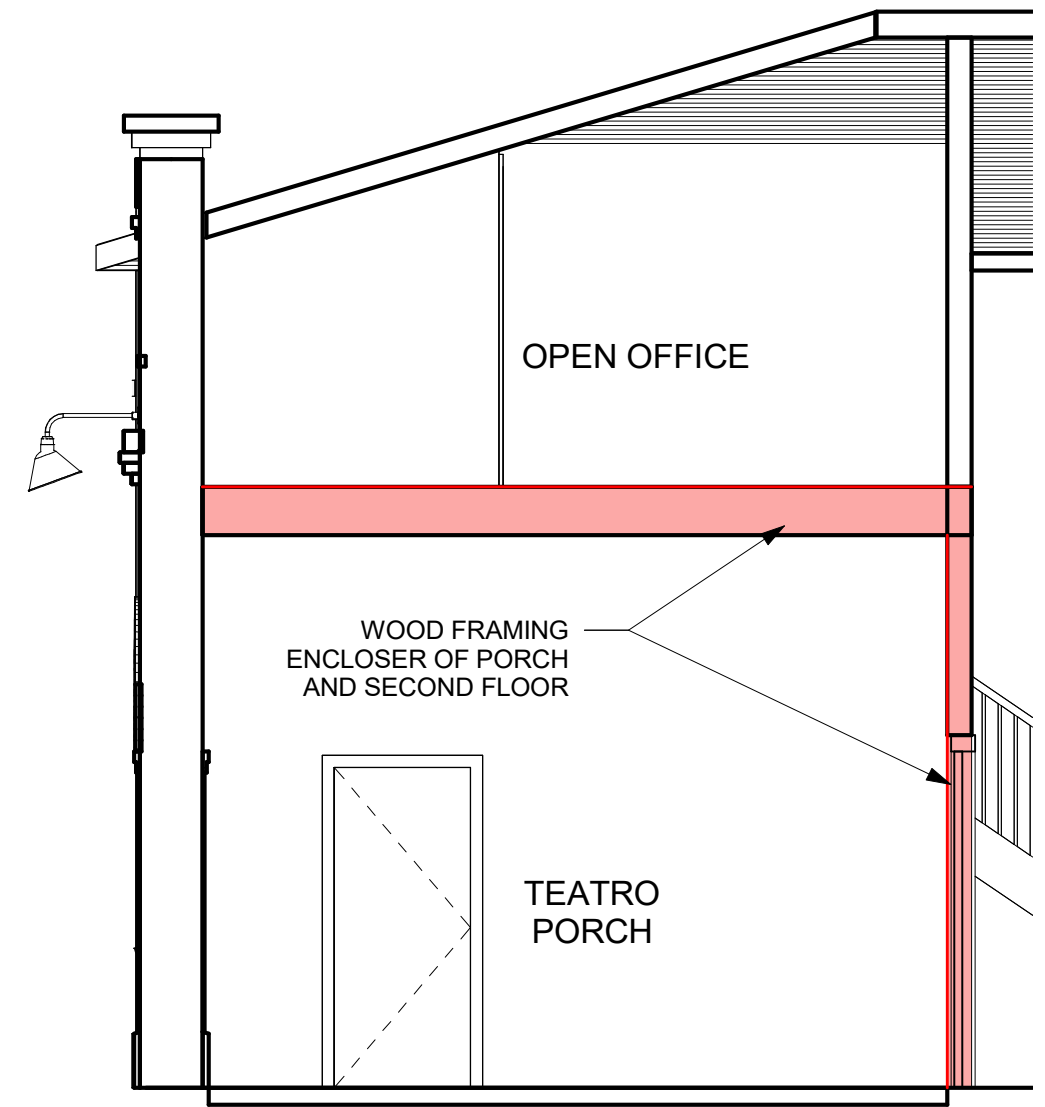
REHABILITATION OF HISTORIC THEATER  
HPZ 1.8

**PMM** POSTER  
MIRTO  
McDONALD  
ARCHITECTURE  
PLANNING  
PRESERVATION  
317 N. COURT AVE. TUCSON, AZ 85701  
PH 520.882.6310 | WWW.PMM.DESIGN





**1** LEVEL 1 FACADE PHASE  
SCALE: 3/16" = 1'-0"



**2** FACADE PHASE PORCH FRAMINGS  
SCALE: 1/4" = 1'-0"

**TEATRO CARMEN**  
REHABILITATION OF HISTORIC THEATER  
HPZ 1.9

**PMM** POSTER MIRTO McDONALD  
ARCHITECTURE PLANNING PRESERVATION  
317 N. COURT AVE. TUCSON, AZ 85701  
PH 520.882.6310 | WWW.PMM.DESIGN



HISTORIC INTEGRAL COLORED MORTAR



HISTORIC INTEGRAL COLORED MORTAR

TEATRO CARMEN  
REHABILITATION OF HISTORIC THEATER  
HPZ 1.10