



REF: TC-RES-1023-08449
SD-0324-00027
835 and 837 N 1st Avenue

DESIGN GUIDELINE REQUEST FOR VARIANCE OF WINDOW INSTALLATION

The applicant recognizes that the West University Design Guidelines call for wood windows and no vinyl and understands that alternative window materials are evaluated on a case-by-case basis only and within the development zone.

The examples included in this submittal show both vinyl and aluminum windows within the development zone. The applicant will finish the vinyl windows in a dark brown paint so that the finish from the street and the adjacent properties appear the same as the previously installed steel casement windows.

The steel casement windows have been replaced with windows of be similar style, rhythm, and color as the original windows however vinyl frames have been installed.

Vinyl windows are consistent for this development zone

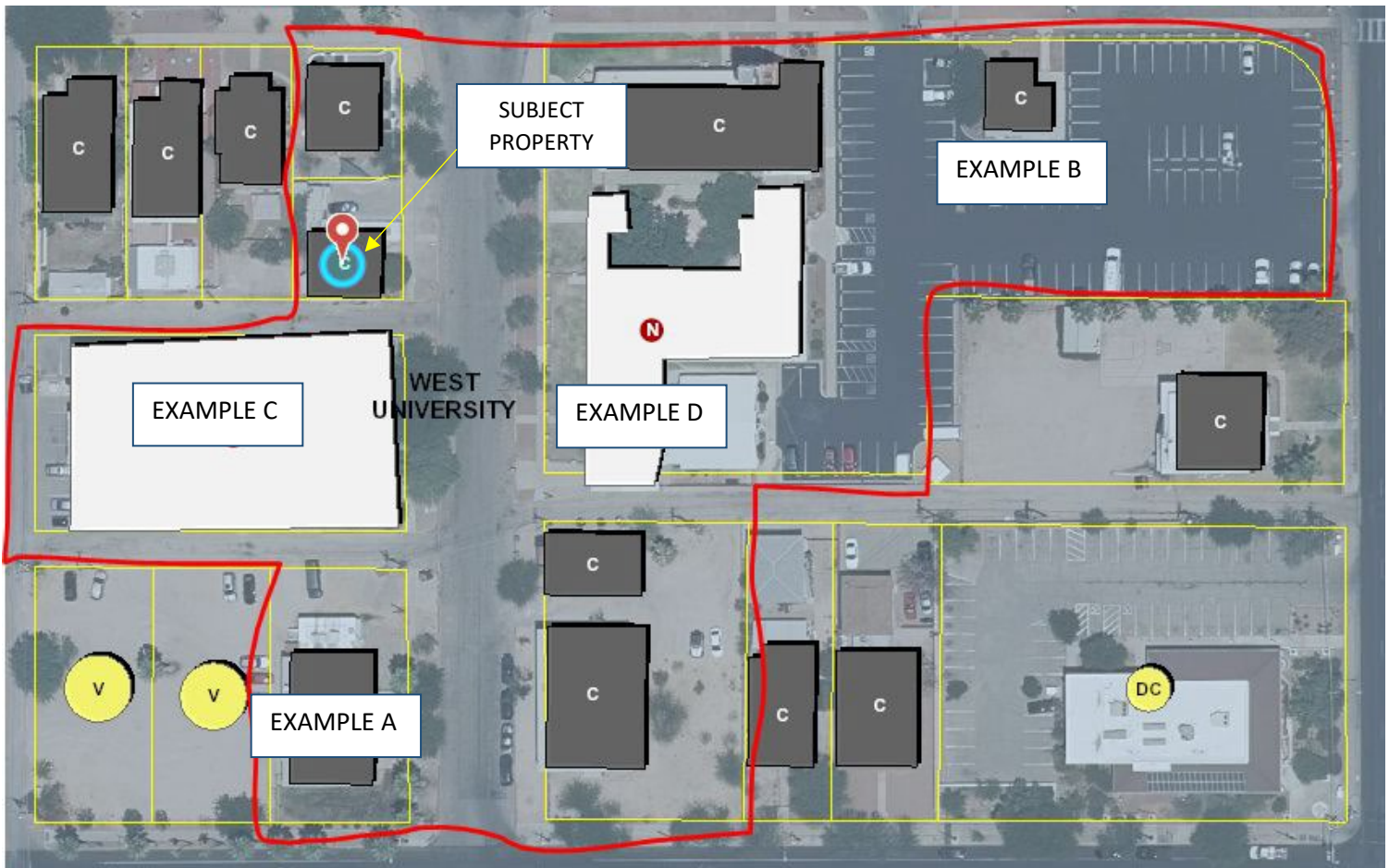


SUBJECT PROPERTY



REF: TC-RES-1023-08449
SD-0324-00027
835 and 837 N 1st Avenue

EXAMPLES WITHIN DEVELOPMENT ZONE – ALUMINUM AND VINYL WINDOWS



DEVELOPMENT ZONE

EXAMPLE A – MULTIPLE WINDOWS ALONG 1st AVENUE AT THIS BUILDING ARE VINYL

EXAMPLE B – ALL WINDOWS WITHIN THIS BUILDING ARE MADE OF EITHER VINYL OR ALUMINUM

EXAMPLE C – ALL WINDOWS INSTALLED AT THIS BUILDING ARE ALUMINUM

EXAMPLE D – MULTIPLE WINDOWS WITHIN THIS BUILDING ARE MADE OF ALUMINUM



REF: TC-RES-1023-08449
SD-0324-00027
835 and 837 N 1st Avenue

EXAMPLE A – MULTIPLE WINDOWS ALONG 1st AVENUE AT THIS BUILDING ARE VINYL





REF: TC-RES-1023-08449
SD-0324-00027
835 and 837 N 1st Avenue

EXAMPLE B – ALL WINDOWS WITHIN THIS BUILDING ARE MADE OF EITHER VINYL OR ALUMINUM





REF: TC-RES-1023-08449
SD-0324-00027
835 and 837 N 1st Avenue

EXAMPLE C – ALL WINDOWS INSTALLED AT THIS BUILDING ARE ALUMINUM





REF: TC-RES-1023-08449
SD-0324-00027
835 and 837 N 1st Avenue

EXAMPLE D – MULTIPLE WINDOWS WITHIN THIS BUILDING ARE MADE OF ALUMINUM

