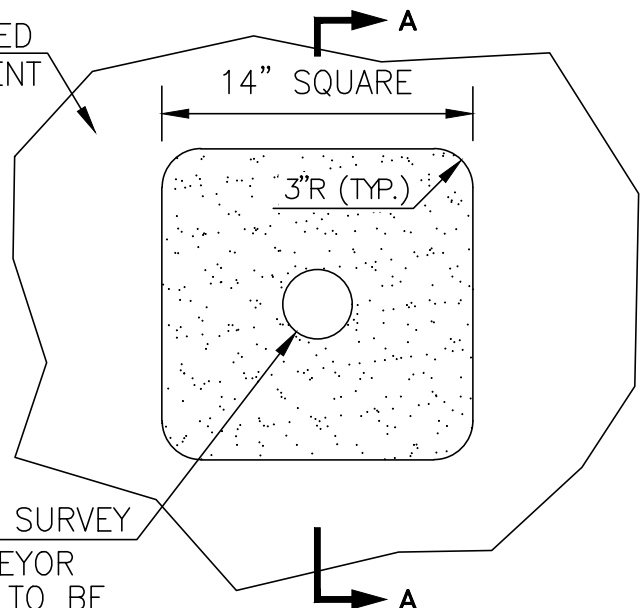


PLAN VIEW
PREFERRED OPTION

FINISHED
PAVEMENT



PLAN VIEW
ALTERNATE OPTION

TOP OF CONCRETE FINISHED
FLUSH WITH TOP OF ADJACENT
PAVEMENT.

2" DIA. BRASS SURVEY
MARKER (FLUSH W/ CONC.)

1/8" R (TYP.)

SECTION A-A

NTS

UTILITY CONCRETE
PER STD. SPEC. 922

2-#4 BARS
16" LONG

SURVEY GRADE
MAGNET LOCATION
(SEE NOTE 4)

18"

NOTES:

1. BRASS MARKER TO BE SET BY CONTRACTOR AND MARKED BY REGISTERED LAND SURVEYOR.
2. SURVEYOR IDENTIFICATION TO BE STAMPED ON MARKER FACE.
3. IN ROADWAY IMPROVEMENT PROJECTS, ORIGINAL NON-ALIQUOT MONUMENTS TO BE PRESERVED IN PLACE WHENEVER POSSIBLE.
4. A SURVEY GRADE MAGNET MAY BE USED IN PLACE OF THE 2-#4 BARS WHEN PLACED AT THE BASE OF THE BRASS MARKER AND WITH THE APPROVAL OF THE CITY SURVEYOR.
5. SURVEY MARKERS SHALL NOT BE BUILT ON OR COVERED.
6. IF SURVEY MARKERS ARE DAMAGED AND/OR DISTURBED DURING CONSTRUCTION, THE CONTRACTOR SHALL HAVE THE MARKER RESET BY A REGISTERED LAND SURVEYOR. ACCORDING TO STATE LAW (ARS 33-103).
7. THIS DETAIL SHALL NOT BE ALTERED, CHANGED, OR MODIFIED WITHOUT THE WRITTEN APPROVAL FROM THE CITY ENGINEER AND CITY SURVEYOR.

ISSUED:

11/24

REVISED:



STANDARD DETAIL

**CITY OF TUCSON
SURVEY MONUMENT**




DETAIL NO.



103

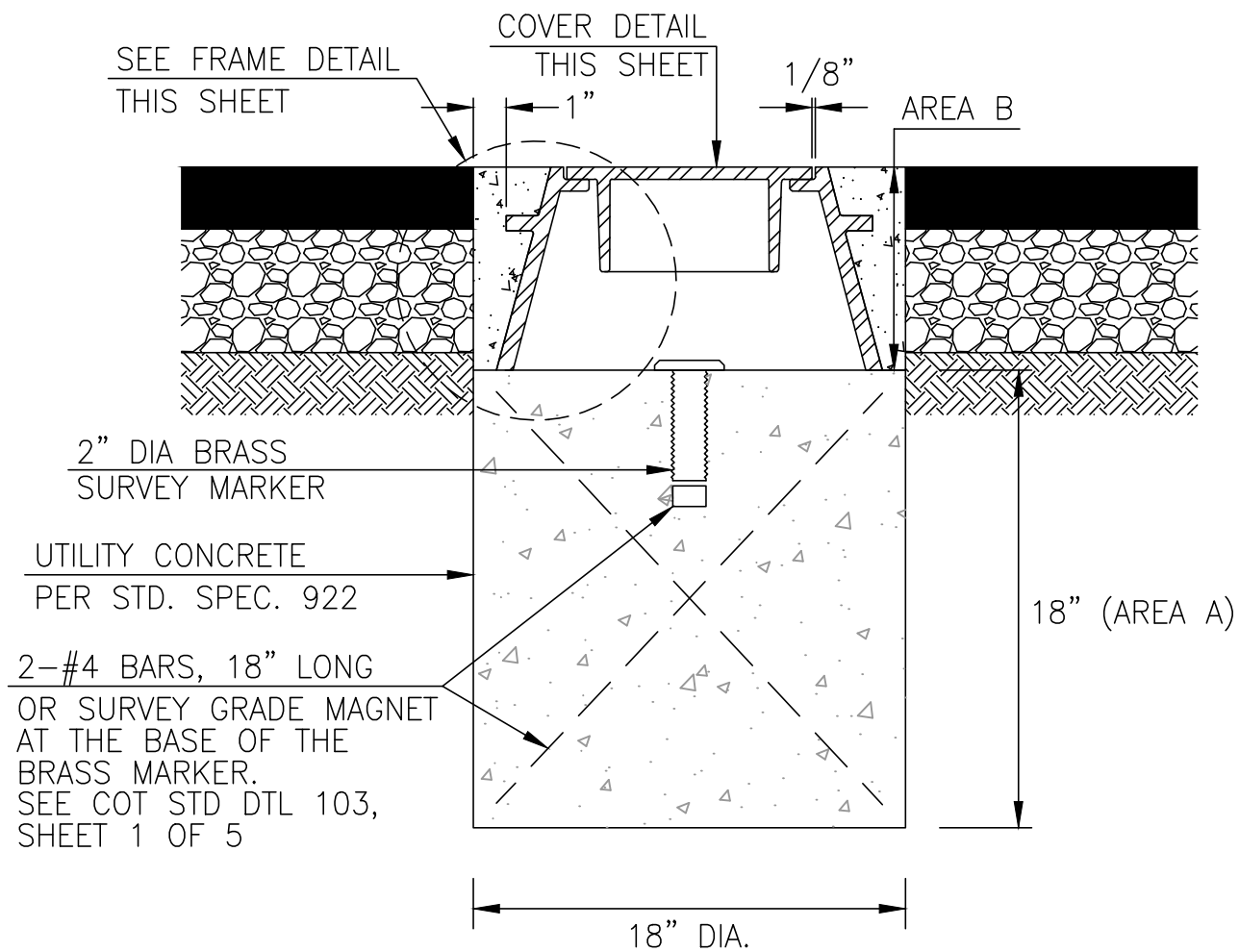
M-2024-004

SHEET 1 OF 5

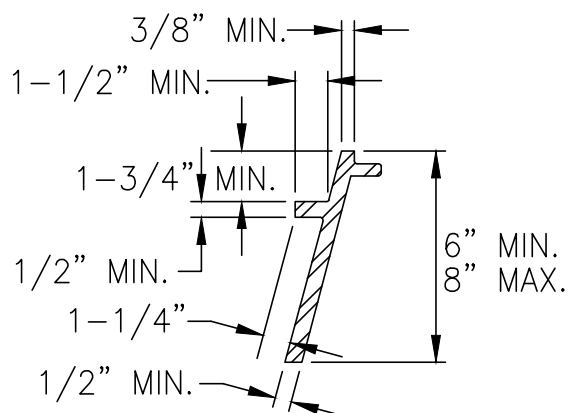
GENERAL NOTES FOR FRAME & COVER MONUMENTS

1. SURVEY MARKER, FRAME AND COVER, COMPLETE-IN-PLACE, SHALL BE CONSIDERED A SINGLE UNIT.
2. FRAME AND COVER SHALL BE FIRST CLASS GREY IRON, TOUGH AND EVEN GRAINED.
3. FRAME AND COVER TO BE TRAFFIC RATED.
4. FRAME TO BE SET ON CONCRETE AND LEFT FREE TO SLIDE.
5. BRASS MARKER TO BE SET BY CONTRACTOR AND MARKED BY REGISTERED LAND SURVEYOR.
6. SURVEYORS REGISTRATION NUMBER TO BE STAMPED ON BRASS CAP.
7. AREA "B" TO BE PLACED AFTER AREA "A" HAS ACHIEVED INITIAL SET.
8. PORTIONS OF THE FRAME TO BE MACHINE FINISHED ARE SHOWN BY:  THE ALLOWABLE TOLERANCE FOR MACHINED AREAS SHALL BE 1/64".
9. LETTERS ON COVER SHALL BE BLOCK 5/8" X 3/4" AND RAISED 1/16" AND 1/8" WIDE.
10. IN ROADWAY IMPROVEMENT PROJECTS, ORIGINAL NON-ALIQUOT MONUMENTS TO BE PRESERVED IN PLACE WHENEVER POSSIBLE.
11. SURVEY MARKERS SHALL NOT BE BUILT ON OR COVERED.
12. IF SURVEY MARKERS ARE DAMAGED AND/OR DISTURBED DURING CONSTRUCTION, THE CONTRACTOR SHALL HAVE THE MARKER RESET BY A REGISTERED LAND SURVEYOR ACCORDING TO STATE LAW (ARS 33-103).
13. THIS DETAIL SHALL NOT BE ALTERED, CHANGED, OR MODIFIED WITHOUT THE WRITTEN APPROVAL FROM THE CITY ENGINEER AND CITY SURVEYOR.

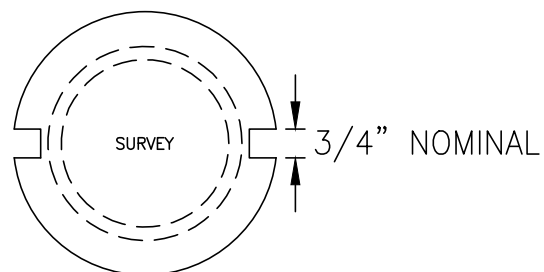
ISSUED:		STANDARD DETAIL		DETAIL NO.
11/24		CITY OF TUCSON SURVEY MONUMENT (FRAME AND COVER)		103
REVISED:				M-2024-004
				SHEET 2 OF 5



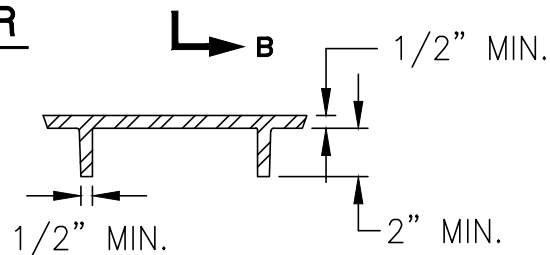
FRAME AND MONUMENT
NTS



FRAME





COVER

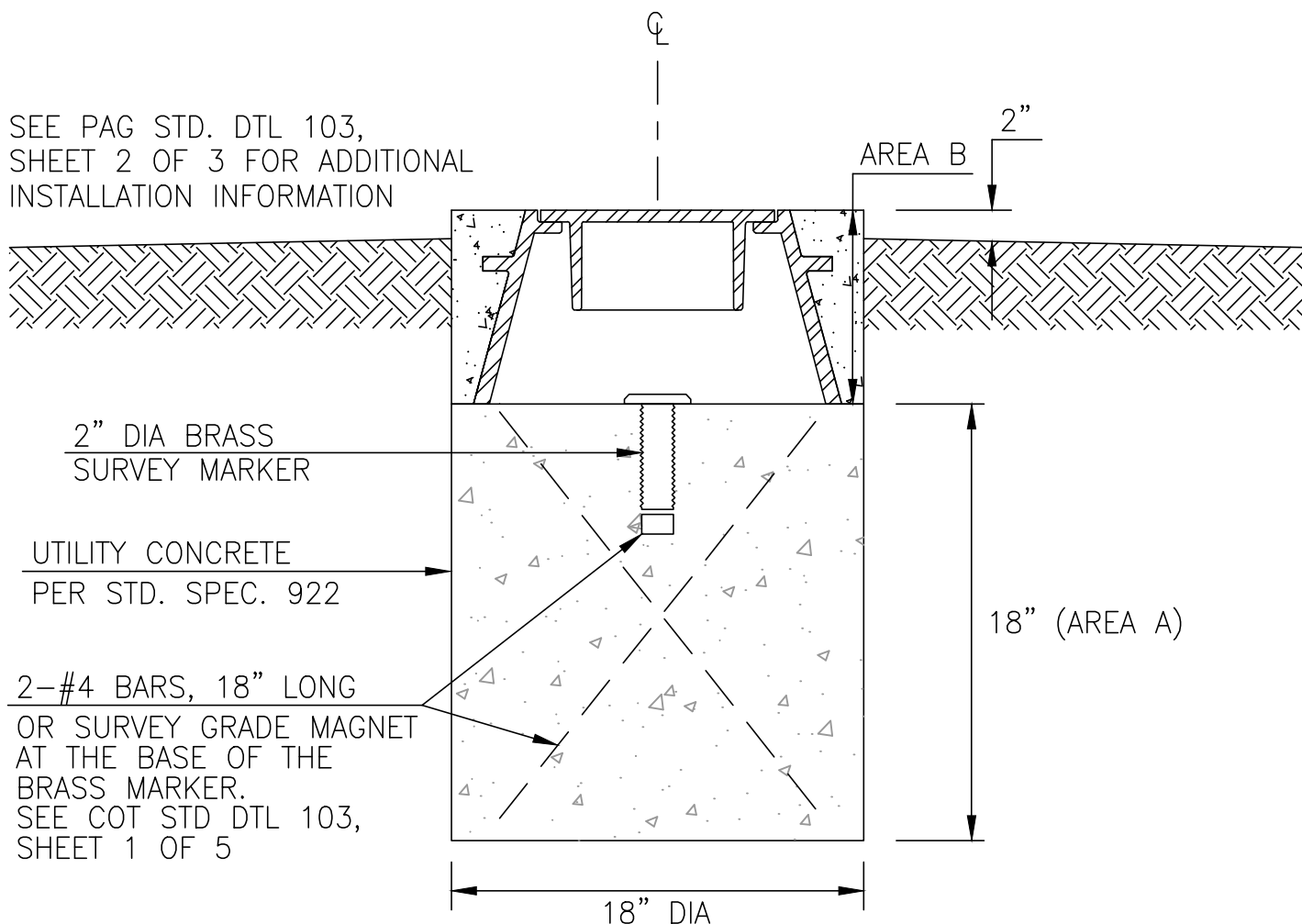


SECTION B-B

SEE FRAME & COVER NOTES ON SHEET 2

ISSUED:		STANDARD DETAIL		DETAIL NO.
11/24		CITY OF TUCSON		103
REVISED:		SURVEY MONUMENT (FRAME AND COVER)		M-2024-004
				SHEET 3 OF 5

SEE PAG STD. DTL 103,
SHEET 2 OF 3 FOR ADDITIONAL
INSTALLATION INFORMATION





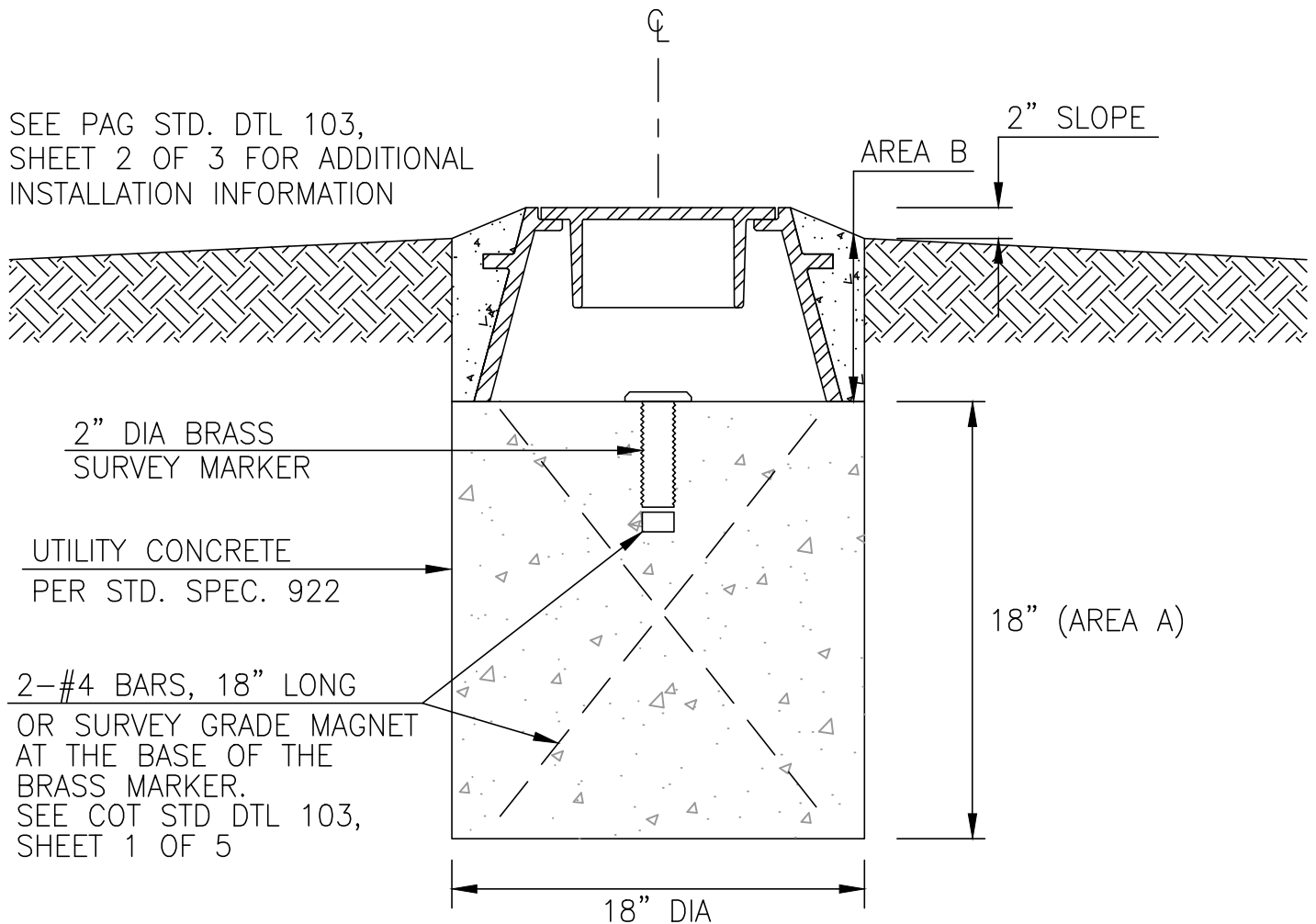
RAISED CASTING DETAIL

NTS

NOTE: FOR USE WITHIN TRAFFIC CIRCLES

SEE FRAME & COVER NOTES ON SHEET 2

ISSUED:		STANDARD DETAIL		DETAIL NO.
11/24		CITY OF TUCSON		103
REVISED:		SURVEY MONUMENT		M-2024-004
		(FRAME AND COVER)		SHEET 4 OF 5





RAISED CASTING DETAIL

NTS

NOTE: FOR USE IN UNPAVED AREAS
(CITY SURVEYOR APPROVAL REQUIRED)

SEE FRAME & COVER NOTES ON SHEET 2

ISSUED:		STANDARD DETAIL		DETAIL NO.
11/24		CITY OF TUCSON		103
REVISED:		SURVEY MONUMENT		M-2024-004
		(FRAME AND COVER)		SHEET 5 OF 5