



# Tucson Home Water Works Calculator:

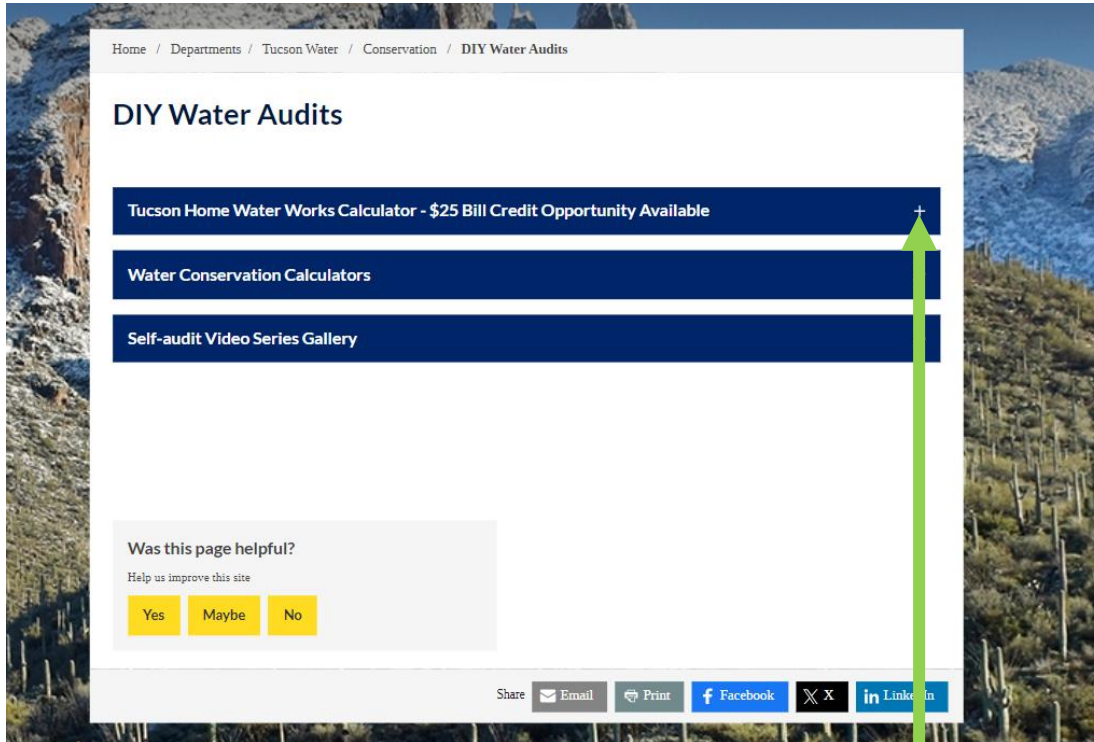
*Accessing my report and filling out the bill credit form*

# Table of contents:

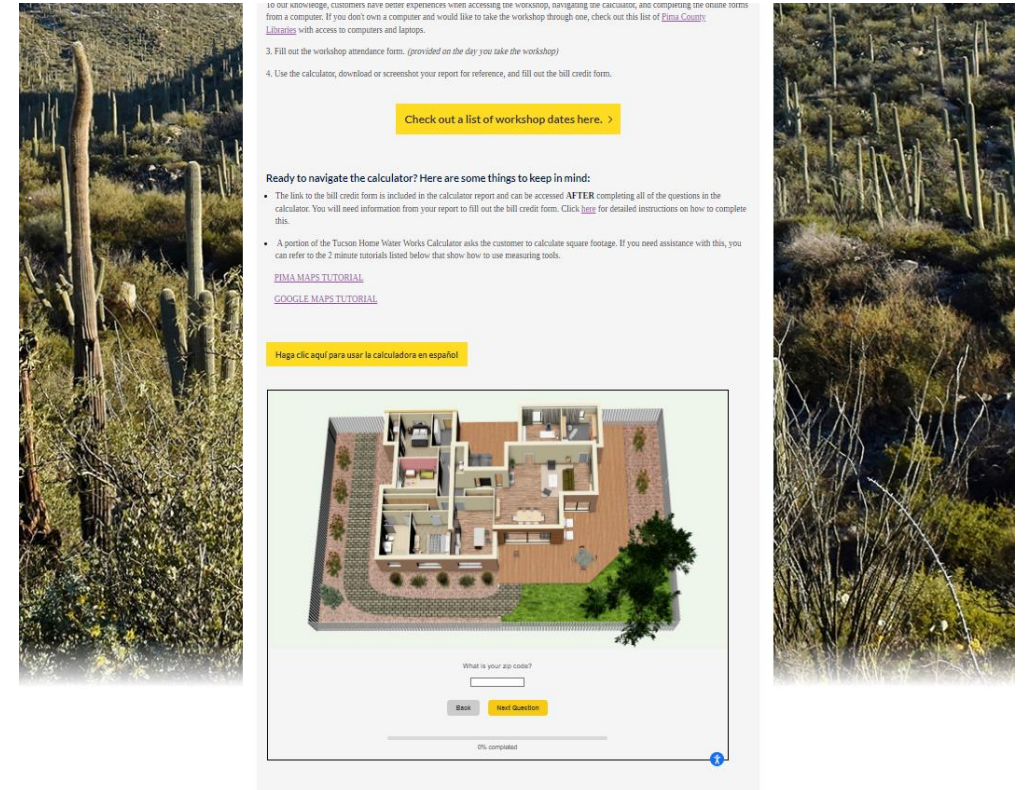
- Slide 3 – How to access the calculator
- Slide 4 – Filling out the initial questions
- Slide 5 – Measuring square footage
- Slide 6 – Navigating the calculator
- Slide 7 – Water saving facts & tips in the calculator
- Slide 8 – Calculating outdoor percentage (outdoor question)
- Slide 9 – Accessing your calculator report
- Slide 10 – Accessing the bill credit form
- Slide 11 & 12 – Filling out the bill credit form

You **MUST** take the workshop to receive bill credit. It's best if you complete the calculator& bill credit form after attending the workshop so our staff can quickly verify your attendance.

# Accessing the calculator



- Visit: [tucsonaz.gov/water/diy-audit](https://tucsonaz.gov/water/diy-audit)
- Click on the top tab labeled “Tucson Home Water Works Calculator - \$25 Bill Credit Opportunity Available”



- Tab will expand. Keep scrolling until you see the calculator





What is your zip code?

Back

Next Question


0% completed

**Fill out the initial questions. You will be asked:**

- Your zip code
- Construction date of home
- # of people living full time in your home
- If you use water outdoors
  - If yes, estimate size of irrigated landscape
- Square footage of your home



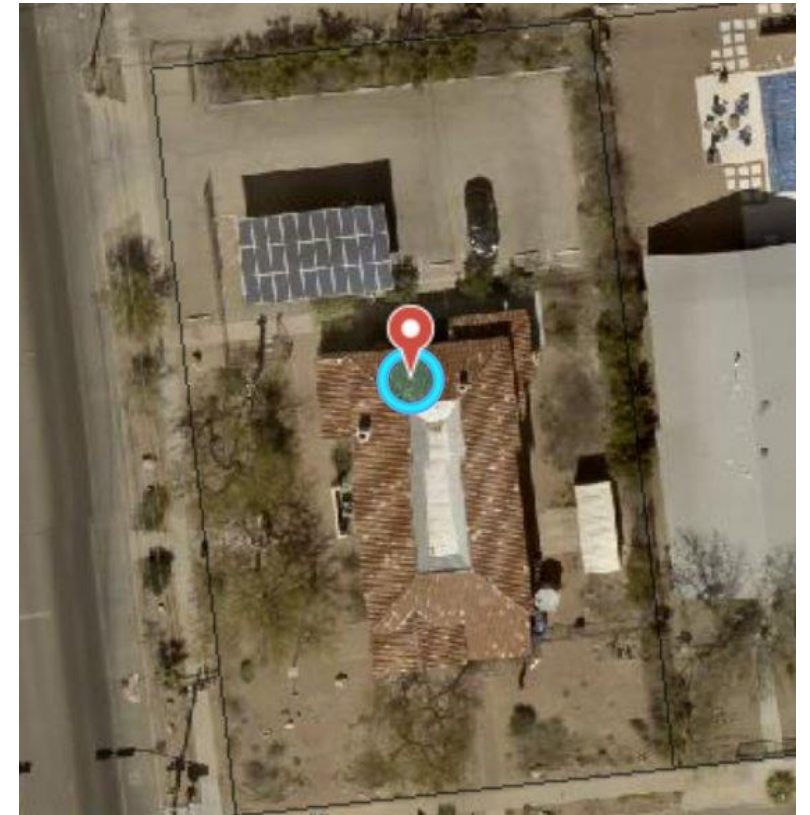




Please estimate the size of your irrigated landscape (irrigated landscape is the part of your yard that you water with a hose or sprinkler).

☐ very small (less than 1,000 sq ft)  
☐ small (1,000-3,000 sq ft)  
☐ average (3,000-7,000 sq ft)  
☐ large (7,000-15,000 sq ft)  
☐ very large (more than 15,000 sq ft)  
☐ other (specify in next question)

[Back](#) [Next Question](#)




For the section asking you to estimate the size of your irrigated landscape, make your best guess! We have tools available to help!



- [Pima Maps Measuring Tool Tutorial](#)
- [Google Maps Measuring Tool Tutorial](#)

Calculator will walk you through rooms where water is being used.

- Asks behavior questions
- Fixture type/age questions
- Will walk you through:
  - Bathroom
  - Kitchen
  - Laundry room
  - Ask about evaporative cooler
  - Ask about water softener
  - Outdoors



**Bathroom**

I turn off the faucet while brushing my teeth or doing other tasks.

☒ yes ☐ no

[Back](#) [Next Question](#)

20% completed

## Water Saving Tips

### Faucets

Fact: Leaky faucets and leaving the faucet running (even by mistake) can waste thousands of gallons of water.

Tip: Fix all leaks promptly and shut off the faucet when it is not in use. Learn more about leak repair [here](#).

Tip: [WaterSense-labeled faucets and aerators](#) are widely available and can reduce the amount of water used in the sink by 30 percent or more. Water utilities frequently offer giveaways and rebates on these products, so check with your water provider to see what's available. Tucson Water offers their customers FREE water conservation materials that include aerators. Order your conservation kit [here](#).

Tip: [WaterSense labeled faucets and aerators](#) are widely available and can reduce the amount of water used in the sink by 30 percent or more. Water utilities frequently offer giveaways and rebates on these products, so check with your water provider to see what's available.

### Shower

Fact: A typical showerhead flows at 2.5 gallons per minute or less. The average shower in the United States consumes 17 gallons and lasts just over 8 minutes. [Click here to learn more](#).

Tip: If you're looking to buy a new showerhead or replace yours due to wear out, consider buying a [WaterSense-labeled showerhead](#). These only use 2 gallons per minute or less!

Tucson Water offers their customers FREE water conservation materials that includes WaterSense-labeled showerhead. Order your conservation kit [here](#).

### Toilets

Fact: New WaterSense-labeled toilets use 1.28 gallons or less per flush and are designed to remove waste more efficiently. If your toilet was manufactured before 1995, consider an upgrade to a new WaterSense-labeled fixture; it could save you up to 10,000 gallons per year!

Tip: Leaking or running toilets in a single-family home can waste as much as 500 gallons of water per day! Learn about quick and easy toilet repairs [here](#).

Tip: How old is your toilet? Is it time for a water-saving upgrade? Keep your toilet as water-efficient as possible by replacing old and worn out parts or consider investing in a new high-efficiency toilet. Tucson Water offers rebates for high-efficiency toilets. Learn more [here](#).

Tip: To learn about quick and easy toilet repairs click [here](#).

## After completion of every room, calculator lists:

- Water facts
- Water tips
- Links to educational resources
- Links to rebate pages
- Link to FREE conservation kit orders





# Attention!

This question is asking for:

- Percentage of irrigated landscape
- Type of vegetation
- How you water different types of vegetation

### Outdoors

Do you use water outdoors to irrigate the landscape?

• Please estimate your irrigated landscape area (irrigated landscape is the part of your yard that you water with a hose, sprinkler or drip for xeriscape)

desert adapted (native and xeriscaped) plants, trees and shrubs	<input type="text" value="30"/>
<div>None</div>	<div></div>
non-living ground cover (gravel, rock, mulch, artificial grass)	<input type="text" value="50"/>
<div>None</div>	<div></div>
non-native trees and shrubs	<input type="text" value="5"/>
<div>Drip</div>	<div></div>
vegetable or flower garden	<input type="text" value="5"/>
<div>Hose</div>	<div></div>
lawn/grass/turf (any variety)	<input type="text" value="10"/>
<div>Spray</div>	<div></div>

Total:

100%

Back

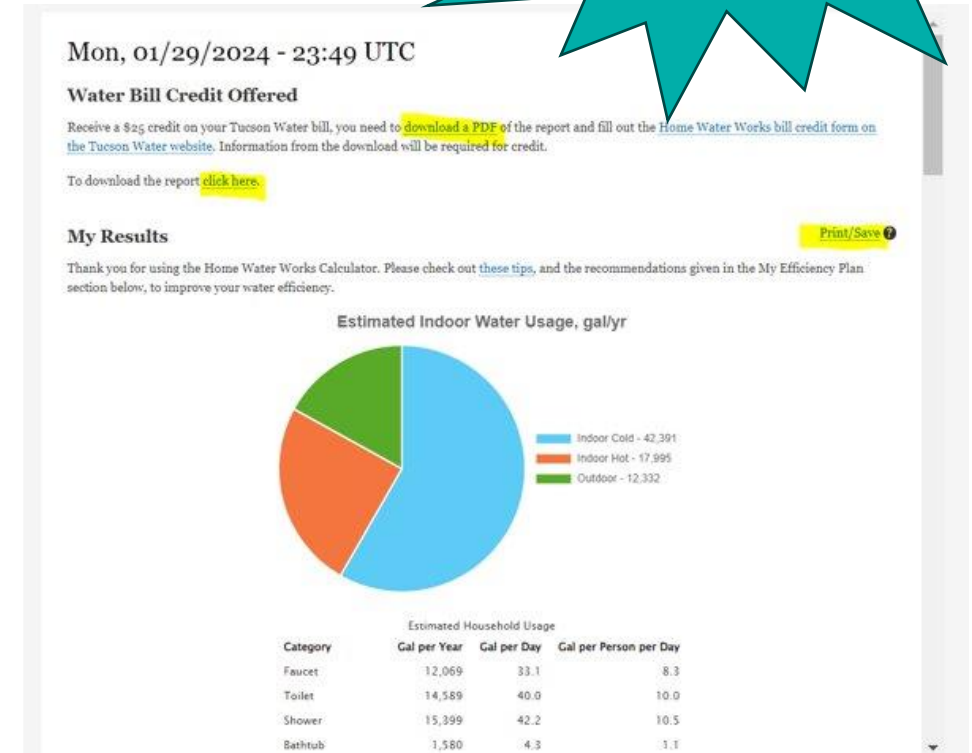
Next Question

80% completed



# Accessing your calculator report

Don't exit the browser before saving the report!



- To get your results, click on the text “[My Water Calculator Results](#)”

- You can [PRINT](#) or [SAVE](#) your report by clicking on any of the highlighted words shown above



# Accessing the bill credit form

Mon, 01/29/2024 - 23:49 UTC

## Water Bill Credit Offered

Receive a \$25 credit on your Tucson Water bill, you need to [download a PDF](#) of the report and fill out the [Home Water Works bill credit form on the Tucson Water website](#). Information from the download will be required for credit.

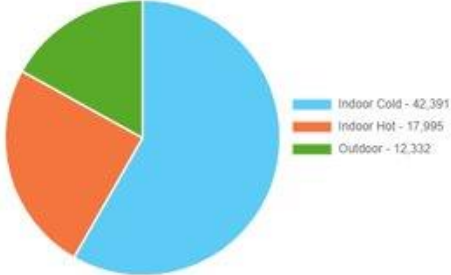
To download the report [click here](#).

### My Results

Thank you for using the Home Water Works Calculator. Please check out [these tips](#), and the recommendations given in the My Efficiency Plan section below, to improve your water efficiency.

Print/Save

#### Estimated Indoor Water Usage, gal/yr



Category	Gal per Year	Gal per Day	Gal per Person per Day
Faucet	12,069	33.1	8.3
Toilet	14,589	40.0	10.0
Shower	15,399	42.2	10.5
Bathtub	1,580	4.3	1.1

- Go back to the top and click on the text “Home Water Works bill credit form on Tucson Water website”
- This will take you to the bill credit form

## Home Water Works Calculator

Please complete this form to receive a \$25 credit on your bill. Only Tucson Water customers with active water service can apply for the bill credit.

Favor de llenar este formulario para recibir \$25 de crédito para su factura de agua. Esta oportunidad esta solamente disponible para clientes de Tucson Water que tengan contratado servicio de agua.

### Contact Information & Service Address / Información de Contacto & Dirección

\*If you have not taken a workshop, please register and attend one of our scheduled workshops. Your bill credit will not be processed until you take a workshop. Visit [tucsonaz.gov/water/diy-audit](https://tucsonaz.gov/water/diy-audit) to access the schedule.

Water Account Number / Numero de Cuenta \*

Name of Account Holder / Nombre de persona en la cuenta \*

Email / Correo electrónico \*

Service Address Line 1 / Dirección de servicio Línea 1 \*

Address Line 2 / Dirección de servicio Línea 1

City / Ciudad

State / Estado

Zip Code / Código postal

Is your mailing address different than your service address? / ¿Su dirección de servicio es distinta a su dirección de correo? \*

☐ Yes / Si ☐ No / No

### Water Calculator Questions / Preguntas de la calculadora de agua

- The bill credit form looks like this



# Filling out the bill credit form

## Water Calculator Questions / Preguntas de la calculadora de agua

Refer to the My Results section of the calculator report.

How many people live in your household? / ¿Cuántas personas viven en su hogar? \*

What was your annual estimated outdoor use in gallons? / ¿Cuál es su estimado uso de galones agua en el exterior anualmente? \*

What was your estimated Gallons Per Person Per Day? / ¿Cuál es el uso estimado de Galones por persona por día? \*

## My Efficiency Plan/ Mi Plan de Eficiencia

Please select your efficiency recommendations listed in the My Efficiency Plan section.

Por favor seleccione las recomendaciones sugeridas en la sección de Mi Plan de Eficiencia.

Please select a language and answer the following questions. / Favor de seleccionar un idioma y contestar las siguientes preguntas.

- ☒ English / Ingles  
☐ Español / Spanish

### Efficiency Recommendations:

- ☐ Faucet - Install WaterSense labeled faucet aerators. Shut off faucets when not in use.
- ☐ Toilet - Replace old toilet(s) with WaterSense labeled fixtures.
- ☐ Shower - Install a WaterSense labeled showerhead & consider reducing time spent in the shower.
- ☐ Dishwasher - Run only full loads of dishes.
- ☐ Clothes Washer - Save water & energy with an ENERGY STAR labeled clothes washer. Run only full loads of laundry.
- ☐ Leaks - Repair leaks. Toilets are often the source of the worst leaks.
- ☐ Outdoors - Save the most water outdoors by using native and drought-tolerant plants. Savings may also be achieved by tuning up the irrigation system.

1/16/24, 3:43 PM

Tue, 01/16/2024 - 22:19 UTC | AWE Water Calculator

Tue, 01/16/2024 - 22:19 UTC

## Water Bill Credit Offered

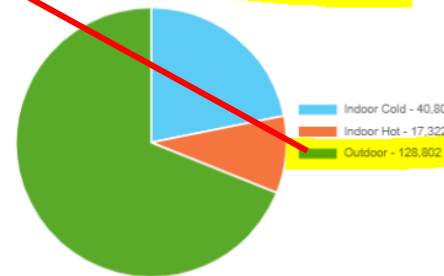
Receive a \$25 credit on your Tucson Water bill, you need to [download a PDF](#) of the report and fill out the [Home Water Works bill credit form on the Tucson Water website](#). Information from the download will be required for credit.

To download the report [click here](#).

## My Results

Thank you for using the Home Water Works Calculator. Please check out [these tips](#), and the recommendations given in the My Efficiency Plan section below, to improve your water efficiency.

### Estimated Indoor Water Usage, gal/yr



Estimated Household Usage			
Category	Gal per Year	Gal per Day	Gal per Person per Day
Faucet	12,069	33.1	8.3
Toilet	14,589	40.0	10.0
Shower	15,399	42.2	10.5
Bathtub	4,741	13.0	3.2
Dishwasher	0	0.0	0.0
Clothes washer	3,943	10.8	2.7
Evaporative cooler	0	0.0	0.0
Water softener	0	0.0	0.0

<https://www.tucsonaz.gov/Departments/Water/Conservation/DIY-Water-Audits>

1/5

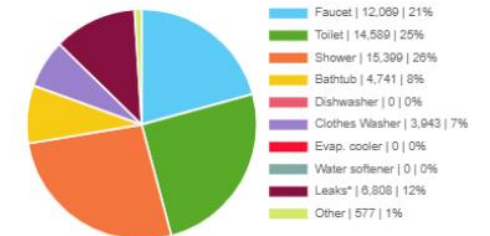
1/16/24, 3:43 PM

Tue, 01/16/2024 - 22:19 UTC | AWE Water Calculator

Category	Gal per Year	Gal per Day	Gal per Person per Day
Leaks*	6,808	18.7	4.7
Other	577	1.6	0.4
Total indoor	58,128	159.3	39.8
Indoor hot	17,322	47.5	11.9
Outdoor	128,802	352.9	88.2
Pool, spa, pond	10,104	27.7	6.9
Total	186,930	512.1	128.0

## Where I Use Water

### Estimated Indoor Water Usage, gal/yr



My household uses an estimated 128,802 gal per year outdoors. The average landscaped area of the same size in this climate would use about 140,305 gal while a water-wise landscaped area of the same size would only use about 84,183 gal.

## Energy in My Water



# Filling out the bill credit form

## Water Calculator Questions / Preguntas de la calculadora de agua

Refer to the My Results section of the calculator report.

How many people live in your household? / ¿Cuántas personas viven en su hogar? \*

What was your annual estimated outdoor use in gallons? / ¿Cuál es su estimado uso de galones agua en el exterior anualmente? \*

What was your estimated Gallons Per Person Per Day)? / ¿Cuál es el uso estimado de Galones por persona por día? \*

## My Efficiency Plan/ Mi Plan de Eficiencia

Please select your efficiency recommendations listed in the My Efficiency Plan section.

Por favor seleccione las recomendaciones sugeridas en la sección de Mi Plan de Eficiencia.

Please select a language and answer the following questions. / Favor de seleccionar un idioma y contestar las siguientes preguntas.

☒ English / Ingles

☐ Español / Spanish

### Efficiency Recommendations:

- ☐ Faucet - Install WaterSense labeled faucet aerators. Shut off faucets when not in use.
- ☐ Toilet - Replace old toilet(s) with WaterSense labeled fixtures.
- ☐ Shower - Install a WaterSense labeled showerhead & consider reducing time spent in the shower.
- ☐ Dishwasher - Run only full loads of dishes.
- ☐ Clothes Washer - Save water & energy with an ENERGY STAR labeled clothes washer. Run only full loads of laundry.
- ☐ Leaks - Repair leaks. Toilets are often the source of the worst leaks.
- ☐ Outdoors - Save the most water outdoors by using native and drought-tolerant plants. Savings may also be achieved by tuning up the irrigation system.

1/16/24, 3:43 PM

Tue, 01/16/2024 - 22:19 UTC | AWE Water Calculator

## My Efficiency Plan

The calculator has identified areas where your estimated water use exceeds that of a comparable water efficient household. Here are some recommendations for reducing water use, which should also help you save money!

Estimated Usage and Recommendations			
Volume (gal/yr)			
Category	My House	Water-Efficient House	My Efficiency Recommendation
Faucet	12,069	7,481	Install WaterSense® labeled faucet aerators. Shut off faucets when not in use.
Toilet	14,589	6,665	Replace old toilet(s) with WaterSense® labeled fixtures.
Shower	15,399	14,146	
Dishwasher	0	0	
Clothes Washer	3,943	3,943	
Leaks*	6,808	6,808	
Outdoor	128,802	84,183	Save the most water outdoors by using native and drought-tolerant plants. Savings may also be achieved by tuning up the irrigation system.

\*Most homes have leaks that homeowners are unaware of.

- Only check off the categories for which you received recommendations





You will see the following message after your  
bill credit form has been submitted!

Thank you! Your form has been submitted!

Upon approval, please expect 4 - 6 weeks for the \$25 bill credit to be reflected on your account.

Powered by Laserfiche Forms