

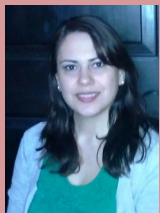
## Ward 6 Staff



Steve Kozachik



Ann Charles



Diana Amado



Molly Thrasher



Amy Stabler



Evelyn Romero



# Ward 6 - Newsletter

Tucson First

January 23, 2014

## 4<sup>th</sup> Avenue / Flood District

A few years ago I went to Thailand with my family. First let me suggest that for jogging in the morning, Bangkok is not where you want to do it. But they did have a possible solution to the Streetcar testing/4<sup>th</sup> Avenue Street Fair issue that has been boiling. Here's a link:

<http://www.youtube.com/watch?v=Led8unDvZxc>

In the alternative, we could have simply postponed 3 days of Streetcar testing, or done it on campus where the Streetcar will be running a limited route for every Street Fair once the system is up and running. I think it was unfortunate that the solution we chose was to harm our relationship with FAMA, and by holding up permits for the Flood Control District, we didn't do our relationship with the County any favors, either. There has been plenty of media about it, so I'll just leave the issue, except to say that I hope we make decisions that take a longer and wider view in the future.

## Administrative Service Charges / In-Lieu of Property Tax Fees

This item is important to me because it affects the financial health of our Water Department. It also affects the rates we charge for the commodity. And with the fiscal health of Tucson Water comes our ability to continue to buy our full allotment of CAP water and store it for the time when we'll inevitably need it. One thing is for certain. The cost to us for CAP water is only going to get more expensive.

We have extra fees that are charged to our Enterprise Departments – not on an equal basis, but to the extent they're charged at all, they go to Water, Environmental Services, and could go to HURF, Parkwise and Golf. Those last three aren't charged any of the added fees because to do so would run them into deficit.

I began looking at all of these fees a while back when members of our Citizen's Water Advisory Committee raised a series of questions. I thought they had merit and deserved some scrutiny. Staff sent a data dump of information on the Admin charges and I later met with Tucson Water staff to go over their 5 year financial plan. During that review I raised some of the questions that need to be at least talked about. Finally, we received our study session material in which was more information on both sets of fees. Altogether (the dump, 5 year finance plan and study session material) led me to feel that the questions that need to be discussed



### Important Phone Numbers

#### Tucson Police Department

911 or 791-4444  
nonemergency

#### Mayor & Council Comment Line

791-4700

#### Neighborhood Resources

791-4605

#### Park Wise

791-5071

#### Water Issues

791-3242

#### Pima County Animal Control

243-5900

#### Street Maintenance 791-3154

#### Planning and Development Services 791-5550

#### Southwest Gas

889-1888

#### Gas Emergency/ Gas Leaks

889-1888

#### West Nile Virus

#### Hotline

243-7999

#### Environment Service

791-3171

#### Graffiti Removal

792-2489

#### AZ Game & Fish

628-5376

## Continued: A Message From Steve

are somewhat of a philosophical nature and not really those that would bear much fruit if handled in a study session format. With that, I withdrew my request for study session items on them and have asked our finance people from the City Manager's office, Tucson Water and Environmental Services to all come together to talk about some of my concerns. Those include:

Are we duplicating the recovery of costs in the way we charge the fees

Is the model we use for assessing the administrative service charges accurate, and if there's a more accurate model, would it be cost efficient to implement it

Are water rate payers being charged fairly for the commodity they're purchasing, and the management of that department

Are county residents who use Tucson Water being treated fairly

Is there consensus among our professional staff on the assessment factors we're using to charge the departments (my concern here is that we're asking Water and E.S. to operate like a business, and that being the case we should not be employing a 'top-down' management style in how we charge them fees. They need to buy-into the models we use.)

Are we using the most accurate method for computing the in-lieu fees that we could. Is charging it to only one Enterprise Department justifiable. Should it be offset by a reduction in your primary property tax rate.

Are we double charging water rate payers for the pay increase we just adopted; once in the water rates, and again in the Admin charge Tucson Water is paying

These are just a few of the questions I'm going to ask our staff to toss around. I've asked the meeting to be one among equals; that is, everybody in the room needs to feel the liberty to share his/her opinions on these issues without any fear that there will be any retribution later from up the food chain. Without that assurance, the meeting's a waste of time.

If you add up all of the extra taxes/fees our Water rate payers are being charged, it comes to over \$17M annually. That's \$1.6M for the in-lieu, about \$9M for the Admin. Service Charge, about \$4M for a utility tax and about \$3M for sales taxes. None of that is the commodity (water) that we're supplying. I just want to make sure these add-ons are equitable so when we come back and ask for a rate increase later in the year, we can defend what we're asking for.

More on this after I meet with staff and hear their discussion. The basic premise though is this; treat enterprises like businesses and include them in the conversation as to rates – they're just a pass through to rate payers.

### 1300 E. 10<sup>th</sup> – 1897 Home

Ernesto Portillo of the Az Star has covered this topic well in his Sunday pieces (January 12th and 19th.) Following his latest piece I decided to pay the property a visit and see how much work it really might need to be preserved. Guess what. It was built 115 years ago – it needs some work. But look what is being proposed to demolish:



**Important Phone Numbers**

Senator John McCain (R)  
520-670-6334

Senator Jeff Flake (R)  
520-575-8633

Congressman Ron Barber (D)  
(2<sup>nd</sup> District)  
520-881-3588

Congressman Raul Grijalva (D)  
(3<sup>rd</sup> District)  
520-622-6788

Governor Janice Brewer (R)  
Governor of Arizona  
602-542-4331

Toll free:  
1-800-253-0883

State Legislators

Toll Free Telephone:  
1-800-352-8404

Internet:  
[www.azleg.gov](http://www.azleg.gov)

Mayor Jonathan Rothschild  
791-4201

City Infoguide  
<http://cms3.tucsonaz.gov/infoguide>



It presents well to the 10th Street side. The history of this property is tied in a very significant way to the UA, to the early years of our City, and to families who were active in forming us as a community. It's now scheduled to be yet more student housing. There's a creative way to preserve what you see in the photo and build density on the rear half of the parcel (lot split) if the builder and his investors will hit the pause button. At this point, that's a financial decision they need to agree on. Many of us who have been involved with

discussions of this house are still hopeful. Right now there's a hazmat assessment being done, so that will buy some time. Here's the checklist that licensed contractors are required to submit before demo'ing a structure:

**PDEQ DEMOLITION/RENOVATION ASBESTOS NESHAP EXEMPTION**

JOB SITE ADDRESS: \_\_\_\_\_

The purpose of this form is to determine EXEMPTION from the requirements of the Asbestos National Emission Standards for Hazardous Air Pollutants (Asbestos NESHAP). Part A is for a RESIDENTIAL home exemption. Part B is for a commercial exemption.

**PART A: If your project involves renovation/demolition of a residential home only, please answer the following questions to determine exemption:**

Does this renovation/demolition project involve more than ONE residential building at the same site with the same owner/operator?	Y ~	N ~
Is this building currently being used, or has it EVER been used, as a commercial, government, daycare, office, church, charitable or other non-profit place of business?	Y ~	N ~
Has this one residential building been divided into five or more dwelling units or leased/rental units?	Y ~	N ~
Is this building to be demolished as part of a highway or road-widening project?	Y ~	N ~
Is this building part of a building cooperative, apartment or condo building?	Y ~	N ~
Is this building used for military housing?	Y ~	N ~
Have other residences or non-residential buildings at this site been scheduled to be demolished now, or in the future, as part of a larger project?	Y ~	N ~
Is more than ONE building to be lifted from its foundation and relocated?	Y ~	N ~
Will this building be intentionally burned for the purpose of demolition or fire department training?	Y ~	N ~

**PART B: If your project involves RENOVATION or REMODELING of a commercial building, answer the following questions to determine exemption from the NESHAP notification requirement.**

Does the thorough asbestos survey of the area to be renovated identify 180 square feet, 280 linear feet of thermal system insulation (TSI), or 35 cubic feet or more of friable asbestos containing material? <b>Note: During renovation activities, some asbestos building materials may become friable during removal.</b>	Y ~	N ~
Does the renovation include demolition of load supporting structural members? <b>Note: If the commercial structure is to be DEMOLISHED, the demolition requires a PDEQ NESHAP notification, a demolition activity permit and a \$420 fee, even if all the asbestos has been removed or the building has no asbestos.</b>	Y ~	N ~

**ANY "YES" ANSWERS TO THE ABOVE QUESTIONS in A or B above MAY REQUIRE:**

- An asbestos survey of the building(s) or facilities involved,
  - A NESHAP Notification, submitted TEN working days prior to Renovation/Demolition,
  - A Pima County Asbestos Removal/Demolition Activity Permit Application with \$420.00 fee.
- If a permit is needed for your project or you have any questions, please contact PDEQ at 520-740-3340.

**NOTE:** This NESHAP exemption, based on information you have certified as correct, applies to the above facility. The owner, contractor, or subcontractors are not relieved from compliance with city, county, state and federal laws, statutes and codes or from obtaining permits for other activities. Enforcement action may be taken if the project is found to be subject to the Asbestos NESHAP, which may include monetary penalties. In the event the activity listed above should become subject to the Asbestos NESHAP during the course of the project, the owner or operator shall stop work and follow 40 CFR 61.61.145(b) procedures. 40 CFR 61.19 forbids owners and operators from attempting to circumvent any NESHAP by carrying out an operation in a piecemeal fashion to avoid coverage by a standard that applies only to larger than a specified size.

Facilities subject to the regulation must be inspected for asbestos prior to renovation/demolition. Identified regulated asbestos-containing materials (RACM) **MUST BE REMOVED** if RACM is above threshold amounts prior to disturbance.

I CERTIFY THAT THE ABOVE INFORMATION IS CORRECT			
PRINT NAME: OWNER/OPERATOR _____	TITLE _____	SIGNATURE _____	DATE _____
TELEPHONE # _____		FAX # _____	

Clearly this project qualifies as requiring at least a DEQ check to make sure abatement in some form is or is not necessary. The process may buy time to allow for a positive outcome to emerge.

**Pima Association of Governments**

We get updates on the many issues the PAG has on their agenda. The mayor is our representative on that committee and we talk about their agenda items in order to give him direction as to the will of the council. This week there were a few pretty important items.

**RTA Funding** – You may have seen in the news recently that the anticipated sales tax revenues being collected by the RTA are significantly under what they had projected when the ballot measure was adopted back in 2006. To address the shortfall, the PAG council is considering sweeping about \$227M from regional Transportation Improvement Plan (TIP) funds that would otherwise go to regional projects in the 2020 – 2026 time frame. Alternatives include scoping down the RTA roadway projects (something I’ve been arguing on the Broadway project for over a year,) selling bonds or eliminating some of the elements that were voted on and only funding the road work. None of them are easy calls, and we’ll keep an eye on what direction the PAG goes on this. My preference is to do a little from each option – rescope work, chip off some of the TIP funding, sell some bonds and keep the non-roadway elements of the RTA Plan as possible funding sources if revenues continue to fail to cover the costs.

**Extending the “Border Zone”** – Several years ago Congress allowed the designation of a “Border Zone” of 75 miles in size (measured from the Mexican border) that allows Mexican visitors to travel here for up to 30 days on a frequent basis. That’s good for our local economy from a tourism standpoint. The PAG is considering joining with the many other regional governmental groupings from around the State in extending that designation State-wide.

In 2010, we unanimously voted as a M&C to oppose SB1070. Both Flagstaff and San Luis joined us in filing briefs in opposition. But the rest of the State stands in support of the law. Last December I wrote an op/ed for the Arizona Daily Star in which I called for a full repeal of the measure. I know my colleagues on the Council agree that that would be the preferred outcome. Now we have an opportunity to once again send a message State wide to that effect.

Extending the “Border Zone” designation to the rest of the State is meant as a way to en-

courage tourism dollars from Mexico to skip past us and up to Maricopa County, and beyond. They're ignoring the fact that it was Tucson who took a stand against the Legislature. On Wednesday we unanimously affirmed our opposition to the extension unless and until the State Legislature repeals that law. We see no reason to allow the State to benefit from the goodwill we generated through our vote to oppose until they join us and get rid of SB1070.

**I-11 Corridor Alignment** – We've shared our thoughts before on the proposed alignment of the I-11 corridor, but it came up again with an option that's unacceptable. To refresh you, this is the idea of connecting a freeway all the way from the Mexican border up to Las Vegas. The alignment going north of Phoenix isn't the issue. It's how they take the roadway from the border to Maricopa County. One idea simply builds capacity on the existing I-19/I-10 stretch. That's ok. The one that I would object to runs west of the Tucson Mountains beginning in Sahuarita, and reconnecting with I-10 north of Marana. That effectively by-passes Tucson. And it imposes a significant negative impact on some pristine area out by Tucson Mountain Park. It's a big 'no sale' and as with the 1070 vote, we sent a unanimous message to PAG that it doesn't need to keep considering it.

#### **Sun Tran Fares/Routes**

Since the middle of last year we've had three processes in play with respect to funding for our transit operation. One was having commissioned a Comprehensive Operational Analysis. That'll address how the various routes are recovering costs, how they are impacted by Title VI considerations (disparate impact on low income/minorities) and make suggestions as to how to build efficiencies into what we're now doing. We're still waiting for those results.

In addition, staff worked through the Arizona Transit Association and had a best practices review with other peer transit agencies done. There was a group of eight transit professionals who came in and evaluated us with a focus on ridership, cost controls and strategies for increasing revenues. While the report made a few suggestions related to considering alternate contracting methods and some minor cost saving approaches we could consider with regard to Van Tran, they really deferred to the outcomes of the upcoming COA for much of the financial impact ideas. Generally, they gave good passing marks to our system in areas related to how the system is operating.

That left the fare policy discussion. The information we received in our study session material came from a combination of the Transit Task Force, and City Staff. Our formal discussion of it was put off until February 4<sup>th</sup>.

Our transit fare revenue for fy'14 is estimated to be around a 22.8% farebox recovery ratio. Our stated goal is 25%. Staff compared our recovery ratios to a dozen peer systems and found ours to be near the lowest in average fare per boarding and below average in fare recovery. We need to generate more discretionary riders.

The proposed fare changes we'll be talking about will apply to the whole system; that is Sun Tran, Sun Tran Express, Sun Van and Sun Link (the streetcar.) It's organized around a base fare, from which all of the others are framed based on multipliers that are meant to reflect ridership frequencies (for example, a 'day pass' was assumed to be the base fare x 4; as-

sumes the average rider will board a bus 4 times in a single day.) The proposal made by staff is intended to increase system revenues by \$4.2M over a six year period. In addition it proposes to bring the low income fare from 33% of the base fare up to 50% of that fare over that same six year time frame. Here's generally what will be on the table:

FAREBOX REVENUE FOR FY'14 \$15,624,847  
 CHANGE PROPOSED FOR FY'15 \$2,405,647

- Increase Base Fare to \$1.75
- Increase day pass multiplier to 4 (avg rider is on 4 busses p/day – currently the multiplier is 2.33.)
- Increase period pass multiplier to 36 per month (avg rider rides 36 times p/month – currently the multiplier is 28.)
- Day pass, semester pass discount 15% (proposing a 15% discount to encourage day passes, and UA/PCC semester passes)
- Annual pass discount 20% (proposing 20% discount to encourage people to buy an annual pass)
- 4% increase in all fares in 2017, 2019, 2021, 2023, 2025
- 2.2% annual growth rate
- Economy Fare phased from 33% to 50% of Base Fare over six years

Here are the numbers:

	Current	Proposed for FY'15
BASE FARE	\$1.50	\$1.75
ECONOMY FARE	\$0.50	\$0.65
EXPRESS FARE	\$2.00	\$2.65
DAY PASS	\$3.50	\$6.00
30 DAY PASS	\$42.00	\$63.00
ECONOMY 30 DAY PASS	\$15.00	\$23.50
EXPRESS 30 DAY PASS	\$56.00	\$96.00
UA/PCC BASE FARE SEMESTER PASS	\$173.00	\$268.00
UA/PCC SEMESTER EXPRESS PASS	\$230.00	\$405.00
UA ANNUAL BASE FARE PASS	\$413.00	\$605.00
UA ANNUAL EXPRESS PASS	\$550.00	\$915.00

The process going forward is to have staff conduct the fare equity and route efficiency analysis in March, for us to hold a public hearing on any fare changes we're considering,

and then the results would be adopted by June of this year. As a part of the upcoming budget process we'll also be presented a suggested maximum budget allocation from the General Fund.

Please feel free to share your thoughts at any time up to and including the night of the public hearing (date still TBD.)

### **Domestic Violence and Gun Control**

A couple of months ago I hosted a forum at the Ward 6 office with Mom's Demand Action on the issue of DV and guns. For a domestic violence victim, whether her partner owns a gun can be the difference between life and death.

The data are compelling: One in four women in the U.S. will experience Domestic Violence during her lifetime. Those women are 5X more likely to be murdered when their partner owns a firearm. There's gun violence, there's Domestic Violence, and there's mixing the two – the coupling of which often leaves our friends, daughters and sisters dead.

So what's the point here? Two.

First, I'm working with Mom's and Tucson Coalition Against Gun Violence on a presentation we'll make to the Tucson Women's Commission in March on exactly this topic. DV and guns is certainly a women's issue, and we're hopeful that the Commission will take an advocacy role in strengthening the laws.

Second and to that point, a recent Supreme Court case may have a huge impact on whether the laws preventing DV abusers can own a gun. The case is U.S. v Castleman. Here's the text of what the Court is considering:

#### **QUESTION PRESENTED**

**Section 922(g)(9) of Title 18, United States Code, makes it a crime for any person convicted of a "mis-demeanor crime of domestic violence" to possess a firearm. The phrase "misdemeanor crime of domestic violence" is defined to include any federal, state, or tribal misdemeanor offense, committed by a person with a specified domestic relationship to the victim, that "has, as an element, the use or attempted use of physical force, or the threatened use of a deadly weapon." 18 U.S.C. 921(a)(33)(A).**

**The question pre-sented is: Whether respondent's Tennessee conviction for misdemeanor domestic assault by intentionally or knowingly causing bodily injury to the mother of his child qualifies as a conviction for a "misdemeanor crime of domestic violence."**

That is, *when* the gun ban should apply to a DV perp. The Federal law says that the ban applies to anybody who has been convicted of a misdemeanor crime of DV (my opinion – misdemeanor is too light, but that's another issue.) That includes the "use or attempted use of physical force, or the threatened use of a deadly weapon." So the Court is considering what constitutes "physical force."

In 2001, James Castleman pled guilty in Tennessee State Court to "intentionally or knowingly causing bodily injury" to the mother of his child. That was misdemeanor domestic as-

sault. Later he was arrested for selling guns on the black market. He argued that he could not be charged with violating the gun ban for DV because he had not specifically pled guilty to the *use of physical force*. The lower court agreed.

If the Supreme Court upholds that, it will undercut the understood intent of the DV restrictions. That is, DV is known to follow a pattern of behavior. It moves from pushing, grabbing, spitting, or shoving to escalating into more aggressive violence. Access to guns increases the likelihood of fatality. Hair splitting by the Court can undo the law in how it was intended to operate.

Mom's, TCAGV and I are looking forward to sharing with the Tucson Women's Commission in March. Ahead of that, we're also watching for an outcome from this trial. You can see what's possibly at stake.

### **Regional Municipalities Veterans Treatment Court**



I visited Judge Pollard's courtroom last week. I was innocent. But the other reason / the real reason / was to help to honor the 24 men and women who were graduating from Veteran's court.

Since 2009 we have operated a program through which veterans who have run afoul of the law are given the opportunity to enter a diversion program and work their way back to being whole in the eyes of the law. Generally these are vets who have come home from abroad suffering from PTS or some other injury/illness, the net result of which was to leave them vulnerable to running off the tracks and getting in trouble. It could have been drug related issues, Domestic Violence, or any of a number of other issues that they had trouble dealing with, and the result was standing in front of a judge.

Since its inception, Veteran's court has come into contact with nearly 400 vets, 166 of whom have graduated and had their records cleared. These are men and women who have served in Vietnam, Somalia, Grenada, Desert Storm, Afghanistan, Iraq – all of the theaters of conflict you're familiar with. And the diversion program is their avenue back to full status and turning their lives back around.

It was touching to see these men and women come forward and receive their awards. They have served us, suffered as a result and now are headed in a good direction. Our thanks go out to Judge Pollard, Judge Simmons, Judge Pyle, our City Prosecutors office, and the UA law school for understanding the value of giving these folks a second chance, but one they are responsible for earning.

### **Job Fair**

And on Thursday, March 20<sup>th</sup> the graduates, plus a host of other veterans who are looking to get back into the workforce will be participating in a Job Fair. The fair will take place on the Pima College West Campus from 10am until 2pm. Businesses of all sorts are already signing up to set up shop at the Fair and talk to the men and women who will be out there looking to get work. So far we've heard from car dealers, construction firms, service industry representatives and others. If you own or operate a business and would like to



take a few hours out on the 20<sup>th</sup> to see what this group of veterans has to offer, please contact Magistrate Judge Pyle @ 205.4650, or by email at [Charles\\_pyle@azd.uscourts.gov](mailto:Charles_pyle@azd.uscourts.gov).

As was the case with the ladies we saw turn a corner through Project RAISE, it was great to see this new first step for the graduates from Judge Pollard's program.

### **Tucson Homeless Connect**

And similarly, on Friday, January 24<sup>th</sup> at Trinity Presbyterian Church (400 E. University) a one day event will be held in an effort to connect homeless in the community with services of various sorts. The event is being sponsored by a bunch of groups (TEP, Pima Animal Care Center, Southern Arizona Procurement Fair, Great Clips, the 355 Contracting Squadron at DM, Nicolosi and Fitch, and more) along with the City's Department of Housing and Community Development.

There will be food offered, and inside the event a one-stop model will offer employment assistance, veteran's services, pet health care, clothing, haircuts and much more. The goal – help to get services to needy folks, and help to get them off the street.

The event will run from 8:30am until 1pm. The nearest bus access is provided by the 1, 3 and 6 routes. This is a no weapons, no alcohol, no drugs event. If you know somebody who may benefit, please encourage them to participate.

### **Center for Health and Justice at TASC (Treatment Alternatives to Street Crime)**

And to tie it all together – a survey was conducted by the CHJ to shed some light on how mental illness and substance abuse is linked to our prison and jail populations. This was a National survey that looked at the many diversion programs being tried (such as Judge Pollard's Veteran's Court – and Project ROSE / the diversion program on which we modeled our local diversion for prostitutes (Project RAISE).) The study was implemented in response to the economic realities of seeing a justice system that's bursting at the seams. Nationally there's an increasing understanding that diverting people away from conviction, and towards programs that can touch the underlying issues in their lives makes sense.

The data show this:

	State Prisons	Local Jails
Serious Mental Health Problems	56% of inmates	64% of inmates
Mental Illness	16% of inmates	17% of inmates
Substance Abuse Issues	53% of inmates	68% of inmates

The work being done through the diversion programs, and the potential for changing lives at Tucson Homeless Connect are both fundamentally important to our community.



In the past few newsletters I've shared how important to attracting the film industry the County and Old Tucson people have been. They're changing their mode of operation a little, and that will increase the attraction that the site already is.

There is being formed a non-profit Arizona Sonora Western Heritage Foundation. It'll work in cooperation with Old Tucson and expand what's offered out there to include a multi-cultural Western Heritage Center. The displays will largely be interactive and will encourage a deeper appreciation for the complexities of the diverse history of this region. The UA will also be a part of putting all of this together.

They'll still have the themed attractions, but this Foundation will have the capacity to expand to include more entertainment, food and crafts, and exhibits showing the history of ranching, farming, mining and transportation.

Old Tucson's cultural roots run all the way back to its origin as a film location. In 1939, Columbia Pictures' set builders put together the first movie out there; "Arizona." Fitting. Since then there have been over 300 feature films and TV westerns shot on the site. More to come if our incentive package works, but ahead of that, the work of the new Foundation will expand what the Old Tucson experience is all about.

Congratulations to Pete Manglesdorf and the County folks for putting this together.

#### **Poverty; The Working Poor**

Finally, there's a forum coming on February 12<sup>th</sup> down at the Fox that'll be the first in a series sponsored by Az Public Media and the Community Foundation of Southern Arizona. The goal is for these to be interactive dialogues addressing a variety of issues we face as a region. The first is entitled "Poverty – The Working Poor."

The moderator is Neal Conan (former host of Talk of the Nation on NPR radio.) So far the panelists include:

- **Patti Caldwell**, executive director, Our Family Services
- **Ian Galloway**, senior research associate, Federal Reserve Bank of San Francisco
- **Peggy Hutchison**, chief executive officer, Primavera Foundation
- **Lane Kenworthy**, professor of sociology and political science, University of Arizona
- **Michael McDonald**, executive director, Community Food Bank of Southern Arizona
- **John Pedicone**, former superintendent, Tucson Unified School District

Tucson's poverty rates were among the Nation's highest last year, with one in five living below the poverty line. Throughout Pima County, the poverty rate among children was 29 percent. Many elderly, veterans, and single mothers in Pima County are struggling every day to survive; even while working one, two, sometimes three jobs. The panel will explore ways we can come together as a community and break the trend.

The event will run from 6:30 until 8pm. Since seating is limited, you should RSVP to Jill Becker at Arizona Public Media ([eventsRSVP@azpm.org](mailto:eventsRSVP@azpm.org)) or call her at 621.3277.

Sincerely,



Steve Kozachik  
Council Member, Ward 6  
[ward6@tucsonaz.gov](mailto:ward6@tucsonaz.gov)

## Events Calendar

What's happening this week in the Downtown, 4<sup>th</sup> Avenue, and Main Gate areas . . .

**Fox Theatre**, 17 W. Congress St.

Sunday, January 26, 2014, 3:00 pm

**Cirque D'Or** is perfect for the entire family. This amazing show brings you beautiful costumes, dynamic sound and lighting, and the world's greatest talent assembled on one stage.

[www.FoxTucsonTheatre.org](http://www.FoxTucsonTheatre.org)

**Hotel Congress** 311 E. Congress St.

**DILLINGER DAYS**

January 24, 2014 - January 25, 2014

8:00 AM to 5:00 PM

The Saturday event is FREE & FAMILY-FRIENDLY, as always, with re-enactments of Dillinger's capture, food, live music, and a vintage car show. To heighten the historic experience, this year's annual on-site fire re-enactment will be supplemented with the first-ever re-enactment in the original Pima County courtroom from Dillinger's 1934 trial!

See schedule here: <http://hotelcongress.com/events/january/>

**Loft Cinema**, 3233 E. Speedway

Saturday, January 25 at Noon **Growing Cities: A Film about Urban Farming in America**

Co-presented by Edible Baja Arizona

[www.loftcinema.com/](http://www.loftcinema.com/)

**Rialto Theatre**, 318 E. Congress St.

Wednesday, January 29th, 2014, 8pm showtime

**Parmalee** - Country rock sounds with roots in bluegrass, traditional country, southern rock and blues!

[http://www.rialtotheatre.com/event\\_pop.php?id=1445](http://www.rialtotheatre.com/event_pop.php?id=1445)

## Ongoing . . . .

**Tucson Museum of Art**, 140 N. Main Ave.  
[www.TucsonMuseumofArt.org](http://www.TucsonMuseumofArt.org)

**Jewish History Museum**, 564 S. Stone Ave.  
The Jewish History Museum presents "Cowboys, Merchants, Miners, & Booze," an exhibit that celebrates the lives of Tucson's Jewish pioneers.  
[www.jewishhistorymuseum.org](http://www.jewishhistorymuseum.org)

**Children's Museum Tucson**, 200 S. 6<sup>th</sup> Ave.  
Tuesday - Friday: 9:00am - 5:00pm; Saturdays & Sundays: 10:00am - 5:00pm  
[www.childrensmuseumtucson.org](http://www.childrensmuseumtucson.org)

**Arizona State Museum**, 1013 E. University Blvd  
November 9, 2013, through July 2015 **Curtis Reframed: The Arizona Portfolios**  
[www.statemuseum.arizona.edu](http://www.statemuseum.arizona.edu)

**UA Mineral Museum**, 1601 E University Blvd  
Ongoing "100 Years of Arizona's Best: The Minerals that Made the State"

**Southern Arizona Transportation Museum**, 414 N Toole Ave.  
Explore regional transportation history, and see a freight trains passing by, or ring the locomotive bell at the Southern Arizona Transportation Museum every Saturday, year round.  
Tuesday – Thursday, Sunday: 1100am - 3:00pm; Friday & Saturdays: 10:00am - 4:00pm  
<http://www.tucsonhistoricdepot.org/>

**Sacred Machine Museum & Curiosity Shop** 245 E Congress St  
<http://sacredmachine.com/>

**Meet Me at Maynards**  
A social walk/run through the Downtown area  
Every Monday, rain or shine, holidays too!  
Maynards Market and Kitchen, 400 N. Toole Avenue, the historic train depot  
Check-in begins at 5:15pm.  
[www.MeetMeatMaynards.com](http://www.MeetMeatMaynards.com)

**For other events in the Downtown/4<sup>th</sup> Avenue/Main Gate area, visit these sites:**  
[www.MainGateSquare.com](http://www.MainGateSquare.com)  
[www.FourthAvenue.org](http://www.FourthAvenue.org)  
[www.DowntownTucson.org](http://www.DowntownTucson.org)